

325 ANTIQUES/ COLLECTIBLES

1928 Chevy coupe, parts car, disassembled, can be restored, made offer. For info 610-593-6555.
Several thousand 38mm returnable polycarbonate milk bottles, 30 cents/ea. 717-741-3485

1994 Buick Skylark, 2 dr, good shape, \$1800 obo. (717)764-8215
1953 Jeep CJ3A, 4x4, w/PTO & hubs, \$5,000 obo. 610-593-6555
'99 Chevy Monte Carlo LS, 3100 V6, auto, PS, PB, PW, PDL, cruise, tilt, air, Am/Fm/Cass/CD, 29,000 miles, black, \$7,900. 717-733-2873
'93 Ford Tempo GL, 4dr, V6 auto, PS, PB, cruise, tilt, air, new tires, 80,000 miles, black, \$1,800. 717-733-2873
'97 Saturn SL1, 4 dr, 4 cyl, 5 spd, PS, PB, PW, PDL, cruise, tilt, air, Am-Fm cass., new radials, dark green, 93,000 miles, excellent condition, \$2,975. 717-733-2873
34 Ford Escort LX, 4 cyl., auto, AC, 8,000 miles. White, tan int. \$2395. (215)234-4979

340 CARS FOR SALE

1960 TR3 needs restored. Many extra parts. Best offer. (717)229-2185

'98 Chevy Cheyenne 2500, extended cab, 2wd, 350 auto, PS, PB, cruise, tilt, air, 373 ratio, towing pkg, 91,000 one owner miles, ex cond, \$9,950. 717-733-2873
'98 Dodge 3500, 15 pass, 360 auto, PS, PB, PW, PDL, cruise, tilt, dual air, am-fm cass., 35,000 one-owner miles, dark green, \$11,995. 717-733-2873
'00 Chevy Cheyenne 2500, 2WD, 350, 5 spd, PS, PB, -cruise, tilt, air, 8,600 GVW, 55,000 miles, pewter, ex. condition, \$10,900. 717-733-2873
'99 Dodge SLT 1500 4x4, 360 auto, PS, PB, PW, PDL, cruise, tilt, air, 72,000 mi., new radials, \$11,500. 717-733-2873
2) '71 Int dumps, very easy repairable or great for parts, dump bed & bodies in very good condition. 717-583-0808
2002 Utility trailer-53', 10' spread, step deck, alum. whls, leds bulkhead. \$17,200. (717)443-7814
99 F350 crewcab dual powerstroke, 87K, loaded, tow pkg, goose-neck hitch. \$22,000. (410)676-2495
Horse trailer '00 CornPro, 18' stock, 3H slant, mats, very good condition, \$4,200. 717-534-5611
Beautiful 2001 Ford F-150 XLT Super Cab 4x4, only 13,000 mls. Still under warranty. Just \$22,500. (301)473-4046
'00 Ford XLT E350 super duty, 15 pass, 5.4 auto, PS, PB, PW, PDL, cruise, tilt, dual air, Am-Fm cass., 47,000 miles, dark green. \$12,900. 717-733-2873
1977 IH Single Axle Dump w/ plow & 2 salt spreaders DT 466 5+2 \$2000 (717) 991-2515
1968 Ford 2000 gal Water Truck \$1800 (717) 991-2515
Ford '78, F350, Holmes rollback, new paint, new motor, new exhaust, tires 90%, truck is in excellent cond, \$7,250. Bucks Co, call 215-778-2681.

1977 Trailmobile Tank Trailer 8900 gal. 4 compartments, ex. shape top-bottom, will sell or trade for day cab tractor of equal value. Have \$12,000 invested. (800)592-9577
Wanted: Alum 18' GN stock trailer for reasonable price. (570)566-0402
'88 Bronco, 10,000 on new motor, new transfer, gas tank, manual, hubs, elect. windows. Snowday down press. Good all around. New inspect. Excellent snow plow \$7000 obo. (717)569-4264
'79 Ford Bronco w/ Snowday 8', good motor, trans, rubber, interior, some ext. rust. Quick sale \$2250.
'85 Iveco Z110 diesel 12' flatbed. Good condition. \$3000 OBO. (610)370-2156
Good used 16' bumper HITCH Corn Pro Stock trailer with center divider. (570)836-1907
'69 IH dump truck restored \$3500. '70 IH dump truck \$2500. 12 ton trailer \$2500.
2002 Dodge dually pick-up bed, good cond, white color, Call 814-667-3666
Levenco 12 ft metal truck bed w/ elect. hydro. lift & side boards... \$1,200 (717)285-4162
White 2-70, very good condition, recent overhaul. Eves, 814-427-2938
For Sale: 1993 Dodge Ram B-250 Van. Very Clean. 76,000 miles. Good Running. Good Shape. \$3,600 CALL (717)235-4480
'78 Ford F600 dump truck, adw, w/ 10' snow plow, \$2200 will separate (570)752-7131
1979 F150, 4x4, auto, 429 V8, alum wheels, trailer hitch, good cond, \$2,200 obo. 717-921-2677

'86 Ford 250, 4x4 w/cap. Meyers power angle snow plow, (570)672-9890
Wanted: pick up bed for '94 Ford F350 dually, must be in ex cond, MD (301)475-2502
1979 R-Model Mack truck/tractor, 300+ Mack motor, 10 spd, Jake, tires & brakes @75%, runs good. \$4000. (814)349-8054
1977 Mack DM triaxle log truck, good tires, new inspection, Barko loader, Call 570-568-3451
1994 CL MACK Triaxle Dump, 350 8LL Trans, incl 16' salt spreader w/own gas eng & cab controls; also, 11' 2-way hydraulic angle plow, will sell spreader separately (610)562-2594 after 5pm for more info
1975 Ford F350 360 V8 4spd, dual wheels, 9ft stake bed, cab rusty, Farm Truck or Parts. \$800 OBO (717) 226-4172 before 9 PM Cumberland Co.
1987 International, single axle, 33,000 GVWR 9.01 dsl, 20' box w/pwr lift gate, 135k mi, 168" C.A. A/C, \$5,000 neg. 1-800-593-4101
'97 GMC SL 1500 Suburban, 2wd, 350 auto, PS, PB, cruise, tilt, air, Am-Fm cass, towing package, 78,000 miles, ex. cond., \$8,950. 717-733-2873
'98 Chevy Cheyenne 1500 WT, 4x4, 4.3 Vortec, auto, PS, PB, air, Am-Fm cass, 70,000 one owner mi., burgundy, ex. cond., \$9,950. 717-733-2873
'91 Chevy Silverado Suburban 2500, 2wd, 350 auto, PS, PB, PW, PDL, cruise, tilt, air, 8 pass, 410 ratio, towing package, 82,000 mi., ex. cond., \$5,900. 717-733-2873

'95 Chevy Silverado 1500, 4x4 Suburban, 350 auto, PS, PB, PW, PDL, cruise, tilt, dual air, barn doors, 82,000 miles, excellent condition, \$11,995. 717-733-2873
'00 GMC SL 2500, HD, 3/4 ton, 2WD pickup, 350 auto, PS, PB, cruise, tilt, air, AM/FM cass, 8600 GVW, 159,000 one-owner highway miles, \$6,700. 717-733-2873
'97 Chevy Cheyenne 2500, ext. cab, 2wd, 350 auto, PS, PB, cruise, tilt, air, Am-Fm cass, towing package, 8,600 GVW, 63,000 one owner miles, \$9,950. 717-733-2873

'98 Chevy Cheyenne 2500, 2wd, 350 auto, PS, PB, Am-Fm, 8,600 GVW, 63,000 miles, \$7,950. 717-733-2873
'92 GMC Sonoma ST S15 ext. cab, 2wd, 4.3 V6 auto, PS, PB, cruise, tilt, air, 31,000 original miles, excellent condition, \$4,975. 717-733-2873



1989 IH single axle tractor, low mileage on chassis, w/remanufactured eng. 1994 32ft drop deck trailer. 570-494-0441



1980-Fruehauf Open Top Trailer 45'x13'6" New Roll Tarp & Doors. Good Tires & Brakes. Call 540-350-2903

WANTED CASH WAITING
Check your barns and garages. Looking for antiques, classics & muscle cars and parts. Nothing newer than 74. Also automobile memorabilia and gas station related items. Foreign or domestic Chrysler products 70-74 NO 4-DOORS, NO DEALERS
Contact Steve **215-237-2898**
coololdcars@comcast.net

350 TRUCKS / TRAILERS

Horse trailer, ramp load, good condition, \$800. 717-532-6362

Huber maintainer grader, runs good, \$2000. 1989 350 XLT Ford utility bed truck, dual wheels, 460 eng. low miles, blue, good cond, \$5500. (717)225-1888

1999 F550 Crew Cab, Dual, Flatbed, new 6spd transmission, 4WD, 7.3 diesel, lots of new parts. (717)994-0493
1975 44' Wilson Cattle Trailer w/belly, \$2,500, No Sunday Calls 240-675-3150 days or 717-328-0121 eves.

Buy a pre-owned car or truck for auction net + 7% (Manheim online), Eagles Nest Auto Buyers' Agent, Ducannon, Pa. Toll-Free 877-801-2230
IH 1810, ex running, 345 gas, less than 10,000 mi since new, air brakes, 2 spd rear, PS, will separate. (410)892-5048, 410-916-2240
FOR SALE: 1995 7x14 Utility Trailer 7000 GVWR, \$600 (717) 991-2515
FOR SALE: 1974 Ford Tandem Axle Dump, 13spd, 1160 Cat \$2500 (717) 991-2515
FOR SALE: Rogers Fixed Neck Lowboy \$2000 (717) 991-2515

'99 Dodge 2500, V10, 4x4, auto, AC, loaded, sun-roof, tow pkg, 40k mi, incl matching Leer Cap, runs ex, priced neg \$13,000 (570)387-0247

'98 IH lo-Boy 39k, 13' Eby body, dividers inside gates. (607)849-4860
1982 Ford 350 dully, 351, 4 spd, \$2000. #70 Case loader, \$500. 717-859-3027
Van Storage Trailers, 45' & 48'. Call 717-397-7695

1950 Chevy & Mack; 1960 IH; 1971 white van, all restorable, Farmall H parts. (215)345-0121

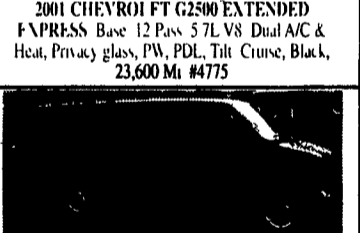
1978 Chevy Step Van, V8, AT, PB, new paint, good cond. \$3,500 (717)382-4878 ext 101
1997 Ford F-350. XLT, diesel, 4 door, auto, 195,000 mi, new transmission, ex cond \$7500. 570-847-1001
'77 Mack R-mdl tractor w/25 ton lo-boy trailer, \$7000. '89 Ford F350 enclosed utility body, \$5000. '77 Chevy stake body dump, \$500. 610-721-9574

99 Ford F450 XLT Super Duty 15,000# GVWR, 4x4 crew cab, powerstroke dsl, auto, 9' Reading steel flatbed w/racks, 2 tool boxes, AC, Reese in body fir mounted hitch & rear hitch w/trlr brake control, 86,303 mi. \$23,950; (2) 2001 International 4700 cab/chassis, DT444E dsl, 5 spd man., AC, 254" WB, hydraulic brakes, 25,500# GVWR \$18,500. Contact Harold Jones @ Grimes Truck Center, Hagerstown, MD. Cell-(301)401-0122 or hagsales@grimestruck-center.com

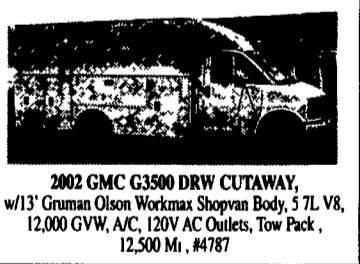
2001 CHEVROLET FT G2500 EXTENDED EXPRESS Base 12 Pass 5.7L V8 Dual A/C & Heat, Privacy glass, PW, PDL, Tilt Cruise, Black, 23,600 Mi #4775



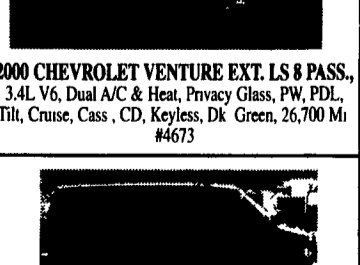
2003 FORD E350 SUPER CLUBWAGON XLT 15 PASS., 5.4L V8, Dual A/C & Heat, Privacy Glass, PW, PDL, P-Seat, Tilt, Cruise, Cass, CD, Tow Pack, 22,300 Mi Estate Green, #4781



2002 GMC G3500 DRW CUTAWAY, w/13' Gruman Olson Workmax Shopvan Body, 5.7L V8, 12,000 GVW, A/C, 120V AC Outlets, Tow Pack, 12,500 Mi, #4787



2000 CHEVROLET VENTURE EXT. LS 8 PASS., 3.4L V6, Dual A/C & Heat, Privacy Glass, PW, PDL, Tilt, Cruise, Cass, CD, Keyless, Dk Green, 26,700 Mi #4673



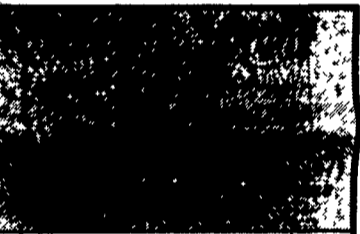
2002 FORD E150 CLUBWAGON TRAVELER 7 PASS., 4.6L V8, Rear A/C & heat, privacy glass, PW, PDL, Tilt, Cruise, Cass, CD, Keyless, Tow Pack, Leather Quads, Green/Gray 27,100 Mi #4648

Additional Inventory
7 Passenger
03 Ford E150 Club Wagon Chateau, 5.4 V8, Blue/Silver, 31,000 mi. #4729
03 Ford E-150 Club Wagon Chateau, 5.4 V8, Tan/Gray, 17,000 Mi., #4686

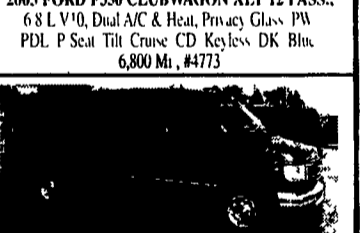
8 Passenger
03 Ford E150 Clubwagon XLT, 5.4L V8, Green, 22,500 Mi., #4735
03 Chevrolet G1500 Express LS, 5.3L V8, White, 25,800 Mi., #4756
01 Chevrolet G3500 Express LS, 8.1 V8, Dk Blue, 17,800 Mi., #4762

12 Passenger
03 Ford E350 Clubwagon XLT, 5.4L V8, White, 8,300 Mi., #4738
03 Ford E350 Club Wagon XLT, 5.4 V8, White, 7,000 Mi., #4737
03 Ford E350 Club Wagon XLT, 5.4 V8, Silver, 25,000 Mi. #4722
03 Ford E-350 Club Wagon XLT, 5.4 V8, Green, 24,000 Mi. #4723
03 Ford E-350 Club Wagon XLT, 5.4 V8, Silver, 22,000 Mi., #4689
01 Ford E350 Super Clubwagon XLT, 5.4L V8, Black, 49,400 Mi., #4783

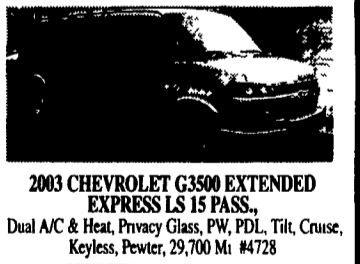
15 Passenger
01 Ford E350 Super Clubwagon XLT, 6.8L V10, Red, 59,600 Mi., #4754
00 Dodge B3500 Maxi Ram Wagon Base, 5.9L V8, Green, 43,000 Mi., #4750
00 Ford E350 Super Club Wagon XL, 5.4 V8, Green, 8,000 mi., #4732



2003 FORD F350 CLUBWAGON XLT 12 PASS., 6.8 L V10, Dual A/C & Heat, Privacy Glass, PW, PDL, P Seat Tilt Cruise CD Keyless DK Blue, 6,800 Mi., #4773



01 FORD E150 CLUB WAGON TRAVELLER 7 Passenger, 5.4 V8, Dual A/C & Heat, Privacy Glass, PW, PL, Tilt, Cruise, CD, Tow Package, Quad Captains, Leather, Entertainment Sys., Green/Gray 78,000 Mi., #4711



2003 CHEVROLET G3500 EXTENDED EXPRESS LS 15 PASS., Dual A/C & Heat, Privacy Glass, PW, PDL, Tilt, Cruise, Keyless, Pewter, 29,700 Mi #4728

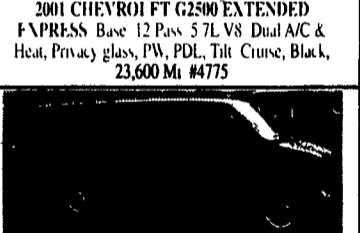


2003 CHEVROLET G1500 EXPRESS AWD, 8 PASS., 5.3L V8, Dual A/C & Heat, Privacy Glass, PW, PDL, Tilt, Cruise, Cass, CD, Keyless, Tow Pack, Maroon, 5,500 mi #4795

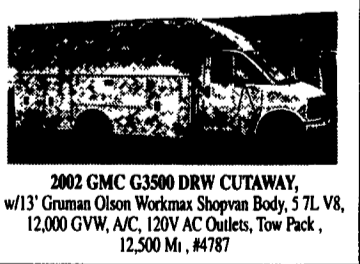
GIVE US A TRY BEFORE YOU BUY
Call for your nearest dealer Dealer inquiries welcomed
TRELLEBORG Twin Tires Which do you want?
ALLIANCE FLOATATION
Twin Floatation
I-331 I-328
600/40-22.5 42X25 00-20 NHS
600/50-22.5 48X25 00-20 NHS
700/40-22.5 48X31 00-20 NHS
700/40-26.5
Largest Stocking Specialty Tire Wholesale and Retail in the Northeast



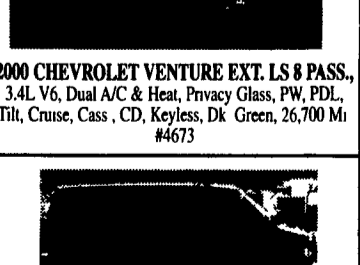
2001 CHEVROLET FT G2500 EXTENDED EXPRESS Base 12 Pass 5.7L V8 Dual A/C & Heat, Privacy glass, PW, PDL, Tilt Cruise, Black, 23,600 Mi #4775



2003 FORD E350 SUPER CLUBWAGON XLT 15 PASS., 5.4L V8, Dual A/C & Heat, Privacy Glass, PW, PDL, P-Seat, Tilt, Cruise, Cass, CD, Tow Pack, 22,300 Mi Estate Green, #4781



2002 GMC G3500 DRW CUTAWAY, w/13' Gruman Olson Workmax Shopvan Body, 5.7L V8, 12,000 GVW, A/C, 120V AC Outlets, Tow Pack, 12,500 Mi, #4787



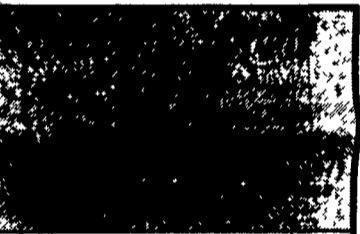
2000 CHEVROLET VENTURE EXT. LS 8 PASS., 3.4L V6, Dual A/C & Heat, Privacy Glass, PW, PDL, Tilt, Cruise, Cass, CD, Keyless, Dk Green, 26,700 Mi #4673

Additional Inventory
7 Passenger
03 Ford E150 Club Wagon Chateau, 5.4 V8, Blue/Silver, 31,000 mi. #4729
03 Ford E-150 Club Wagon Chateau, 5.4 V8, Tan/Gray, 17,000 Mi., #4686

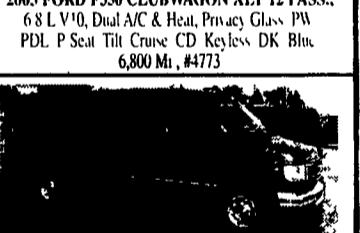
8 Passenger
03 Ford E150 Clubwagon XLT, 5.4L V8, Green, 22,500 Mi., #4735
03 Chevrolet G1500 Express LS, 5.3L V8, White, 25,800 Mi., #4756
01 Chevrolet G3500 Express LS, 8.1 V8, Dk Blue, 17,800 Mi., #4762

12 Passenger
03 Ford E350 Clubwagon XLT, 5.4L V8, White, 8,300 Mi., #4738
03 Ford E350 Club Wagon XLT, 5.4 V8, White, 7,000 Mi., #4737
03 Ford E350 Club Wagon XLT, 5.4 V8, Silver, 25,000 Mi. #4722
03 Ford E-350 Club Wagon XLT, 5.4 V8, Green, 24,000 Mi. #4723
03 Ford E-350 Club Wagon XLT, 5.4 V8, Silver, 22,000 Mi., #4689
01 Ford E350 Super Clubwagon XLT, 5.4L V8, Black, 49,400 Mi., #4783

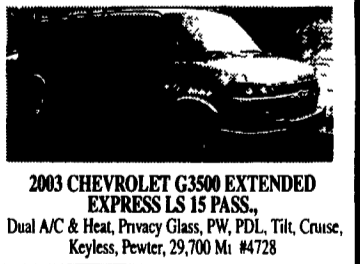
15 Passenger
01 Ford E350 Super Clubwagon XLT, 6.8L V10, Red, 59,600 Mi., #4754
00 Dodge B3500 Maxi Ram Wagon Base, 5.9L V8, Green, 43,000 Mi., #4750
00 Ford E350 Super Club Wagon XL, 5.4 V8, Green, 8,000 mi., #4732



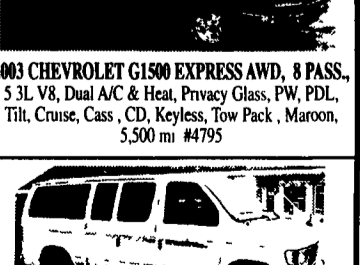
2003 FORD F350 CLUBWAGON XLT 12 PASS., 6.8 L V10, Dual A/C & Heat, Privacy Glass, PW, PDL, P Seat Tilt Cruise CD Keyless DK Blue, 6,800 Mi., #4773



01 FORD E150 CLUB WAGON TRAVELLER 7 Passenger, 5.4 V8, Dual A/C & Heat, Privacy Glass, PW, PL, Tilt, Cruise, CD, Tow Package, Quad Captains, Leather, Entertainment Sys., Green/Gray 78,000 Mi., #4711



2003 CHEVROLET G3500 EXTENDED EXPRESS LS 15 PASS., Dual A/C & Heat, Privacy Glass, PW, PDL, Tilt, Cruise, Keyless, Pewter, 29,700 Mi #4728



2003 CHEVROLET G1500 EXPRESS AWD, 8 PASS., 5.3L V8, Dual A/C & Heat, Privacy Glass, PW, PDL, Tilt, Cruise, Cass, CD, Keyless, Tow Pack, Maroon, 5,500 mi #4795