

(Continued from Page A12)

42s 5.00 one label 5.75 48s 4.00-5.00 mostly 4.50-5.00 one label 5.75 54s 4.00-5.00 mostly 4.00-4.50 63s 4.00-5.00 40 lb ctns MX Seedless Type 150s 12.50 175s 11.00-12.00 -MISC CITRUS: OFFERINGS VERY LIGHT. 10 lb ctns FL Kumquats 17.00-18.00 -ORANGES: MARKET FL Navel Lower, OTHERS ABOUT STEADY. ctns CA Shprs 1st Grade Navel 48s 22.50-23.00 86s 20.00-22.00 few 22.50 72s 19.00-22.00 58s 18.00-22.00 mostly 18.00-20.00 113s 16.00-17.00 some 19.00 Shprs Choice Navel 48s 13.50 56s 13.50-14.00 72s 13.00-13.50 88s 13.00 113s 11.50-12.00 4/5 buctns FL Navel 48s 10.50-12.00 56s 12.00 64s 10.50-12.00 Hamlins 80s 11.00 100s 9.00-10.00 ctns 10 4-lb flmbags FL Hamlins 12.00 -TANGELOS: OFFERINGS INSUFFICIENT TO QUOTE.

-TANGERINES: MARKET ABOUT STEADY. 4/5 buctns FL Sunburst 80s 21.00 100s 17.50-19.00 mostly 18.00 120s 14.00-16.00 mostly 15.00 150s 14.00

BERRIES -BLUEBERRIES: MARKET ABOUT STEADY. fits 12 4.4-oz cups with lids CL med-lge 28.00-30.00 MX med-lge 28.00 -CRANBERRIES: MARKET STEADY. ctns 24 12-oz flmbags MA Late Howe 37.00 -MISC BERRIES: MARKET HIGHER. fits 12 6-oz cups with lids MX Blackberries one label 24.00 fits 12 5.6-oz cups with lids CR Blackberries organic 18.00-21.00 MX Blackberries 18.00 -RASPBERRIES: MARKET ABOUT STEADY. fits 12 1/2-pt bkts with lids CA Red 24.00 CL Red 32.00 few 29.00 MX Red 24.00 -STRAWBERRIES: MARKET ABOUT STEADY. fits 12 1-pt bkts CA med-lge 27.00

fair cond 20.00 preferred labels 30.00-34.00 fits 8 1-lb ctns with lids CA med-lge one label 34.00

MELONS -CANTALOUPS: MARKET ABOUT STEADY. 1/2 ctns CA 12s 14.00 DR 9s 15.00 12s 14.00-16.00 15s 15.00 GU 9s 13.00-15.00 fair qual 12.00 12s 15.00 15s 15.00 18s 15.00 -HONEYDEWS: MARKET HIGHER. 1/2 ctns MX 5s 12.00 6s 11.00 -MISC MELONS: OFFERINGS INSUFFICIENT TO QUOTE.

-WATERMELONS: MARKET ABOUT STEADY. ctns per ctn FL Red Flesh Seedless Type 4s 22.00 fair cond 12.00-14.00 5s 18.00 Sangria 3s fair cond 10.00-12.00 GU Sangria 3s 12.00-14.00 mostly 13.00-14.00 MX Red Flesh Seedless Type 4s 20.00 5s 20.00 6s 13.00-14.00 occasional 12.00

NON-CITRUS FRUITS -APPLES: MARKET ABOUT STEADY. ctns trypk CA U.S. ExFcy Granny Smith 64s 22.00 72s 22.00-25.00 80s 20.00-25.00 88s 20.00-23.00 100s 18.00-21.00 113s 16.00-17.00 WA WAExFcy Red Delicious 64s 22.00 preferred labels 26.00-28.00 72s 24.00-26.00 mostly 22.00 preferred labels 18.00-20.00 one label 24.00 100s 16.00-20.00 mostly 18.00 113s 17.50-18.00 125s 18.00-19.00 Golden Delicious 64s one label 28.00 72s one label 28.00 80s one label 26.00 88s 22.50 100s 18.50-21.50 Granny Smith 56s 33.00 80s 22.50-26.00 one label 28.00 88s 22.50-26.00 one label 32.00 100s 21.50-25.00 113s 21.50 Fuji 56s one label 37.00 64s one label 38.00 72s 33.00 80s 33.00 Gala 72s one label 38.00 80s one label 38.00 88s 30.50-36.00 100s 25.00-28.00 mostly

25.00 U.S. ExFcy Granny Smith 88s 18.00 Gala 80s 22.00 ctns celpk NY U.S. ExFcy McIntosh 80s 18.00-20.00 100s 18.00 VT U.S. ExFcy McIntosh 80s 24.00 U.S. Fcy McIntosh 80s 14.00 96s 11.00 120s 9.00 lge ctns WA WAExFcy Red Delicious 60s 28.00 72s 28.00 80s 28.00 Golden Delicious 60s 26.00 ctns 12 3-lb flmbags NY U.S. Fcy Red Delicious 2 1/2" up 8.00 Golden Delicious 2 1/2" up 8.00 Gala 2 1/2" up 10.00 Rome 2 1/2" up 8.00 McIntosh 2 1/2" up 8.00 PA U.S. ExFcy Red Rome 2 1/2" up 9.00-10.00 U.S. Fcy Red Delicious 2 1/2" min 9.00 Gala 2 1/2" min 14.00 -AVOCADOS: MARKET ABOUT STEADY. ctns 2 lyr MX Hass 48s 24.00-26.00 mostly 25.00 ctns 1 lyr FL Various Greenskin Varieties 7s 10.00-12.00 8s 9.00-12.00 -BANANAS: MARKET STEADY. 40 lb ctns IMPORT 11.00 fair qual 9.00-10.00 sml 7.50-8.00 petite 13.50 40 lb ctns bagged IMPORT 10.50 20 lb ctns IMPORT Baby 10.00 -CHERRIES: OFFERINGS LIGHT. 11 lb ctns jbo 46.00-48.00 Black Varieties FLMBG 48.00 -FRUITS OTHER: ctns 1 lyr CA Apple Pears Shin Li 9s 12.00 Yoimashi 28s 10.00 FL Carambola - Star Fruit 20s 15.00 25s 15.00 ctns 2 lyr trypk CA Quince Pineapple 32s 22.00 -GRAPES: MARKET STEADY. 19 lb lugs bgd CA U.S. One Red Globe lge 15.00-16.00 mostly 16.00 med-lge 12.00-14.00 mostly 13.00 Crimson Seedless med-lge 16.00 one label 21.00-22.00 med 11.00-13.00 Autumn Royal med-lge 16.00-17.00 fair appearance 12.00 16 lb lugs bgd CA U.S. One Thompson Seedless lge 35.00 ctns 12 1-qt bkts CD Concord 15.00 -KIWIFRUIT: MARKET ABOUT STEADY. ctns 22 lb lse CA Hayward 30 sz 18.00 -MANGOES: MARKET ABOUT STEADY. fits 1 lyr BR Tommy Atkins

8s 2.50-4.00 mostly 3.50 few 5.00 9s 2.50-4.00 mostly 3.00-3.50 HT Francis 9s 8.50-9.50 mostly 9.00 10s 9.00-9.50 12s 8.50-9.00 50 lb ctns PR Green Cooking Type NONE 30 LB CTNS 20.00-25.00 -NECTARINES: OFFERINGS LIGHT. ctns 2 lyr trypk CL Royal Glo 52s 36.00-40.00 54s 36.00-40.00 -PAPAYA: MARKET ABOUT STEADY. 40 lb ctns FL Green Cooking Type 13.00-14.00 4 kg containers BR Golden 9s 9.00 35-40 lb ctns BZ Maradol 17.00-18.00 MX Maradol 22.00 ord cond 8.00-10.00 -PEACHES: OFFERINGS LIGHT. ctns 2 lyr trypk CL Rich May 40s 36.00-40.00 -PEARS: MARKET STEADY. 4/5 buctns wrpd OR U.S. One Bosc 80s 26.00 90s 24.00 100s 22.00 110s 21.00 120s 20.00 WA U.S. One Bartlett 80s 26.00-26.50 90s 22.50-24.00 100s 20.50-22.00 D'Anjou 70s 21.50 80s 21.50 90s 20.50-22.00 100s 20.50-22.00 1/2 ctns PA Seckel 2 1/2" min 9.00 -PERSIMMONS: MARKET ABOUT STEADY. ctns 1 lyr CA Fuyu 15s 9.00 Hachiya 12s 10.00 15s 8.00-9.00 18s 8.00 20s 7.00-8.00 mostly 7.00 22s 8.00 24s 6.00-7.00 mostly 6.00 25 lb ctns sml CA Hachiya lge 12.00-13.00 med 12.00 sml 10.00 -PINEAPPLES: MARKET ABOUT STEADY. ctns 1 lyr CR golden ripe 6s 9.00 7s 12.00 8s 12.00 EC golden ripe 5s 12.00 6s 11.00-12.00 mostly 12.00 7s 12.00 -PLANTAINS: MARKET STEADY. 50 lb ctns CB Yellow 15.50-16.00 mostly 16.00 EC Green 15.50-16.00 mostly 16.00 -PLUMS: OFFERINGS INSUFFICIENT TO QUOTE.

-POMEGRANATES: ctns 2-lyr CA Wonderful 26s 18.00-20.00 28s 18.00-20.00 -PRUNES: OFFERINGS INSUFFICIENT TO QUOTE.

Philadelphia Herbs

Philadelphia Terminal
Report of November 26, 2003
Report Supplied By USDA

MISC HERBS -ANISE: 1/2 ctns CA 24s 12.00 -ARRUGULA: OFFERINGS LIGHT. 4 lb cartons CA Baby Type 14.00 4/5 buctns bchd FL 24s 17.00-20.00 -BASIL: MARKET STEADY. ctns bchd FL 15s 8.00-9.00 mostly 9.00 1 kg ctns bchd IS 12s 11.00-13.00 -CELERIAC (CELERY ROOT): 20 lb crts lse CD 10.00 ctns CA 12s 15.00 -CHIVES: 1 kg ctns bchd IS 12s 16.00 -CILANTRO: MARKET ABOUT STEADY. 4/5 buctns bchd FL 30s 10.00 ctns approx 20 lb TX 30s 15.00-16.00 mostly 16.00 ctns bchd MX 60s 14.00 TX 30s 10.00 -DILL: MARKET STEADY. ctns bchd AZ 24s 10.00 TX 24s 14.00 crts bchd FL 24s few 12.00 ctns approx 20 lb TX 24s 16.00-17.00 mostly 17.00 -DRY ESCHALOT: 10 lb sks CA 8.00 NL 8.50-9.00 -LEMON GRASS: 30 lb ctns CA 22.00 -MARJORAM: 1 kg ctns bchd IS 12s 13.00 -MINT: crts bchd FL 12s few 9.00 1 kg ctns bchd IS 12s 10.00 -OREGANO: 1 kg ctns bchd IS 12s 13.00 -ROSEMARY: 1 kg ctns bchd IS 12s 13.00 -SAGE 1 kg ctns bchd IS 12s 13.00 -SALSIFY: OFFERINGS INSUFFICIENT TO QUOTE.

-TARRAGON: 1 kg ctns bchd IS 12s 17.00 -THYME: 1 kg ctns bchd IS 12s 13.00 -WATERCRESS: ctns bchd FL 12s 7.00 24s 11.00-12.00

Philadelphia Onions, Potatoes

Philadelphia Terminal Market
November 25, 2003
Report Supplied By USDA

ONIONS AND POTATOES -ONIONS DRY: MARKET ABOUT STEADY. US# 1 OR GENERALLY GOOD QUAL AND COND UNLESS OTHERWISE STATED. Yellow Globe Type NY 50 lb sks med 8.00-9.00 mostly 9.00 sml-med 6.50-7.00 Grano CA 50 lb sks jbo 13.00 Hybrid ID/OR 50 lb sks Super Col 16.00 col 13.50-14.00 mostly 14.00 jbo 11.50-13.00 mostly 12.00 fair cond 8.00 Sweets PE 40 lb ctns jbo 20.00 White ID/OR 50 lb sks jbo 15.00-18.00 mostly 15.00-16.00 Red Globe Type MI 25 lb sks med 5.50-6.00 NY 25 lb sks jbo 8.00-9.00 mostly 8.00 med 6.00-7.00 -POTATOES. MARKET ABOUT STEADY. US# 1 SZ A WASHED OR BRUSHED UNLESS OTHERWISE STATED. Russet CD Prince Edward Island 50 lb ctns 100s 8.50 Burbank ID bld 10 5-lb sks non sz A 8.00-8.50 50 lb ctns 40s 17.50 80s 15.00-16.00 60s 15.00-16.00 some 17.00 70s 15.00-17.50 mostly 15.00-16.00 80s 13.00-14.00 90s 11.00-12.50 mostly 12.00 100s 10.00 120s 10.00 U.S. Two 50 lb sks 6 oz min 8.00-9.00 Norkotah CD Prince Edward Island bld 10 5-lb sks non sz A 6.50-7.00 50 lb ctns 70s 12.00 80s 10.00 90s 9.00 100s 8.00 120s 8.00 90 50 lb ctns 90s 9.00 100s 8.00 Round Red CD 50 lb sks 7.00 sz B 11.00-12.00 WA 50 lb ctns 12.00 sz B 18.00-20.00 Round White CD Prince Edward Island 50 lb sks 5.00-5.75 lge 7.00-8.00 some 6.50 DE 50 lb sks 5.00 lge 7.00-7.50 LI 50 lb sks 4.50-5.00 5.00 lge 6.50-7.00 7.00 NJ 10 lb sks lse 1.20 Local Re-pack 50 lb sks 4.50-5.00 lge 6.50-7.00 Yellow Type Yukon Gold NY 50 lb sks 12.00 sz B 14.00 WA 50 lb ctns 20.00 sz B 20.00

Lebanon Produce Auction

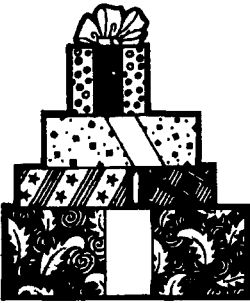
Reistville, Pa.
Report Supplied by Auction
Nov. 25, 2003

APPLES: 4.50-8.00 1/2 BU.
BROCCOLI: .50 HEAD.
CABBAGE: RED .30 HEAD, GREEN .30-50 HEAD.
CAULIFLOWER: .90 HEAD.
POTATOES: RED 2.25 1/2 BU., WHITE .50-3.25 1/2 BU.
PUMPKINS: NECK 2.60 EACH.
RADISHES: 2.00-3.00 BUNMCH.
SQUASH: BUTTERNUT .10-.25 EACH.
TOMATOES; 37.00 BOX.
NEXT WEEK'S SALE DAY IS TUES., 9:30 A.M.

CREMO'S VARIETY OUTLET

CHRISTMAS

Super
SAVIN' DAYS



Nov. 29 Thru Dec. 7 - Sat. 8am-6pm; Sun. 8am-5pm; Mon.-Fri. 8am-8pm

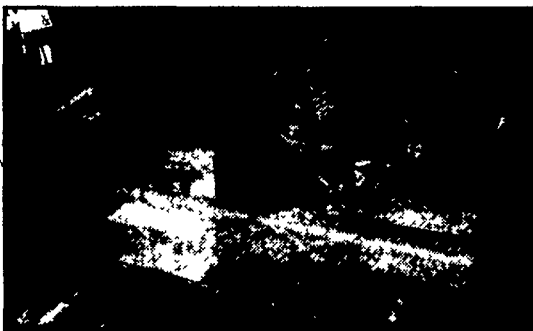
30% OFF Sticker Price
HEAVY DUTY TOOLS

Engine stands, Engine cranes, Jack stands, Floor jacks, Parts washers and fluid, Pipe benders, Hand trucks, Sand blasters, Welding kits, Chain blocks, etc.

50% OFF EVERYTHING ELSE!

Sticker Price

Gloves, Tarps, Bungees, Hand tools, Automotive tools, Milton Air accessories, Electrical tools, Air tools, Dremel accessories, Ceramics, Touchlamps, and thousands of other items

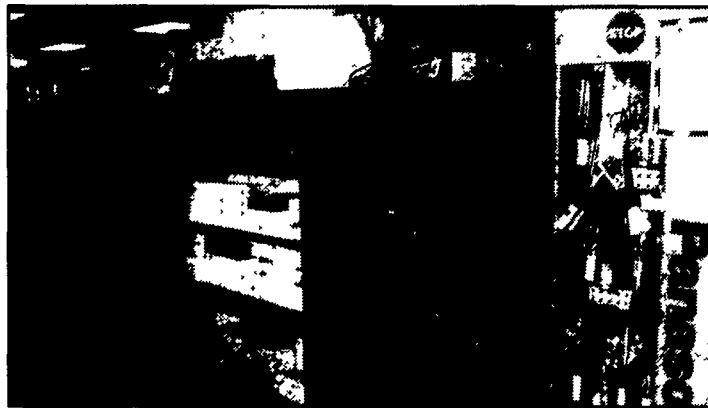


Bus Loads Invited



CANDLES 20% OFF

EVERYTHING IS ON SALE



CREMO'S VARIETY OUTLET

6430 Carlisle Pike,
Mechanicsburg, PA
Located in front of

Silver Spring Flea Market
on Route 15, next to KOHLS

Toll free: 1 800-342-7366

We accept all major Credit Cards

No other discounts apply.

Phone Cards not on sale.

Lancaster Farming

Check out our Website!

www.lancasterfarming.com



CLOSED SUNDAYS, NEW YEAR,
EASTER MONDAY, ASCENSION DAY,
WHIT MONDAY, OCT. 11, THANKSGIVING,
CHRISTMAS & DECEMBER 26TH

FISHER FURNITURE

NEW AND USED FURNITURE
Antique & Collectables

BUS. HRS. BOX 57
MON.-THURS. 8-5 1129 GEORGETOWN RD.
FRI., 8-8, SAT. 8-12 BART, PA 17503

Hi Calcium Lime

Dry, applied with boom truck
80% CCE-fast acting

Starting \$14.25 per ton

Central Berks Co., PA
Call for quotes in other areas
\$1/per ton COD discount

Dean Hirneisen Lime Spreading
610-775-3454 (cell) 610-780-4298