

# REH Auctions & Liquidations, Inc.

## Complete Liquidation for PAUGH CONTRACTORS

1000 State Road, Bensalem, PA 19020

November 6, 2003 @ 9 am

Open 2/5 from 8 AM to 4 PM

Payment with Guaranteed Funds

TOLL FREE (866) 577-7347

Trucks and Containers; Trailer Jacks; Over 15 Vises; Approx. 10 Welder Generators; Air  
Conditioners; Wave Runners; Pedestal Fans; Drill Presses; Grease; Fuel Tanks; Tool Boxes full  
of Tools; Hydraulic Lift; Anvils; Hammer Bits; Cable; Reciprocating Saw; Railroad Jacks; Discharge Hose;  
New and Used Gas Pumps; New and Used Drill Bits; Valves; Pipe Nipples; Bar Grating;  
Welding; Cement Mixers; Shelves Full of Copper Fittings, Pipe Nipples, and Other Misc.  
Aluminum Loading Docks; Approx. 10 Drop Buckets; Used Bricks

### AERIAL LIFT

Pettibone Model OMNI 40- 40' Telescopic Aerial Lift, S/N 2410015

### TRUCK MOUNTED CRANE

Alenco Model 8T-1 (13,000#) Truck Mounted Crane

### TRUCK TRACTORS

1975 Mack Model R685ST Tandem Axle Truck Tractor, Vin# 56027,  
1970 Mack Model R685LST Tandem Axle Truck Tractor, Vin #16308,  
Mack Model U79SST Tandem Axle Truck Tractor, Vin #1010

### LOWBOY TRAILERS

(2) Rogers Model THPG35DSF263 (35 Ton) T/A Lowboy, S/N 11308,  
Rogers Model 40 Ton T/A Drop Side Lowboy Trailer  
(4) Aluminum Storage Trailers.

### DUMP TRAILER

Fruehauf 30' Tandem Axle Demolition Dump Trailer

### FLATBED TRAILER

Trailmobile 40' Tandem Axle Flatbed Trailer

### DROPDECK TRAILER

40' Tandem Axle Dropdeck Trailer

### ROLL-OFF CONTAINERS

(3) 20 Yard Steel Containers, (2) 30 Yard Steel Containers

### MISCELLANEOUS TRUCKS

1987 Autocar Model Tandem Axle Roll-Off Container Truck,  
Ford Model F-700 Single Axle Rollback Truck, Vin #F70FVBC6337,  
Chevrolet Model C60 Single Axle Dump Truck,  
Chevrolet Model Kurbmaster Step Van,  
Ford Model 8000 Tandem Axle Lube Truck

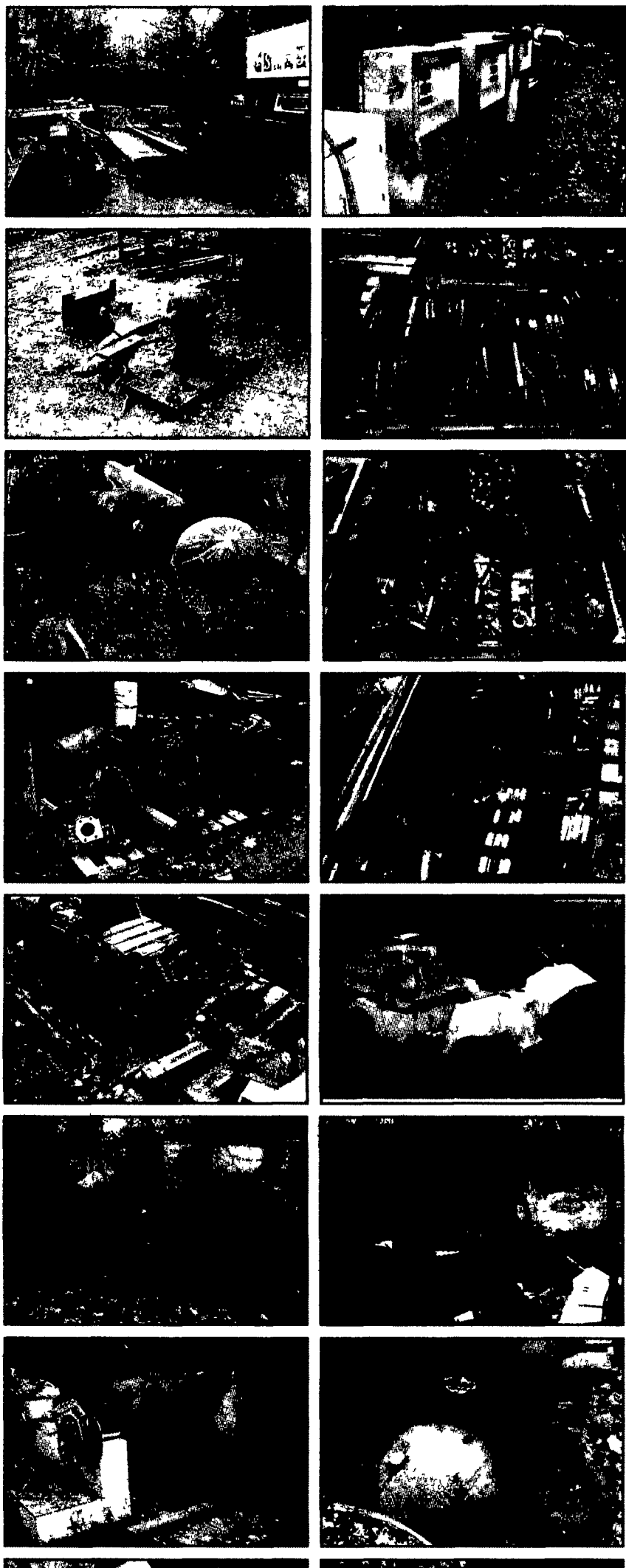
### PICKUP TRUCKS

1993 Ford Model F-350XL Pickup Truck,  
1993 Ford Model F-350 Pickup Truck,  
1992 Ford Model F-150 Pickup Truck,  
IHC Model 1100 4x4 Crew Cab Pickup Truck

### BOATS

MFG 16' Fiberglass Boat with a 40 HP Evinrude Motor and Homemade Trailer,  
16' Fiberglass Boat with a 30 HP Johnson Motor

Follow State Street Road for 3/4 mile. Dead ends into State Road. Make right onto State



**REH AUCTIONS AND LIQUIDATIONS**  
350 EAST BROADWAY  
SALEM NJ, 08079  
OFFICE PHONE: 856 935 9225  
OFFICE FAX: 856 935 9226

PA# AU-001920-0

