

Webasto BlueHeat

BlueHeat
Feel the warmth!

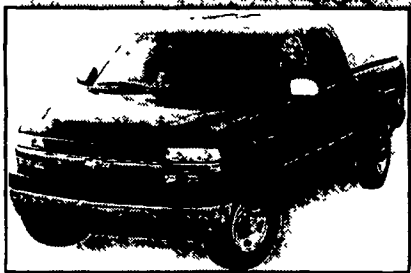
BlueHeat heats the engine and the interior without idling. BlueHeat also provides a pre-warmed interior, melting away snow and ice from the windshield. Your vehicle is ready to go when you are!

Applications

- GMC/Chevy Duramax
- Dodge Ram Cummins
- Ford Powerstroke 7.3 & 6.0
- Hummer
- Volvo, Jeep, Jaguar, others

Benefits

- Preheated engine
- Warm interior
- Ice-free windshields
- Less engine wear
- Lower fuel usage
- 2 year limited warranty



PENN DIESEL SERVICE CO.,
HARRISBURG, PA.
717.545.4207 • 800-535-2913

Factory distributor/installer

350 TRUCKS / TRAILERS

7511 Allentown Blvd.
Harrisburg, PA 17112

AFFORDABLE CARS AND TRUCKS, INC.

717-652-1925
FAX 717-652-4888
Hours: Mon. & Tues. 9-9
Wed. thru Sat. 9-6

75 TRUCKS IN STOCK

"You Gotta Believe!!"

New Exit #72A, Rt. 81 N; Rt. 22 East of Harrisburg; 3 Miles North of Hershey Park

01 FORD EXCURSION LIMITED 4x4

7.3 Powerstroke
Leather, 3rd Seat,
Dual AC & Heat,
Loaded &
Flawless, 112K

\$22,995



87 FORD F150 XL 4x4

300 cyl., AT,
AC, V8,
100,000 Mi.,
Good Work
Truck

\$2,995



LESHER SALES & SERVICE

2700 Cumberland St.
Lebanon, Pa.
(Route 422 West)



717-273-4535
website: www.leshermacksales.com



New Trucks

- (1) 2004 CX613 Day Cab, E7-427, 10-Spd., Air Susp., 169 W.B.
- (1) 2004 CV713 Granite, AI-427-Aset, RTP 14908LL, 265" W.B.

Coming Off Lease

- 1998 Mack CH613 42" Flattop \$20,250
- (2) 2001 Mack CH613 Day Cabs, E-7-350, 10-Spd., 169" W.B., Air-ride, 160K & 180K Miles

Technician Needed
Call for Details

All Farmers Should Have One w/Hook Lift
(accepts multiple bodies)
Call For More Details



Many other Trucks in Stock - Call for Details

TRAILER ENTERPRISES, INC.

13121 Maugansville Rd.
Hagerstown, MD 21740
301/791-5343
Fax: 301/791-9363

ON SITE - FULL SERVICE HITCH & REPAIR FACILITY.
MAKING SURE YOU GET THE BEST IN THE INDUSTRY!

- X MERHOW - EBY - MORITZ - BISON & OTHERS
- X GOOSENECK FLATBEDS
- X CARGO TRAILERS
- X AUTO CARRIERS
- X LAWN SERVICE & UTILITY
- X INDUSTRIAL & EQUIPMENT

• HOURS •

"REVVIN' TO TAKE CARE OF ALL YOUR TRAILER NEEDS" Monday - Friday 8 to 5; Saturday 9 to 12
See us at www.trailerenterprises.com



MERHOW VERTILE, 2-HORSE w/DRIVING ROOM, ALL ALUMINUM
See Them At www.merhow.com



MORITZ CBS 6 X 13 STOCK TRAILER \$3,690
Check them out at www.moritzinternational.com



20' X 7' MAVERICK MODEL GOOSENECK (SHOWN w/OPT HUB CAPS) \$10,700

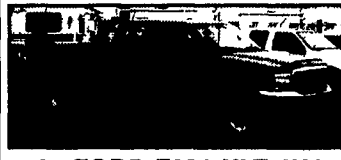
"BRI-MAR" YOU WON'T BUY THEM FOR LESS ANYWHERE! GUARANTEED!

TRAILERS ARE OUR BUSINESS!

99 DODGE RAM 4x4 2500 SLT, Laramie, Quad Door Long Box Cummins Turbo 5 Spd., Fully Loaded Flawless Texas 1 Owner This Is A Most Desired Truck On The Used Market Only 100,000 Mi. Hurry
\$19,995



98 DODGE DAKOTA SLT 4X4 SPORT Ext Cab, V6, AT, AC, PW, PDL, Tilt, Cruise & More 100,000 Mi Dk Green
\$7,995



99 FORD F350 XLT 4X4 CREW CAB SUPERDUTY 7.3 Powerstroke Dsl., AT, AC, PW, PDL, Tilt & More This is Perfect! 120K, Bright Red!
\$20,995



88 CHEVY C-30 4x4 CREW LONGBOX SCOTTSDALE, 2 Tone Red/Black 350 V8, 5 Spd No AC, 100,000 Mi Just Traded And This Is A Nice Truck! I Have The Only One On The East Coast
\$6,500

Disclaimer Mileage listed for your convenience only, it is approximate, not to be relied on as exact Sorry for any inconvenience

87 FORD F150 XL 4X4 EXT. 302 V8, AT, 6 Cyl., AC, Good Clean Truck! 100,000 Mi
\$3,995



00 FORD F350 XLT 4X4 SUPERDUTY CREW CAB, Longbox, 7.3 Powerstroke, 6 Spd., AC, PW, PDL, Tilt, Towing & More This 100,000 Mi Tk Looks & Runs Like a New \$49,000 Truck For Only
\$21,995



94 1/2 FORD F-250 XLT H.D. 4x4 7.3L Powerstroke, 5-speed, AC, PW, PDL, 4 New 10 Ply Radials, 200K but Runs and Looks Like a 70K Mile Truck
\$8,995



96 FORD F350 XLT 4x4 H.D. 1-TON 7.3 Powerstroke Dsl., 5 Spd., AC & Loaded Up Really Good! New Rubber & Like New 1-Owner, 150K But Looks Like 50K
\$14,995

Disclaimer Mileage listed for your convenience only, it is approximate, not to be relied on as exact Sorry for any inconvenience

86 CHEV. 2500 4x4 SCOTTSDALE H.D. 8600 GVW Rare 350 V8 & Factory Stick Mint Condition, Truly Flawless Body Ready To Work 100,000 Mi
\$5,995



97 FORD F250 XLT 4x4 EXT. Longbox, 7.3 Powerstroke, AT, AC, PW, PDL, Tilt, & More, 2 Tone Blue, 100,000 Mi
\$15,995



96 FORD F350 XL 4x4 1-Ton, 9000 GVW, H.D., 7.3 Powerstroke dsl., 5-speed, AC, cloth seat, Real Clean Truck, No Disappointments All blue, 140K
\$12,995



97 FORD F250 XLT 4X4 Ext Longbox, 7.3 Powerstroke Dsl., 5-Speed, AC, PW, PDL, Tilt, Cruise, Beautiful 2 Tone Green Paint, Truck Is Sharp, 150K
\$13,995

Disclaimer Mileage listed for your convenience only, it is approximate, not to be relied on as exact Sorry for any inconvenience