



2000 Ford F550 Cab & Chassis Diesel
\$23,195

WJM Trucks and Equipment

570/385-5065

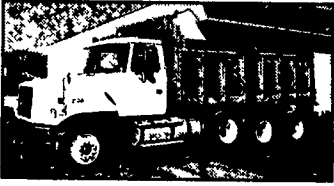
If You Need It, We Will Find It For You!

52 ZERBE STREET, CRESSONA PA, 17929
OTHER CONTACT NUMBER: WILLIAM J MILLER JR. 570/617-1351

Financing Available

Other Inventory

- 2000 Multiquip MB25 Electric 1" Rebar Bender \$4,250
- Assorted Electric WB Floor Scrubbers Call for Pricing
- Other Small Inventory Avail. Call for Listings
- 1999 Ingersoll Rand 185 CFM Air Compressor, JD Diesel 330 Hrs \$7,800
- 2002 Ingersoll Rand 8 KW Generator, Brand New Factory Warranty Diesel Engine \$5,200
- 1999 Wacker RT560 WB Trench Compactor, 22" Pad Drums, Remote, 876 Hrs \$9,750
- 1993 Target Pro 65 II 4-Cyl. Del., 36" Blade, Water Controls, 1000 Hrs \$3,250



1998 Volvo WG64F, Cummins 330 hp Dsl w/Fuller 8LL Trans., Hendrickson 46K Rears, Rogers 16' Steel Dump, Triaxle
\$48,250



1997 GMC 3500, HD, 4x4 Dump Diesel
\$19,200



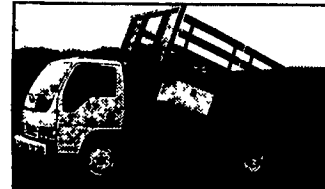
2000 Extec 5000S, 3-Way Split Screen w/Only 621 Hrs., on Deutz Diesel, also Extra Screens,
\$76,295



2001 Chevrolet 2500HD, Extend. Cab, 4x4
\$16,780



24' Vans Ready For Sale, 2000 Ford F650, Diesel Auto,
\$28,795



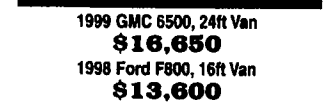
1999 Isuzu, Stake Body Dump, 5.4 V8, Auto, Only 24,000 MI., New Tires
\$22,250



1999 GMC W4, Utility Truck, V8 Gas, Automatic,
\$18,795



1999 GMC 6500, 24ft Van
\$16,650



1998 Ford F800, 16ft Van
\$13,600



1997 Genie Up And Over, 34', Elec. Lift, OSHA Cert.
\$13,250



2000 Hyster 10,000 lb Fork Lift, Hard Tires
\$9,950



Many in Stock
2000 HMX Electric Pallet Jack
\$2,900
2000 Exide 3 Phase Chargers
\$1,000



1999 Case Maxx Sneaker, Trencher & Vibratory Plow
\$13,575

KEYSTONE TARPS

SERVICE & SALES
Is A Manufacturer Of Custom Tarps

- Systems
- Tarp Straps
- Storage Covers
- Load Straps
- Gloves
- Used Railroad Ties

1-800-798-TARP (8277)

FAX 570-435-0036 570-435-0752

ONE OWNER 85,000 miles, 1997 freightliner FL70, white, a/c, 5.9 cummins, 210 hp, fuller, 5 speed, air brakes, lift gate, 24 ft. morgan box, 26,000 gvw non cdl. Also 33,000 gvw available, 11x22.5 tires, all 75% fully serviced, new Pa insp. **\$17,800**
570-467-0400

1985 Ford Fertilizer Truck
3208 cat, 10 spd. good condition with Tyler 16 ton tender box. 14' Side discharge auger all hydraulic. Good condition.
Call 1-888-845-1814
Lanc. Co.

(ONE OWNER) 85,000 Miles...1997 Freightliner F170, A/C, 5.9 Cummins, 210 HP Fuller 5 Spd., 24ft. Morgan Box, Lift Gate, 26,000 GVW (Non CDL)...33,000 GVW Available, 11x22.5 Tires All 80%, Fully Serviced, New PA Inspection
\$17,500
570-467-0400

1994 International 4900 Refer
DT 466 @ 210 HP, 5 spd, Air brakes, 32,700 GVW 24' Morgan Refrigerated body, Thermo King KDII unit w/elec stbdy, Roll-up Door, Truck & Body very clean & Straight, A must see, Truck has been family owned & operated
\$14,500
Call 570/585-1707

SUPER FLOTATION READY TO WORK
1995 Ford Manure Truck
12.7L 430 HP, Detroit Series 60, 15 Speed RR Transmission, Heavy Spec Frame & Rears, 4800 GL Tank/6" Discharge,
Priced to Sell.
Call 1-877-328-4450

YARNALLS Equipment Co.

4171 Horseshoe Pike (Rt. 322), Honey Brook, PA 19344

Over 100 Trailers In Stock

Call Today Toll Free: 866-228-0408
www.yarnalls.com

EXISS ALUMINUM TRAILERS, INC.

EXISS In Stock • EXISS All Aluminum • EXISS 7 Year Warranty • EXISS In Stock •

<p>Continental Cargo Aluminum Landscape Trailers 12-14 Ft SA and 16 Ft TA In Stock from \$1,650</p>	<p>7' Wide, 7' High Inside, 2 Center Gates, Insulated Front 24 Ft. Was \$11,575 Now \$10,270</p>	<p>5 Big Tex High Side Trailers in Stock - Reduced 10 Ft \$1,273, 12 Ft \$1,363, 14Ft TA \$2,205</p>
<p>7'6" High, Straight Load, 2 Escape Doors, Was \$12,175 Now \$11,516</p>	<p>3 Horse Slant w/Dressing Room, Step Up, Was \$12,575 Sport \$11,950</p>	<p>Straight Load, 7'6" Inside Height, Dressing Room, 2 Horse, Was \$14,997 Now \$14,323</p>
<p>Fully Insulated, 4 Ft. Dressing Room 4H Head To Head, Was \$26,000 Now \$24,625</p>	<p>Used 6 Horse Head To Head Rampload, Garage Kept. \$6,500</p>	<p>Continental Cargo 2 Ft Dbl Rear Doors-Side Door - Reduced WAS \$4,905 Now \$4,625</p>

MasterCard REESE VISA

Financing - Trade Ins - Repairs
Hours: Mon., Tues., Wed., Fri. 8:30-5:00;
Thurs. 8:30-7:00, Sat 9:00-1:00 PM.
8 Miles Off Exit 298 PA Turnpike

WESTERN SNOWPLOWS