



234

CARS FOR SALE

MELARD TRUCK AND AUTO SALES

1289 Division Hwy., Ephrata, Pa.
(717) 738-4870

- 2000 FORD WINDSTAR LX, 3.8 auto, dual air/heat, elec windows/locks, cruise, tilt, AM/FM cass, 25,000 miles, black, **\$11,500**
- 2000 FORD WINDSTAR SPORT, 3.8 auto, dual air/heat, elec windows/locks, cruise, tilt, AM/FM cass, 21,000 miles, black, **\$11,900**
- 1999 FORD WINDSTAR LX, 3.8 auto, dual air/heat, elec windows/locks/seat, AM/FM cass, 56,000 miles, black, **\$9,900**
- 1998 PONTIAC MONTENA, 3.4 auto, dual air/heat, elec windows/locks/seat, AM/FM cass, 67,000 miles, red, **\$9,800**
- 1999 FORD WINDSTAR LX, 3.8 auto, dual air/heat, elec windows/locks, cruise, tilt, AM/FM cass, 53,000 miles, navy, **\$9,000**
- 1999 CHEVY ASTRO LS, AWD, V6 auto, dual air, elec windows/locks, cruise, tilt, AM/FM cass, 62,000 miles, white, **\$10,900**
- 1998 CHEVY ASTRO LS AWD, V6 auto, air, elec windows/locks, cruise, tilt, AM/FM cass, 58,000 miles, rust, **\$9,000**
- 1996 CHEVY TAHOE LS 4x4, V8 auto, air, cruise, tilt, AM/FM, cass, elec windows/locks, 63,000 miles **\$11,900**
- 1995 FORD ESCORT, 4 cyl, auto, air, 4 door, AM/FM cass, 65,000 miles, teal, **\$3,500**
- 1997 CHEVY EXPRESS, Mark 111, conversion, V8, auto, dual air/heat, elec windows/locks, AM/FM cass, cruise, tilt, 72,000 miles, green, **\$10,900**
- 1988 MARMON P57 3406B, 425 hp Cat, 14515 15 speed, 3.90 ratio Eaton rears, all alum wheels, on Hendrickson air ride, **\$9,000**
- 1990 FORD E350 BUS, V8 gas, auto, 23 pass, new engine **\$3,900**
- 2000 CHEVY ASTRO LS AWD, 4.3 auto, dual air & heat, elec windows/locks, cruise, tilt, AM/FM/Cass, 42,000 miles, green
- 1995 FORD E350 BUS, Powerstroke diesel, auto, 25 passenger with luggage compartment, 67,000 miles
- 1998 FORD E350 BUS, Powerstroke diesel, auto, 23 passenger, 112,000 miles
- 1999 FORD E450 BUS, Powerstroke diesel, auto, 25 passenger with luggage compartment, 68,000 miles
- 2000 FORD E450 BUS, Powerstroke diesel, auto, 25 passenger with luggage compartment, 67,000 miles

320 MISCELLANEOUS FOR SALE

SS portable salad bar w/sneeze guard, great for market stand, \$300 obo cell 717-330-1620

Butcher furnace w/round opening to set kettle, good cond, 717-486-5384

Candy Makers 200 lbs of fresh quality white chocolate in 10 lb blocks, \$12.50/per block, or all for \$200 obo 570-348-2151

170 gal Plastic Tank, Totes, washed, plastic drums. 717-397-7695

Master Carvers duplicating machine, Modl 10-4 \$3000 Furniture parts, Decoys, etc. (cell) 609-472-4161 (home) 609-268-8032

Old Spoke tenon cutters, Tongs, Signed draw knife, Forged pick axes, Strap hinges, Pintles, 3 Hay forks, Forged hay knife, Wooden water pump, 2 wagon wheels, Beam borer, 2 Wagon jacks, 2 Steel tractor seats, Rare ten plate stove, etc (610)670-9620

New solar coils (4), heating or cooling, 6'x5', 5" thick, 7'x5', 6" thick; 7.5'x5', 12" thick; 9'x6', 6.5" thick; 5000 gal. skid tank, used for fuel or water, 3000 gal SS tank on truck frame. Possible delivery (215)766-8361

Snap-on welder, \$3,500 609-894-2915

Hauling with 22 ft roll-back truck. Call Glenn Martin (717)575-6370.

Dbl Post Drive Thru Hyd Lifts, in ground, \$800/pr lift, 215-860-2524 or 215-783-1361

1 hydraulic press model T-420. Cut-off saw, ex hoses, ends and collets inc. \$4,800 obo. Call 570-837-2167

400 Fence or building poles, 8'-12' heavy creosote, take all @ \$4.00/ea obo 215-799-4092

Paper Shredder

10 HP adjustable shred size w/input conveyor. Great for animal bedding. **Best Offer!** CALL 610/927-2100

325 ANTIQUES/ COLLECTIBLES

Perfect Christmas Gift!
Deluxe Hardcover Book "Lancaster County Postcards Volume Two"

Illustrated w/520 old local views (109 in color) \$30.00 incl. PA Sales Tax

Call 717/290-7948 or 717/721-9273

350

TRUCKS/ TRAILERS



\$16,500

1990 Crew Cab w/Utility Bed and Crane 100,000 miles, diesel 466, Automatic.

Diversified Liquidators, York Pa 717-309-7450

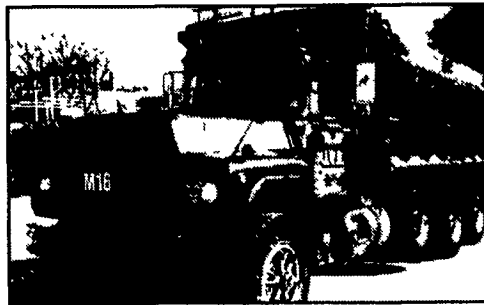


Int. 1995, 8100 model, 3176 Cat, 275 hp, 9 spd, new, 6 cu. body, 11-22.5 rubber.....\$18,000 After 8 pm, (908) 879-5760

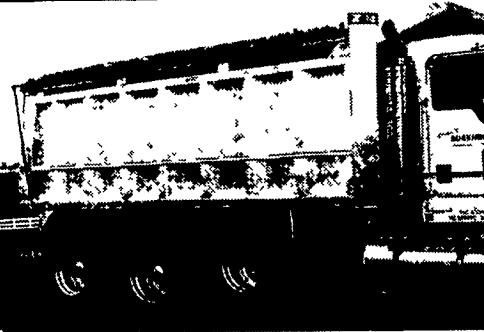


1987 Mack RD600 tandem dump, 300hp 4 valve, Jake, 6 sp. w/lo hole, 18yd heated body, pintle and air at rear. Very good condition, \$19,500 b/o. **845-386-5917**

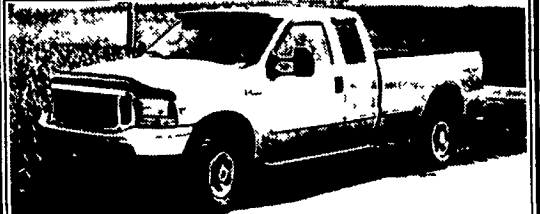
TRUCKS FOR SALE



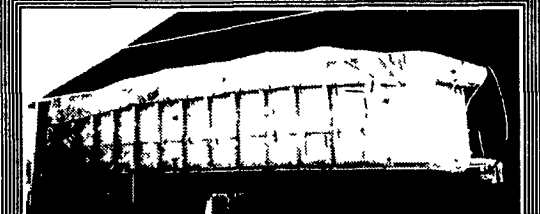
(5) (3) (2) 1988-1994 Mack Tri-Axle Dumps 300 HP Engines, Clean, Low Mileage (610) 670-1957



17 1/2' Alum Hwey Dump, 54" Side, 60" Gate, \$6,000 OBO 717-629-6172



'99 F350 Lariat Supercab 4x4, loaded, powerstroke diesel, 6 spd, leather seats, 64,000 mi **\$23,000 OBO** Must Sell New Truck Ordered (717) 768-8726 or (717) 572-2168



28' Hill Aluminum Dump Trailer, Frame Type, **\$6,000.** Franklin Co. (717) 532-2893



New Nissan UD Trucks In Stock

84 Mack Cab Over Auto Trans. With 14' Box Diesel

97 UD 1400, 14' Stake Body 5 Speed, A/C, Diesel

99 Chev., Cargo Van 1500 Express A1, AC

91 UD 1800, 16' Box Six Speed, Diesel

94 UD 1800, 14' Box Six Speed, A/C, Diesel

95 UD 2600, 18' Box 25,950 LB. GVW, Diesel Eng.

Also 1997 Fruehauf Box Trailer, - Stake Dump & Dry Freight Body In Stock - Call for Details. Leasing & Financing Available.

INTERNATIONAL CENTRAL GARAGE, INC.
South 2nd St. (Rt. 419) Womelsdorf, (Berks Co.) Pa.
610-269-4581 or 610-269-1387

WM. COHEN & SONS, INC.

"THE TRUCK PARTS STORE"
HEAVY DUTY TRUCK PARTS - NEW & USED - REBUILT REARS & TRANSMISSIONS
610-269-1298 Fax 610-269-0787 www.cohentruckparts.com



1990 GMC 7000 DT-506 Detroit 8.2 Diesel, 5 Speed, 2 Speed Rear, 7,000 Lbs, 19,000 Lbs Rear, Hydraulic Brakes, Salt Spreader, 12 Ft Angle Plow



New Flatbeds Available Sizes currently available are 12', 14', 20', 22' and 24' Racks are also available



2000 GMC SIERRA SL 4300 V6, 5 Speed, 79,000 miles, 4x4, 8 ft bed with liner, cloth interior, A/C, AM/FM \$12,500/OBO



(8) 40' - 45' 1970's & Newer Steel Flatbed Trailers (also have drop deck trailers) some have sliding tandems, all in good condition \$2,500/Ea and Up



Michigan Loader Model L30 Quick Coupler, Comes With 1 Yard Bucket and 60" Forks, Runs Excellent



Aluminum Tanker/Trailers 7500 gal and up



1972 Ford F-800 Tanker 391 V8 Gas, Auto, 86,371 miles, 4 Wheel drive, air brakes, power steering, 2000 gallon tank, Single Rear, 27,500 GVW \$6,500



Kalmar Forklift, Propane Powered, 4435 lb capacity, 42" forks, 192" lift, cushion tires, 2194 hours



1989 GMC Kodiak, 3208T Cat Engine 5 Speed, 2 Speed, 4 Door Cab, P/S, 167" wheel base, 35,000 lb G V W 108,614 miles, 10x20 tires, hydraulic brakes, ball hitch setup for gooseneck trailer