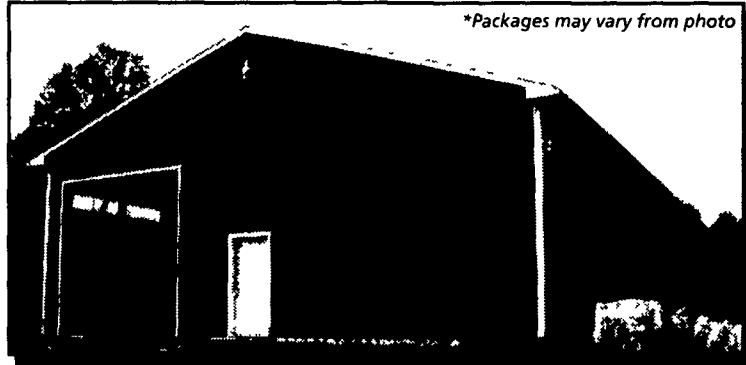


# CARTER THE **YARD** Lumber

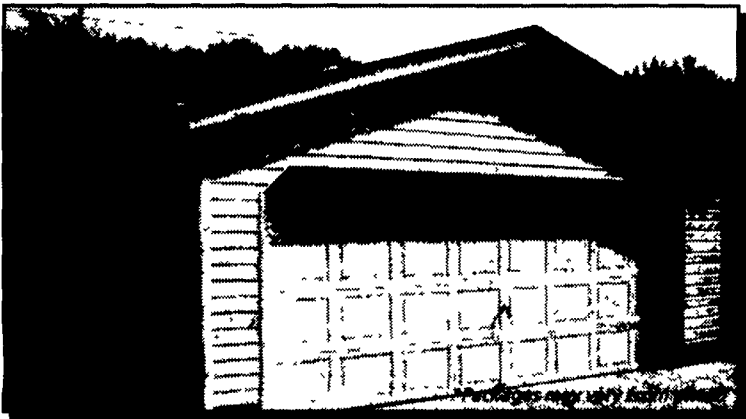
## Pole Barns & Garages



\*Packages may vary from photo

Painted Steel Siding w/ sliding door	8' HIGH 24' x 24'	10' HIGH 30' x 40'	12' HIGH 40' x 64'
25 yr. Painted steel roof	<b>\$2,767</b>	<b>\$4,845</b>	<b>\$10,342</b>

\* Also available in T1-11 and vinyl - customize your pole building



	1 CAR	2 CAR	
Standard	18' x 22'	22' x 24'	26' x 24'
VINYL SIDING	<b>\$2,899</b>	<b>\$3,508</b>	<b>\$3,907</b>

\* Also available in basic & premium packages & many other sizes

### FREE COMPUTER DESIGN

Any size, any style, any design. Check your local Carter Lumber store or carterlumber.com for an estimate.

#### STANDARD FEATURES

•24', 30', 40' widths x any length •Treated posts & skirt boards •2" x 4" wall girts •T1-11, metal or vinyl siding (24' & 30' wide only) •Truss w/1' eave overhang & soffit • 25 yr. O.C. Fiberglas® shingles on 7/16" OSB sheathing or Fabral® metal roofing • Sliding or overhead door w/hardware • Optional 3' steel passage door • Nails, trim & plans • 40' barns available 14' high

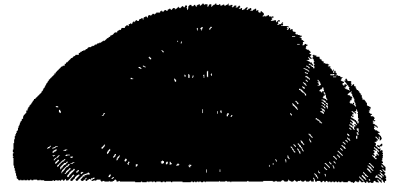
### FREE COMPUTER DESIGN

Any size, any style, any design. Check your local Carter Lumber store or carterlumber.com for an estimate.

#### STANDARD FEATURES

•16" O.C. wall framing w/ treated bottom plate •Siding •Roof truss w/1' eave overhang & soffit •1/2" OSB roof sheathing •15# felt •25 yr O.C. Fiberglas® shingles •Ridgevent •Eave & gable drip edge •CSE-100 3/0 man door •9100 series garage door (insulated) • Also includes nails, hardware, plans & instructions

## Field Drain Tile



Baughman Tile Co.

•Solid or perforated	<b>\$17<sup>99</sup></b>
4" x 100'..... (9504-solid / 9542-perf)	<b>\$44<sup>99</sup></b>
4" x 250'..... (9500-solid / 9502-perf)	

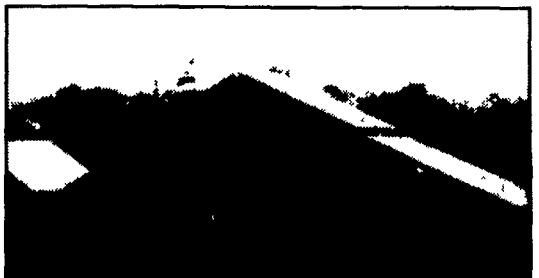
## Metal Roofing



•Custom lengths available •White in stock •19 colors to choose from •36" actual coverage •30 year warranty

PAINTED GRANDRIB 3	GALVANIZED GRANDRIB 3
<b>\$153</b> per ft.	<b>\$121</b> per ft.

## Trusses



### 24' SUPER TRUSS

•4/12 pitch with 1' overhang •Good for 4' on center at 30 lb. live load. Check local listing codes (15575)

**\$32<sup>99</sup>**

## Dimension Lumber

•We stock quality lumber in large quantities •Contact your local Carter Lumber for available species •Hem Fir or Doug Fir available in 22', 24' and 26'

	10'	12'	14'	16'	18'	20'
SPF 2" x 4"	<b>\$2<sup>91</sup></b>	<b>\$3<sup>44</sup></b>	<b>\$4<sup>34</sup></b>	<b>\$5<sup>39</sup></b>	<b>\$6<sup>24</sup></b>	<b>\$6<sup>96</sup></b>
SPF 2" x 6"	<b>\$4<sup>55</sup></b>	<b>\$5<sup>04</sup></b>	<b>\$5<sup>67</sup></b>	<b>\$7<sup>44</sup></b>	<b>\$9<sup>13</sup></b>	<b>\$9<sup>98</sup></b>
SPF 2" x 8"	<b>\$5<sup>43</sup></b>	<b>\$7<sup>36</sup></b>	<b>\$7<sup>95</sup></b>	<b>\$9<sup>77</sup></b>	<b>\$12<sup>12</sup></b>	<b>\$14<sup>13</sup></b>
SPF 2" x 10"	<b>\$6<sup>87</sup></b>	<b>\$9<sup>56</sup></b>	<b>\$12<sup>32</sup></b>	<b>\$13<sup>97</sup></b>	<b>\$15<sup>30</sup></b>	<b>\$15<sup>67</sup></b>
SPF 2" x 12"	<b>\$12<sup>00</sup></b>	<b>\$13<sup>68</sup></b>	<b>\$15<sup>60</sup></b>	<b>\$19<sup>58</sup></b>	<b>\$25<sup>20</sup></b>	<b>\$28<sup>00</sup></b>

## Treated Lumber

•All of our treated lumber is quality grade stamped and carries a limited lifetime warranty against rot and decay • Southern Yellow Pine

	8'	10'	12'	14'	16'
#2 2" x 4"	<b>\$3<sup>19</sup></b>	<b>\$4<sup>49</sup></b>	<b>\$5<sup>29</sup></b>	<b>\$7<sup>89</sup></b>	<b>\$8<sup>99</sup></b>
#2 2" x 6"	<b>\$3<sup>89</sup></b>	<b>\$5<sup>39</sup></b>	<b>\$6<sup>99</sup></b>	<b>\$8<sup>39</sup></b>	<b>\$11<sup>29</sup></b>
#2 2" x 8"	<b>\$6<sup>39</sup></b>	<b>\$9<sup>09</sup></b>	<b>\$10<sup>89</sup></b>	<b>\$11<sup>69</sup></b>	<b>\$15<sup>19</sup></b>
Standard 5/4" x 6"	<b>\$3<sup>99</sup></b>	<b>\$4<sup>39</sup></b>	<b>\$5<sup>39</sup></b>	<b>\$5<sup>69</sup></b>	<b>\$8<sup>39</sup></b>
4" x 4"	<b>\$6<sup>49</sup></b>	<b>\$9<sup>29</sup></b>	<b>\$11<sup>39</sup></b>	<b>\$12<sup>09</sup></b>	<b>\$14<sup>69</sup></b>

**HOURS: Mon. thru Fri. 7:30-6:00 • Sat. 7:30-4:00 • Sun. 9:00-3:00**

Good 11/23 thru 11/29/03

**LANCASTER**  
LBR. (717) 397-4829 / FAX (717) 397-4865  
(Closed Sunday)

**ELIZABETHTOWN**  
LBR. (717) 367-1886 / FAX (717) 367-3858  
PEH. (717) 367-7707

**CARLISLE**  
LBR. (717) 245-0404 / FAX (717) 245-9361  
PEH. (717) 245-2486 / FAX (717) 245-0295

**CHAMBERSBURG**  
LBR. (717) 263-0822 / FAX (717) 263-7077

**NORTHUMBERLAND**  
LBR. (570) 473-8311 / FAX (570) 473-7149



Visit us online at carterlumber.com