

Public Auction Register

Closing Date Monday 5:00 P.M.
of each week's publication

Internet Sale Register will be updated
by Friday at 12 Noon

ATTENTION AUCTIONEERS

All sales register info needs complete address,
street, town, county & state.

SAT. DEC. 6 - 10AM
Mountville
Adamstown, MD. Farm
Tractors, Farm Equip.
Forklift Equip, Mowers.
Wolfe Auctions. 301-898-

0340.
SAT. DEC. 6 - 10AM Vict.
home on 8/10 acre lot,
antiques, furn, glass,
lawn/garden/tools, HH

PUBLIC AUCTION

VALUABLE REAL ESTATE
EAST EARL TWP.
TERRE HILL AREA
5 ACRE TRACT
TUESDAY, DEC. 16
2 P.M.

Auction held on tract site. Take 897 S from Fivepointville into Terre Hill Boro Rt 897 becomes Broad St Turn right onto Vine Street approx 4/10 of a mile just outside Boro to property E Earl Twp

Real estate consists of 5 acres M/L level land mostly tillable with tree line - woodland boundary Zoned AG District with sub division potential. Over 1040' road frontage on both sides of Vine Street Terms 10% down, balance 60 days Inspection anytime For brochure, landplotting or financing call Auctioneers 717-733-1006

Randal V. Kline, Roy E. Good, Jr.,
Keith Snyder, Auctioneers
Lic. #499 - #2116L - #3433



www.klinekreidergood.com

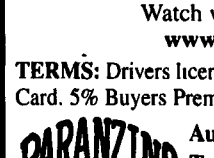
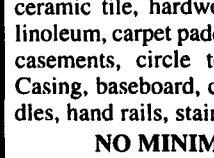
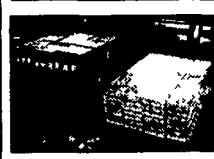
HOME IMPROVEMENT AUCTION

Sat., NOV. 22nd @ 10:00AM

WASHINGTON CO. FAIRGROUNDS
2151 N. Main Street • Washington, PA 15301

Directions: From Rt. 79 exit # 41, west on Racetrack Rd., left on Pike St., right on Country Club Rd, to auction site on right (across from Trolley Museum)
LUMBER • DOORS • HARDWOOD FLOORING • TRIM
CERAMIC TILE • HOT TUB • KITCHEN CABINET SETS • TOOLS

EXTERIOR DOORS: Pre-hung entrance doors including solid oak and mahogany entrance systems, half and full view, leaded glass, sidelights, sliding & patio door units. INTERIOR DOORS: Pre-hung raised 6 panel interior doors, flush, raised panel bi-folds and French interior door units. KITCHEN & BATH: Corian® style kitchen sinks, Formica kitchen counter tops, kitchen cabinet sets, designer kitchen and bath faucets, tub and shower faucets, jetted tubs, pedestal sinks and toilets. HARDWARE: lock sets, lever style bed, bath and closet door sets. LIGHTING: recessed lights, chandeliers, ceiling, pendant & outdoor light fixtures. SPECIAL INTEREST: electrical supplies, recessed lights, Kassell Grandfather, mantle and wall clocks with cherry cabinets, New Hot Tubs w/ warranty, mattress and box spring sets, slot machines. NAME BRAND TOOLS: framing, finishing, brad & flooring nailers, air compressors, table, scroll & miter saws, tile and glass saws, saw blades, air hoses, router bit sets and more. FLOORING: Carpet Rolls in residential, commercial, berbers, plushes, textures, hand and machine made Oriental rugs from India, ceramic tile, hardwood flooring, laminate flooring, linoleum, carpet padding. WINDOWS: double hung, casements, circle tops and fixed. MOULDING: Casing, baseboard, crown moulding, chair rail, spindles, hand rails, stair parts.



NO MINIMUMS NO RESERVES
Watch website for updates:
www.pbauctions.com

TERMS: Drivers license to register Cash, Check or Credit Card. 5% Buyers Premium Inventory subject to change.

Auctioneer:
Tom Paranzino lic #AU003736,
Tim Paranzino lic #AU004070,
Jim Kellner lic #AU003924
330-849-3133

PUBLIC AUCTION

BRICK LANCHESTER - 2 CAR GAR.

4 ACRE

(MT. AIRY - DURLACH AREA)

FRI., DEC. 12

3 P.M.

Location: 125 Ice House Hill Rd., Stevens (Mt. Airy) Rt 322 west of Ephrata turn right Durlach Rd at Horst's Auction. Follow Durlach Rd. around "S" turn toward Mt Airy Turn left Ice House Hill Rd. House on right. Clay Twp



Brick & frame one level ranch style house with 1624 sq. ft kitchen, living rm., 1st floor family rm. Large 2nd rec/family rm w/brick wall & hearth, 2/3 bdrms, 2 full baths, oil forced air heat & central AC 2 car garage. Level 1 acre lot with mature pine & hardwood trees. Professionally landscaped. Solid brick home in move-in condition. 10'x16' utility bldg. included. Inspection by appointment or open house on Sats., Nov 22, 29 or Dec 6 from 1-4pm For color brochure, land plotting or financing call Auctioneers at 717-733-1006.

CURVIN S. & DORCAS E. WENGER
717-738-3381

Randal V. Kline, Roy E. Good, Jr.,
Keith Snyder, Auctioneers
Lic. #499 - #2116 - #3433



www.klinekreidergood.com

PUBLIC AUCTION

Consignment Sale

November 22, 2003

10 A.M.

LOCATION: Laurel Auction Market, US # 13 & ST. RT. 9, Laurel DE 19956

TRACTORS:

Farmall Super A.V. w/Cult, Farmall Cub w/Woods Belly Mower. MF 1135 Dsl. Multi Pwr. 18-4-38, Ford 8700 Dsl. CHA, Dual Pwr. w/18-4-38 Duals

COMBINES:

John Deere 7700 Dsl. Hydro w/216 Table

TRUCKS, VEHICLES, TRAILERS:

1988 Freightliner Cat Engine, Road Ranger Transmission, Sleeper, Wetline. 1971 Int. 1700 Truck, 5 Spd, 2 Spd Rear. 1966 Int. 1600 Truck, 4 Spd, 2 Spd Rear, w/16 ft Meadows Dump. 1970's Chevy 3/4 Ton Pickup, 4 Spd, 8CTL Motor. 1989 Ford F-250 4x4, AC, V8, 1991 Ford Escort Station Wagon, Auto, Air; 1989 Plymouth Acclaim, Auto, Air Pwr Pwr L, Montone 30 ft Alumn Dump Trailer Fontaine 20 ft East Trailer w/Ramps

TILLAGE:

IH 18 Manual Fold Disk, IH 4' 16 Mold Board, AC 15' Disk, Brillion 9 Chisel Plow, Ferguson 14' Chisel Plow, Case 12' Chisel Plow, Brillion 16' Fold Up Field Cult, IH #10 5 Shank Ripper, Brillion 6' 30' S Tyne Cult, JD 6' 16" Semi Mount Plow, IH 18 Fold Up Field Cult w/Rear Tines, Kewanee 15' Disk, Brillion 16' Soil Pulverizer, 1 Bottom Snap Hitch Moldboard and Plow, Ford 6' 3ph Disk

MISC.:

2- 300 Gallon Raven Spray Tanks, 1 Row JD #18 Corn Picker, New Holland 851 Round Baler, MW Fransgard Hay Rake, New Idea 214 Spreader, Kill Bros. #350 Grain Body on Unverferth Running Gear, CIH 5300 Grain Drill w/Unverferth Field Cult, DDO, PW, New Holland Super 77 Baler, 6 Ft J Bar Scraper, 3ph Dirt Scoop, 4 ft 3ph King Kutter Bush Hog, 1 Row 3ph Cult, New Holland 355 Grinder Mixer w/Hyd Controls, Int. #7 Lime Fert Distributor, IH 16 ft Flail Chopper, Mdl 2450 Hobbs Reel Rain, Approx 1100 ft 4 1/2 in Hose, 518 New Holland Spreader, IH 5 ft Belly Mower, Farmhand 836 Loader

Terms: Cash or Good Check Day of Sale.
Approximately 2 or 3 Wagon Loads of Parts Etc.
More Coming in Daily.

As Subject to Additions & Deletions.

Consign Early for
Advertisement of Equipment

Auctioneer:

LEE COLLINS - 302-875-2970

Cell: 302-236-0344

Auction Staff Has The Right to
Accept or Reject Any Item.

Not Responsible for Accidents.

Lunch Provided by the Salisbury Mennonite Church.

goods at 4860 Homeville Rd., Cochranville, Upper Oxford Twp., Chester Co., PA by Barr Davis Auct. AU002422-L, AU002421-L, 717-442-9221.

SAT. DEC. 6 - 11AM Real Estate, 244 ac. Cumberland Co. farm in 2 parcels along Longs Gap Rd., Carlisle, PA, by Pae Fortna Auct. AU-1711-L 717-867-4451.

THURS. DEC. 9 - Lumber & building supplies, 109 N. Maple Ave., Leola, Wolgemuth Auction, 717-656-2947.

TUES. DEC. 9 - Christmas goat, lamb & sheep sale,

receiving begins at 9AM until 5PM; at Carlisle Livestock Market Inc., 548 Alexander Spring Rd., Carlisle, PA; Mkt. ph. 717-249-4511.

TUES. DEC. 9 - 10AM 76.7 acre farm at 8992 Bosley Rd., Stewartstown, York Co., PA, farm mach, pers. prop. by Randal V. Kline, #499, 717-733-1006.

TUES. DEC. 9 - 3PM 13.5 acre real estate, "1764 Benedict & Anna Eschelman Homestead" at 695 Green Hill Rd., Conestoga Twp, Lanc. Co. PA, by Horst Auct 717-871-0936.

DEC. 10 - 9AM Public

auct. for Capital Self Storage. Call for locations B.J. Jennings AU-003910 717-268-0020.

THUR. DEC. 11 - Lumber & bldg. supplies by Wolgemuth Auct. Dennis Wolgemuth #2357, 717-656-2947.

THURS. DEC. 11 - 11AM Real estate (2.5 sty frame dwelling approx. 1440 sq. ft. living space), antiques, HH goods, primitives, tools, misc. at 1575 Main St., Goodville, E. Earl Twp, Lanc. Co. PA by Horst Aucts., AU438L, 717-859-1331, 717-738-3080.

PUBLIC AUCTION

This liquidation of tractors, equipment and parts, due to the retirement of Eddie Bloomfield, will be offered at public auction on

November 22, 2003, at 9:00 AM

Tractors starting @ approx 11:00AM - largest sold first in the town of Richboro, PA in lower Bucks County.

30+ TRACTOR, FARM & COLLECTIBLE:

1978 JD 4440 w/cab, quad, 18x38" & duals, 5400 hrs; 1969 JD 4020 side console, wfe; 18x34; JD 2030 dsl, 4500 hrs, 2 hyd, rack/pinion axles, hi-lo trans; JD 300, loader, 3pt, PS, PTO; JD 520, 3 pt, PS; JD 70, dsl, 3pt, (fixer); JD 630, 3pt, straight sheet metal, needs eng work; JD 60N 3pt, 1954, wide R axle, 801 hitch, PS, & culti; JD A 1937, w/rnd-spoke F & R; JD B 1937, unstyler w/cast rears; JD 40 high-crop, good tag, nice metal, w/ orig culti & big hopper side dresser; Case 1070 w/cab (Black Knight), 4200 hrs, 20x38, needs cosmetics, bought new, rare; Case 830, early, eagle hitch, std trans, 15x38, runs good; Case SC, 1952, wfe, eagle hitch, hand clutch; Case VAS, rare, single row, eagle hitch & culti frame; IH 756, dsl, wfe, 3pt, dual PTO & hyd, good cond, needs paint, IH 464, gas, low hrs, 3pt, weathered; SM, wfe, 1953, no hyd; Farmall 140 high-crop w/culti & side dresser; SC w/culti, extra wide rear axle, not running, Farmall B, crank start, w/Woods mower; Farmall F-12, 1937 w/lift & culti frame; Factory WFE for F-12 or F-14; F-20, 1937 w/F&H rnd-spoke whls, MC-Deering 10-20, 1931, straight fact steel & (set of rod bands sold sep); F-14, 1938, hyd lift, cast whls, extra slow trans; 1931 Regular, F&H rnd-spoke, 36" whls; M, live hyd, for parts; IH TD6, blade, stuck, rough cond; Massey Harris 44, eng stuck, and a Pony; Ferguson TO20, set up for 5' beds; Ferguson 35; Allis B; AC D-14 w/ltr, front pump, & reverser w/snap coupler hitch; Cat D4, blade, elec start pony, functional, needs work; Oliver 550; MM UTU, straight metal; Ford 4000 gas, reverse-drive forklift, 3-stage, 12' mast, does not run; AC Model C w/belly mower; CASE unstyler model RC

EQUIPMENT:

JD 6600 comb, hydro, dsl; 443 Oil bath cone head, 443 Hi-tin, 215 Flex-head on custom header trailer; JD 346 (wire-tie), baler, w/ hyd kicker; JD 640, rake, good cond; N Holland 1010 bale wagon; (six bale wagons w/running gears & 5 flat wagons on gears), 1 gravity bin on 6-ton gears; New Holland silage wgn on 2-axle running gears; 1 Farmhand hi-lift dump cart; IH 990 mower cond; JD 7000, 30", 8-row plntr w/No-Till coulters, liq-fert; JD 290 corn plntr, New Idea 323 corn picker; IH 5100, drill, 21x7, w/dbl disc & press whls; Hollander 1-row transplanter; Mecca, 12' bed prep; Woods, 315, bat-wing mower, 15', good cond; Woods 15', mech end-fold, rotary mower, clean; Brillion 12' bush hog type mower; Woods 5' 3pt bush hog; Woods C80, (2) one pull-type, one 3pt.; NIMCO 3pt 6' rotary mower; (2) fert buggys, 2-axle, need work; Lely 3pt PTO spreader, several EZ-FLO drills; Field sprayers - (1)FMC 2-axle w/4 cyl gas, rotating head field blnk, tanks: (5) 1100 gal plastic tanks w/valves, 500 gal plastic saddle tank w/centrifuge pump, (4) loaders: New Idea 504 w/JD 3010 buckets, Pipe-frame ldr from JD 520; Model 46? from JD 2020, no brackets, JD 95 combine needs engine work; Fox trailer chopper w/2 row cornhead

TILLAGE EQUIPMENT:

White 4x18 semi-mount trip plow; IH 510 4x16 trip plow; IH 4x16 trailer, trip plow; Pittsburgh 5-bottom semi-mount; JD 4x14, trailer, trip; JD 3x16, trailer, non-trip, spoke whls; White 252 14' transport disk; Oliver 272 18' folding disk, needs work; Dunham-Lehr 21' folding, packer, good cond; Chattanooga 14' culti-mulcher; JD 12' culti-mulcher w/outboard whls, Brillion double roller seeder, 8'; Brillion 14' end transport packer, Case, 3pt, 12-shank chisel plow; 5 ft pwr harrow

TRUCKS:

Mack B61T, 1961, w/673 & duplex & wetline; 1978 Mack Superliner 300, 7-spd, air-ride, wetline; Flory 24' alum dump; 3-axle 35' flatbed, 2-axle 35' flatbed; General pintle-hitch trailer, 28' 3-axle, elec brakes, 1958 Dodge 500, 42K miles, hemi; 1968 Ford N600 w/roll-off & grain body, Ford F-150, 1984 club cab; Trailers: (3) two-horse,

MISCELLANEOUS:

Several Hit & Miss engines including IHC model M w/encl crank, Witte, headless, complete but stuck; Fairbanks-Morse, model Z; Economy 1-1/2 HP, ser # 303754; Nova upright; Engines & power units: Nova upright, governed, Maytag twin, 62 Continental, Case model S, 164 Willy's; approx 50 magnetos from various engines; Literature: parts books, operators manuals & sales lit; Parts: fenders, hoods, culti, mower, PTO shafts; many JD & IH parts and attachments; a variety of farm-related items and tools Ingersol Rand Air compressor trailer type.

Selling for: Eddie Bloomfield, 215-431-6459

Auctioneer's Note:

In addition to being a lifelong farmer, Mr. Bloomfield also enjoys attending public auctions. There is something here for everyone, from Mack trucks to antique tractors to implements and pickup trucks. A few neighbors will also be consigning pieces to the sale. Loading facilities and loading equipment will be onsite the day of sale and on Monday (November 24).

J. Edward Leaman, Auctioneer

PA State License#: AU002034L

Willow Street, PA 17584 717-464-2903

Directions: From the Northeast (NJ & NY city): Take I-95 south thru Trenton, NJ. After Trenton, at Newtown Exit, take PA Rt 332 West into Richboro. In Richboro, take Rt 232 North, pass the shopping center, turn right onto Twining Ford Rd, the road turns to gravel, the sale is on the left.

All Others: From the PA Turnpike (I-276) take exit 351-US Rt 1 south FOR ONE BLOCK. Follow signs for PA Rt 132 West into Southampton Take Rt 232 North into Richboro, PA. Pass the shopping center, turn right onto Twining Ford Rd, the road turns to gravel, sale is on the left.

Terms & Conditions: Full payment day of sale. Cash, Visa, MasterCard, Discover or Check (two forms of ID required for payment with check) All items sold AS-IS, WHERE-IS, WITH NO GUARANTEES IMPLIED OR EXPRESSED.