

7511 Allentown Blvd.  
Harrisburg, PA 17112

75 TRUCKS  
IN STOCK

**AFFORDABLE  
CARS AND TRUCKS, INC.**

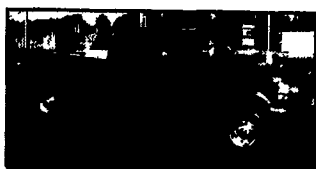
717-652-1925  
FAX 717-652-4888  
Hours: Mon. & Tues. 9-9  
Wed. thru Sat. 9-6

**"You Gotta Believe!!"**

New Exit #72A, Rt. 81 N; Rt. 22 East of Harrisburg; 3 Miles North of Hershey Park

**97 FORD F250 XLT 4x4**

EXT LONGBOX, H D, 8800 GVW, 351 V8, AT, AC, PW, PDL, Tilt, Cruise, + More Very sharp truck, new tires, 140K



\$9,995

**96 DODGE 1500 4x4 LARAMIE SLT**

SHORTBOX, EXT CAB, 360 V8, AT, AC, PW, PDL, Leer Cap Super Nice, Low Mile Truck 70,000 Mi Flawless!



\$10,995



**97 CHEV 1500 4x4 SILVERADO**

3rd Door, SHORTBOX, EXT. CAB, VORTEC 350, AT, AC, PW, PDL, Tilt, + more Leer Cap! Only 82K, Mint Condition \$11,995



**93 FORD F150 4x4 XLT SHORTBED,**

300 6 Cylinder, 5 Spd, Fully Loaded, Extra Nice Truck, 125K \$4,995



**00 DODGE RAM 2500 4X4 SLT LARAMIE QUAD DOOR,** Longbed, Cummins Turbo DSL, AT, AC, PW, PDL, Leather Interior, This Truck is All Black & Like New, 102K \$19,995



**00 FORD F250 XLT 4X4 SUPER DUTY QUAD DOOR LONG BOX**

7.3 Powerstroke, AT, AC, PW, PDL, Tilt, Cruise & Much More, 100,000 Mi \$19,995



**90 CHEV 1500 4X4 SILVERADO PU**

350 V8, AT, AC, PW, Longbox, New PA Insp, Very Clean Truck, 1-Owner, 150K, No Rust! \$4,995



**99 FORD F-350 XLT 4x4 SUPER DUTY 1-Ton**

7.3L Powerstroke, AT, AC, PW, PDL, Tilt, 110K, Black, Extremely Nice Truck \$17,995



**95 DODGE RAM 2500 4X4 SLT LARAMIE H.D.**

8600 GVW, 360 V8, AT, AC, + All Power, 100,000 Mi. \$8,995



**98 DODGE RAM 2500 4X4 SLT LARAMIE**

Cummins Turbo Disc, 5 SP Only 60,000 Miles With All the Equipment Want a New Truck For 1/2 the Price! \$19,995



**87 CHEVY 1500 SILVERADO 4X4**

V8, AT, AC, PW, PDL, Nice Clean Truck, 130K Only \$3,495



**99 DODGE RAM 4x4 2500 SLT,**

Laramie, Quad Door, Long Box, Cummins Turbo 5 Spd, Fully Loaded, Flawless, Texas 1-Owner This is A Most Desired Truck On The Used Market. Only 100,000 Mi. Hurry \$19,995



**97 FORD F150 XLT SHORTBOX**

V8, AT, AC, PW, PDL, Tilt, Cruise, Really Good Looking Truck, All Black & She's A Beauty 100,000 Mi. Only \$6,995



**86 CHEV. 2500 4x4 SCOTTSDALE H.D.**

8600 GVW Rare 350 V8 & Factory Stick Mint Condition, Truly Flawless Body. Ready To Work 100,000 Mi \$5,995



**98 DODGE DAKOTA SLT 4X4 SPORT**

Ext. Cab, V6, AT, AC, PW, PDL, Tilt, Cruise & More. 100,000 Mi. Dk. Green \$7,995



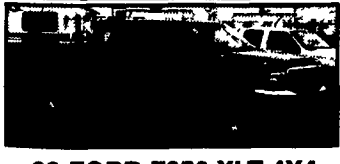
**00 FORD F350 XLT 4X4 SUPERDUTY CREW CAB,**

Longbox, 7.3 Powerstroke, 6 Spd., AC, PW, PDL, Tilt, Towing & More This 100,000 Mi. Tk Looks & Runs Like a New \$49,000 Truck For Only \$21,995



**97 FORD F250 XLT 4x4 EXT.**

Longbed, 7.3 Powerstroke, AT, AC, PW, PDL, Tilt, & More, 2 Tone Blue, 100,000 Mi. \$15,995



**99 FORD F350 XLT 4X4 CREW CAB SUPERDUTY**

7.3 Powerstroke Dsl., AT, AC, PW, PDL, Tilt & More. This is Perfect! 120K, Bright Red! \$20,995



**94 1/2 FORD F-250 XLT H.D. 4x4**

7.3L Powerstroke, 5-speed, AC, PW, PDL, 4 New 10 Ply Radials, 200K but Runs and Looks Like a 70K Mile Truck \$8,995



**96 FORD F350 XL 4x4**

1-Ton, 9000 GVW, H D, 7.3 Powerstroke dsl, 5-speed, AC, cloth seat, Real Clean Truck, No Disappointments All blue, 140K \$12,995



**88 CHEVY C-30 4x4 CREW LONGBOX SCOTTSDALE,**

2 Tone Red/Black 350 V8, 5 Spd No AC, 100,000 Mi Just Traded And This is A Nice Truck! I Have The Only One On The East Coast \$6,995



**97 FORD F250 XLT 4X4**

7.3 Powerstroke Dsl, 5 Spd, AC, Tilt, PW, PDL, 1-Owner & it's a Real Creampuff, 94K, Dk. Red \$14,995



**97 FORD F250 XLT 4X4**

Ext Longbox, 7.3 Powerstroke Dsl, 5-Speed, AC, PW, PDL, Tilt, Cruise, Beautiful 2 Tone Green Paint, Truck Is Sharp, 150K \$13,995

Dodge 1995, SLT, 4x4, 2,500V-10, 5 spd, power seats/windows/locks, air, bedliner, leercap, tow package, leather seats, exc, 104K, 570-995-5056

**72 International 1600 14' Stake Body Dump**  
Split Rear, 4 spd. No CDL required. \$5,800 invested in NEW 345 Engine, Clutch Other parts 2001. Approx. 1500 miles on engine. Asking \$1,900 215/538-3886 or 610/966-4258 Quakerstown

360 REAL ESTATE

Franklin Co., PA. Exit 14 PA Tpk, 188 ac woodland, ex hunting, joins St. Land on 2 sides. Secluded. Be the owner of your own mountain. Asking \$1595/per acre Keefer Real Estate (717)349-2262 or 717-261-7554

Want to RENT small farm w/good barn, small acre. & pasture. 717-861-7460

1+ Ac commercial property near I-81 in PA, bldg has w/s/elec, \$122,500 717-709-4043

S. Jeff. Co. N.Y. 150 Free Stall pipeline milker 400 A. more avail. + cattle & machinery. Lancaster Farming L-540 POB 609 Ephrata PA 17522

64 A dairy farm, 60 tie stall solar type dairy farm built in 2000, 5BR 2BA farmhouse, 50x50 bank barn for horses. Centre Co. 814-349-2698.

FOR RENT: Level Limestone Soil, 40-50 tillable acres, irrigation available located between East Petersburg & Manheim, PA Call Ken 717-898-7651

For Sale: Juniata Co, 1995 log cabin on .5 acre. 717-348-0496

Old farmhouse & barn, approx 6 acs, close to St. Gamelands. Juniata Co, PA. (717)734-3415

New Bloomfield area 2.9 ac. brick front, remodeled 3 bdrm 4BR DR lrg. LR fire. garage screened porch. porch oil-fired hot water heat cent. air finish base. 12x24 barn 36x62 metal bldg+9x20 add. \$425,000 (717)582-8841

14 A mountain lot, private & secluded, beautiful views, standard system, close to Ski Round-top & Pinchot State Park, \$109,900. 717-432-7732

30 acs; camp & rec business. Ulrich Professionals Realty (717)273-9366

10 acres; wooded; Ulrich Professional Realty (717)273-9366

CABIN on 3 wooded Ac, complete w/wall, septic, elec, full kit, 1BR plus loft & Ba. Full time or recreational, 10 mi from Lock Haven, near Sproul State Forest Exterior, Verneer Log asking \$65,000. Fields Real Estate (717)248-5451

92 Ac, 2 Br, dbl wide, 1/2 open, 1/2 wood, add 60% complete, 2 Ba, FP insert, all material on site, 7 rooms, 2 streams, pond, great hunting, E Potter Co. \$165k (814)367-5674

Farm for sale: 850 acres half in Warren Twp, Bradford Co, PA, half-town of Owego, Tioga Co, NY-5 houses, 4 barns, 335 tillable acres, 100 acres pasture, borders PGL 219. 570-395-3339

WANT: handyman special south or north of Pittsburgh, w/or without land. 610-845-7325

FOR RENT 13,500 sq ft of clean dry storage, 1/2 12' ceilings, 1/2 8' ceilings, will consider renting part or all of area. Lanc Co, 717-285-5920

Land for Sale in Zions Grove Schuylkill Co. 9.52 acres farmland, beautiful view; \$74,900. 19.94 acres-woodland; \$69,900. Perked & Approved! Call (570)385-6922 Kathy

3 Bedford Co, PA farms 4 Sale by owner; Call or Email 4 more info. (443)309-4068; mbcorle@aol.com

Land 4 Sale, Clearfield Co.; 7mils SW of Phillipsburg; Lot sizes 60 acre-120 acres (wooded); Day (717) 426-4066 ext. 12 Evening (717)367-8519 Bedford Co. Historical Grist Mill; original equip.; renowned trout stream; 3 acres; 2 ponds; 4 stories; finished 3rd floor apart.; excellent B&B; retail shop; studio; built my Abraham Keagy. CALL (814)585-1784

PA farms & land for sale. 20+ tracts of land in 10+ counties in central & southern PA. Call John Mattilio, 717-464-8930 KENNETH H. GREIDER, REALTOR, 717-872-9002

11 acres; farmette; Ulrich Professionals Realty (717)273-9366

For Sale By Owner: 320+ ac in scenic historic Bedford Co, PA. Approx 75 acs tillable, rest pasture, woodland & mtn. Grt for beef cattle. Ideal for hunting w/mt stream & road frtg. 6 rm ranch house, 3br, 1bath, LR, DR, kit, w/breezeway & garage, 2 barns, stg bldg, mch shed, house bit 1955. (814)623-9779 after 1pm NORTH CENTRAL REALTY INC, business brokerage, commercial & agricultural real estate sales. 570-231-6630

4 Rent: 40 Cow Dairy Farm in Western Union Co. Avail. April 2004 (570)725-2009

94 A hunting/recreational property, located in small peaceful valley in Perry Co, PA, asking \$295,000 717-436-9793

Somerset Co. PA land, 71 acs, frontage on fishing creek w/views, mostly open rolling fields, approx 15 acs wooded, ex hunting, close to ski resorts, water activities & bike trails, \$3000/ac. Will divide into smaller parcels. (814)926-3270 after 6pm

110+ acres, beef & poultry farm. Lancaster Co., PA, near Manheim (717)665-3865

Quiet country home on 2 acs w/greenhouse operations, horse stable, shop, garage, pasture. Lancaster Co, PA. (717)721-6451

45 Ac, ex hunting land, all wooded. Somerset Co., PA. Close to summer & winter activities, \$67,500. (814)926-3270 after 6pm

92 Ac stone farmhouse, zoned residential. N'Hampton Co., PA Lots of frontage (610)845-2443

5 Ac of Camping Site, elec. & well water, 100's of Ac of hunting big farm fed bucks, we raise 'em you shoot 'em \$2,500 pr Ac. Cambria Co, PA (814)674-8756

**I buy land in Berks Co., PA 610-659-3111**

**We Buy Land - Call Greg @ 717-464-9060 ext 120**

**FOR RENT**  
100 acre Dairy Farm in Carlisle, PA Available-January, 2004  
75 Tillable acres, 7 acres of Pasture Large bank barn, 2 silos, 3 corncribs Farmhouse with 5 BR, 2 BA, Oil heat 34 tie stalls & 33 free stall barn, 50 cow feed bunk 2" SS pipeline with 1,500 gallon bulk tank Dry Cow/Heifer Barn and Calf Barn Drive thru feed room, 3 bay garage/shop  
For more information call: (215) 799-1454 between 6 & 9 p.m.

**Northumberland Co. (Broker Owned)**  
45 acres, additional 16 acres all wooded available, bank barn, 3 or 4 bdrm home, 2 car garage, spring water, 8 acres high tensile fenced pasture, 12 tillable, balance wooded, excellent hunting. \$259,000  
OR 10 ACRES, 3 or 4 bdrm home, 2 car garage, bank barn, spring water, 8 acres high tensile fenced pasture \$159,000  
**PETER B. CORTELYOU**  
Real Estate Herndon, PA 17830  
Peter B. Cortelyou, Broker  
570-425-9177 Fax 570-425-2305

**CENTRAL VIRGINIA**  
Farms and land available from 5 to 500 acres, reasonable prices, very low taxes, farmer friendly communities, agricultural economy.  
**State Wide Realty Co.**  
Farmville, Virginia  
**434/392-6163**  
www.vastatewiderealty.com

**Dairy Farm**  
141 Acres 100 tillable, 2 homes, 2x7 Herringbone, 2700 gal tank, bank barn, 138 free stalls, slurry store feed bin, 4 equipment storage buildings, 6 wire fence.  
Asking \$625,000 814/259-3256

Disclaimer Mileage listed for your convenience only, it is approximate, not to be relied on as exact Sorry for any inconvenience