

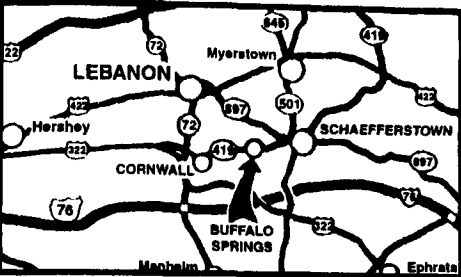
www.kbford.com

Your Internet Connection

SPECIALIZING IN NEW & USED SUPER DUTY PICKUPS

KELLER BROS.

(Buffalo Springs) Lebanon, PA
717-949-2000 or 1-800-363-2767
LEBANON COUNTY'S HEAVY DUTY TRUCK HQTRS.



FAMILY OWNED AND OPERATED FOR OVER 80 YEARS

Over 100 Clean Pre-Owned Vehicles In Stock At All Times!!

2001 MERCURY GRAND MARQUIS GS V8, AT, A/C, PW, PL, P. Seat, CD Player, Very Clean \$14,755



2000 FORD F-150 Super Cab, 4x4, Flare Sides, Local, One Owner, Very Clean, 67,000 Orig. Miles \$19,875



2002 FORD RANGER SUPERCAB XLT, Off Road Pkg., 4x4, AT, A/C, PW, PL \$17,345



2000 FORD F250 CREW CAB XLT Long Box, 1-Owner, AT, A/C, PW, PL, 35,200 Miles \$21,995



2001 FORD ESCAPE XLS 4x4 6 Cyl., AT, A/C, PW, PL, MoonRoof \$15,570



2003 FORD EXPEDITION XLT 4x4 5.4 V8, AT, A/C, PW, PL, T, C, CD, Cass, 3rd Seat \$28,794



2000 FORD F250 SUPERCAB XLT 4x4 V8, AT, A/C, PW, PL, 28,000 Miles Only \$23,995



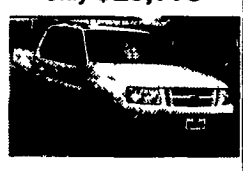
1998 FORD E350 CLUB WAGON 15-Pass., 5.5 V-8, AT, Dual A/C, PW, PL, \$13,995



2001 FORD F250 SUPER CAB 4x4 7.3 Turbo Diesel, AT, A/C, PW, PL, 1-Owner \$25,375



2001 FORD SPORT TRAC 4x4 4.0L AT, A/C, PW, PL, Alloy Wheels, Sharp Only \$20,773



2002 CHEV SILVERADO V8, AT, A/C, PW, PL, CD Player, 1 Owner \$22,554



1998 CHEV SILVERADO 1500 EXT. CAB 4X4 V8, AT, A/C, PW, PL \$13,255



2002 FORD F350 XLT CREW CAB DUALY 7.3 Powerstroke Diesel, 6-Spd., A/C, PW, PL, only 9,800 miles \$34,975



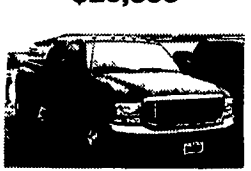
2001 FORD F-350 XLT SUPER CAB DUALY 7.3 Turbo Diesel, 6-Spd., A/C, PW, PL, 1-Owner, Local Trade \$30,975



2001 FORD F350 XL Dump Truck 5.4 V8, 5-Spd., AM/FM/Stereo Only 7,000 Miles. Ready to Work \$25,900



2000 FORD F350 CREW CAB XLT 4X4 7.3 Turbo Diesel, AT, A/C, Long Bed, 1-Owner \$26,595



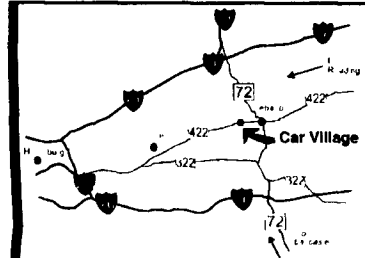
Nicest Trucks In the East • Nicest Trucks In the East • Nicest Trucks In the East • Nicest Trucks In the East • Nicest Trucks In the East • Nicest Trucks In the East

www.useddieseltruck.com

2300 W. CUMBERLAND ST. (Rt. 422) LEBANON, PA 17042 (Across From Lebanon Valley Mall)

CAR VILLAGE

1-800-650-1420
717-274-2000



DARK GREEN 2002 CHEVY 2500 HD SUPER CAB 4x4 Only 17,000 Miles Duramax Diesel, Allison Auto, A/C, Tow Pkg., 8 1/2 foot Bed, Chevy New Tk. Warranty



CUMMINS DIESEL 2001 DODGE 2500 4x4 Very Nice Heavy Duty 3/4 Ton, Only 25,900 Miles, 24 Valve Cummins Diesel, AT, A/C, 3.55 Gear Means Great Fuel Mileage



550 HAULER 2000 FORD SUPER DUTY CREW CAB The Ultimate Tow Machine Heavy 17,500 GVW Powerstroke Turbo Diesel, 6 Sp., A/C, Loaded XLT, Captain Chairs Only 7,000 Miles



DURAMAX SHORTBED 2002 CHEVY 2500 HD SUPER CAB 4x4 A Nice Driving Truck Smooth Quiet Plenty of Power Tow Pkg & All the Options



POWERSTROKE AUTO 2003 FORD F350 CREW CAB DUALY 4X4 They don't come any nicer, only 16,000 miles, 7.3 Powerstroke Diesel, Auto, A/C, Loaded XLT, Alloy Wheels, Gorgeous Two Tone



CHEVY 4 DOOR SHORTBED 2002 CHEVY 2500 4X4 The Awesome Duramax Diesel & Allison Trans. Loaded LT Package, Capt Chairs, Console, Alloy Wheels



5 SP. POWERSTROKE 96 FORD F250 SUPER CAB 4X4 Very Nice, Drives & Runs excellent, Lock Out Hubs, Loaded, XLT, Aluminum Wheels



IT'S A HEMI! 2003 DODGE 2500 4X4 DUALY Only 3,000 Miles, Like Brand New Hemi Powered and Sharp Enough to Do Some Serious Towing



CREW CAB DURAMAX 2001 GMC 2500 4x4 Very Strong Running Truck, Pulls Great Room for the Family Remaining New Tk Warranty



6 SPD DUALY 2000 FORD F350 SUPER CAB 4x4 Great Tow Machine, Power Stroke Turbo Diesel, 6 Spd., Loaded, XLT Aluminum Wheels, Tow Pkg., Only 49,000 Miles



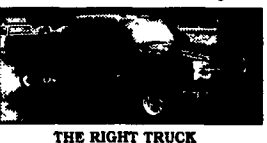
6.0 POWERSTROKE 2003 FORD F250 4 DOOR 4X4 Like New Only 3,000 Miles, Auto, Loaded XLT, Capt Chairs, Console, Alloy Wheels. This One Has It All



\$8,900 96 DODGE 1500 CLUB CAB 4x4 Runs Well, Drives Nice 318 V8 Auto, A/C, Tow Pkg



DON'T BUY NEW LOOK AT THIS 2003 DODGE 2500 HEAVY DUTY CREW CAB Only 1,000 Miles, 24 Valve Cummins Turbo Diesel, Auto, Loaded Laramie SLT Was \$34,900, Now \$32,000



THE RIGHT TRUCK 2003 CHEVY 2500 HD SUPER CAB 4x4 Only 14,000 Miles Duramax Turbo Diesel, Allison Auto, Loaded LS Pkg Very Nice, Very Strong



NICEST 92 ANYWHERE 92 FORD F250 SUPER CAB 4X4 Local Trade 7.3 Diesel, Auto, A/C, Tow Pkg, Excellent Body & Paint



6 SPD CREW CAB 4X4 99 FORD F350 XLT LARIAT Beautiful Tk., Powerstroke Turbo Diesel, 6 Spd., A/C, Leather Seats, All Pwr Equipment, Alum Wheels, 63,000 Actual Miles



2 WHEEL DRIVE 2000 FORD F350 SUPER CAB DUALY Giant Tow Machine, Only 57,000 Miles, Powerstroke Turbo Diesel, 6 Spd., XLT Pkg., Nice Clean Truck Only \$22,900



SHORTBED 4 DOOR 2003 FORD F250 4 WHEEL DRIVE Extra Nice, Only 23,000 Miles 7.3 Powerstroke, Auto, Loaded XLT Duraliner, Ford Warranty

FLATBEDS, WORK & DUMP TRUCKS



4 DOOR MECHANICS TRUCK 2000 FORD F350 4x4 Only 48,000 Miles, Powerstroke Turbo Diesel Auto Loaded XLT, Royal Truck Body Open Top Lids



EBY BODY 2001 FORD F350 CREW CAB 4X4 V10 Gas, Auto, A/C, 8 1/2 Aluminum Body, Swing Open Rear Gates, Tool Boxes



HD 3500 CHASSIS 98 CHEVY 15,000 GVW 454 Auto 48,000 Miles, 84" C A



WAITING FOR YOUR BODY 2001 FORD F350 4 DOOR CHASSIS 4 Wheel Drive, 7.3 Powerstroke, Turbo Diesel, AT, A/C Only 19,000 Miles, Remaining New Ford Warranty



\$19,900 99 DODGE 2500 QUAD CAB 4X4 Very Strong 24 Valve Cummins Turbo Diesel Auto A/C 8 Foot Bed Duraliner Tow Pkg



550 DUMP 2002 FORD 4X4 SUPER DUTY A Rare Find, Only 15,800 Miles, 7.3 Powerstroke Turbo Diesel, 6 Sp., A/C, Heavy 17,500 GVW 3 Yard Dump



4x4 UTILITY 1982 CHEVY. Runs great, 80,000 original miles 350 V8, Auto, 9 ft Reading Box, Ladder Racks, \$7,900



FARMERS FRIENDS 88 DODGE Only 60,000 Miles, 360 V8 Auto, 3yd Dump, Runs Well, \$7,900



NO CDL 2000 FORD 650 SUPER CAB DUMP No CDL License Required, 28,000 GVW, Only 22,000 Miles, Cat Diesel, Allison Auto, A/C, Heli Dump Body



4x4 SUPER CAB FLATBED 99 DODGE 3500 A Rare Find Cummins Turbo Diesel Auto A/C 12 ft Bed, Tow Pkg



TRACTOR - CAR HAULER 2001 CHEVY 3500 SUPER CAB Only 13,000 Miles, #100 Vortec 6 Sp Manual Trans., Ramps, Electric Winch



GRAIN BODY DUMP 2000 FORD F350 4x4 Only 39,000 Miles, 7.3 Powerstroke, Turbo Diesel, AT, A/C, Tow Pkg., Swing Open Rear Doors



\$13,900 350 FLATBED SINGLE WHEEL 2000 FORD 350 5.4 Triton V8 Auto, A/C, Vinyl Floor & Seat, 8 1/2 Ft Aluminum Bed, Fold Down Sides, Handy Truck Around The Farm



2002 CHEVY VAN 11 Foot Fiberglass Body, 1 Piece Rear Lift Door, Only 39,000 Miles Heavy 9500 GVW Only \$19,900



GOOSENECK HAULER 2001 DODGE 3500 4x4 FLATBED High Output Cummins 6 Spd., A/C, 10 1/2 Aluminum Bed, Gooseneck + Class 3 Hitches

Nicest Trucks In the East • Nicest Trucks In the East • Nicest Trucks In the East • Nicest Trucks In the East • Nicest Trucks In the East • Nicest Trucks In the East