

Case Loader, Good Condition . . . . \$4,000  
 3 Axle Gen. Tag Along Trailer . . . . . \$2,000  
 11 KW Generator . \$1,500  
**Call 610/252-7292**

**J D EQUIPMENT**  
 Pennsburg, PA 18073 • 215-679-5958  
**New Thomas Skid Steer Loaders**  
 IH reaper, wheel driven . . . . . \$250  
**Special: Thomas 255,**  
 2 speed . . . . . \$1,000/CASH BACK  
 New Thomas Mini-Skid Steers . . \$7,995  
 (3) Wheel Loaders . . . . \$3,800 to \$6,500  
 Repairs • Sales • Service www.jdequip.com

Cat 955L, very good cond, new U/C SN# 85J11710, \$24,000, (908)475-8166  
 Snow Plow, Fisher 9' minute mount, ex cond, \$1975 (610)779-5824  
 Backhoe attachment, 3pt hitch, Kelly B15, excellent condition, \$5500, (610)972-4356

'86 JD track loader, gen purpose bucket, 3rd valve & line, good cond, \$25,000 (215)799-4092  
 AC HD6 Crawler Dozer serial # HD6-B173, make offer (570)584-2928, photo available  
 Trojan 4wh dr. loader; 3yd. bucket, 471 detroit dsl motor; good cond (814)667-2445

**RENT ME!**  
**508-40 JCB 8,000 Lb. Boon Lift, 40 Ft Extension, Excellent Rates. Will Deliver Reinholds Area**  
 Call Philip @ **717/629-4896 or 717/484-2233**

**Celebrating Our 20th Year 1983-2003**

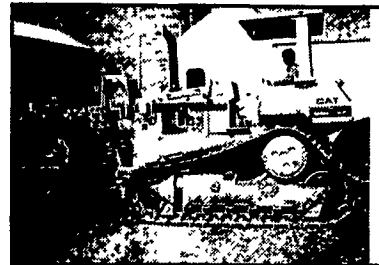
**JERRE MARTIN REPAIR**

391 N. Farmersville Rd., Ephrata, PA 17522

(Just minutes off RT 222)

**717-859-3283 Toll Free 877-317-5348**

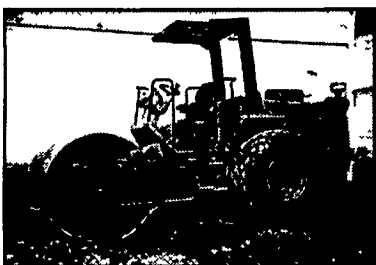
**Celebrating Our 20th Year 1983-2003**



'88 Cat D5H, 6-Way Blade \$34,000



Flat Allis FL5 Crawler Loader, 4N1 Bkt., Rebuilt Eng. \$13,500



'97 Hamm 2420, 84" Drum Drive \$29,000



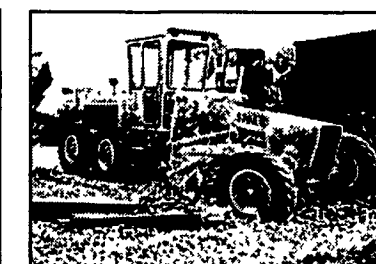
'93 Cat 320N Excavator, 8.5' Transport Width, Quick Coupler \$42,000



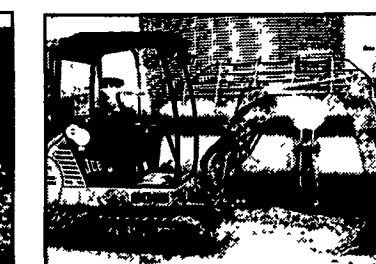
Komatsu D21S Crawler Loader (Late Model) \$13,000



IR SD100D Roller \$32,000



JD 570A, Excellent \$16,200



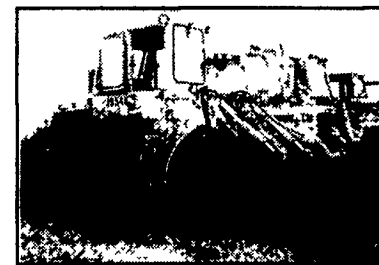
'99 JCB 8015 mini-excavator, like new \$11,500



MF 165 Multi-Power w/Loader \$55,000



'82 Cat 943 Crawler/Loader, Rebuilt Eng., New Undercarriage \$25,000



JD 544 Loader \$12,500



'94 Lull 1044, 42' Reach, 10,000 lb. w/Out Rigger \$25,000



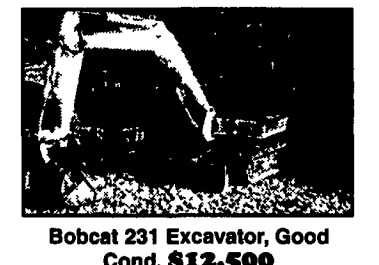
Lull 1044, 10,000 Lb., 42Ft. w/Outriggers, JD Dsl. \$23,500



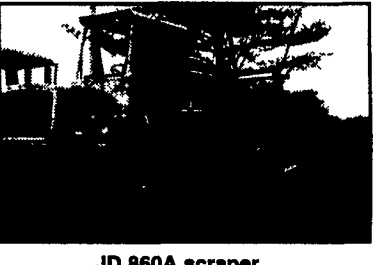
'94 Lull 844B, 8000 lb., 36' Reach \$22,000



'97 Cat 963B, New UC, New Paint \$75,000



Bobcat 231 Excavator, Good Cond. \$12,500



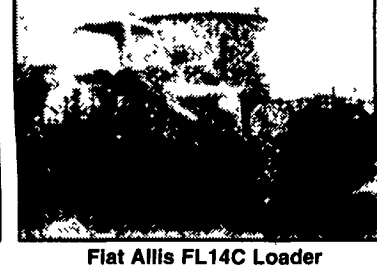
JD 860A scraper \$11,500



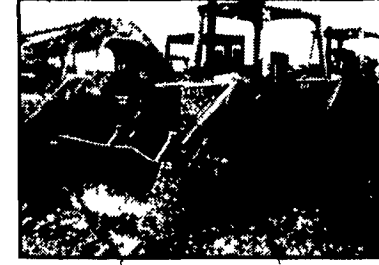
Lull 644, Perkins dsl \$15,750



'97 Traverslift 6035 w/JD dsl \$23,000



Flat Allis FL14C Loader \$13,500



99 JD 455G \$28,000



'98 Samsung SE130 \$32,000



Bobcat 325 \$12,500



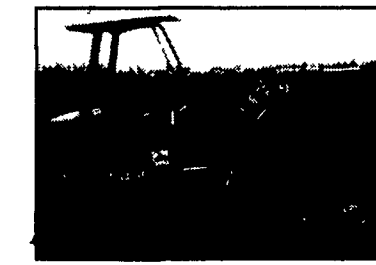
'99 Kobelco SK150 LC Series IV \$51,000



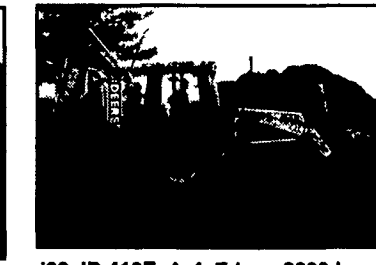
Takeuchi TB035 excavator, good cond. \$13,500



Takeuchi TB025 \$12,500



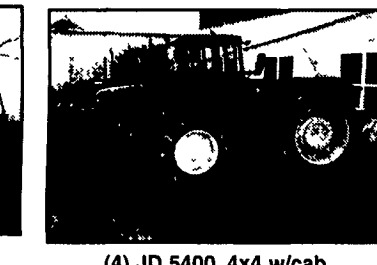
JD 15 mini excavator \$5,500



'98 JD 410E, 4x4, E-hoe, 2600 hrs \$32,000



JD 410B loader backhoe, 2wd, extend-a-hoe \$13,000



(4) JD 5400, 4x4 w/cab CALL

**• Sales • Service • Rental Repairs**

'99 Cat 226 skid loader . . . . . \$15,000  
 '97 Hamm 2420 roller, 84" drum drive . . . . . \$29,000

**WE ARE BUYERS FOR LATE MODEL CONSTRUCTION EQUIPMENT NEEDING REPAIRS**

**Road Service Available Now, Custom Repairs On All Makes Construction Equipment**