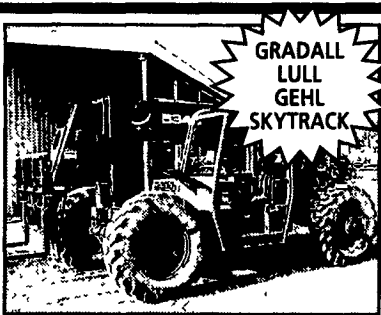




**JLG & GENIE**

**Boom Lifts**

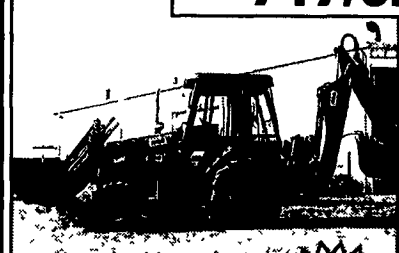


**GRADALL  
LULL  
GEHL  
SKYTRACK**

**Reach Forklifts**

**Rentals, New & Used Sales**

**717/629-6194**



**1999 Case 580L  
4x4, Cab, X-Hoe,  
1950 Hrs.**

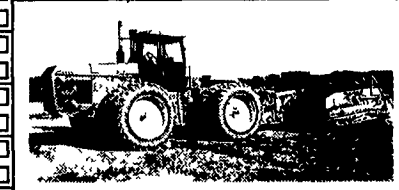
**JD 310  
Also  
Available**



**Bobcat Skid Loaders**

**FULL LINE OF  
ATTACHMENTS**

**753  
763  
773  
863**



**JD 8870, PS Duals, 350 HP, with 99  
Reynolds 17 Yd Pan \$70,000**



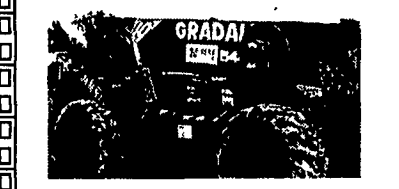
**Bomag BW210 84' Vibratory  
Roller \$16,000**



**JD 670 Grader, Scarifier 12 Blade, Exc  
Cond \$18,000**



**99 Vermeer Mdl. V-3550A, Trencher,  
4x4, Diesel, Backfill Blade,  
Only 575 Hrs \$11,500**



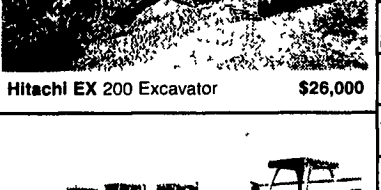
**94 Gradall 544 Forklift, 10,000 lb  
Capacity, 48' Reach w/Forks, Bucket, Truss  
Boom \$33,000**



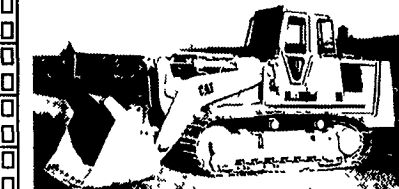
**Hitachi EX 200 Excavator \$26,000**



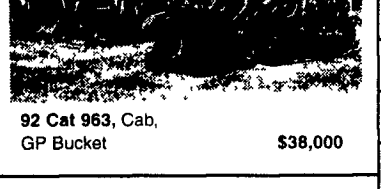
**88 Kenworth T600 \$10,000**



**92 Cat 963, Cab,  
GP Bucket \$38,000**



**89 CAT 973 GD UC, CAB 4-in-1  
Bucket, \$42,000  
18' Tandem Axle Tilt Bed Tag-Along  
Air Brakes \$3,500**



**86 Cat D5H, Good Undercarriage,  
Tight Blade \$39,000  
92 Cat D5H XL, Cab  
6-Way Blade \$42,500**



**Cat E120B Excavator \$23,000**

**73 Mack U600, Dump Bed Good Rubber \$5,000**

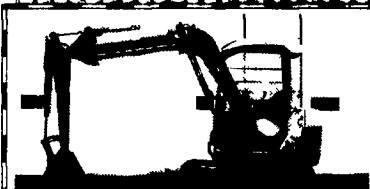
**JD 450E Dozer, 6-Way \$17,500**

**PAVING EQUIPMENT**

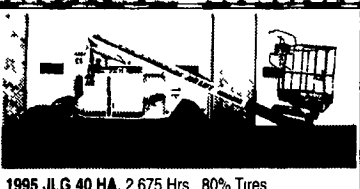
**Hyster 350C Roller \$5,000**

**Stone Wolfpack 2500 double drum  
asphalt roller \$2,500**

**Weaver's Equipment Sales**  
RD#1, Box 418, Milton, Pa. 17847  
Phone: 570/523-9598



**96 Komatsu PC50UU-2E, 3 740 Hrs  
Steel Tracks w/Blade \$14,500  
96 Komatsu PC50UU-2E, Canopy 3 350 Hrs Road  
Liner Shoes w/Blade \$14,500  
96 Komatsu PC50UU-2E, Canopy 3 665 Hrs Road  
Liner Shoes w/Blade \$14,500  
96 Komatsu PC50UU-2E, Canopy 3 912 Hrs Road  
Liner Shoes w/Blade \$14,500  
93 Komatsu PC50UU, 3 890 Hrs  
Rubber Tracks w/Blade \$11,000**



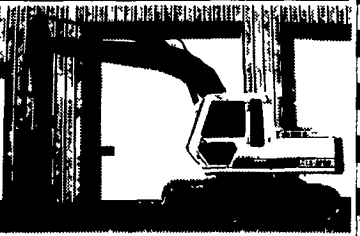
**1995 JLG 40 HA, 2 675 Hrs 80% Tires  
4x4 40 ft Reach \$12,500  
97 Hario H300B, Forklift 830 Hrs 4000# Lift 21  
Mast \$13,500**



**99 Cat D3C XL III, Hystat ROP 4 075 Hrs 60% UC \$34,000**

**NEW ADDITIONS**

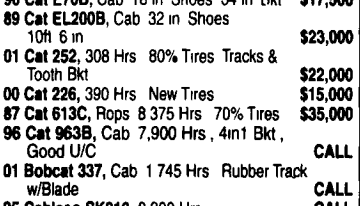
**95 Cat 312, Cab A/C 5 015 Hrs 30 in Shoes 9ft 2  
in \$33,000  
94 Cat 312, Cab A/C 3 065 Hrs 20 in Shoes 36  
in Bkt \$27,000  
92 Cat E120B, Cab A/C 3 710 Hrs 20 in Shoes  
36 in Bkt \$21,500  
90 Cat E70B, Cab 18 in Shoes 34 in Bkt  
\$17,500  
89 Cat EL200B, Cab 32 in Shoes  
10ft 6 in \$23,000  
01 Cat 252, 308 Hrs 80% Tires Tracks &  
Tooth Bkt \$22,000  
00 Cat 226, 390 Hrs New Tires \$15,000  
87 Cat 613C, Rops 8 375 Hrs 70% Tires \$35,000  
96 Cat 963B, Cab 7 900 Hrs, 4in1 Bkt,  
Good U/C  
01 Bobcat 337, Cab 1 745 Hrs Rubber Track  
w/Blade  
95 Cableco SK210, 8 900 Hrs  
94 Case 1845C, 2 970 Hrs  
96 NH LX 485, 2 180 Hrs, 50% Tires \$8,900**



**94 Linkbelt LS 2700C-2, 3 850 Hrs  
Manual Quick Copler Good Cond \$33,000  
80 Link Belt LS3400, Joy Stick Controls  
10'4" W, 53 000 lb \$12,500**



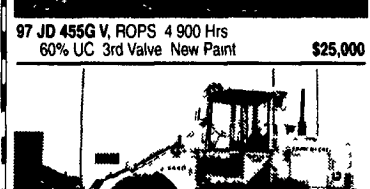
**97 JD 455G V, ROPS 4 900 Hrs  
60% UC 3rd Valve New Paint \$25,000**



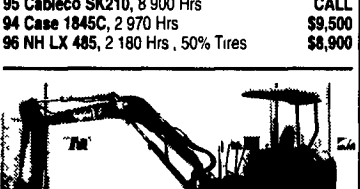
**97 Komatsu PC40R-8, Canopy 3 970 Hrs,  
Rubber Tracks 6-Way Blade \$17,000  
98 Komatsu PC40R-8, 3 930 Hrs  
Steel Tracks w/Blade \$16,000  
98 Komatsu PC40R-8, 2 523 Hrs  
Steel Tracks w/Blade, Plumbed \$16,000  
97 Komatsu PC40R-8, 3 320 Hrs,  
Rubber Tracks w/Blade \$15,000  
98 Komatsu PC40MR-1, 3 790 Hrs  
Steel Tracks w/Blade, New Paint \$18,000  
93 Komatsu PC40-7, 4 285 Hrs,  
Rubber Tracks w/Blade \$13,000  
92 Komatsu PC40-7, 4 420 Hrs,  
Rubber Tracks w/Blade \$13,000  
91 Komatsu PC40-7, Canopy 4 170 Hrs Rubber  
Tracks w/Blade \$13,000  
91 Komatsu PC40-7, Canopy 5 230 Hrs Rubber  
Tracks w/Blade \$12,000**



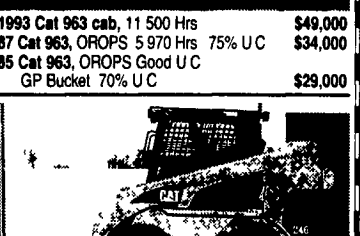
**1993 Cat 963 cab, 11 500 Hrs \$49,000  
87 Cat 963, OROPS 5 970 Hrs 75% UC \$34,000  
85 Cat 963, OROPS Good U/C  
GP Bucket 70% U/C \$29,000**



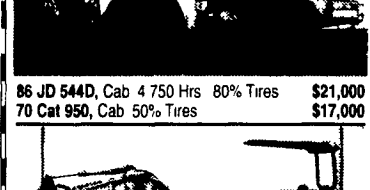
**86 JD 544D, Cab 4 750 Hrs 80% Tires \$21,000  
70 Cat 950, Cab 50% Tires \$17,000**



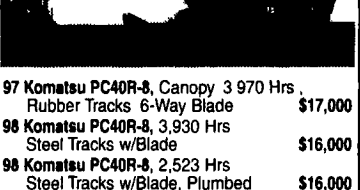
**97 Komatsu PC40R-8, Canopy 3 970 Hrs,  
Rubber Tracks 6-Way Blade \$17,000  
98 Komatsu PC40R-8, 3 930 Hrs  
Steel Tracks w/Blade \$16,000  
98 Komatsu PC40R-8, 2 523 Hrs  
Steel Tracks w/Blade, Plumbed \$16,000  
97 Komatsu PC40R-8, 3 320 Hrs,  
Rubber Tracks w/Blade \$15,000  
98 Komatsu PC40MR-1, 3 790 Hrs  
Steel Tracks w/Blade, New Paint \$18,000  
93 Komatsu PC40-7, 4 285 Hrs,  
Rubber Tracks w/Blade \$13,000  
92 Komatsu PC40-7, 4 420 Hrs,  
Rubber Tracks w/Blade \$13,000  
91 Komatsu PC40-7, Canopy 4 170 Hrs Rubber  
Tracks w/Blade \$13,000  
91 Komatsu PC40-7, Canopy 5 230 Hrs Rubber  
Tracks w/Blade \$12,000**



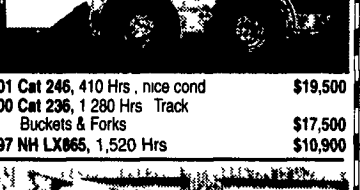
**01 Cat 246, 410 Hrs, nice cond \$19,500  
00 Cat 236, 1 280 Hrs Track  
Buckets & Forks \$17,500  
97 NH LX665, 1 520 Hrs \$10,900**



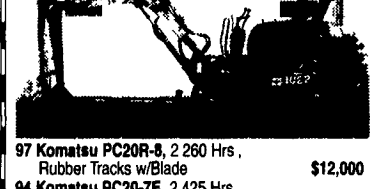
**97 Komatsu PC20R-8, 2 280 Hrs,  
Rubber Tracks w/Blade \$12,000  
94 Komatsu PC20-7E, 2 425 Hrs  
Rubber Tracks w/Blade \$10,000  
96 Komatsu PC207-E, Canopy  
2 644 Hrs Rubber Tracks w/Blade \$10,500  
91 Komatsu PC25, Canopy 4 900 Hrs  
Rubber Tracks w/Blade \$10,000  
94 Komatsu PC20-7, Canopy  
2 830 Hrs, Rubber Tracks w/Blades \$9,500  
97 Komatsu PC30R-8, 1 800 Hrs Steel Tracks  
w/Blade \$13,500**



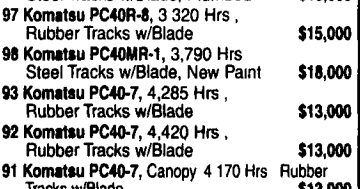
**95 JD 590D, 5 530 Hrs New Paint Plumbed \$36,000  
94 Hitachi EX 120-3 Cab, 4 630 Hrs 20 in  
Shoes \$28,000**



**03 Komatsu PC200-7, New and Unused  
AC 32 Shoes 40 Bucket \$99,500**



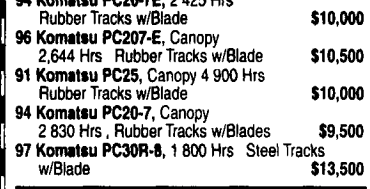
**99 Takeuchi TBO14, ROPS 1 275 Hrs  
Rubber Tracks Backfill Blade \$9,750**



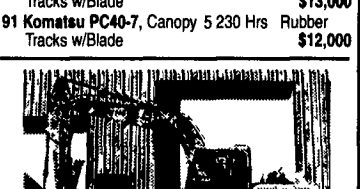
**00 Bomag BW202ADH-2 Tandem,  
Vibratory Smooth Drum Asphalt  
Roller 1 745 Hrs Water System \$26,000**



**83 Cat 615, Cab, 75% Tires,  
Self-Loading, Good Chains \$38,000**



**1997 Komatsu PC45R-8, 3 125 Hrs  
Roadliner Shoes Backfill Blade \$16,000  
97 Komatsu PC45R-8, 2 900 Hrs,  
Roadliner Shoes, Backfill Blade \$15,500  
94 Komatsu PC45-1, 3 195 Hrs  
Rubber Tracks w/Blades \$14,500  
92 Komatsu PC45-1, 3 740 Hrs Steel Tracks  
w/Rubber Pads Backfill Blade \$14,000  
91 Komatsu PC45-1, 1 630 Hrs Cab  
Rubber Tracks w/Blade \$16,500**



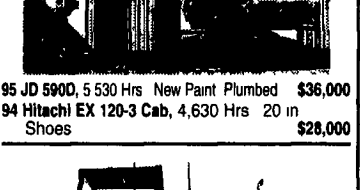
**98 Komatsu D41P-6LGP, 5 320 Hrs,  
75% U/C, 6 Way Blade \$33,000  
86 Fiat Allis FDS, OROPS, 5 000 Hrs,  
6-Way Blade \$15,500  
87 Fiat Allis FDS, Canopy, 60% U/C \$13,500**



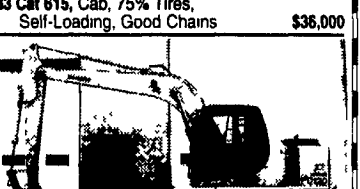
**99 Komatsu PC120-6 Cab, AC,  
3 170 Hrs 20' Shoes \$49,500**



**00 ASV Positrack 4810, 340 Hrs 90% U/C \$29,500  
99 ASV Posi Track MD 2810, 860 Hrs \$21,000  
99 ASV Positrack, MD 2800 CALL  
98 ASV Posi Track MD 2810, 1 280 Hrs 4 in 1 Bkt \$19,000  
00 ASV Positrack 4810, 370 Hrs 90% U/C \$27,500  
01 ASV Positrack 4810, 1 060 Hrs \$26,000**



**95 Hitachi EX60-3, Cab, 3 445 Hrs,  
Steel Tracks, New Paint \$18,000**



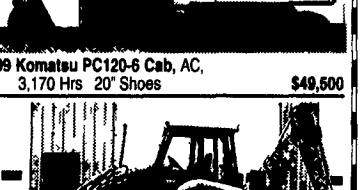
**99 JCB 214 Series III, Cab 2720 Hrs  
4x4 Extendahoe New Tires \$29,000  
96 Ford 75D, Cab 4 450 Hrs  
4x4 Extendahoe \$23,500**



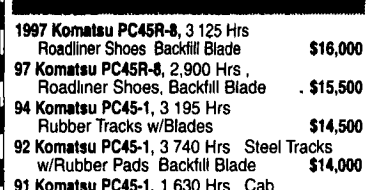
**2001 Super PAC 540 Canopy, 82 Hrs,  
54" Drum Drive \$23,000  
Bomag BW212D, 1 900 Hrs Canopy,  
84" Drum Drive \$29,000  
91 IR DD-22, 39" Double Drum Asphalt Roller \$7,500  
84 Ingersoll Rand SP56, ROPS, 7 280 Hrs, 84 in  
Drum 50% Tires \$16,000**



**96 Komatsu PC75UU-2E, Cab, A/C, 3 930 Hrs,  
Road Lner Shoes w/Blade \$19,500  
94 Komatsu PC75UU, 4 900 Hrs \$17,500  
93 Komatsu PC75UU, Canopy 3 600 Hrs Rubber  
Tracks w/Blade \$16,500  
94 Komatsu PC75UU, 4900 Hrs \$19,000  
93 Komatsu PC75UU, Canopy, 3600 Hrs  
Rubber Tracks w/Blade \$16,500**



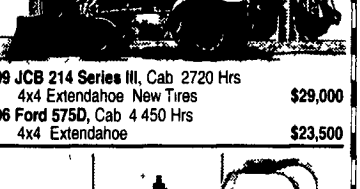
**79 Int'l 125E, 5 370 Hrs 75% U/C \$11,500  
74 Cat 931, Rops CALL**



**88 Cat 953, Cab 90% U/C \$39,500  
88 Cat 953, Cab 50% U/C New Paint \$38,000  
88 Cat 953, Canopy 75% U/C \$32,000  
88 Case 1155E, Canopy 5 787 Hrs 50% U/C \$17,500**



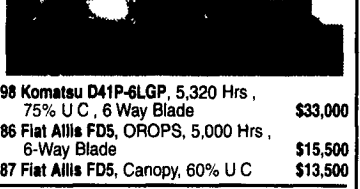
**Volvo 825B Articulated Truck, 6x6 \$38,000  
79 JD 850, OROPS Angle Blade \$17,000  
Komatsu 30 Forklift, 6 600 lb Lift Gas Eng \$7,000  
88 Ford F350 Dually, Mechanics Body Crane,  
Electric Lift Gate New Motor, New Tires \$6,900**



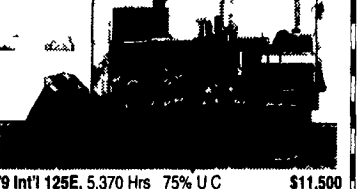
**89 Cat E120B, 5 200 Hrs, 3rd Valve  
W/Plumbing \$21,000**



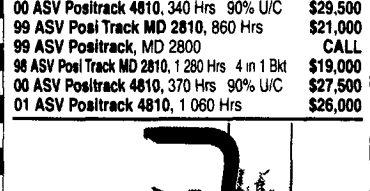
**88 Cat 953, Cab 90% U/C \$39,500  
88 Cat 953, Cab 50% U/C New Paint \$38,000  
88 Cat 953, Canopy 75% U/C \$32,000  
88 Case 1155E, Canopy 5 787 Hrs 50% U/C \$17,500**



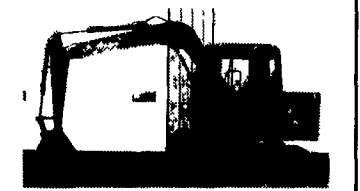
**96 Komatsu PC75UU-2E, Cab, A/C, 3 930 Hrs,  
Road Lner Shoes w/Blade \$19,500  
94 Komatsu PC75UU, 4 900 Hrs \$17,500  
93 Komatsu PC75UU, Canopy 3 600 Hrs Rubber  
Tracks w/Blade \$16,500  
94 Komatsu PC75UU, 4900 Hrs \$19,000  
93 Komatsu PC75UU, Canopy, 3600 Hrs  
Rubber Tracks w/Blade \$16,500**



**79 Int'l 125E, 5 370 Hrs 75% U/C \$11,500  
74 Cat 931, Rops CALL**



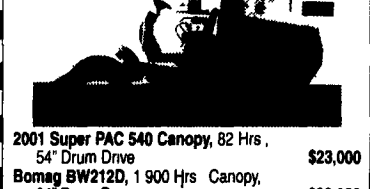
**2001 Super PAC 540 Canopy, 82 Hrs,  
54" Drum Drive \$23,000  
Bomag BW212D, 1 900 Hrs Canopy,  
84" Drum Drive \$29,000  
91 IR DD-22, 39" Double Drum Asphalt Roller \$7,500  
84 Ingersoll Rand SP56, ROPS, 7 280 Hrs, 84 in  
Drum 50% Tires \$16,000**



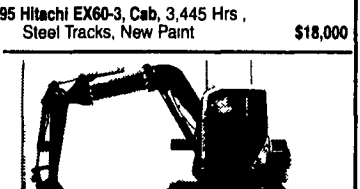
**96 Komatsu PC75UU-2E, Cab, A/C, 3 930 Hrs,  
Road Lner Shoes w/Blade \$19,500  
94 Komatsu PC75UU, 4 900 Hrs \$17,500  
93 Komatsu PC75UU, Canopy 3 600 Hrs Rubber  
Tracks w/Blade \$16,500  
94 Komatsu PC75UU, 4900 Hrs \$19,000  
93 Komatsu PC75UU, Canopy, 3600 Hrs  
Rubber Tracks w/Blade \$16,500**



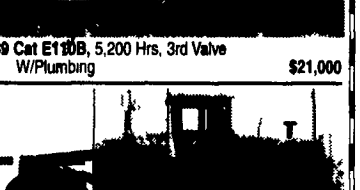
**89 Dresser A450E Motor Grader, Cab  
Scarifier 14' Moldboard \$19,500  
90 Champion 720A 6x6, 14' Moldboard Cab \$24,500  
78 JD 670 Motor Grader CALL  
72 JD 570A, Cab, 12ft Moldboard Front Scarifier  
50% Tires \$16,000**



**88 Cat 953, Cab 90% U/C \$39,500  
88 Cat 953, Cab 50% U/C New Paint \$38,000  
88 Cat 953, Canopy 75% U/C \$32,000  
88 Case 1155E, Canopy 5 787 Hrs 50% U/C \$17,500**



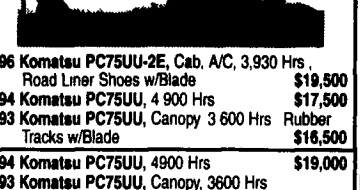
**96 Komatsu PC75UU-2E, Cab, A/C, 3 930 Hrs,  
Road Lner Shoes w/Blade \$19,500  
94 Komatsu PC75UU, 4 900 Hrs \$17,500  
93 Komatsu PC75UU, Canopy 3 600 Hrs Rubber  
Tracks w/Blade \$16,500  
94 Komatsu PC75UU, 4900 Hrs \$19,000  
93 Komatsu PC75UU, Canopy, 3600 Hrs  
Rubber Tracks w/Blade \$16,500**



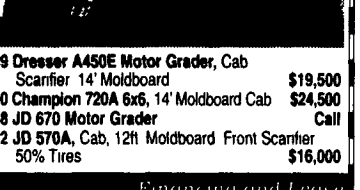
**89 Dresser A450E Motor Grader, Cab  
Scarifier 14' Moldboard \$19,500  
90 Champion 720A 6x6, 14' Moldboard Cab \$24,500  
78 JD 670 Motor Grader CALL  
72 JD 570A, Cab, 12ft Moldboard Front Scarifier  
50% Tires \$16,000**



**88 Cat 953, Cab 90% U/C \$39,500  
88 Cat 953, Cab 50% U/C New Paint \$38,000  
88 Cat 953, Canopy 75% U/C \$32,000  
88 Case 1155E, Canopy 5 787 Hrs 50% U/C \$17,500**



**96 Komatsu PC75UU-2E, Cab, A/C, 3 930 Hrs,  
Road Lner Shoes w/Blade \$19,500  
94 Komatsu PC75UU, 4 900 Hrs \$17,500  
93 Komatsu PC75UU, Canopy 3 600 Hrs Rubber  
Tracks w/Blade \$16,500  
94 Komatsu PC75UU, 4900 Hrs \$19,000  
93 Komatsu PC75UU, Canopy, 3600 Hrs  
Rubber Tracks w/Blade \$16,500**



**89 Dresser A450E Motor Grader, Cab  
Scarifier 14' Moldboard \$19,500  
90 Champion 720A 6x6, 14' Moldboard Cab \$24,500  
78 JD 670 Motor Grader CALL  
72 JD 570A, Cab, 12ft Moldboard Front Scarifier  
50% Tires \$16,000**

**Rentals Available  
Day, Week, or Month**

**Weaco Equipment**  
4009 Conrad Weiser Parkway, Womelsdorf, PA 19567  
Located 4 Miles East Of Myerstown on Rt. 422 sales@weacoequipment.com  
**610/589-5555 Toll Free 877/529-9328**

*Financing and Lease  
Purchase Available  
No Sunday Calls*