



WENGER'S OF MYERSTOWN

CONSTRUCTION EQUIPMENT & PARTS

800-552-5080 • Nights 717-272-9583

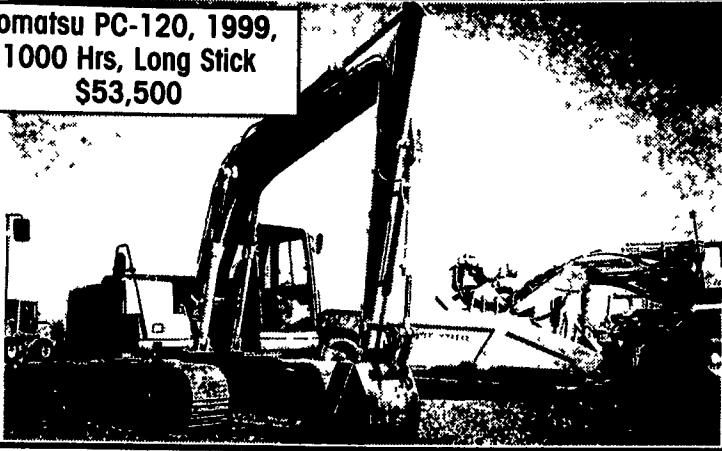
Rt 501 South Myerstown, PA 17067

HOURS Mon-Fri • 7:30-5:00 Saturday • 7:30-Noon

www.wengers.com

kbaum@wengers.com

**Komatsu PC-120, 1999,
1000 Hrs, Long Stick
\$53,500**



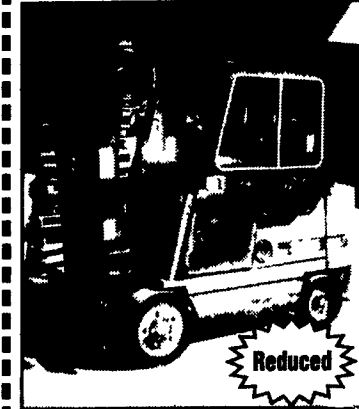
**Komatsu DS8P,
6 Way LGP
\$49,500**



CUSTOM WOOD GRINDING



80 to 300 yard per hour, 680 hp Cat
Brush, trees, mulch, pallets, Slabwood
demo and logs up to 30" diameter
Custom screening also available
Eliminator IV 6' x 23 Trommell screen
Please call for price quote (717) 738-1312

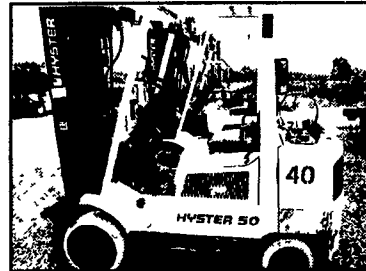


Clark GCX25 -
5,000 lb. capacity
- cushion tire -
mast 83/188
triple - LPG -
P/S - cab
with heat -
side shift -
mid 90's
ex. condition.

**C. Betz Fork
Lift Sales
717-485-0410**

LIFT-LINK

1-877-570-4751



1999 Hyster, S50XM, 5,000# Capacity, LP Gas,
Quad Mast (240" Lift), Sideshifter, Just off
Maintenance Lease, Excellent Condition **\$7,950**
SALES SERVICE RENTALS LEASING



**SALE
OR
RENT**

**Cat 941/951 CRL Loader
8 Crawler Loaders To Choose From**

Heavy Equipment Loader Parts, Inc.
10070 Allentown Blvd Grantville, PA 17028
No Sunday Calls (717) 469-0039



MIKE ZYNDORF LLC

609/625-8660

609/641-3342 (Evenings)

FAX 609/625-8664

6481 Harding Hwy (Rt. 40) Mays Landing, NJ 08330

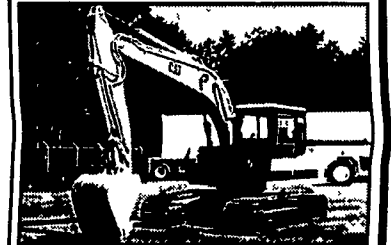
Visit us at www.mzequipment.com for our complete inventory



89 Cat D-4C-LGP, Dozer,
VG. Cond. Call for Info



90 Cat E110B, cab, 20 in pads, 36"
bucket, aux., hyd. \$25,500



90 Cat E120B Exc., 28" steel pads,
A/C, Aux. hyd. \$25,500



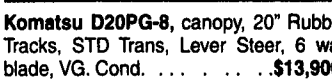
1987 Komatsu Dozer, Model D31P-17,
LPG model, 3 spd trans, good w/c . . .
\$18,500



96 JCB 506B, telescopic forklift,
6000lb. cap., 4x4, 36"
reach \$28,900



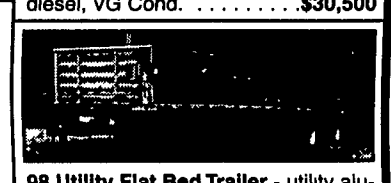
97 Lull 6K-37 - telescopic lift, JD
diesel, VG Cond. \$30,500



Komatsu D20PG-8, canopy, 20" Rubber
Tracks, STD Trans, Lever Steer, 6 way
blade, VG. Cond. \$13,900



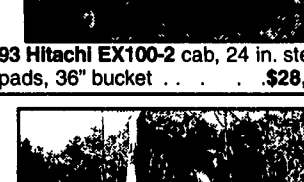
93 Hitachi EX100-2 cab, 24 in. steel
pads, 36" bucket \$28,900



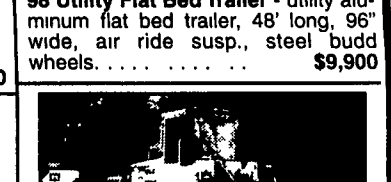
98 Utility Flat Bed Trailer - utility alu-
minum flat bed trailer, 48' long, 96"
wide, air ride susp., steel budd
wheels. \$9,900



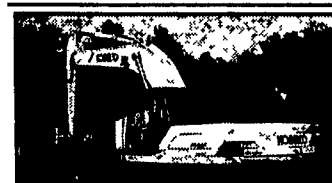
96 Master Craft, 6000lb. capacity, 21'
3 stage mast diesel . . . \$14,900



98 Case 9020B Exc., cab, 28" shoes, A/C,
vg cond \$52,500



98 Volvo L70C 20 5x25 tires, cab,
A/C, JRD coupler system . . \$45,500



98 Kobelco SK300LC, V/G cond.,
Low hrs Call for Info



'99 Case 75XT Skid steer, aux hyd
'98 JD 455G GP Bucket w/teeth, ps trans, w/c
'94 Hitachi EX55UR - rubber tracks, blade, 0 tail swing, canopy
'88 GMC Brigadier water truck, 2300 gal Smith tank, 5 spray heads
'94 Simon Manlift MP60, 60' reach, 4x4, diesel
'99 IHC 4700, dump truck, p/s, a/c cruise
(2)1997 Speciality Light Plants model BT K6-4MH, Kubota diesel, 4-1000
watt bulbs \$2,950 - \$3,250



(1)1994 Amida Light Plant model SL4060D-4MH, Kubota diesel, 4-1000 watt bulbs \$2,500
'96 Manitou Rough Terrain Straight Mast 4x4 5000 lb capacity, 21' 3 stage mast, Ford diesel
power \$16,900
'98 Ford F700 dump truck, diesel, no CDL needed \$21,500
PC50UU-1 - R tracks, blade, art boom, canopy \$13,900
Ditch Witch 255SX Trencher, cable plow, gas powered, 300 hours \$7,900

(2) B50-2 '93 & '94" equipped w/rubber
tracks, blade, canopy \$15,500
B27-2 R. tracks, blade &
cab, offset boom \$16,900
B37-2 R. tracks, blade &
canopy \$12,900

Dozer says...



THINK SNOW
Equipment!

Douglas EQUIPMENT & SUPPLY CO.

717/428-1517 Fax 717/428-2990

7100 Kreidler Rd. York, PA 17403
Interstate 83 • Exit 10 (Old Exit 3)



NEW Snow Equipment is here and ready to go!!

RUBBER TIRE LOADERS



• JD 544E, EROPS • JD 544C, EROPS

TRUCKS



• 1991 Chevy C3500 9' Utility, 6.5 Dsl, Auto,
AM/FM, Cruise, 11,000 GVW \$6,500
• 1988 Int Tandem Axle Dump, 13'6" Alum Bed, Jake
Brake, Cummins Dsl, 9 Spd Fuller Trans, Central
Hyd., Set Up To Tow Tag-Along Trl . \$17,500

GRADERS



• Huber M600 Maintainer w/center blade, front
blade, wide rear tires, gas engine Call

MOWING & UTILITY TRACTORS

• Ford 540A OROPS, Canopy, 3 Pt PTO,
RH Side Flail \$8,500
• (2) Ford 5610, 3 Pt., PTO (1) W/RH Flail Mower

• (12) Case IH 585, 3 Pt.,
PTO, Canopy, 1
w/CAH, Full Hyd.,
Triumph Sickle
Mowers, Dual
Rear Outlets
(Pictured at left)

LIGHT TOWERS

• (1) Almand Dsl, 4 light heads,
tow behind Call

• Case IH 685, 3 Pt PTO, Twin Sickle Mower
• Case IH 685, OROPS, Canopy, 3 Pt., PTO, Left &
Right Hand Sickle Mowers
• Case IH 885, CAH, 3 Pt., PTO, Rear Outlets

TRAILERS



• 2004 Towmaster T10T Tilt, 13,300 GVWR,
16' Deck, E-Z Lube Axle, Torflex Suspension
• 2004 Conrail C10, 16' Deck, Ladder Ramps,
12,600 GVWR

GRADALLS & EXCAVATORS



• Gradall 660E, Cummins Engine Up & Down
(1) (3) Gradall G 660C's, Mobile Excavator,
Detroits, Remotes
• Gradall G3WD, Needs Work
• 2001 JD 35ZTS Mini Excavator, OROPS,
Aux Hyd., 20" Bucket, Rubber Tracks
• 2000 JD 35ZTS, EROPS, Aux Hyd., Heat,
30" Bucket, Rubber Tracks

FORKLIFTS

• JD 380, Diesel, Side Shift

MISCELLANEOUS

• Used 3 Pt Flail & Rotary
Mowers \$750 and Up
• 8' Hyd Broom Attachment for Cat IT 18 or 28

SKID LOADERS

• 2000 JD 280, Aux Hyd., 2 Speed, Weight Kit

BACKHOES

• 1998 Case 580L Series II Turbo, Cab, 4x4,
E-Stock, 2 Lever Controls
• JD 310E, Cab, 4x4, Standard Hoe, New Tires
• Ford 675E, Cab, 4x4, Extend-a-hoe,
Pwr. Shift Coming In

In Stock - EZ Dump Insert For Pickups - Starting At \$1,600

Authorized Dealer For:



Trailer Parts

**Securall Cargo
Tie Down Straps**

Gasboy Fuel Transfer Pumps & Tanks



Tie Down Chains, Load
Binders, & Tire Chains



Warning Lights



Plows & Spreaders



Hitches & Truck Equip.
and Snow Equip.



Hitches & Truck Equip.
and Snow Equip.



Plows & Spreaders



South Jersey New Full Line Eager Beaver Dealer

New rubber tracks available
for most excavators
Delivery



Financing