

**PUBLIC AUCTION  
OF MF LOADER &  
FORD TRACTORS, TOOLS &  
COLLECTABLES ON  
SAT., NOV. 15, 2003**

Located at 276 Machmer Rd. Turn N. off Rt. 562 2-1/2 mi. E. of Yellow House (Rt. 662), or 4 mi. W. of Boyertown (Rt. 73), onto Machmer Road for 2 mi. Amity Twp., Berks Co. PA  
MF 202 Ind. gas w/loader & Ford 600 gas tractors; 42' storage trailer; Woods 3 pt. 5' rotary mower; MF plow; 3 pt. 6' scraper; 2 wheel trailer; dbl. drill press; 6" jnters; Rigid pipe/wise cleaner; 65 drawer cabinet w/hardware; anvil; tool chest; hand & mechanic tools; S/S 2' x 3' x 2-1/2" & plastic 2' x 3' X 8" trays; pig troughs; platform scale; 4' wire shear; rolls of 1/2" & 1" welded wire; angle racks; scrap.  
Green Valley & other wdn. milk crates; wdn. & adv. boxes; milk bottles; crocks & jugs; Jordon 2 glass dr. alum. ref.; Coke vending machine; butcher block work table; Globe porcelain meat slicer & many more items.  
1985 Dodge Royal SE D-250 8 passenger van, AT, 140K miles, not inspected.  
Terms: Cash or PA Check Refreshments on Premises Sale at 9:00 P.M. Sold for Arlan Stetzler  
**FREY AUCTIONEERS**  
610-689-5269 AU-000302-L

**SHORT NOTICE  
PUBLIC AUCTION  
CUSTOM 1-1/2 STY. 5 BDRM DWL  
2 CAR GARAGE  
3 BAY 30'X50' SHOP/GARAGE  
2-1/2 ACRE TRACT  
WED., NOV. 26 2 P.M.**



Location: 589 Springville Rd. (Rt. 897), New Holland, Salisbury Twp. Take Rt. 322 East of Blue Ball. Turn right Rt. 897 South approx. 3 miles to property on left.  
1-1/2 sty Cape Cod style house with 2,612 SF plus 780 SF in lower level. Eat-in kitchen, dining rm., living rm., 1st floor master bdrm. w/walk-in closet & bath w/whirlpool, 1st floor laundry & 1/2 bath 2 additional bdrms & bath on 1st floor & 2 bdrms & bath on 2nd floor Large family rm., oil forced air heat & central AC, central vac, garage/shop 30'x50', 3 large bays w/12'x12' overhead doors & 10'x20' office, 2.5 acres partially wooded fenced pasture, w/stream.  
Note: This is truly "one-of-a-kind" property. "Property must be sold." Inspection by appointment or open house Sat., Nov. 8, 15, 22 from 1 to 4 PM For color brochure, land plotting or financing call Auctioneers 717-733-1006.  
**SAM S. JR & MARTHA L. KING**  
717-354-5570

Randal V. Kline, Roy E. Good, Jr., Keith Snyder, Auctioneers  
717-733-1006  
Lic. #499 - #2116 - #3433  
**KLING, KREIDER & GOOD**  
AUCTIONEERS  
www.klinekreidergood.com

**Public Auction Register**  
Closing Date Monday 5:00 P.M.  
of each week's publication  
Internet Sale Register will be updated  
by Friday at 12 Noon  
**ATTENTION AUCTIONEERS**  
All sales register info needs complete address,  
street, town, county & state.

SAT. NOV. 8 - 8:30AM Consign. sale, antiques, furn, dishes, 78 records, misc. at Little Ike's Auct. House In., 150 Mount Top Rd., Dillsburg, PA, 717-432-0006.  
SAT. NOV. 8 - 8:30AM - Machine Shop Asset Auction, trucks, machinery, tow motors, etc., 420 S. Sherman St., York, PA, Snell's Auction Service, AU-3705-L, 717-246-6954.  
SAT. NOV. 8 - 8:30AM Tools, fishing items, 1974 Ford Thunderbird, misc. at 3320 Spondin Dr., Longtown, PA by Rentzler's Auct. Serv. AU761-L, 717-764-6412.  
SAT. NOV. 8 - 8:30AM Valuable Real estate auction, antiques, furniture, glassware, china, RCA memorabilia, etc. 327 Crestline Dr., Willow St., W. Lampeter Twp. Miller & Siegrist Auct. 717-687-6857.  
SAT. NOV. 8 - 8:30AM Christiana-Gap Fire Co. farm sale. 82 Upper Valley Rd., Christiana.  
SAT. NOV. 8 - 8:30AM Banquet & commercial kitchen equip/supplies at 585 McAllister St., Hanover, PA by Randy L. Hilker, AU002095-L.  
SAT. NOV. 8/15, 9AM Bldg. supplies, new furn., The Lumber Jack, 229 S. Bridge St., Elkton, MD, everything goes, by Wolgemuth Auct. #2357, 717-656-2947.  
SAT. NOV. 8 & TUES. NOV. 11 - 9AM & 1PM respectively, Real estate, Model "T", 2002 Chevy, guns, tools, antiques, collect. at 1267 Main St., Bowmansville, PA by Truex L. Jones Auct. AU3607-L, 610-286-7834.  
SAT. NOV. 8 - 9AM Farm equip., woodworking, shop tools, farm items, hh gds, wood craft, at 461 Manada Bottom Rd., Grantville, PA by Nelson Ebersole AU001307-L 717-867-5221.  
SAT. NOV. 8 - 9AM Personal property, antiques, furniture, 536 Cambridge Rd., Narvon. Randal V. Kline, Auct. 717-733-1006.  
SAT. NOV. 8 - 9AM Building supplies, tools, vehicles, restaurant & butcher equip., HH goods. 910 Codorus Furnace Rd., Mt. Wolfe. Horning Farm Agency, Inc. 610-286-5183.  
SAT. NOV. 8 - 9AM 3955 Mt. Pisgah Rd. York, PA. Trucks, Lumber, AU2797L. Kenneth Keeny. (717) 993-3448.  
SAT. NOV. 8 - 9AM General Bldg. Consignment Auction & Miscellaneous Equip.

Auction, 209 Oakhaven Rd., Fleetwood. Kutztown Produce Auction, Inc. 610-683-7161  
SAT NOV. 8 - 9AM Tools/shop equip consign auction at Miller's Auct. Ctr, Bethel, PA by Dwight Miller Auct AU2414-L, 717-933-5736.  
SAT NOV. 8 - 9AM 1000 Head heifer sale at New Holland Sales Stables, 717-354-4341.  
SAT. NOV. 8 - 9AM HH goods, antiques, real estate, furn at 2377 New Holland Pk, Lanc. Co., PA by Robert E. Martin AU0580L, 656-7770  
SAT. NOV. 8 - 9AM Real estate, antiques, HH goods, tools, cars, misc. at 965 Newport Rd., Penn Township, Lancaster Co. PA by Horst Auct. AU438L, 717-859-1331, 717-738-3080.  
SAT. NOV. 8 - 9AM JD 1530 & H tractors, mower, engines, hand/power tools, HH goods, at 9 Hess Ln., Longswamp Twp, Berks Co., PA by Frey Auct. AU300L, 610-689-5269.  
SAT. NOV. 8 - 9AM Tractor, hunting/trapping items, guns/tools, misc. at 44 Hair Rd., Newville, PA by Terry L. Shetter AU002951-L, Kelly Shetter AU003857-L, 717-264-3885.  
SAT. NOV. 8 - 9AM Public Auction, Surplus equip., the Howard County Public School System, Ridgeley Auction Co. For info: 410-313-6600.  
SAT. NOV. 8 - 9AM UTCA Area Contractors Auction, Wall Stadium, Wall Township, NJ. Milling machines, tractors, forklifts, etc. REH Auctions & Liquidations, 1-866-577-7347.

**Absolute Auction  
35 Acre Farm  
For Janet Rupp & the late Glenwood Rupp  
Sat. Nov. 29th, 2003  
at 10:00 AM**

Located: 255 Bethlehem Church Rd. Red Lion. Church Rt. 74 south of Red Lion Square, approx. 2 miles at Texaco Service Center T/R on Springvale Road, go a block T/L on Bethlehem Church Road. Farm on Left, signs posted. You can see farm from Rt. 74. York Co. PA  
Farm with 35 acres, approx. 22 tillable w/approx. 8 acres of woods balance around buildings and pasture, lots of road frontage. Typical 6 bedroom Farm House w/1 bath. Large Bank Barn in average condition, several other small outbuildings, approx. 3 acres on farm are zoned commercial that fronts on Rt. 74. Public water and sewer runs along Rt. 74, balance of 32 acies are zoned agriculture, commercial possible subdivision. Nice setting farm in a good location Windsor Twp. Red Lion Schools. Land lays nice. This farm will be sold to the highest bidder auction day. Seller disclosure available w/new survey at open house. Open Sat. Nov. 8, 15 & 22 from 10 to 2:00 PM. Farm is in clean and green. TERMS: 10% down balance in 60 days.  
Attorney Eveler & Eveler  
Bradley K. Smith GRI, CRS, CAI, AARE  
Auctioneer PA Real Estate Broker/Appraiser  
Lic. # 860 Ph. 717-927-6949

**ALLENTOWN S.D.  
SURPLUS AUCTION  
JOHN PFEIFFER AUCTION  
SAT., NOV. 22, 2003  
@ 10:00 AM**

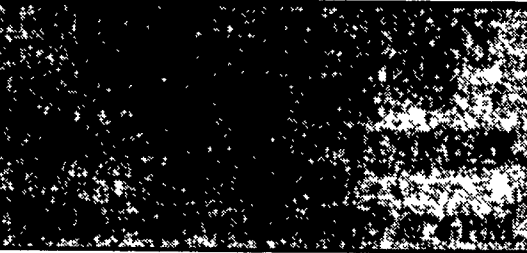
Located at 13th & Sumner Ave., Allentown, PA Rt. 22 to Allentown, South on 15th St., Left on Roth Ave. Watch for Signs at next light.  
'84 Ford Club wagon van; Namco forklift; 3 reel gang mower; V-pow; 6' trailer; Meyner EZ 8 salt spreader; Airco mig welder; 2 Trane heater units; Winches; Motors; Exhaust fans; 1/4hp-3hp motors; 3 drill presses; 6 wood lathes; 6 metal lathes; Shaper; Joiner; Drawing & drafting tables; 2 planers; 2 band saws; Table saw; 2 sheet metal tables; Elec. jackhammer; 46 boxes of bulbs; 6 Crane urinals; 20 New American Standard urinals; SS sinks; 200+ various desks; 300+ various chairs; Balcony seats; 20+ doors; 4 kilns; Partitions; 4 cases of binders; Lockers; Bike rack; Gymnastic equip - 3 horses; 2 spring boards; 3 parallel bars; 5 balance beams; Ping pong table, Univ. gym; 2 port. basketball standards; Barb wire; 11' I-beam, Wood mail bins; 30+ various tables; Shelving units; Some computer items, Paints & much more. Too much to list!  
TERMS: Cash or PA Check. Preview at 9:00am. Food will be available.  
**JOHN PFEIFFER, JR. - AUCTIONEER**  
AU-2982L 610-262-0423 or jpfeiffer@enter.net

**PUBLIC AUCTION  
Friday, November 14, 2003  
9:00 A.M.  
Tractors, Farm Mach., Tools**

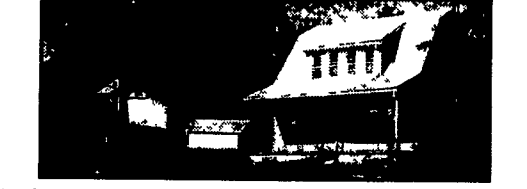
LOCATION: 6095 Old Phila. Pk. along Rt. 340, from Rt. 23 turn S on Churchtown Rd. to Rt. 340 W 1 block to sale, 2 miles E of White Horse, 1 mile W of Compass S on Rt. 10 turn W onto Rt. 340 to sale Lanc. County, PA.  
Tractors  
Case IH 7110, Magnum 135 h.p., cab - air, fully equip., 4,680 hrs. J.D. 2940, 95 h.p., 3200 hrs. J.D. 2940, 95 h.p., 7200 hrs. J.D. 2350, 65 h.p. w/J.D. loader #175 J.D. 250 skid loader, 65 h.p., 700 hrs., like new Set of dual wheels  
Farm Mach.: J.D. 3970 chopper, excel. cond. with elect. 7 1/2" grass head, 3 rd. head corn head; N.H. F628 blower, 3 yrs. old, like new; N.H. 1431 disc bine, 13'4" wide, like new; Glenco disc harrow, 18'6" wide, 24 disc; N.H. hay liner; No. 320 baler, also bale thrower; J.D. grain drill, No. 8300 20 disc; 3 - Myers forage wagons, 14 ton tandem wheels plus extension discharge, gd. cond.; 3 Hay bale wagons - 18 ft. Zimmerman, 18 ft. Gehl, 20 ft. Gehl, tandem wheel with steel beds; (2) 10 ton gravity wagons 350 bu; Yedder 6 row cultivator; 6 Row rotary hoe (new); Farmhand hydr. feed mill; 15' Hay tedder; Wil-Rich sub soiler (new); N.H. No. 166 hay converter; I.H. 145 18" 4 bottom roll over plow; J.D. 680 400 bushel spreader tandem wheel; N.I. 325 2 row corn picker with 12 roll husking bed; 2 - 18' flat bed Calhoun wagons; Hardi DK 2600 sprayer w/500 gal. tank elect. controls w/tandem wheels; N.H. 36' elevator; Zimmerman 28' elevator; Grain elevator; Brillion 15' cultimulcher; Glenco. 9 tooth chisel plow; 20 - Zimmerman gates from 8' to 24'; Fiberglass 500 gal. tank w/valve; 2 - Feed bins 3 1/2 & 5 ton; 40 ton hydr. jack (like new); 12 ft. Jamesway VoluMatic silo unloader; 20 ft Vol-2 silo unloader; 250 Chain barn cleaner 5 h.p. motor; 300 ft. Pipeline stainless steel 2" milker line w/washer pump; 5 - Westfalia milkers; 7 h.p. Alamo I-3 spiral system (like new); Calf hutches 6 pen & 8 pen sections; 1000 gal. gas tank on skids; 60 bu. corn crib; Spouting; 12 ft. fill pipe; Stewart cow clippers (some new); Tools plus other items.  
Auct. Note: All machinery in like new condition.  
Terms: Cash or PA check. No out of state checks.

**PRIME  
REAL ESTATE  
AUCTION  
THURS., DEC. 11, 2003 1:00 PM  
4 Acre Wooded Building Lot on  
Reservoir Rd., East Earl Twp.**

Directions: From Blue Ball, PA 17506, Follow Rt. 322 East to 897 South, approx. 1 mile, Right on Reservoir Rd., approx. 1/4 mile to private drive on right. Watch for auction signs.  
Located on the top of the Welsh Mt. this valuable property provides gorgeous seasonal views, wild life and seclusion from main thorofares w/access on private road, yet is just minutes from Turnpike and Interstate access. Presently stoned, private rd. blacktop included in selling price. Sale will be subject to approval of subsoil sewer system Lot size is 235' wide, 740' deep, 3.958 acres.  
10% Cash or approved deposit due date of auction.  
Settlement on or before June 29, 2004  
For more info or private rd. maintenance agreement contact Patrick Morgan or Roger Spencer 717-354-6671.  
Site is open for pre auction inspection.  
Sale conducted by:  
**Martin Auctioneers Inc.**  
Paul Z. Martin Jr. Sale For & Terms By: VERNOR R. MARTIN  
AU1863-L Roger Spencer Attorney: Doug Good  
AU1454-L Patrick K. Morgan Wentz, Weaver, Kling  
AU3557-L 717-354-4456  
Phone: 717-354-6671 Fax: 717-354-8248  
martinauctioneers@frontiernet.net  
www.martinauctioneers.com  
PA-AU-000144L • CA-879  
PA-AU-0001863L



Location: 359 E. Church St (between Reamstown & Hahnstown) Rt. 322E from Ephrata cross under Rt. 222 bypass turn left onto Hahnstown Rd (becomes E Church St) approx 3 mi to property on left. E Cocalico Twp., Lanc Co



Real Estate consists of 2 sty frame/vinyl sided house w/1584 sq ft area Eat-in country kitchen w/oak cabinets & built-in pantry, sandstone fireplace, large living room, den/office, full bath, 1st floor laundry, 3 bdrms., full bsmt Oil forced air heat Alum clad soffit & fascia, replacement windows Detached 2-car garage All on 2.6 acres w/small stream  
Note Desirable location - tasteful decor - move-in cond house Abundant lawn & garden area w/fruit trees & meadow Mature shade & large pine trees Inspection by appointment or open house on Sats, Nov 1 & 8 from 1-4 PM For brochure, land plotting or financing, call Auctioneers at 717-445-4309 or 717-733-1006 Terms 10% down. balance 60 days  
Terms By:  
**DARYL B. & CAROLYN J. FOX**  
717-335-0623  
Linda Kling, Atty.  
Auction Conducted By:  
Randal V. Kline, Roy E. Good, Jr., Keith Snyder, Auctioneers  
Lic. #2116, #499, #3433  
717-445-4309  
**KLING, KREIDER & GOOD**  
AUCTIONEERS  
www.klinekreidergood.com

**Snyder's  
Auction  
Service**

Sale For:  
**Henry and  
Anna Mary Lapp**  
(717) 442-8517  
Refreshments

Paul (717) 733-7052 Michael (717) 291-5749  
AU-003489-L