

350 TRUCKS / TRAILERS

7511 Allentown Blvd.
Harrisburg, PA 17112

AFFORDABLE CARS AND TRUCKS, INC.

717-652-1925
FAX 717-652-4888
Hours: Mon. & Tues. 9-9
Wed. thru Sat. 9-6

75 TRUCKS
IN STOCK

"You Gotta Believe!!"

New Exit #72A, Rt. 81 N; Rt. 22 East of Harrisburg; 3 Miles North of Hershey Park

97 FORD F250 XLT 4x4

EXT LONGBOX, H.D.,
8800 GVW, 351 V8, AT,
AC, PW, PDL, Tilt,
cruise, + More
Very sharp truck,
new tires, 140K



\$10,500

96 DODGE 1500 4x4 LARAMIE SLT

SHORTBOX, EXT
CAB, 360 V8, AT, AC
PW, PDL, Leer Cap
Super Nice, Low Mile
Truck 70,000 Mi
Flawless!



\$10,995



**97 CHEV 1500 4x4
SILVERADO**

3rd Door, SHORTBOX, EXT CAB,
VORTEC 350, AT, AC, PW, PDL, Tilt, +
more Leer Cap! Only 82K, Mint
Condition **\$11,995**



**93 FORD F150 4x4
XLT SHORTBED,**

300 6 Cylinder, 5 Spd, Fully
Loaded, Extra Nice Truck, 125K

\$4,995



**00 DODGE RAM 2500 4X4
SLT LARAMIE QUAD DOOR,**

Longbed, Cummins Turbo DSL, AT,
AC, PW, PDL, Leather Interior, This
Truck Is All Black & Like New, 102K

\$19,995



**00 FORD F250 XLT 4X4
SUPER DUTY QUAD DOOR
LONG BOX**

7 3 Powerstroke, AT, AC, PW, PDL, Tilt,
Cruise & Much More, 100,000 Mi

\$19,995



**90 CHEV 1500 4X4
SILVERADO PU**

350 V8, AT, AC, PW, Longbox,
New PA Insp. Very Clean Truck,
1-Owner, 150K, No Rust!

\$4,995



**99 FORD F-350 XLT 4x4
SUPER DUTY 1-Ton**

7 3L Powerstroke, AT, AC, PW,
PDL, Tilt, 110K, Black,
Extremely Nice Truck

\$17,995



**95 DODGE RAM 2500 4X4
SLT LARAMIE H.D.**

8600 GVW, 360 V8, AT, AC, + All
Power, 100,000 Mi

\$8,995



**98 DODGE RAM 2500 4X4
SLT LARAMIE**

Cummins Turbo Disc, 5 SP Only 60,000
Miles With All the Equipment
Want a New Truck For 1/2 the Price!

\$19,995



**87 CHEVY 1500
SILVERADO 4X4**

V8, AT, AC, PW, PDL,
Nice Clean Truck, 130K

Only \$3,495



**99 DODGE RAM 4x4 2500 SLT,
Laramie, Quad Door, Long Box, Cummins
Turbo 5 Spd, Fully Loaded, Flawless, Texas
1-Owner This Is A Most Desired Truck On
The Used Market Only 100,000 Mi Hurry**

\$19,995



**97 FORD F150 XLT
SHORTBOX**

V8, AT, AC, PW, PDL, Tilt, Cruise, Really Good
Looking Truck, All Black & She's A Beauty
100,000 Mi

Only \$6,995



**86 CHEV. 2500 4x4
SCOTTSDALE H.D.**

8600 GVW Rare 350 V8 & Factory Stick
Mint Condition, Truly Flawless Body
Ready To Work 100,000 Mi

\$5,995



**98 DODGE DAKOTA SLT
4X4 SPORT**

Ext Cab, V6, AT, AC, PW, PDL,
Tilt, Cruise & More 100,000 Mi
Dk Green

\$7,995



**99 FORD RANGER XLT
4X4, QUAD DOOR**

Ext Cab, Jelco High Cap, 4.0 V6,
AT, AC, Stereo, Cruise & More!
Only 60K, Showroom Cond.

\$10,995 Firm



97 FORD F250 XLT 4x4 EXT.

Longbed, 7.3 Powerstroke, AT, AC,
PW, PDL, Tilt, & More, 2 Tone Blue,
100,000 Mi

\$15,995



**96 TOYOTA TACOMA 4X4
EXT. CAB**

4 Cyl, 5 Sp, AC & Loaded,
150K, All Black, Mint Condition

\$6,995



**94 1/2 FORD F-250
XLT H.D. 4x4**

7 3L Powerstroke, 5-speed, AC, PW,
PDL, 4 New 10 Ply Radials, 200K but
Runs and Looks Like a 70K Mile Truck

\$8,995



96 FORD F350 XL 4x4

1-Ton, 9000 GVW, H.D., 7 3 Powerstroke
dsl, 5-speed, AC, cloth seat, Real Clean
Truck, No Disappointments All blue, 140K

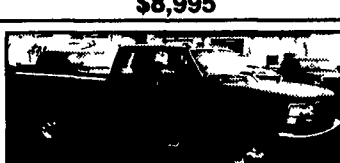
\$12,995



**88 CHEVY C-30 4x4 CREW
LONGBOX SCOTTSDALE,**

2 Tone Red/Black 350 V8,
5 Spd No AC, 100,000 Mi Just Traded
And This Is A Nice Truck! I Have The
Only One On The East Coast

\$6,995



**96 FORD F250 XL 4x4
EXT LONGBOX, 7 3 Powerstroke
DSL, 5 Sp, AC & More, 180K All
Well Cared For & Maintained Miles,
New Rubber**

\$11,995



97 FORD F250 XLT 4X4

Ext Longbox, 7 3 Powerstroke Dsl,
5-Speed, AC, PW, PDL, Tilt, Cruise,
Beautiful 2 Tone Green Paint, Truck
Is Sharp, 150K

\$14,995

Disclaimer Mileage listed for your convenience only it is approximate not to be relied on as exact Sorry for any inconvenience

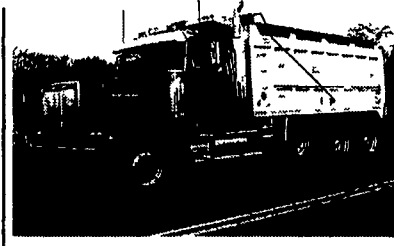


KENWORTH OF PENNSYLVANIA

Used Trucks Sales - Carlisle - 800-692-7324
"WE BUY USED TRUCKS" (717) 766-8000



1998 & 1999 KW T600B 62"
Aerocab Aerodyne, 430
Detroit, 9 & 10 Speeds, Airride
\$26,900 & \$29,900



1998 Western Star 4964FX
17-1/2' Alum. Dump, 475 Cat,
8LL, 323K Miles, Very Clean
\$54,900



Used Thermo Kings

**Super II 30 MAX Factory
Reman Engine and Compressor,
2 yr. warranty**

\$9,500

**MD I 30 Running and Cooling
\$2,500**

**MD II 30 R134a 300 hrs
Running and Cooling
\$7,500**



**2000 W900L 72" Aerocab
Flattop,**
389,000 Miles, 525 Cummins,
18 Speed, PTO, Sofabed
\$49,000



**1988 FORD F700, Diesel Ford, Auto, White, 9' Mechanics
Body w/Enclosed Superstructure, Sullair Rotary Screw Air
Compressor 125CFM Diesel Engine, Hours 2364 GVWR
26,500lb, Air Brakes, Mileage 96 121, Good working unit, Stk
#170181, \$7,900.**



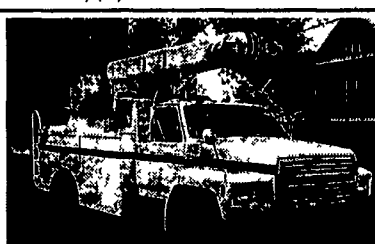
**1994 Yanmar 86-2 Excavator, Offset Boom,
37HP Engine, Weight 12,000 lbs, Stk# 350011
\$15,900**



**2002 Kaufman Tri Axle Car Trailer, Excellent
Condition, \$4,500**



**1992 Ford F450 XL, 7 3L diesel 5 spd, 11' crane
reinforced body w/Liftmoore 3200lb crane,
11HP Kohler air compressor with Hose Reel,
manual outriggers, nice truck, Stk #170200,
\$12,500**



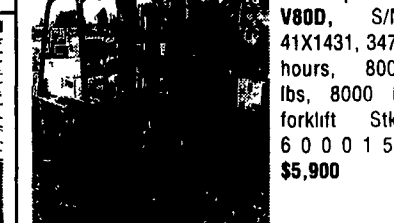
**1991 Ford 700, Diesel Ford, Automatic, White,
Asplundh, 36' bucket, 11' service body, A/C,
GVWR 26,500, Mileage, 108,137, Nice unit, Stk
#152101, \$10,500**



**CATERPILLAR 988A, S/N 87A5762, CAT Rubber
Tired Loader, EROPS Cab w/Air Conditioning, 11' Spade
Nose Bucket 5 Yard or GP Bucket, Complete History on
Machine, Excellent Condition, Stk#960106 \$24,900.**



**1997 Grove SM3844XT, S/N 43328, 1250 lbs.,
1997 Grove Manlift 4 wheel drive, Gasoline or
propane power, GVW 9340, Max height 32',
good condition stk #520001, \$6,900**



**Caterpillar
V800, S/N
41X1431, 3473
hours, 8000
lbs, 8000 lb
forklift Stk#
6 0 0 0 1 5,
\$5,900**

Flatbeds For Sale

18' Flatbed with headboard, stake pockets,
steel floor, 100" wide, 2 tool boxes **\$2,000**
19' flat with headboard, plywood floor **\$500**

Van Bodies For Sale

Morgan 18' Van body 88" wide, 85" high **\$1,500**
Morgan 20' van body with Liftgate 93" wide,
85" high **\$2,000**
Morgan 22' van body 88" wide, 98" high **\$1,500**
Morgan 22' van body, 2 side doors, 88" wide,
85" high **\$500**

Dump Bodies For Sale

2001 Beau-Roc 20' steel dump body, 42" sides
with coal slide, heated **\$5,000**
Galcon 16' aluminum dump body 48" sides **\$3,500**
R&S 16' aluminum dump body 46" sides **\$3,500**
R&S 15'6" steel dump, 52" sides, tarp **\$2,000**
14' steel dump 54" sides coal slides **\$3,000**

Curry Supply Co. 1-800-345-2829
Curryville, PA **814-793-2829**