

00 Chev. K-3500
Ext-cab, Dually, 4x4, 6.5 turbo diesel,
5 spd., AC, Cruise, Tilt, cass,
10,000 GVW, 4.10 limited slip rear,
52,000 miles, pewter
\$19,900

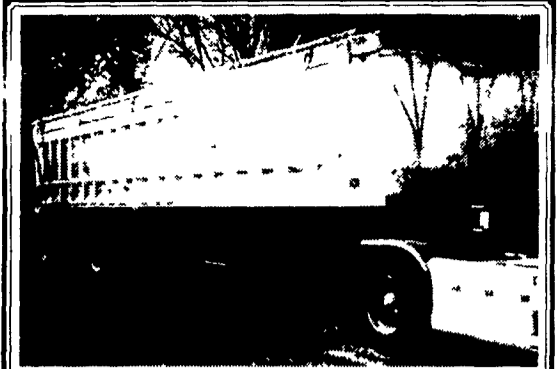
1997 GMC K2500 SL 4x4
350 Vortec, 5 Sp, A/C, Cruise, Tilt,
Cas., Sliding Rear Window, 3.73 Lit
Slip Rear, 8600 GVW, Clean Local
Truck 130,000 Mi., Blue Green
\$8,900

MARTIN'S AUTO SALES
1025 W. Main St., New Holland, PA 17557
(717) 656-6621

**1985 Ford
Fertilizer Truck**

3208 cat, 10 spd. good condition with
Tyler 16 ton tender box.
14' Side discharge auger all hydraulic.
Good condition.

**Call
1-888-845-1814
Lanc. Co.**



1995 Ravens Dump Trailer
40 Ft. Frame, 38 Ft. Box, 66" Sides, Shur-Lok Roll
Tarp, 1124 -5 Tires, Air Ride, Excellent Condition
Weber Enterprise
New and Used Aluminum Dump Trailers
473 Glenn Mar Ave., New Holland, PA 17557
Phone and Fax - (717)354-0920

**BRUBAKER'S
AUTO SALES**

PH. 717-866-5237

Hours: Mon.-Fri. 8 a.m.- 9 p.m.; Sat. 8 a.m. - 6 p.m.

ROUTE 422
MYERSTOWN, PA



99 CHRYSLER TOWN & COUNTRY LIMITED, SLATE, 3.8 V6, AT, PW, PL, CC, DUAL-AC, LEATHER, HEATED SEATS, CASS & CD, TRAC, KEYLESS, 57,895 MI **\$12,900**



99 FORD EXPLORER SPORT 4x4, ORANGE, SOHC, V6, AT, AC, PW, PL, CC, TILT, PWR SEAT, AM/FM/CASS/CD, KEYLESS ENTRY, 45,055 MI **\$10,900**



01 NISSAN PATHFINDER SE 4x4, BLUE, 3.5 V6, 5 SP, AC, PW, PL, CC, TILT, AM/FM/CASS/CD-6, KEYLESS ENTRY, 70,160 MI **\$13,900**



01 NISSAN XTERRA XE, 4 DR., 4x4, GREEN, 3.3 V6, AT, AC, PW, PL, CC, TILT, AM/FM/CASS./CD, KEYLESS ENTRY, 58,865 MI. **\$14,900**



01 DODGE RAM 1500 LARAMIE SLT 4x4, QUAD CAB, RED, 5.2 V8, 5 SP, AMFMCAS, AC, PW, PL, CC, TILT, CD CHANGER, 69,660 MI. **\$14,800**



01 FORD WINDSTAR LX, GOLD, 3.8 V6, AT, AMFMCAS, PW, PL, CC, TILT, DUAL-AC, KEYLESS ENTRY, 35,905 MI **\$10,900**



01 DODGE DURANGO SLT 4x4, 7/PASS, MAROON, 4.7 V8, AT, AMFMCAS, AC, PW, PL, CC, TILT, PWR SEAT, KEYLESS ENTRY, 62,920 MI **\$15,900**



00 CHEVY BLAZER LS, 2 DR., 4x4, PEWTER, 4.3 V6, AT, AMFMCAS, AC, PW, PL, CC, TILT, 60,775 MI **\$9,900**

GM Goodwrench Engines

feel the confidence



THE FEELING IS GENUINE



- 12 Month Minimum Warranty
- Limited 36 Month Warranty
- Shipped As Shown

86 and prior carbureted 4 bolt main.....\$1,370
87-95 TBI, Truck, 2 bolt main.....\$1,799
87-96 TBI, 3/4 Truck, 4 bolt main.....\$1,899

**Jones
Parts Warehouse**
A Division of Jones Family of Dealerships

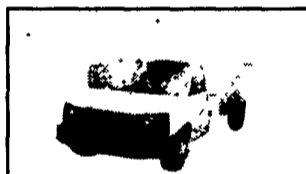
Prices are subject to change. Prices do not include shipping.
Please call for the best possible shipping prices for you

1-800-827-0129

**OVER 60 PRE-OWNED TRUCKS ON THE
LOT AS LOW AS \$3500 AND DISCOUNTS UP TO \$3800
AND GUARANTEED TRADE IN'S UP TO \$4000 ON SELECT TRUCKS**



NEW 04 GMC HD K2500 XCAB 4x4,
AT, AIR, V8, 8,200 GVW,
8' BED, #44580
SALE PRICE \$29,370*
OR \$411.00 PER MONTH**



NEW 04 GMC 16' CUBE VAN W/ RAMP
AT, AIR, V8, SUPREME
BODY, 10' RAMP, #45085
SALE PRICE \$29,800*
\$399.00 PER MONTH**



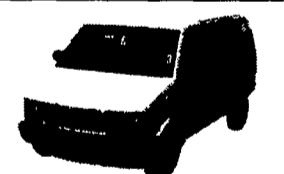
NEW 2004 GMC HD K2500 CREWCAB 4x4 DIESEL
ALLISON, AIR, 6.6
DURAMAX, SLE, #45045
SALE PRICE \$41,500
\$575.00 PER MONTH**



NEW 2003 GMC YUKON XL
AT, Air, SLE & Much More,
#44069, w/REBATES OFF
\$33,877



NEW 2003 GMC C4500 DUMP BODY
Duramax Diesel, Allison
Automatic & Much More!
#41252, MSRP \$33,900



NEW 2003 GMC SAFARI CARGO VAN
AT, Air, V6, #43763,
\$18,888* OR FINANCING
@ \$249** PER MONTH



2003 GMC K2500 XCAB DURAMAX DIESEL
4x4, Allison Auto, Air, Duramax Diesel, SLE, #44408,
MSRP \$45,015 SALE PRICE
w/REBATES OFF \$39,915



02 GMC ENVOY 4x4
AT, AIR, RED,
16K MILES, #7605
\$25,580 OR MAKE OFFER



01 HONDA CRV 4x4
EX, AT, Air, 18K Miles, Black,
#7559
\$19,900 OR BEST OFFER



01 DODGE RAM 2500 XCAB 4x4
AT, AIR, WHITE, #7609
\$23,980 OR MAKE OFFER



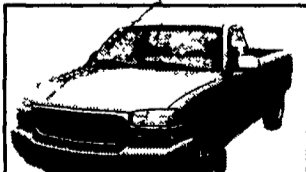
01 DODGE RAM 1500 XCAB 4x4
AT, AIR, BLUE, #7607
\$17,400 OR MAKE OFFER



01 GMC SIERRA 2500 CREW 4x4
AT, AIR, WHITE,
22K MILES, #7614
\$30,990 OR MAKE OFFER



2000 JEEP WRANGLER 4x4
AUTO, 4CYL, 41K MILES,
#7596
\$13,900 OR BEST OFFER



99 GMC K1500 4x4,
AT, Air, SLE, V8, 8 Bed,
#7587
\$16,000 OR MAKE OFFER



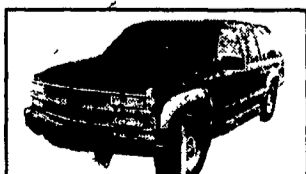
99 FORD EXPEDITION 4x4
Eddie Bauer, AT, Air, V8,
#7602
\$22,700 OR BEST OFFER



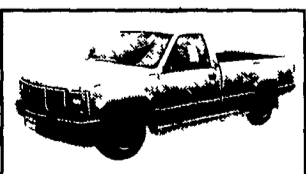
98 CHEVY BLAZER 4x4
4 DR, LS, AT, AC, #7471
\$11,400 OR MAKE OFFER



96 NISSAN QUEST GXE
AT, AIR, V6, NICE, #7551
\$8,800 OR BEST OFFER



94 CHEV SUBURBAN 4x4
AT, AIR, GREEN,
V8, 3/4, #7581
\$8,850 OR MAKE OFFER



93 GMC C1500 PICKUP,
AT, Air, 4300 Engine, 66K
Miles, 8 Bed, #7580
\$8,800 OR MAKE OFFER



92 CHEV SILVERADO 2500 XCAB, 4x4
AT, Air, BLUE, #7613
\$8,800 OR MAKE OFFER

PONTIAC • HONDA • GMC TRUCK • ACURA • USED CAR CENTER
1335 Manheim Pike • Lancaster, PA
717 394-0711
QUALITY PRE-OWNED BEST BUYS!



Prices based on straight sale. Tax and tags extra. Trades accepted at actual cash value. Must present this ad at time of purchase for sale price.

*All New Vehicles Include GM Rebates **PAYMENT REQUIRES 20% DOWN PLUS TAX & TAGS FOR 72 MONTHS