

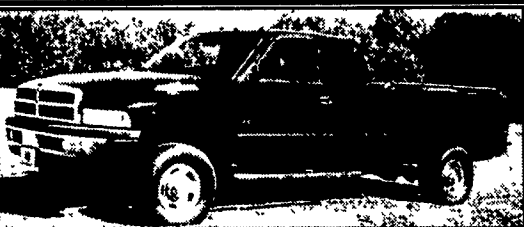
www.useddieseltruck.com

**CHECK IT OUT**



1998 Mitsubishi Fuso Model FE, 15'4" Box Truck, 4 Cyl., 238 135 HP Eng., Auto Trans., P/S, A/C, 11,600 Lb GVW, 215-85-R16 Good Rubber On Budd Wheels, Clean Good Running Truck  
**Only \$7,900**

**Camden Truck**  
215-925-0322  
856-456-4030



1999 Dodge 2500 Quad Cab, SLT, 4x4, 8' Bed, 24 Valve Cummins Turbo Diesel, Auto Trans., 74,000 Miles, One Owner, Most Options, Red and Chrome,  
**\$18,000. Call Day (302) 736-1886, Night (302) 653-3545.**

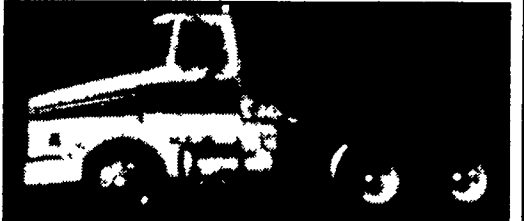


1993 CH Mack Tractor  
350 Engine, 9 Speed Transmission, Air Ride, PTO, Box For Wet Line  
**\$11,500 or Best Offer**  
717-438-3354



'88 Chevy Scottsdale  
C70 with 17 Ft Aluminum Jerr Dan Roll Back, 366, 5 Speed, 2 Speed, PS, PB, Air, Wheel Lift Tow Bar, 18,500 GVW, 79,000 One Owner Miles, Black, Ex. Cond.,  
**\$14,500**

**A&J AUTO SALES**  
798 E. Main St., Rt. 322 East, Ephrata, PA., 17522  
717-733-2873



1990 Volvo Day Cab Cummins BC 300, 476,000 Miles, 9 Speed, Air Ride, Good Rubber, Very Clean, PA Insp. **\$6,500 or Trade on Equip.**

**Dull Equipment Co., Inc.**  
1002 Rte. 501 S., Newmanstown, PA 17073  
Sales, Service and Rent • Financing Available  
**717-949-3451 • 717-629-7463**  
FOR MORE INVENTORY, PLEASE VISIT OUR NEW WEBSITE: [www.dullequipment.com](http://www.dullequipment.com)

1995 Ford F700  
Dump Truck,  
26,000  
GVW, no CDL  
required,  
17,000 miles,  
**\$19,500**  
610-754-7760



New Open Car Trailer \$1,499  
7,000 lbs. GVW, elect brakes, with ramps that slide out from under diamond plate steel runways  
4x8 Utility Trailer \$399 • Car Dolly \$699  
**302/368-9534**  
Newark, Delaware

**KEYSTONE TARPS**

SERVICE & SALES

Is A Manufacturer Of Custom Tarps

- Systems
- Tarps Straps
- Storage Covers
- Load Straps
- Gloves
- Used Railroad Ties



1-800-798-TARP (8277)

FAX 570-435-0036 570-435-0752

178 MUDDY CREEK CHURCH ROAD  
DENVER, PA 17517-9328  
(717) 336-7528 • FAX (717) 336-4655  
**800-952-4228**  
www.mgsincorporated.com

**MGS TRAILERS**

Dealer For **BigTex TRAILERS**

LARGE SELECTION GREAT PRICES

UTILITY TRAILER  
DUMP TRAILER  
CAR HAULER TRAILER  
UTILITY TRAILER

BIG TEX PRICES START AT:  
4x8 = **\$625**  
5x10 = **\$835**  
6x10 = **\$1,060**  
6 1/2x16 = **\$1,475**

Big Tex Trailers Also Available At  
**EAGLE RENTAL CENTER**  
Rt 272, Reamstown Traffic Light  
• 717-336-3945

Trailer Sales  
**OPEN DAILY 8-5**  
**SATURDAY 8-12**

TRAILER - - PARTS  
SERVICE, INSPECTION  
HITCHES INSTALLED  
BRAKE CONTROL INST.

**DRAW-TITE HITCHES**  
In Stock

Dealer For  
**WELLS CARGO**

WELLS CARGO PRICES START AT:

5x8 = **\$1,928**  
6x10 = **\$2,727**  
7x14 = **\$4,412**  
8x20 = **\$5,445**

**Best USED TRUCKS**  
of Pa. Inc.

131 Kline Rd., Bethel, PA 19507  
We're Located Right On I78 @ Exit 17

**WE BUY TRUCKS!**  
**717-933-9792**  
Fax 933-9782 www.besttrucks.net

(2) 1996 International 9300 SFA 51' Pro Sleepers Cummins N14 460 Hp 10 w/Overdrive, Jake Brake, White Excellent Maintenance! High Miles 3 7/3 Ratio 11R22 5 Tires Air Ride & Cab <b>\$13,700 ea. TC07625</b>	1991 FLD120 48" Flat Top Sleeper, 3406B-425 Hp, 15 Speed, 3 9/1 Ratio, Air Ride, 10 Alum. Wheels, Jake Brake 80R24 5 Tires Air Slide 5th, Tilt/Tele, 13 Gauges, Air Dump Valve Well Maintained! Million+ Miles <b>\$8,500 MH500248</b>	(2) 2000 Pete 379EXH 63" Ultracab, Cat 3406 475 Hp RTLO 10 Speed 360K/440K Miles Blue, 10 Aluminum Wheels, Jake Brake, LP22 5, All New Michelin Tires & Brakes 80% Starting At <b>\$46,500 YD480744</b>	1993 T600 42" Flat Top Removable Sleeper, Cummins N14-350+HP, 9 Speed, 695K Miles, White, 3 Stage Jake Brake 75R22 5, 3 5/5 Ratio, Air Slide 5th Power Windows, Single Bunk, <b>\$12,500 P1590872</b>	1988 Pete 379EXH, 63" Condo, 3406B 425 Hp, 13 Speed Maroon, 10 Alum. Wheels, 3 4/0 Ratio, 11R24 5 tires, 6" Straight Pipes, Jake, 17 Gauges, Power Windows, Cruise Control <b>\$19,900 267534</b>
1999 4700LP 10' Dump, Diesel 190hp Allison Automatic, 63K miles White, AC Will Haul 6 1/2 Ton Payload Pintle Hitch <b>\$25,900 XH675098</b>	1998 GMC HiCube 15' Van, 6 5L Diesel Automatic 10,000 GVW, AC White/Yellow 137K Miles, 2 Bucket Seats, Walk Through Door Area <b>\$9,900 W1067588</b>	1997 International 4700 19 Roll Back, Steel Body, Wheel Lift T444 175 Hp, 5 Speed Red, 232K Miles, 21440# GVW Hydraulic Brakes AC, Premier Interior, Power Windows Tilt/Tele, 3 2/1 Ratio, 80% Tires, <b>\$22,900 obo VH301782</b>	1996 FLC 112 Single Axle Daycab, Cummins M11E-310+, 9 Speed, 216K Miles White, Air Ride, Air Slide 5th, 4 1/1 Ratio, 162" Wheel Base 94" Cab to Axle, Cruise, 80%+ Tires, 11R22 5, <b>\$16,900 TL868063</b>	1999 GMC 3500HD 10' Dump Gas, Automatic, 21K Miles, White, AC 15000 GVW, Mason Dump, Fold Down Sides, Bench Seat <b>\$19,000 XF039199</b>
(2) 1999 Mack CH612 Single Axle Condo Sleepers E7 310 330 Hp, Mack Rears Air Ride, Eaton 9 Speed, Jake Brake Cruise, 600K Miles, Virgin Tires Maroon <b>\$16,900 XW015281</b>	1998 FL70 18' Stake Side Flat Bed, Cummins 5 9-190 Hp, .5 Speed, 25,500 GVW, Hydraulic brakes, 144K miles, Has rack over cab and attachments for 2 level stacking, <b>\$15,500 WH915959</b>	1996 FLD12064ST Tandem Daycab, Detroit 12 7-400Hp, 9 Speed, 342K Miles, Wet-Line, 10C Transmission, 204" Wb, 4 1/1 Rear Ratio, Jake Brake <b>\$15,500 TL867767</b>	1990 Pete 379EXH 48" Flat Top Sleeper, 12 7-450 Hp, 9 Speed, 4 1/1 Ratio, Low Pro 24 5 Tires, Gray, Jake Brake, Alum. Wheels, VERY CARED FOR! <b>\$19,900 LD300776</b>	(3) 1999 Freightliner FLD 12064ST 70" Condo's, Cat 12-410hp, 10 Speed, Air Ride, Ave 570K Miles, Gray, Double Bunk, Alum Steers, AC, Jake Brake <b>\$19,900 ea. XL988131</b>
1989 IHC 1754 22' Moving Truck, DT466 210 Hp, 5 Speed 177K Original Miles, Under CDL, Air Brakes White, 2 Roadside & 2 Curbside Doors <b>\$5,900 KH614879</b>	1991 8100 Single Axle Daycab, Cummins L10 280 Hp, 9 Speed, 340K Miles Spring Suspension 11R22 5 Stationary 5th AC White <b>\$8,500 MH342292</b>	1997 FLD12064ST Tandem Daycab, Detroit 12 7-430Hp 9 Speed 726K Miles White Air Ride & Cab 190 Wb, 3 9/0 Ratio Jake Brake 90% Rear Caps VERY NICE <b>\$16,750 VL757880</b>	1999 Isuzu NPR 9' Dump, DSL 175hp, 5 speed 84K miles, White 14500 GVW Spring ride ROOM FOR TOOL BOX! <b>\$16,900 X7015656</b>	1998 IHC 8100 24' Van, Cummins M11 280hp 9 Speed 460K Miles White, 33,000 GVW AC Spring Suspension <b>\$15,900 WH528227</b>