

### Four States Livestock Monday Sale

Hagerstown, Md.  
Report Supplied By Auction  
November 3, 2003

SLAUGHTER COWS: 67 HEAD, 1.00 LOWER. BREAKERS 43.00-50.00, BONERS 40.00-45.00, LEAN 35.00-40.00, THIN AND LIGHT 35.00 DOWN.

BULLS: YG+N2 1590 LBS. AT 53.00, 1 2232 LBS. AT 50.25.

FED STEERS: FEW OFFERED. 1 HIGH DRESSING CHOICE 2 1448 LBS. AT 111.00, 1 SELECT HOLSTEIN 1776 LBS. AT 65.75.

FED HEIFERS: DAIRY CULLS 1400-1600 LBS. 53.00-55.00.

CALVES: 113 HEAD, GOOD SLAUGHTER. 80-100 LBS. 70.00-80.00, 100-120 LBS. 80.00-90.00, 60-80 LBS. 55.00-70.00; HOLSTEIN BULLS RETURNING TO FARM, STEADY TO 10.00 HIGHER. +N1 94-120 LBS. 145.00-174.00, 84-92 LBS. 90.00-110.00; +N2 94-120 LBS. 105.00-145.00, 80-92 LBS. 75.00-90.00; HOLSTEIN HEIFERS +N1 100-120 LBS. TO 410.00, +N2 80-115 LBS. 250.00-360.00.

BUTCHER HOGS: +N1 AND 2 225-275 LBS. 40.00, 300-350 LBS. 32.00-35.50.

STOCK CATTLE: STEERS, NONE.

HEIFERS: RED 550 LBS. TO 70.00, 1 750 LBS. AT 66.00, 1 HOLSTEIN FRESH HEIFER AT 106.00.

BULLS: MED. TO PLAIN QUALITY 400-600 LBS. 60.00-70.00, 600-800 LBS. 53.00-56.00.

SHEEP: 25.00-41.00, BUCK AT 52.00.

LAMBS: 20 HEAD, MEDIUM TO GOOD 50-95 LBS. 75.00-89.00, PLAIN 40-90 LBS. 60.00-70.00.

### Westminster Livestock

Hagerstown, Md.  
Report Supplied By Auction  
Tuesday, November 4, 2003

SLAUGHTER COWS: 136 HEAD, 1.00-2.00 LOWER. BREAKERS 43.00-46.00, HIGH DRESSING 49.00-50.00, BONERS 39.00-44.00, LEAN 34.00-39.00, THIN AND LIGHT 34.00 DOWN.

BULLS: 12 HEAD, YG+N1 1400 LBS. AT 54.00; YG+N2 1100-2350 LBS. 50.00-52.00.

FED STEERS: LIGHT RUN, NO PRIME. HIGH CHOICE 1400 LBS. AT 99.00, 1050-1250 LBS. 93.00-96.00, LOW CHOICE 1000-1400 LBS. 82.00-87.00, HIGH CHOICE

HOLSTEINS 1650 LBS. AT 82.50, LOW CHOICE 1450 LBS. AT 71.75.

FED HEIFERS: HIGH CHOICE TO PRIME 1050-1150 LBS. 96.00-98.00, INDIVIDUAL AT 106.00, HIGH CHOICE 900-1000 LBS. 84.00-87.50, CHOICE 3 1350 LBS. AT 95.50, HIGH CHOICE HOLSTEINS 1472 LBS. AT 70.00.

CALVES: 108 HEAD, CHOICE 198 LBS. AT 95.00, GOOD 90-115 LBS. 70.00-85.00, 70-90 LBS. 65.00-76.00; HOLSTEIN BULLS RETURNING TO FARM 5.00-10.00 HIGHER. +N1 94-120 LBS. 145.00-172.00, 84-92 LBS. 100.00-125.00, +N2 94-120 LBS. 107.00-145.00; HOLSTEIN HEIFERS +N1 95-115 LBS. 380.00-430.00, +N2 70-90 LBS. 250.00-375.00, BEEF X BULLS 154 LBS. AT 110.00.

BUTCHER HOGS: FEW OFFERED. 2 334 AND 352 41.00 AND 45.00, 1 268 LB. AT 33.00.

SOWS: 500-600 LBS. TO 34.50.

BOARS: 400-600 LBS. 7.50-9.50.

STOCK CATTLE: 224 HEAD, HIGHER PRICES ON BETTER QUALITY. STEERS MED. AND LARGE FRAME 300-500 LBS. 91.00-109.00, 500-700 LBS. 81.00-94.00, 700-900 LBS. 70.00-81.00, 900-1050 LBS. 70.00-89.00.

HEIFERS: MED. AND LARGE FRAME 300-500 LBS. 72.00-89.00, 500-700 LBS. 70.00-82.00, 700-800 LBS. 65.00-80.00, 900-1050 LBS. 65.00-78.00.

BULLS: MED. AND LARGE 300-500 LBS. 78.00-86.00, 1 AT 95.00, 500-700 LBS. 68.00-85.00, 700-800 LBS. TO 74.00, 800-950 LBS. 63.00-68.00.

SHEEP: 25.00-40.00.

LAMBS: 78 HEAD, STEADY. HIGH CHOICE TO PRIME 100-125 LBS. 100.00-117.00, 140-160 LBS. 87.00-110.00, 70-100 LBS. 110.00-120.00.

GOATS: 58 HEAD, LARGE BILLIES 75.00-95.00, 3 HEAD 105.00-140.00, LARGE NANNIES 65.00-83.00, MEDIUM 45.00-70.00, FLESHY 50.00-77.00.

PIGS AND SHOATS: 91 HEAD, BY THE HEAD, 20-25 LBS. 5.00-13.00, 30-39 LBS. 22.00-32.00, 50-78 LBS. 40.00-48.00, 7 HEAD 92 LBS. AT 44.00; BY THE LB. STOCK BOARDS 250-325 LBS. 24.00-26.00.

### Friend's Stockyard

Accident, Md.

Report Supplied by Auction  
November 3, 2003

STOCK STEERS AND BULLS: 200-500 lbs. 55.00-101.00.

STOCK HEIFERS: 200-500 lbs. 51.00-97.00.

SLAUGHTER STEERS: Good to Choice 95.00-104.00, medium to good 81.00-94.75, heavy Choice over 1450 lbs. 70.00-80.00.

HOLSTEIN STEERS: heavy Choice 60.00-67.00, light 42.00-65.00.

SLAUGHTER HEIFERS: Good to Choice 95.00-102.00, Medium to Good 75.00-94.00.

BULLS: heavy 45.00-54.50, light 46.00-61.00.

COWS: Utility (Holsteins) 40.00-50.00, Commercial to Good 35.00-39.75, cull cows 34.00 and down.

VEALS: Good to Choice 50.00-90.00, Med. to Good 50.00-67.00.

BOB CALVES: 37.00 and down.

HOLSTEIN BULL CALVES, RETURN TO FARM: 90-120 lbs. up to 195.00; HOLSTEIN HEIFER CALVES, RETURN TO FARM: 90-120 lbs. up to 475.00, BEEF X CALVES return to farm up to 135.00.

HOGS: top quality, up to 52.00.

SOWS: up to 32.00.

LAMBS, Choice up to 97.00.

GOATS: Choice up to 75.00.

Livestock prices are all given per hundred weights.

### Grantsville Livestock

Grantsville, Maryland

Report Supplied by Auction  
Saturday, November 1, 2003

STOCK STEERS AND BULLS: 200-500 lbs. 64.00-111.00.

STOCK HEIFERS: 60.00-94.00.

SLAUGHTER STEERS: Good to Choice 74.00-83.00, Medium to Good 52.00-73.50.

HOLSTEIN STEERS: Good 50.00-63.00, Light 46.00-52.00.

SLAUGHTER HEIFERS: Good to Choice 73.00-78.00, Medium to Good 50.00-72.00.

BULLS: Heavy 44.50-57.00, Light 40.00-47.00.

COWS: Utility Holsteins 40.00-56.50, Caners 34.00-38.50, Culls 32.00 and down.

BOB CALVES: 40.00 and down.

HOLSTEIN BULL CALVES RETURN TO FARM: 90-120 lbs. Up to 110.00

HOLSTEIN HEIFER CALVES RETURN TO FARM: Up to 165.00.

BEEF CROSS CALVES RETURN TO FARM: Up to 145.00.

HOGS: Top Quality up to 54.00, Heavy up to 50.00, Light 25.00-49.00; FEEDER PIGS, BY HEAD: Up to 43.00.

SOWS: 20.00-40.00

MALE HOGS: 4.75-21.00.

LAMBS: 70-85 lbs. up to 116.00, 85-125 lbs up to 98.00, 30-60 lbs. up to 98.00, Culls up to 70.00.

SHEEP: Up to 45.00, FAT UP TO 30.00.

GOATS: Large 55.00-115.00, Medium 25.00-83.00, Small 10.00-51.00, all by the head, kid 3.00-50.00.

Feeder sale every second Sat. per month.

### Livestock Cooperative Auction Market Of North Jersey

Hackettstown, N.J.

Report Supplied by Auction  
Tuesday, November 4, 2003

CALVES 16-290.  
COWS .22%-56.  
EASY COWS .12-39  
FEEDERS 300-600 LBS .15-.93.  
HEIFERS .20-.84  
BULLS .40%-65.  
STEERS .40-.95  
HOGS .02-.36.  
ROASTING PIGS EACH 16.00-28.00.  
BOARS .09%-10.  
SOWS .05-.31.  
SHEEP .12-.50.  
LAMBS EA 10.00-65.00.  
LAMBS PER LB. .30-1.35.  
GOATS EA. 35.00-110.00.  
KIDS EA. 10.00-65.00.  
HIDES 25.00-33.00.  
TOTAL: 752.

### LIVESTOCK FUTURES MARKET

Chicago Mercantile Exchange  
Wednesday, November 5, 2003

	Choice Steers		Choice Feeders		Live Hogs		Frozen		
	Today	Wk Ago	Today	Wk Ago	Lean Value	Today	Pork Bellies	Today	Wk Ago
N 03	98.400	96.600	103.225	100.075	-----	-----	-----	-----	-----
D 03	94.100	91.425	-----	-----	52.925	52.650	-----	-----	-----
J 04	92.500	90.050	96.375	94.875	-----	-----	-----	-----	-----
F 04	89.650	86.200	-----	-----	55.575	57.675	87.400	86.725	-----
Mr 04	-----	-----	89.725	90.900	-----	-----	86.100	85.900	-----
Ap 04	82.075	81.600	88.300	88.550	60.150	59.100	-----	-----	-----
My 04	-----	-----	87.150	87.975	62.100	61.700	87.700	86.700	-----
Jn 04	75.325	75.500	-----	-----	65.175	64.475	-----	-----	-----
JI 04	-----	-----	-----	-----	62.075	61.000	91.000	89.200	-----
Au 04	74.050	74.650	89.500	88.950	60.750	60.050	89.000	88.200	-----
S 04	-----	-----	89.500	88.600	-----	-----	-----	-----	-----
O 04	74.500	74.800	-----	---	53.975	53.100	-----	-----	-----
N 04	-----	-----	-----	-----	-----	-----	-----	-----	-----
D 04	76.400	-----	-----	-----	53.900	53.100	-----	-----	-----

### MRI - At Affordable Rates



LEBANON  
OPEN MRI

1035 Queen's Road  
Lebanon, PA 17042

717-228-2600

800-298-1558

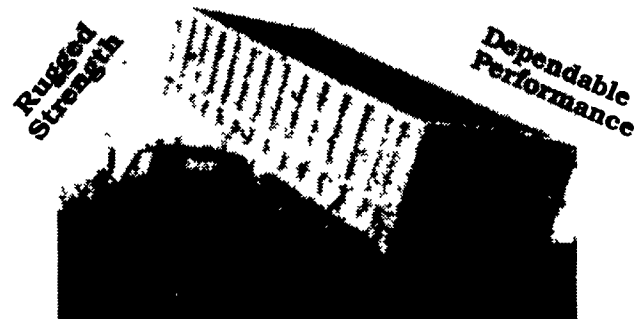
Call 8 AM - 5 PM M-F

Most Insurances Accepted

- New state-of-the-art Open MRI
- Most experienced Radiologists in the area
- Friendly professional staff
- Reports to your doctor within 24 hours
- We accept \$475.00 cash or credit for full payment for a normal study, including doctors reading fee

*It's Worth The Drive. Ask For Us At Your Doctor's Office.*

### ALUMINUM GRAIN BODIES & ALUMINUM REPAIRS by



These ultra-light bodies are designed for strength through engineering, not strength with bulk. For example, a 16' grain body with tailgate and 48" sides weighs only 1490 lbs. complete. We'll build you any length or any side height up to 60".

Also available:

- Double swinging hay hauling tailgate
- Barn door type tailgate
- Slide out chutes
- Diamond flooring
- Pull out panel tailgates
- Any size grain chute

### HEWEY WELDING

1045 Wampler Rd. Lebanon, PA 17042 (717)867-5222



### LAPP'S CURTAIN SYSTEM

- Save up to 30% on fuel/energy costs
- Barns are warmer in winter, cooler in summer
- 4 or 6 ply insulated, with white vinyl outer layer. Non-insulated, single layer also available
- Average payback - TWO YEARS!
- We also repair other brand curtains

### Roll-Up Curtain Systems from RollSeal

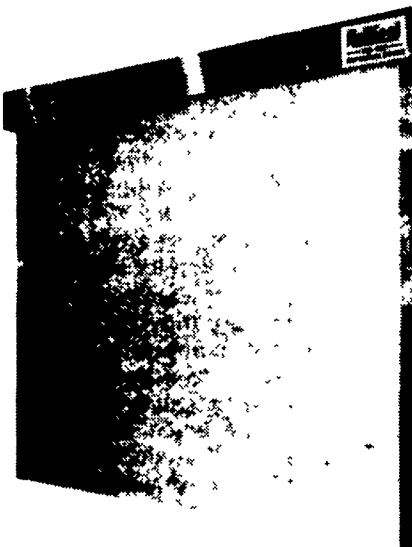
- Available in heights up to 7ft. for single panel systems and up to 14ft. for dual stacked systems
- Dual stacked system with independent control of upper and lower panels
- Rolls up neat and compact to protect life of fabric
- High UV, long life polyethylene fabric
- Withstands high wind loads
- Manual or motorized operation



### Door Systems from RollSeal

- Aluminum tracks and covers
- RollSeal patented seal system\*
- Fabric options
- Additional switches, opening devices
- Remote transmitter/receiver
- Four operators to choose from:
  - Manual Chain Hoist Operator
  - Tube Motor Operator
  - For applications requiring less than 10 opening cycles/day
  - 3 in/sec opening speed
  - Manaras Opera Continuous Duty Operator
  - 12 in/sec opening speed, Manual backup
  - High Speed Operation
  - Up to 42 in/sec

\* RollSeal Green's patented sealing system utilizes commercial hook and loop, reducing movement of air, dust, dirt and other contaminants from room to room. Multi-layered high density woven polyethylene fabric has two air pockets that provide good thermal insulation characteristics



### LAPP'S BARN EQUIPMENT, INC.

5935 Old Philadelphia Pike, (PA Rt. 340)

Gap, PA 17527

PHONE: 717-442-8134