

15 CONSTRUCTION EQUIPMENT

Forklift 5000 lb 79 Cat, 3 stage mast, good cond. York Co.(717)927-1313 Elam King
Terex Pay loader, 4x4, 115hp, runs good, \$6500. (717)582-8235

Snow Plow, Fisher 9' minute mount, ex cond, \$1975. (610)779-5824

JD 380 Forklift w/hose reel w/new mast cylinder. 570-943-2131

Bradco 8MD backhoe attachment for skid ldr, fits Mahto or Prime Mover and other mdls, \$2,800/obo 717-566-6223

JD 4610, 450 hrs, 460 ldr, hydro, \$21,000 obo. Cat 931 trac loader, 4N1 bkt, new U/C, trans, clutches, brakes, \$14,000 obo. Hardi 3pt sprayer, \$800. (814)848-5053

AC HD6 Crawler Dozer serial # HD6-B173, make offer (570)584-2928; photo available

High Back Truck Seat Aluminum truck steps 10 hole bud hubs side stand for 55 gal drum (717)933-4038

1988 Cat 935C, approx 3700 hrs total, 300 hrs on new track, 200 hrs on rebilt eng, new radiator, \$28,000. (301)824-6023

M a n u a l s
Parts/Service/Operators: Caterpillar, Case, International, Fiat, Komatsu - too many to list. Call Heavy Equipment Loader Parts, 717-469-0039, fax request 717-469-7679, e-mail helpinc@comcast.net

1983 D6D LGP, 90% U/C, 125 hrs, rebuilt trans & torque, new steering clutches, tight-straight blade-tilt, \$38,500 obo. 609-655-2281

Hudson trailer, 16', 10,000 lb GVW w/folding ramp, \$1000. (610)779-5824

Case 584C forklift w/21' mast, low hrs, great cond, \$7000. (908)534-2705

Rain Master model SS5H75 trailer mounted, 5" water pump, powered by Ford 6 cyl gas eng, \$1,200 obo. 814-658-3066

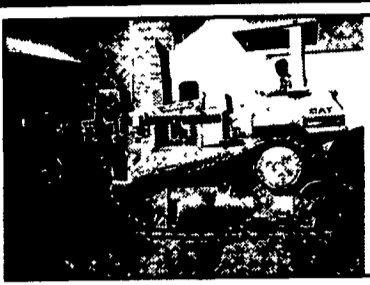
Celebrating Our 20th Year 1983-2003

JERRE MARTIN REPAIR

391 N. Farmersville Rd., Ephrata, PA 17522
(Just minutes off RT 222)

717-859-3283 Toll Free 877-317-5348

Celebrating Our 20th Year 1983-2003



'88 Cat D5H, 6-Way Blade \$34,000



Flat Allis FL5 Crawler Loader, 4N1 Bkt., Rebuilt Eng. \$13,500



'97 Hamm 2420, 84" Drum Drive \$29,000



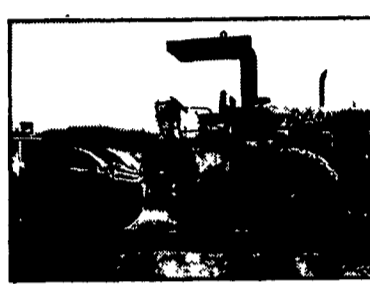
'93 Cat 320N Excavator, 8.5' Transport Width, Quick Coupler \$42,000



'91 Cat 963 Crawler Loader, Like New U/C \$40,000



Komatsu D21S Crawler Loader (Late Model) \$13,000



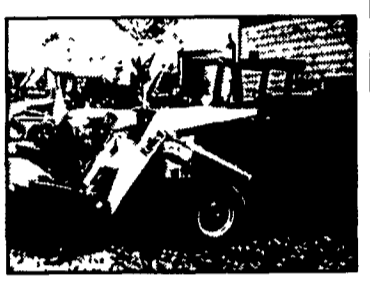
IR SD100D Roller \$32,000



JD 570A, Excellent \$16,200



'99 JCB 8015 mini-excavator, like new \$11,500



MF 165 Multi-Power w/Loader \$55,000



'82 Cat 943 Crawler/Loader, Rebuilt Eng., New Undercarriage \$25,000



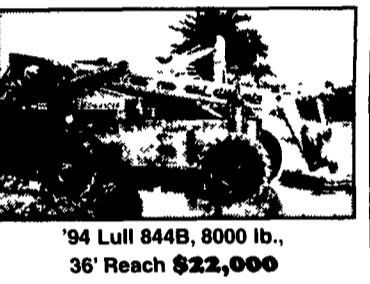
JD 544 Loader \$12,500



'94 Lull 1044, 42' Reach, 10,000 lb. w/Out Rigger \$25,000



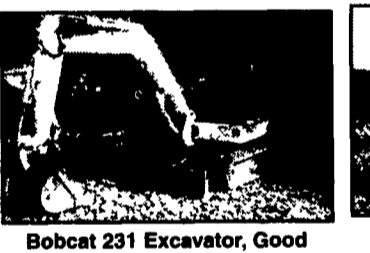
Lull 1044, 10,000 Lb., 42Ft. w/Outriggers, JD Dsl. \$23,500



'94 Lull 844B, 8000 lb., 36' Reach \$22,000



'97 Cat 963B, New UC, New Paint \$75,000



Bobcat 231 Excavator, Good Cond. \$12,500



2000 Komatsu PC45R utility excavator, plumbed \$23,500



JD 860A scraper \$11,500



Lull 644, Perkins dsl \$15,750



'97 Traverslift 6035 w/JD dsl \$23,000



Flat Allis FL14C Loader \$13,500



99 JD 455G \$28,000



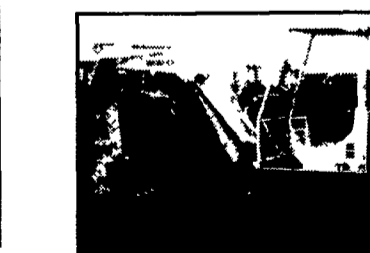
'98 Samsung SE130 \$32,000



Bobcat 325 \$12,500



'99 Kobelco SK150 LC Series IV \$51,000



Takeuchi TB035 excavator, good cond. \$13,500



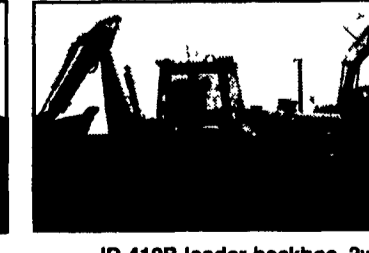
Takeuchi TB025 \$12,500



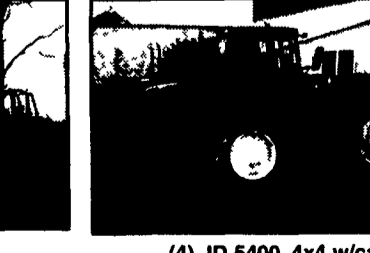
JD 15 mini excavator \$5,500



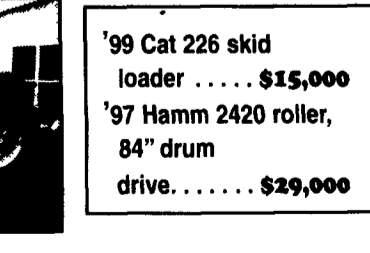
'98 JD 410E, 4x4, E-hoe, 2600 hrs \$32,000



JD 410B loader backhoe, 2wd, extend-a-hoe \$13,000



(4) JD 5400, 4x4 w/cab CALL



'99 Cat 226 skid loader \$15,000
'97 Hamm 2420 roller, 84" drum drive. \$29,000

**• Sales
• Service
• Rental
Repairs**

**WE ARE BUYERS FOR LATE MODEL CONSTRUCTION EQUIPMENT NEEDING REPAIRS
Road Service Available Now, Custom Repairs On All Makes Construction Equipment**