

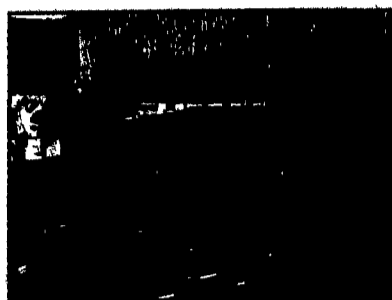
# OUR INVENTORY IS E-X-P-A-N-D-I-N-G Steel and Metal Liquidators

A Subsidiary of Joseph Fazzio, Inc.

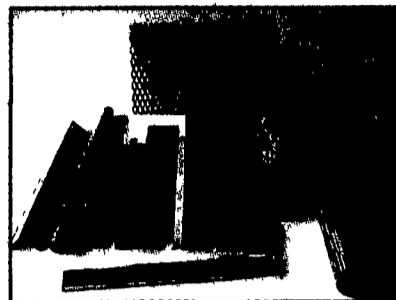
Buyers & Sellers of New & Surplus Steel • Metal Products • Construction Equipment



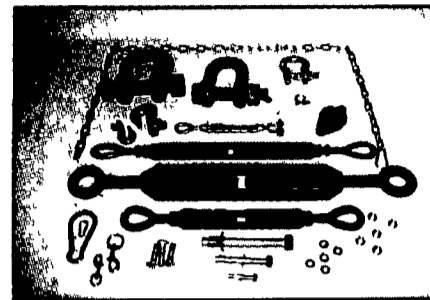
Structural Steel Shapes



Angles, Channel, Plates, Etc



Structural Aluminum Shapes



Residential/Commercial & Industrial Hardware

Structural beams • Shapes • Bars • Plates • Sheets • Grating • Tubing • Pipe  
Industrial Hardware • Tools & Tooling • Pallet Racking • Tube Lock Scaffolding  
Available in...Stainless, Aluminum & Galvanized.

Conveniently Located At:  
407 Old Airport Road New Castle, Delaware

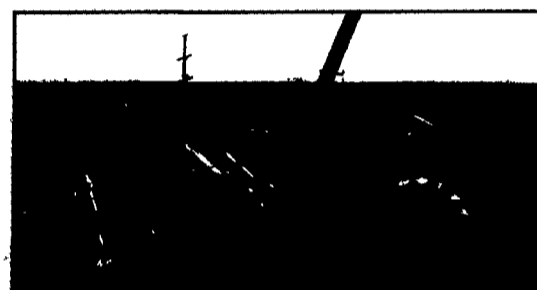
**(302) 322-9960**

Exit 141 South to Exit 4-B

Turn LEFT at Old Airport Road-follow to end

Hours: Mon thru Fri 7:30am to 4:00pm Sat 8:00am to 12:00pm

**LOW PRICES • NO SALES TAX**



Various Construction Equipment Available

- \* Backhoes
- \* Excavators
- \* Cranes
- \* Rollers
- \* Crawler/Tractor/Dozers
- \* Various Model Trucks
- \* Screening Plants
- \* Buckets & Attachments

Financing Available

## TOOLING ACCESORIES

Sold By The Pound

- Cutting Tips
- Caps
- Milling Bits
- Drill Bits
- Nuts, Bolts & Washers

CASE • CATERPILLAR • DEL MAG • FORD • GEHL • GRADALL • HITACHI • HUBERT • HYSTER • INGERSOLL RAND • JOHN DEERE



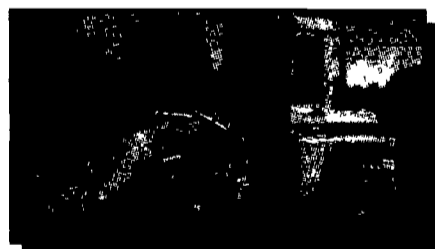
## FAZZIO CONSTRUCTION EQUIPMENT, LLC

A Division of Joseph Fazzio Inc.

Visit our website: [www.josephfazzioinc.com](http://www.josephfazzioinc.com) for entire equipment & product line (856) 881-3185



NEW 2001 (Never Used) MITSUBISHI FE-SP Concrete Mixers, 1-1/2 yd hydraulic mixers, 5 speed trans., diesel engine, 14,500 GVW truck, includes 3 year warranty (10 avail) . . . . . \$24,500/ea



MITSUBISHI Model WS4000 Mini Rubber Tire Loader, s/n 3W100472, 4 cylinder diesel engine, EROPS, cab, 3/4 yd bucket, pin on fork attachment, 5860 hours . . . . . \$10,900



1993 KOMATSU Model PC70-6 Mini Excavator, s/n 34414, Komatsu 4 cyl diesel, 5'9" stick, 24" bucket, 90% u/c, 18" grouser, air cond., 3rd valve plumbed, includes Rock Ram Model 685 Hammer, 3347 hours . . . . . \$25,900



NEW Thumbs - fit 5,000 to 100,000 size machines \$299 to \$1,900 each (Quantity Discounts Available), NEW HEAVY DUTY Gravel Boxes -7 cu yd = \$3,890/ea, 8 cu yd = \$4,200/ea, 9 cu yd = \$5,000/ea

- Caterpillar
  - Case
  - Hitachi
  - John Deere
  - Kobelco
  - Komatsu
  - Mitsubishi
  - Thomas
- More Available

- |   |                             |                           |
|---|-----------------------------|---------------------------|
| Air Compressors                                 | Mobile Rubber Tire          | Screening Plants          |
| Asphalt Rollers                                 | Excavators                  | Shear w/Excavators        |
| Backhoes  | Motor Graders (inc. mini's) | Skid Steer Loaders        |
| Cranes (various models)                         | Motor Scrapers              | Skidders                  |
| Crawler/Loaders                                 | (Pneumatic & Solid Tires)   | Sweepers                  |
| Crawler/Tractor/Dozers                          | Pumps                       | Tractors                  |
| Dirt Rollers                                    | Rubber Tire Loaders         | Trailers (various models) |
| Excavators (inc. mini's)                        | (inc. mini's)               | Trench Compactors         |
| Forklifts (Rough Terrain/Telescopic/Generators) | Hyd. Excavators             | Trenchers                 |
| Manlifts (Scissor & Telescopic)                 | Winches                     | Trucks (various models)   |
|   |                             | Welders                   |

**A Machine for Every Budget!**

**STRUCTURAL STEEL PRODUCTS**  
BEAMS • METALS • PLATES  
INDUSTRIAL HARDWARE • BOLTS  
TURNBUCKLES • SHACKLES

**METRIC PIN SHAFT**  
FOR EXCAVATORS/LOADERS/DOZERS/BKTS & ATTACHMENTS  
4140 Grade, Ground, Turned, Polished & Annealed

SIZES	\$ price per ft cut to your length quoted on request plus sawing	Ordering \$ per ft/15-20 ft. random lengths	Weight per ft in pounds
65mm = 2.558"	\$29.00/ft	\$25.00/ft	16.7
70mm = 2.755"	\$32.00/ft	\$30.00/ft	20
80mm = 3.149"	\$42.00/ft	\$38.00/ft	27
90mm = 3.543"	\$53.00/ft	\$47.00/ft	33
100mm = 3.937"	\$64.00/ft	\$57.00/ft	42

NEW HOLLAND • TCM • TROJAN • TRAVERS • VERMEER • YALE • CASE • CATERPILLAR • CLARK • DEL MAG • FORD • GEHL • GRADALL

HITACHI • HUBERT • HYSTER • INGERSOLL RAND • JOHN DEERE • KOBELCO

KOBELCO • KOEHRING • KOMATSU • LIFTIT • LINK BELL • MITSUBISHI