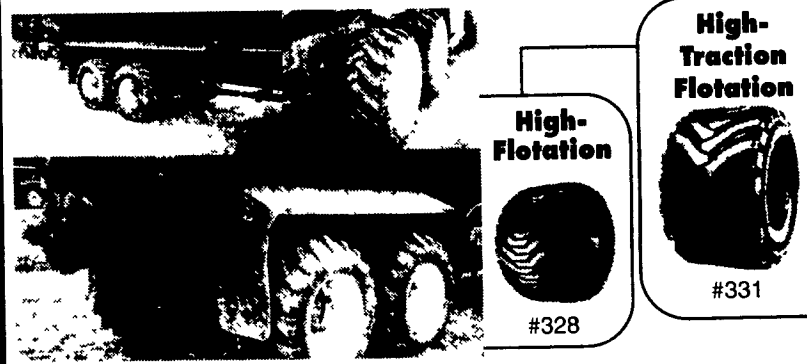


1985 LN8000 with rebuilt 3208 Cat engine, 10 speed Roadranger. 2000 gallon Lely septic tank. Hoses included, Excellent Condition
Call (215)348-2123

We make trucks work in the field with **ALLIANCE** flotation tires



High-Flotation

#328

High-Traction Flotation



#331

CUSTOM HEAVY DUTY WHEELS & TIRES FOR SPOKE OR BUDD HUBS. WE CAN MAKE WHAT YOU WANT!

Diller Equipment **800-640-4448**

Somerset & Chambersburg, PA **814-629-9893**

Stop Spinning Your Wheels, Call Us Today!

www.useddieseltruck.com

CHECK IT OUT

Meadowbrook Auto Sales
 875 Abbottstown Pike, Hanover, PA
717-632-9600 717-633-5789



1994 Dodge Ram 2500

Laramie SLT
 Cummins Diesel, A.T., P.S., PB, Air Cond., Cruise Control, Tilt Wheel, PW, PDL, 142k

Only \$8,900



1994 Ford F-250 Ext. Cab

7.3 Turbo Diesel, Automatic PS, PB, Air Cond., Cruise Control, Tilt Wheel, PW, PDL, 126,000 Miles

Only \$9,900



1999 Dodge Ram 2500

Laramie SLT 4x4
 V8, A.T., P.S., PB, Air Cond., PW, PDL, Tilt Wheel, Cruise Control, 47,000 Miles

Only \$15,900



1998 Dodge Ram

Ext. Cab 2500 4x4
 Cummins Diesel, A.T., P.S., PB, Air Cond., Tilt Wheel, Cruise Control, 163,000 Miles

Only \$14,900



1995 Dodge Ram 2500 4x4

Cummins Diesel, A.T., P.S., PB, AC, Cruise Control, Tilt Wheel, 94,000 Miles

Only \$13,900



1995 Dodge Ram 2500 4x4

Cummins Diesel, A.T., P.S., PB, Air Cond., Cruise Control, 160K

Only \$10,900



1999 Dodge Ram 3500

Ext. Cab 4x4 Dually
 Cummins Diesel, A.T., P.S., PB, Air Cond., Cruise Control, Tilt Wheel, PW, PDL, 82,000 Miles, Super Nice Condition

Only \$22,900



1999 Ford F-350 Ext. Cab

4x4 Dually
 7.3 Powerstroke Diesel, A.T., P.S., PB, Air Cond., Tilt Wheel, Cruise Control, PW, PDL, Cloth Interior, Super Clean, 161K

Only \$18,900



1998 Chevrolet

12 Ft. Dump Stakebody, 350 V-8, Automatic, P.S., PB, Air Cond., Tilt Wheel, Cruise Control, Dual Rear Wheels, 25,000 Miles

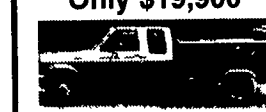
Only \$19,900



1986 Ford F-250

Ext. Cab, 6.9 Diesel, A.T., P.S., PB, Air Cond., Tilt Wheel, Cruise Control, PW, PDL, 179K,

Only \$5,900



1997 Ford F-350 Utility

Truck Ext. Cab
 7.3 Powerstroke Diesel, A.T., P.S., PB, Air Cond., Dual Rear Wheels, 116,000 Miles

Only \$14,900



Stepvans - All Aluminum,

10 ft. to 16 ft. Single Rear and Dual Rear Wheels, Aluminum & Manual Trans., 4 Cyl. & 8 Cylinder Diesels, 1350 Gas, Service Records for Most Many to Choose from

Starting at \$3,000.00



2000 Ford F-250

Ext. Cab XLT,
 7.3 Powerstroke Diesel, 6 Speed, PS, PB, A/C, PW, PDL, Tilt Wheel, Cruise Control, 98,000 Miles, Real Nice Condition,

Only \$21,900



1996 Ford F-250

Ext. Cab 4x4,
 7.3 Powerstroke Diesel, 5 Spd, PS, PB, A/C, PW, PDL, Tilt Wheel, Cruise Control, 138,000 Miles. Super Nice condition

Only \$15,900



1999 Ford F-250

Ext. Cab XLT 4x4,
 7.3 Powerstroke Diesel, A.T., P.S., PB, Air Cond., Tilt Wheel, Cruise Control, PW, PDL, Super Nice Condition, 134,000 Miles

Only \$20,900



1984 Chevrolet

12 Ft. Cubevan,
 A.T., P.S., PB, Dual Rear Wheels, Aluminum Body, 153,000 Miles

Only \$3,900



2001 Dodge Dakota

Quad Cab Sport 4x4,
 V-8 AT PS, PB, Air Cond., Cruise Control, Tilt Wheel, PW, PDL, 86,000 Well Maintained Miles

Only \$15,900



1987 GMC 12 Ft Stepvan,

350 V-8, A.T., P.S., PB, Dual Rear Wheels, New Inspection 150,000 Miles, Nice Condition

Only \$3,900



1995 Dodge Ram 3500

Ext. Cab Dually 4x4,
 Cummins Diesel, A.T., P.S., PB, Air Cond., PW, PDL, Tilt Wheel, Cruise Control, 151,000 Miles

Only \$14,900



131 Kline Rd., Bethel, PA 19507
 We're Located Right On I78 @ Exit 17

WE BUY TRUCKS!

717-933-9792

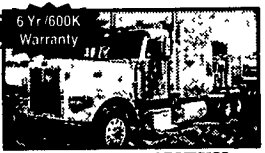
Fax 933-9782 www.besttrucks.net



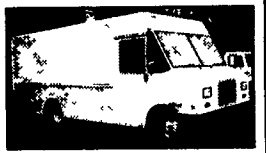
1996 International 4700 16' Reefer, DT466-210hp 5 Speed, 282K Miles, 25 500 GVW, Hydraulic Brakes, Carrier Transcold Cools to 10 Degrees Morgan Aluminum Body
\$12,500 TH248160



1996 Volvo WG42T Single Axle Daycab, Cummins M11 280hp, 10 Speed, Spring Ride, 33 000 GVW, White, AC, 264K Miles, Former Lease Unit
\$13,900 TN843440



(2) 2000 Pete 379EXH 63" Ultracab Cat 3406 475 Hp RTLO 10 Speed, 360K/440K Miles Blue, 10 Aluminum Wheels, Jake Brake, LP22 5 All New Michelin Tires & Brakes 80%
Starting At \$46,500 YD480744



1995 GMC 16' Stepvan, 6.5L Diesel, 5 Speed, 1000 GVW, White, 123K Miles, Trade terms, From leasing Company
\$6,900 S250114



1996 FL70 24' Flat Bed, Cummins 8.3-250hp, 6 Speed, 167K Miles, 33000 GVW, Air Brakes, AC, 24' Covered Wagon, Railgate, Green Spring Suspension
\$12,900 TL638633



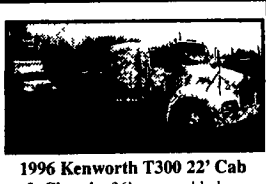
1999 4700LP 10' Dump, Diesel 190hp, Allison Automatic 63K miles White, AC, Will Haul 6 1/2 Ton Payload Pintle Hitch
\$25,900 XH675098



1998 GMC HiCube 15' Van, 6.5L Diesel, Automatic, 10,000 GVW, AC, White/Yellow, 137K Miles, 2 Bucket Seats, Walk Through Door Area
\$9,900 W1067588



1996 Classic XL Detroit 60 series, 500 Hp, 13 Speed, 640K Miles, Jake Brake, Rods/mains 60K ago, 10 Alum wheels, Metallic Blue, Fat Boy Seats, 70%+ tires & Brakes
\$25,900 TA796758



1996 Kenworth T300 22' Cab & Chassis, 36' removable box sleeper Cummins 8.3 250hp, 9 speed 160K miles, AC, 3 90 rears, 33000 GVW,
\$16,000 TM684233



1999 GMC 3500HD 10' Dump Gas, Automatic, 21K Miles, White AC, 15000 GVW, Mason Dump, Fold Down Sides, Bench Seat
\$19,000 XF039199



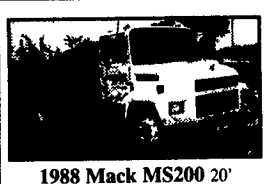
(2) 1999 Mack CH612 Single Axle Condo Sleepers E7 310 330 Hp Mack Rears Air Ride Eaton 9 Speed, Jake Brake, Cruise 600K Miles Virgin Tires Maroon
\$16,900 XW015281



1998 FL70 18' Stake Side Flat Bed, Cummins 5.9 190 Hp 5 Speed 25 500 GVW, Hydraulic brakes 144K miles, Has rack over cab and attachments for 2 level stacking,
\$15,500 WH915959



1996 FLD12064ST Tandem Daycab, Detroit 12.7-400Hp, 9 Speed, 342K Miles, Wet Line, 10C Transmission, 204" Wb, 4 11 Rear Ratio, Jake Brake
\$15,500 TL867767



1988 Mack MS200 20' Flatbed, Diesel, 5 Speed, Air/Hyd Brakes, Under CDL, 213K Miles, 11R22.5, White, Current MD Inspection, Steel Flat Bed,
\$4,500 JB001839



(2) 1999 Freightliner FLD 12064ST 70' Condo's, Cat 12-410hp, 10 Speed, Air Ride, Ave 570K Miles, Gray, Double Bunk, Alum Steers, AC, Jake Brake
\$19,900 ea. XL988131



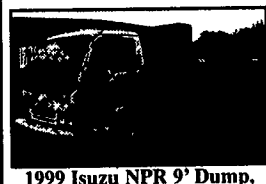
1989 IHC 1754 22' Moving Truck, DT466 210 Hp 5 Speed 177K Original Miles Under CDL Air Brakes White 2 Roadside & 2 Curbside Doors
\$5,900 XH614570



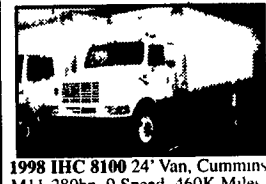
1998 Volvo VNL42T Single Axle Daycab Cummins M11 370 Hp RTLO 10 Speed, Air Ride Suspension & Cab 24" P Tires Jake Brake Aluminum Wheels Red Ave Miles 80K Very Clean
\$18,500 VN750455



1997 FLD12064ST Tandem Daycab, Detroit 12.7 430Hp 9 Speed 726K Miles White, Air Ride & Cab 190 Wb 3 90 Ratio Jake Brake 90% Rear Caps VERY NICE
\$16,750 VL757880



1998 Isuzu NPR 9' Dump, DSL 175hp, 5 speed 84K miles White 14500 GVW, Spring ride ROOM FOR TOOL BOX!
\$16,900 X7015636



1998 IHC 8100 24' Van, Cummins M11 280hp 9 Speed, 460K Miles White 33 000 GVW, AC Spring Suspension
\$15,900 WH25227