

350 TRUCKS / TRAILERS



1995 International 4700 low profile, original owner, 61,000 orig. miles. Never seen snow or salt. Only used to pull my 4-horse trailer. T444E eng. (Ford powerstroke 7.3), 5 speed spicer, under CDL, hydraulic disc brakes. Loaded! Air ride, air ride seats (2), AC, cruise, tilt wheel, PW, Power Locks, \$10k in chrome, stainless & aluminum. \$7k double Eagle sleeper. Incredible show truck, sadly for sale. Sorry to see my "baby" go. Ultimate gooseneck hauler or would make great landscapers dump. **\$25,000 obo.**

Call Michael 908-832-1400 or 908-229-1182

Woodcrest Motors

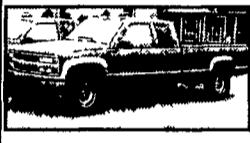
SPECIALIZING IN TRUCKS & VANS
1200 North Reading Rd., (Rt. 272) Stevens, (Lancaster Co.) PA 17578
717-336-3130



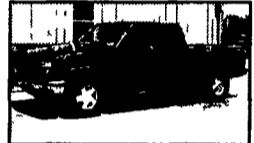
95 CHEV 2500 CHEYENNE 4x4
5.7 V8 AT, A/C, Cass. Stereo 62,000 Miles Bronze
\$11,500



00 DODGE DAKOTA SPORT
Crew Cab 4x4 V8 AT, A/C, Dk. Green 76,000 Miles
\$13,995



98 CHEV 2500 SILVERADO EXT. CAB
4X4 6.5 Turbo Diesel AT, A/C. Most Options, Stereo w/CD Player. 8600 GVW. Green & Tan. 80,000 Miles
\$15,500



99 GMC CLASSIC 1500 SIERRA SLE
Ext Cab 3 Dr 5.7 V8 AT, A/C CD Player. Most Options Meadow Green. 70,000 Miles
\$13,995



99 FORD RANGER EXT. CAB 4-DR.
XLT 4x4 V6 AT A/C, Stereo, Cass., Dk Blue. 78,000 Miles
\$10,300



99 CHEV SILVERADO 1500 LS
Ext Cab, 4x4 3 Dr 5.3 V8 AT A/C Most Options Z. 71 Green 80,000 Miles
\$15,500

Invitation to Bid

Sealed bids will be received by Warwick Township, 315 Clay Road, PO Box 308, Lititz, PA 17543-0308 until 2 30 p m , Wednesday, November 12, 2003 at which time bids will be opened and read publicly for the sale of the following equipment formerly used by the Township

1983 Ford L-8000 Dump Truck, CAT 3208 Diesel Engine-210 HP, Allison MT-653 Automatic Transmission, 36,000 Lb. GVWR, 63,750 Miles, Steel Dump Body, Crankshaft Driven PTO, Central Hydraulic System, Cab Mounted Strobe Light, Under Tailgate Salt Spreader, 11' Walk Snow Plow w/Power Angle, AM/FM Radio, Color-Yellow, Overall Condition-Good.

All proposals must be in sealed envelopes and must be clearly marked as "Bid for 1983 Ford Dump Truck" The truck will be sold as is and can be seen at the above listed address, Monday through Friday from 7 00 a m until 3 30 p m

Proposals must be submitted upon the forms furnished by the Township The bid(s) must be accompanied by a certified check or bid bond in the amount of 10% of the bid and made payable to Warwick Township This amount will be refunded upon full payment for the dump truck or if bid is not accepted Warwick Township reserves the right to reject any or all bids

Daniel L. Zimmerman
Township Manager



1985 International Cargo Star, 192,000 Miles, 22,500 GVW, 7.3L Diesel, Auto, Cab & Chassis



1994 International, Cab & Chassis, DT 466, 210 HP Eng , 6 speed Trans , AC, PS, Full Air Brakes, Looks new & Runs New! 33,000 GVW

1985 International 1754, 90L Diesel, 180 HP, 18' Morgan Reefer Unit, 28,000 GVW, 462,000 Miles, 5/2 Trans



Phone 717-664-1696
CHARTER ENTERPRISES, LTD.
270 Hostetter Road, Manheim, PA

TRUCK TIRES

- Used Truck Tires
- Authorized Cooper Tire Dealer
- Good Supply of Retreads In Stock, Or We Can Custom Retread Your Own Tires To Meet Your Hauling Needs.
- Eliminate the Middleman and Buy Direct from our Retread Shop and Save \$\$!
- Our Family Business Has Been Retreading Tires for Over 35 Years.

We Know How To Do It Right!



WEAVER'S TIRE SERVICE

Ephrata, PA

Drive On. 717/733-8775

AVALANCHE SNOWPLOWS



QUALITY COSTS LESS IN THE LONG RUN!

E.M. Kutz Truck & Equipment
1-800-974-9779

CUSTOMER SERVICE IS #1



Truck & Trailer Parts & Accessories
Distributor

7760 Allentown Blvd.
Harrisburg 717-671-9115

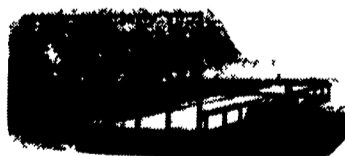
6250 Carlisle Pike
Mechanicsburg 717-795-9116

Parts/Orders Only 800-622-7003

A.R.E. TRUCK CAP & LIDS • TRUCK ACCESSORIES

SHUR-TRAIL

LANDSCAPE TRAILERS



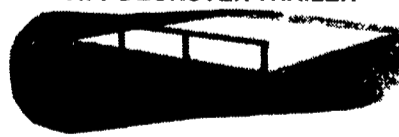
- | STANDARD FEATURES | OPTIONS |
|---|--|
| <ul style="list-style-type: none"> • 3,000 lb GVW (Single Axle Models) • 7,000 lb GVW (Tandem Axle Models) • 5 LUG, 14" C Range Bias Tires • 2" Coupler with Jack (3,000 lb GVW) • 2.5/16" Coupler with Jack (7,000 lb GVW) • Brakes both Axles (7,000 lb GVW) • Breakaway Kit (7,000 lb GVW) • 3" Channel Tongue (3,000 lb GVW) • 4" Channel Wrapped Tongue (7,000 lb) • 3" x 2" Angle Frame + Crossmembers • 4" Mesh Ramp • 2" x 8" Treated Floor • Sealed Beam Lighting | <ul style="list-style-type: none"> • Deck Sizes 3,000 lb GVW 5'x8', 5'x10', 6'4" x 10', 6'4" x 12', 6'4" x 14' • Deck Sizes 7,000 lb GVW 6'6" x 10', 6'6" x 12', 6'6" x 14', 6'6" x 16', 6'6" x 18', 6'6" x 20' • 82" Deck (7,000 lb GVW) • 84" Deck (7,000 lb GVW) • Radial Tires • Spare Tire + Wheel • EZ Lube Axles • Choice of Color (Black or Red) |

SKIDLOADER TRAILER



- | STANDARD FEATURES | OPTIONS |
|--|--|
| <ul style="list-style-type: none"> • 10,000 lb GVW (5,200 lb Axles) • 12,000 lb GVW (6,000 lb Axles) • 6 Lug, 15" D Range Bias Tires (10,000 lb) • 8 Lug, 16" E Range Radial Tires (12,000 lb) • 2.5/16" Adjustable Coupler • 10,000 lb Dropleg Jack • 4" Drop Axles With Slipper Springs • Brakes Both Axles • Breakaway Kit • Diamond Plate Fenders + Backs • 6" Channel Frame + Tongue | <ul style="list-style-type: none"> • 4" Channel Crossmembers • Stake Pockets + Rub Rail • 5" Ramps • Sealed Beam Lighting • 2" x 8" Treated Floor • 82" Deck (Between Fenders) • Deck Length (14', 16', 18') • Radial Tires (10,000 lb) • Spare Tire + Wheel • EZ Lube Axles • Pintle Hitch • Choice of Color (Black + Yellow) |

ATV DECKOVER TRAILER



- | STANDARD FEATURES | OPTIONS |
|--|--|
| <ul style="list-style-type: none"> • 3,000 lb GVW • 3,000 lb Axle (100" Single Axle Model) • 2,000 lb Axle (148" Tandem Axle Model) • 5 Lug, 10" Bias Tires • 2" Coupler with Jack • 3" Channel Frame + Tongue • 2" x 2" Angle Crossmembers • Stake Pockets + Rubrail on 3 Sides | <ul style="list-style-type: none"> • 5/4" Treated Floor • 4 Slide Under Ramps That Hook Anywhere on Three Sides • 84" Deck Width • Sealed Beam Lighting • Deck Length (100" + 148") • Spare Tire + Wheel |

CAR HAULER



- | STANDARD FEATURES | OPTIONS |
|--|--|
| <ul style="list-style-type: none"> • 7,000 lb GVW • 3,500 lb Axles • 5 Lug, 14" C Range Bias Tires • 2.5/16" Coupler with Jack • Brakes on Both Axles • 78" Deck (Between Fenders) • 3" Channel Frame + Tongue (14') • 4" Channel Frame + Tongue (16'+18') • 1/8" Diamond Plate Decking | <ul style="list-style-type: none"> • 5 Ramps (16'+18')—4 Ramps (14') • Sealed Beam Lighting • Breakaway Kit • Open or Closed Deck • Deck Length (14' 16', 18') • 84" Deck (Between Fenders) • Radial Tires • Spare Tire and Wheel • EZ Lube Axles |

TRAILER PARTS • SERVICE • FABRICATIONS • STATE INSPECTION

DRAW-TITE HITCH & TOWING PRODUCTS • AIR RIDE HITCHES • TOOL BOXES

TONNEAU COVERS • BEDLINERS • SNOWPLOWS • POWER MIRRORS