

15 CONSTRUCTION EQUIPMENT

Forklift - 97 Big Joe mdl. PDM-30-154, 3,000 lb., lift height 154", elec. - 110 v., self contained battery charger, \$2,500.
717-432-3235

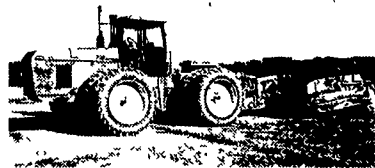
Jonestown Ag Repair & Supply Store

170 Old Rt 22 Jonestown, PA 17038
 Darwin Weaver
717-865-0135 fax 717-865-0322



Large selection of Interstate Batteries

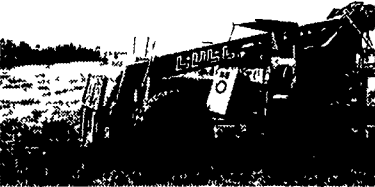
Mystik Lurcants * Roller chains
 * Custom made hydraulic hoses
 * Napa Belts & Filters
 * Hardware Skid loader attachments available
 * Galaxy Skid loader ties & other brands
 Complete Skid Loader Repairs Our Specialty
Our store replaces Skirkville Farm Supply



JD 8870, PS Duals 350 HP with 99 Reynolds 17 Yd Pan \$70,000



Bomag BW210 84 Vibratory Roller \$16,000



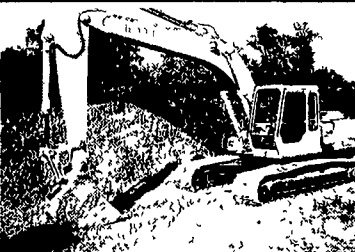
94 Lull 644 Forklift 34 Reach **SOLD \$21,500**



99 Vermeer Mdl V-3550A, Trencher, 4x4 Diesel Backfill Blade Only 575 Hrs \$11,500



JD 670 Grader, Scarifier 12 Blade Exc Cond \$18,000



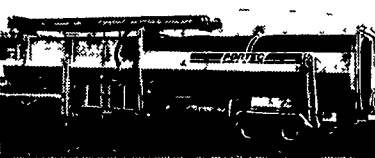
Hitachi EX 200 Excavator \$26,000



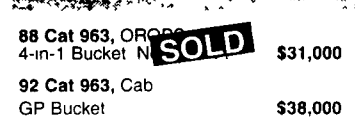
94 Gradall 544 Forklift, 10 000 lb Capacity 48 Reach w/Forks Bucket, Truss Boom \$33,000



03 Komatsu PC200-7, New and Unused AC 32 Shoes 40 Bucket \$99,500



94 Portec 7221 Trommel Greener, Cummins Diesel Conveyor 2 Sets Screens **SOLD \$38,000**



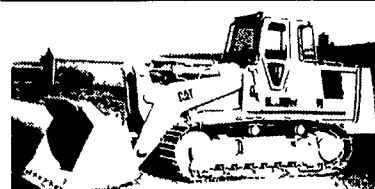
88 Cat 963, OROPS 4-in-1 Bucket **SOLD \$31,000**



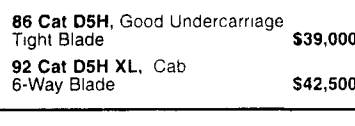
88 Kenworth T600 \$10,000



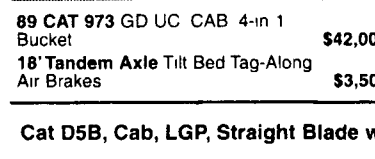
86 Cat D5H, Good Undercarriage Tight Blade \$39,000



92 Cat D5H XL, Cab 6-Way Blade \$42,500



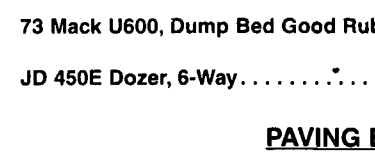
99 ASV Positrack MD 2810, 860 Hrs \$21,000



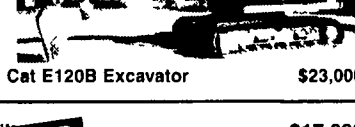
89 CAT 973 GD UC CAB 4-in 1 Bucket \$42,000



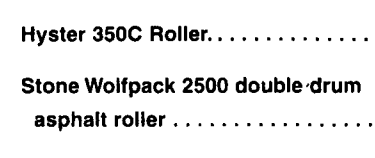
99 ASV Positrack MD 2800 CALL



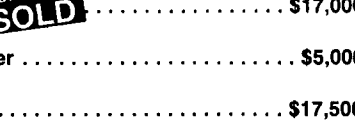
JD 450E Dozer, 6-Way \$17,500



96 ASV Positrack MD 2810 1 280 Hrs 4 in 1 Bkt \$19,000



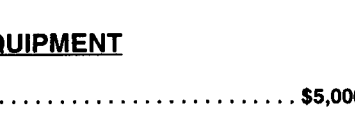
Hyster 350C Roller \$5,000



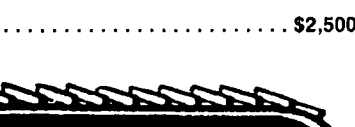
01 ASV Positrack 4810, 1 060 Hrs \$26,000



Stone Wolfpack 2500 double-drum asphalt roller \$2,500



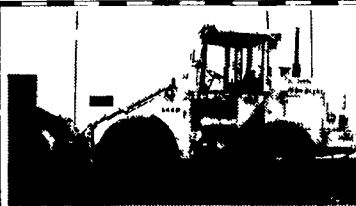
Bomag BW212D, 1 900 Hrs Canopy 84 Drum Drive \$29,000



91 IR DD-22, 39 Double Drum Asphalt Roller \$7,500

PAVING EQUIPMENT

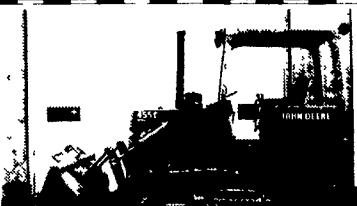
Weaver's Equipment Sales
 RD#1, Box 418, Milton, Pa. 17847
 Phone: 570/523-9598



86 JD 544D, Cab 4 750 Hrs 80% Tires \$21,000

83 JD 544C, Cab 6 220 Hrs 50% Tires Quick Attach \$19,000

75 JD 644B, Cab 6 300 hrs 50% Tires 4 in-1 Bucket \$13,500



97 JD 455G V, ROPS 4,900 Hrs 60% UC, 3rd Valve New Paint \$25,000

99 Takeuchi TBO14, ROPS 1 275 Hrs Rubber Tracks Backfill Blade \$9,750

95 JLG 40HA, 2 675 hrs 80% Tires 4x4 40 Ft Reach \$12,500

95 Case 580 SL, Cab 4,160 Hrs 4x4 Ext Hoe CALL

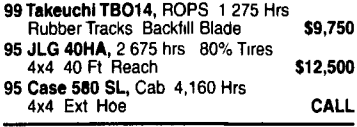


94 Linkbelt LS 2700C-2, 3 850 Hrs Manual Quick Copler Good Cond \$33,000

87 MDI Yutani, MD300 5580 Hrs, 32 Shoes 10 Stick \$18,000



97 Cat D6M XL, 9 460 Hrs 6-way blade, fingertip steering \$62,500



1993 Cat 963 cab, 11 500 Hrs \$49,000

87 Cat 963, OROPS 5,970 Hrs, 75% UC \$34,000

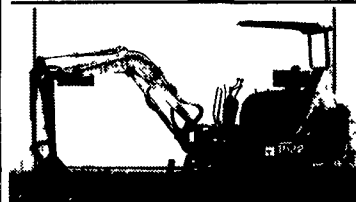
85 Cat 963, OROPS Good UC GP Bucket 70% UC \$29,000



01 Cat 246, 410 Hrs nice cond \$19,500

00 Cat 236, 1 280 Hrs, Track, Buckets & Forks \$17,500

97 NH LX865, 1 520 Hrs \$10,900



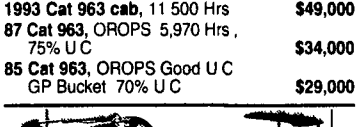
97 Komatsu PC20R-8, 2 260 Hrs Rubber Tracks w/Blade \$12,000

94 Komatsu PC20-7E, 2 425 Hrs Rubber Tracks w/Blade \$10,000

96 Komatsu PC207-E, Canopy 2 644 Hrs Rubber Tracks w/Blade \$10,500

91 Komatsu PC25, Canopy 4 900 Hrs Rubber Tracks w/Blade \$10,000

94 Komatsu PC20-7 Canopy 2 830 Hrs Rubber Tracks w/Blades \$9,500



97 Komatsu PC40R-8, 2 523 Hrs Steel Tracks w/Blade \$16,000

98 Komatsu PC40R-8, 3 320 Hrs Rubber Tracks w/Blade \$15,000

98 Komatsu PC40MR-1, 3 790 Hrs Steel Tracks w/Blade New Paint \$18,000

93 Komatsu PC40-7, 4 285 Hrs Rubber Tracks w/Blade \$13,000

92 Komatsu PC40-7, 4 420 Hrs Rubber Tracks w/Blade \$13,000

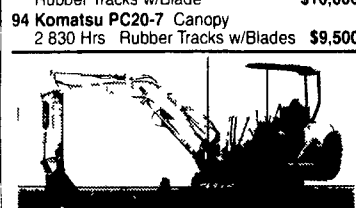


98 Komatsu D41P-6LGP 5 320 Hrs 75% UC 6 Way Blade \$33,000

86 Fiat Allis FD5, OROPS 5 000 Hrs 6-Way Blade \$15,500

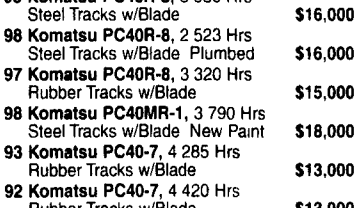
87 Fiat Allis FD5, Canopy 60% UC \$13,500

81 Dresser TD12, Canopy 80% UC Straight Blade w/Tilt \$24,000



96 Komatsu PC35R-8, Canopy 2 280 Hrs Rubber Tracks w/Blade \$14,500

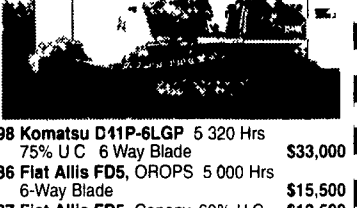
96 Komatsu PC35R-8, 2 270 Hrs Rubber Tracks w/Blade \$14,000



94 Hitachi EX-120-3, Cab 5 560 Hrs 28 Shoes Plumbed \$28,000

95 JD 590D, 5 500 Hrs New Paint \$36,000

84 JD 490, 28 Shoes 8 10 wide 9 10' stick \$14,900

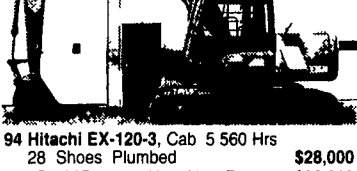


83 Cat 615, Cab, 75% Tires, Self-Loading Good Chains \$36,000

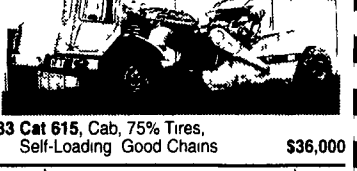


80 Link Belt LS3400, Joy Stick Controls 10 4 W 53 000 Lb \$12,500

87 MDI Yutani, MD300 5 580 Hrs 32 Shoes 10 Stick \$18,000



00 Bomag BW202ADH-2 Tandem, Vibratory, Smooth Drum Asphalt Roller 1 745 Hrs Water System \$26,000



95 Komatsu PC60-7, Cab 4 660 Hrs Steel Tracks w/Rubber Pads \$23,500

95 Hitachi EX60-3, Cab, 3 445 Hrs Steel Tracks, New Paint \$18,000

Cat D5B, Cab, LGP, Straight Blade w/ **SOLD \$17,000**

73 Mack U600, Dump Bed Good Rubber \$5,000

91 IR DD-22, 39 Double Drum Asphalt Roller \$7,500

97 Terex SS636, 1855 Hrs, 6 000 Lb Lift \$27,000

97 Harlo H300B, Forklift 830 Hrs 4000# Lift, 21' Mast \$13,500

94 Komatsu PC75UU, 4900 Hrs \$19,000

93 Komatsu PC75UU, Canopy 3600 Hrs Rubber Tracks w/Blade \$16,500

Voivo 825B Articulated Truck, 6x6 \$36,000

79 JD 850, OROPS Angle Blade \$17,000

Komatsu 30 Forklift, 6 600 lb Lift Gas Eng \$7,000

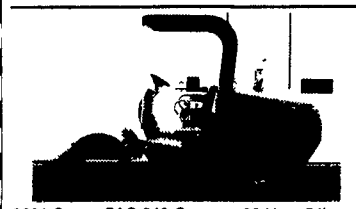
88 Ford F350 Dually, Mechanics Body Crane Electric Lift Gate New Motor New Tires \$6,900

88 Cat 953, Cab 90% UC \$39,500

88 Cat 953, Cab 50% UC New Paint \$38,000

88 Cat 953, Canopy 75% UC \$32,000

88 Case 1155E, Canopy 5 787 Hrs 50% UC \$17,500



2001 Super PAC 540 Canopy, 82 Hrs 54' Drum Drive \$23,000

97 Ingersoll Rand VR60B, 2180 Hrs, 40% Tires, 6000 lb Lift 35 Reach \$27,000

97 Terex SS636, 1855 Hrs, 6 000 Lb Lift \$27,000

97 Harlo H300B, Forklift 830 Hrs 4000# Lift, 21' Mast \$13,500

94 Komatsu PC75UU, 4900 Hrs \$19,000

93 Komatsu PC75UU, Canopy 3600 Hrs Rubber Tracks w/Blade \$16,500

Voivo 825B Articulated Truck, 6x6 \$36,000

79 JD 850, OROPS Angle Blade \$17,000

Komatsu 30 Forklift, 6 600 lb Lift Gas Eng \$7,000

88 Ford F350 Dually, Mechanics Body Crane Electric Lift Gate New Motor New Tires \$6,900

88 Cat 953, Cab 90% UC \$39,500

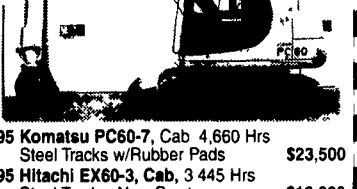
88 Cat 953, Cab 50% UC New Paint \$38,000

88 Cat 953, Canopy 75% UC \$32,000

88 Case 1155E, Canopy 5 787 Hrs 50% UC \$17,500

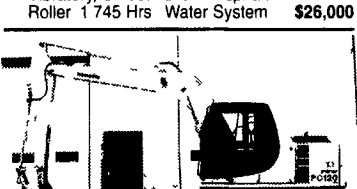


00 Bomag BW202ADH-2 Tandem, Vibratory, Smooth Drum Asphalt Roller 1 745 Hrs Water System \$26,000

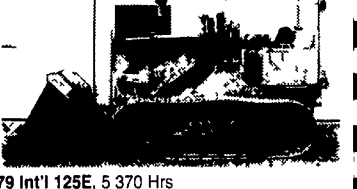


95 Komatsu PC60-7, Cab 4 660 Hrs Steel Tracks w/Rubber Pads \$23,500

95 Hitachi EX60-3, Cab, 3 445 Hrs Steel Tracks, New Paint \$18,000

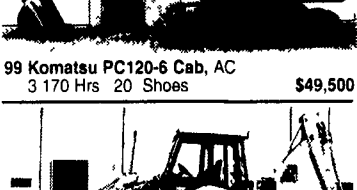


99 Komatsu PC120-6 Cab, AC 3 170 Hrs 20 Shoes \$49,500



79 Int'l 125E, 5 370 Hrs 75% UC \$11,500

74 Cat 931, Rops CALL

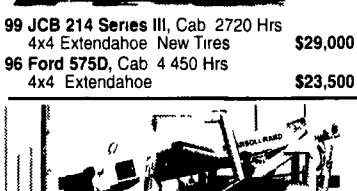


99 JCB 214 Series III, Cab 2720 Hrs 4x4 Extendahoe New Tires \$29,000

96 Ford 575D, Cab 4 450 Hrs 4x4 Extendahoe \$23,500



89 Cat E110B, 5 200 Hrs 3rd Valve W/Plumbing \$21,000

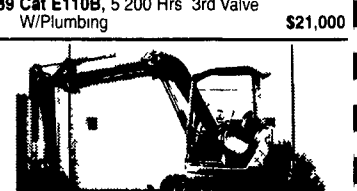


92 Komatsu PC50UU, 3900 Hrs \$9,500

94 Komatsu PC50, UU-2, Cab AC 5345 Hrs Rubber Tracks w/Blade \$14,500

93 Komatsu PC50UU, 3 690 Hrs Rubber Tracks w/Blade \$11,000

96 Komatsu PC50UU-2E, 740 Hrs Steel Tracks w/Blade \$14,500



89 Dresser A450E Motor Grader, Cab Scarifier 14 Moldboard \$19,500

90 Champion 720A 6x6, 14 Moldboard Cab \$24,500

78 JD 670 Motor Grader Call

Weaco Equipment Financing and Lease Purchase Available No Sundry Calls
 4009 Conrad Weiser Parkway, Womelsdorf, PA 19567
 Located 4 Miles East Of Myerstown on Rt. 422 sales@weacoequipment.com
610/589-5555 Toll Free 877/529-9328