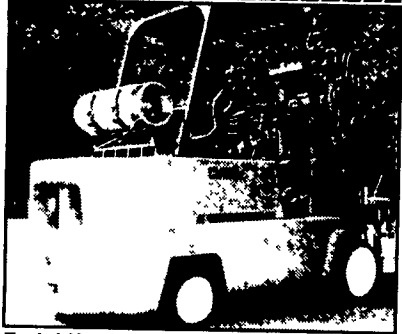


15 CONSTRUCTION EQUIPMENT

Forklift - 97 Big Joe mdl. PDM-30-154, 3,000 lb., lift height 154", elec. - 110 v., self contained battery charger, \$2,500 \$2,250. 717-432-3235



Clark Fork Lift 13,500 lb capacity, new 60" forks, Mast 83-118, power steering, 2 speed auto, Perkins LP, very strong machine **\$8,500**
C. Betz Fork Lift Sales
717-485-0410



WENGER'S OF MYERSTOWN

CONSTRUCTION EQUIPMENT & PARTS

800-552-5080 • Nights 717-272-9583

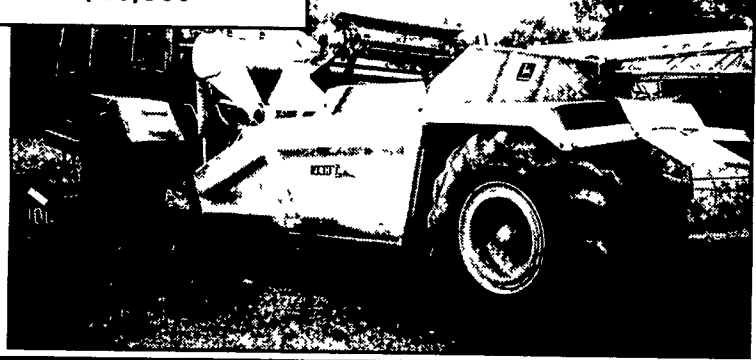
Rt. 501 South Myerstown, PA 17067

HOURS: Mon-Fri • 7 30-5 00 Saturday • 7 30-Noon

www.wengers.com

kbaum@wengers.com

JD 762A Pan \$15,500



JD 670B Cab, Rieder, 1200 Hrs. \$34,500



Equipment Rentals

Contractors, Business Owners, Farmers & Others
You Don't Have To Buy Excavating Equipment For Your Jobs
Rent From Us For Less!



CHIPPERS up to 18"



PAVING ROLLER



TRAILERS



POST HOLE DIGGER



SKID LOADER HAMMER



EXCAVATOR w/HAMMER



BACKHOES



DOZERS



VIBRATORY ROLLERS



LASER GRADERS



DUMP TRUCK HAULING



MINI EXCAVATOR



TRACK LOADERS



EXCAVATORS



SKID LOADERS



REMOTE TRENCH ROLLERS



BACKHOE w/HAMMER



EQUIPMENT TRANSPORTING

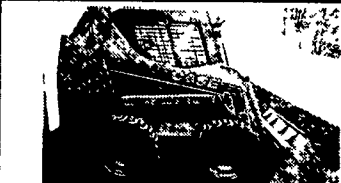
More Machines Being Added, Call For Prices & Availability

STONEY CREEK CONTRACTOR SERVICES

415 Park Road, P.O. Box 327, Fleetwood, PA 19522
610/944-5332 • Fax: 610/944-1562 • 877/944-5332



BUY • SELL • TRADE



2001 CASE 85XT enc. cab, new 72" HD bucket w/bolt on cutting edge & spill guard 4 new big option 14-ply tires, hydro bucket-quick disconnect, aux hydros **VERY NICE, 1160 hrs. ONLY \$18,500**



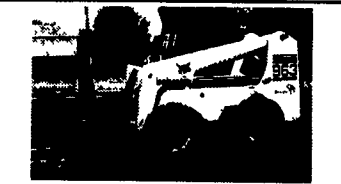
2001 JOHN DEERE 267 enc. Cab w/heat; 2 sp Transmission; like new Loeggering tracks; tires @ 95%; like new construct bucket; 73HP diesel, aux hydros, **LIKE NEW! ONLY 459 hrs. ONLY \$18,995**



2000 BOBCAT 864G Track Loader 74HP Deutz diesel; 80" dirt bucket w/bolt on teeth; tracks @ 35%; 1885 hours; Very Nice - **SALE ONLY \$16,995**



2000 BOBCAT 773, 68" lo-pro bucket, tires @ 90% susp Seat, Power Bobtach; keyless start; 1100 hours, **NICE!! ONLY \$13,500**



2001 BOBCAT 963G cab w/heat; aux hydros; rear weights; bucket & forks; 80" lo-pro; air boss tires @ 75%; 105HP Perkins turbo diesel, 998 hrs; Outstanding Condition **SALE ONLY \$21,995**



'97 JCB 210S, SERIES 2 LDR/BACKHOE 4X4X4, 4WD, 4 wheel steer; tires @ 80%; 4 post ROPS w/canopy; ONLY 1,600 hours; Excellent Condition! SALE ONLY \$17,995



NEW HOLLAND LS170, 2 available; 2000-01; 56HP turbo diesel, lo-pro buckets, Very Nice, 725 & 300 hours. Prices starting at **\$13,795**

NEWPORT, PA
CALL FOR HOURS & DIRECTIONS
ALL EQUIPMENT STORED INDOORS
Visa & MasterCard accepted
717-582-4077 or 717-497-9311



2000 FORD LB75 LDR/BACKHOE, 4WD, cab w/heat, stand hoe - 24" bucket; like new fr. bucket; tires @ 65%; power shuttle; 85 HP diesel, front remotes; 1,600 hrs. 1-owner, **VERY NICE!! ONLY \$25,595**

COMPACT POWER EQUIPMENT, INC.



MIKE ZYNDORF LLC

609/625-8660

609/641-3342 (Evenings)

FAX 609/625-8664

6481 Harding Hwy (Rt. 40) Mays Landing, NJ 08330

Visit us at www.mzequipment.com for our complete inventory

PHOTO COMING

89 Cat D-4C-LGP, Dozer, VG Cond Call for Info



1987 Komatsu Dozer, Model D31P-17, LPG model, 3 spd trans, good u/c \$18,500

Komatsu D20PG-8, canopy, 20" Rubber Tracks, STD Trans, Lever Steer, 6 way blade, VG Cond \$13,900



96 Master Craft, 6000lb capacity, 21' 3 stage mast diesel \$14,900

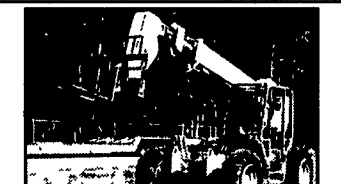


92 John Deere 644E, cab, 23 5x25 Michelin tires, 3 25 cyd., GP bucket w/BOE \$37,500

(2) B50-2 "93 & 94" equipped w/rubber tracks, blade, canopy \$15,500
B27-2 R tracks, blade & cab, offset boom \$16,900
B37-2 R tracks blade & canopy \$12,900



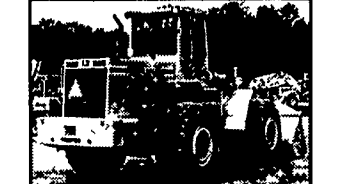
90 Cat E110B, cab, 20 in. pads, 36" bucket, aux, hyd \$25,500



96 JCB 506B, telescopic forklift, 6000lb cap, 4x4, 36' reach \$28,900



93 Hitachi EX100-2 cab, 24 in. steel pads, 36" bucket \$28,900

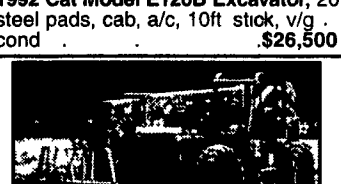


92 John Deere 644E, cab, 23 5x25 Michelin tires, 3 25 cyd., GP bucket w/BOE \$37,500

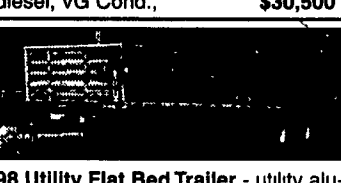
'99 Case 75XT Skid steer, aux hyd \$15,900
'98 JD 455G GP Bucket w/teeth, ps trans, w/tc \$32,900
'94 Hitachi EX55UR - rubber tracks, blade, 0 tail swing, canopy \$15,500
'88 GMC Brigadier water truck, 2300 gal Smith tank, 5 spray heads \$21,900
'94 Simon Manlift MP60, 60' reach, 4x4, diesel \$14,900
'99 IHC 4700, dump truck, p/s, a/c cruise \$22,900
(2)1997 Speciality Light Plants model BT K6-4MH, Kubota diesel, 4-1000 watt bulbs \$2,950 - \$3,250
(1)1994 Amida Light Plant model SL4060D-4MH, Kubota diesel 4-1000 watt bulbs \$2,500
'96 Manitou Rough Terrain Straight Mast 4x4 5000 lb capacity, 21' 3 stage mast, Ford diesel power \$16,900
'98 Ford F700 dump truck, diesel, no CDL needed \$21,500
PC500U-1 - R tracks, blade, art boom, canopy \$13,900
Ditch Witch 255SX Trencher, cable plow, gas powered, 300 hours \$7,900



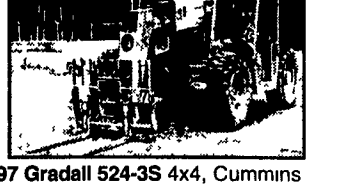
1992 Cat Model E120B Excavator, 20' steel pads, cab, a/c, 10ft stck, v/g cond \$26,500



97 Lull 6K-37 - telescopic lift, JD diesel, VG Cond., \$30,500



98 Utility Flat Bed Trailer - utility aluminum flat bed trailer, 48' long, 96" wide, air ride susp, steel budd wheels. \$9,900



97 Gradall 524-3S 4x4, Cummins diesel, 32' reach, 6,000 lb cap \$24,900



South Jersey New Full Line Eager Beaver Dealer

New rubber tracks available for most excavators Delivery



Financing