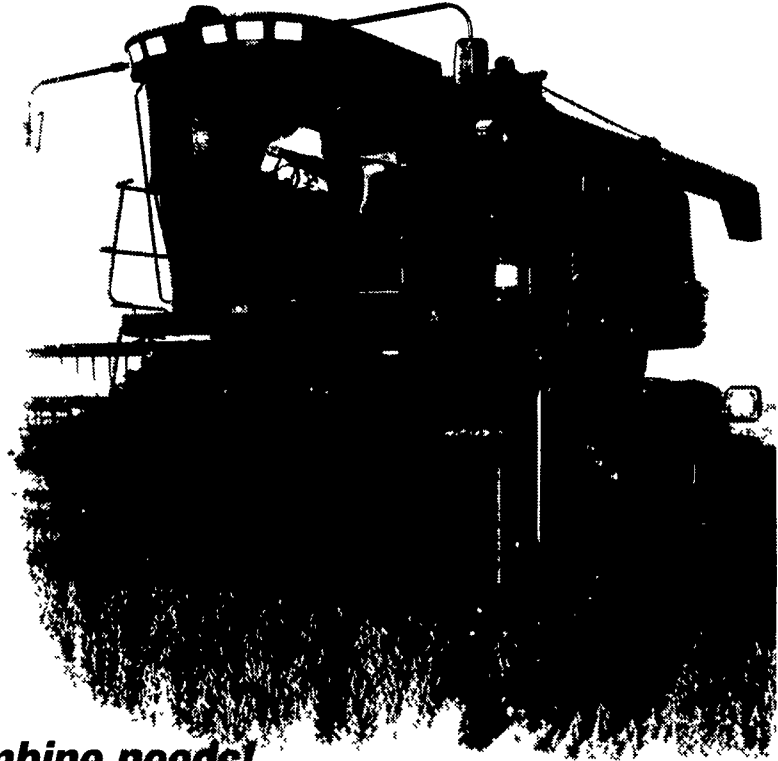


Helping You Through

- **Service** - Hooper has 9 service technicians between the McAlisterville and Intercourse locations that are factory trained to work on Axial-Flow combines. Repairs are made quickly and accurately.
- **Parts** - Transferred between our four locations everyday and we have daily pickups at the Philadelphia parts depot. We will do everything we can to get the parts you need - FAST!
- **Inventory** - Hooper has an excellent selection of locally traded pre-owned combines that are priced to give Mid-Atlantic farmers the best value for their dollar.
- **Financing - 0% Financing Until Sept. 1, 2004 on all used combines and heads!**
- **Experience** - Hooper brought Axial-flow combines to the east in 1977 and our employees have been working with Axial-flow technology ever since. We'll help you get the most from your machine.



UNDER \$20,000

- A 23008 1979 IH 1460 2WD, 3450 Hrs, Std Rotor, w/810 Platform, Tires: Drive
- A 25892 IH 1440
- C 32282 1978 IH 1440 2WD, 4673 Hrs, Hooper Uptime Service Done Recently
- C 42563 1984 IH 1460 2WD, 4207 Hrs, Chopper, Tires: Drive-30.5x32, Steer-

\$20,000-\$50,000

- B 45194 1994 CIH 1688 4WD, 4555 Hours, Chopper, Tires: Dr-18.4x38 Duals
- A 25615 1991 CIH 1660 2WD, 4131 Hrs, Rock Trap, Tires: Dr-30.5x32, St-14.5
- B 42705 1986 CIH 1680 2WD, 3671 Hrs, Chopper, Stand Rotor, 30.5x32 Dr Tires
- C 22724 1988 CIH 1680 2WD, 2654 Hrs, Spec Rotor, Rock Trap, GLM, Tires: D
- D 50215 1989 CIH 1680 2WD, w/1020 Hdr, 3223 Hrs, Tires: Drive-30.5x32, S
- D 43509 1989 CIH 1640 2WD, 3436 Hrs, Specialty Rotor, Auto Header Control,

\$50,000-\$75,000

- B 45881 1996 CIH 2188 2WD, 2079 Hrs
- B 41749 1996 CIH 2188 2WD, 2816 Hrs, Spec Rotor, Rock Trap, GLM, Chopper
- A 44583 1995 CIH 2188 2WD, 3276 Hrs, Spec Rotor, Rock Trap, Chopper, GLM

\$75,000+

- A 26126 2001 GL R62 2WD, 1750 Hrs, Chaff Spdr, Chopper, Tires: Dr-800/65
- D 50543 CIH 2188 4WD, 1575 Hours, Rock Trap, Field Tracker, 20.8x42
- B 45993 1998 CIH 2388 2WD, 1991 Hrs, Specialty Rotor, Tires: Drive - 30.5Lx
- A 25652 1998 CIH 2366, 2143 Hours, Rock Trap, Specialty Rotor, Field Tracker

John Deere Combines

- B 45471 1979 JD 8820 4WD w/Duals, 3709 Hrs, Diesel, Chopper, Rock Trap,
- A 25958 1978 JD 4400, Diesel, 18.4x26 Drive Tires, 11x15 Steer
- B 45535 1991 JD 9600 4WD Combine, 3178 Hours

Call Hooper today for all your combine needs!

Used Tractors

2.75% Financing for 3 Years on Used Tractors!
Financing options subject to change without notice. On most models

OTHER CASE IH TRACTORS

| NO. | YR | MAKE | DESCRIPTION | HP |
|---------|------|------|--|--------|
| B 44938 | 1998 | CIH | MX150 2wd, 1653 Hours, 3 Pt Hitch, 540 PTO, | 130 HP |
| B 44411 | 1992 | CIH | 5140 MFD ROPS, 2020 Hrs, 540/1000 PTO, | 92 HP |
| B 45892 | | CIH | MX100 MFD, | 85 HP |
| A 25078 | 1988 | CIH | 1594 MFD Hops, 2567 Hrs, Mechanics Special, | 85 HP |
| A 26138 | 1991 | CIH | 5120 MFD Cab w/Ldr, 3421 Hrs, 18 4x34 Rr Tires | 77 HP |
| B 45523 | 1989 | CIH | 885 Tractor, 6684 Hours | 72 HP |
| C 32388 | | CIH | 2594 2wd Cab, 5233 Hrs, 20 8x38 Rear Tires | |

INTERNATIONAL TRACTORS

| NO. | YR | MAKE | DESCRIPTION | HP |
|---------|------|------|------------------------------------|--------|
| C 32469 | 1975 | IH | 1466 2WD, 18 4x38 Rear Tires, | 150 HP |
| D 50622 | | IH | 706, | 133 HP |
| B 44761 | | IH | 1066H, 1648 Hours, | 116 HP |
| A 25197 | | IH | 986, 4904 Hrs, | 105 HP |
| C 32483 | | IH | 856 2WD, Diesel, Gear, | 100 HP |
| C 43495 | | IH | 756, 9105 Hrs, 18 4x34 Rear Tires, | 76 HP |
| A 25546 | 1968 | IH | 444, 13 6x28 Rear Tires, 540 PTO | 38 HP |

OTHER TRACTORS

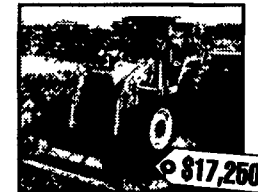
| NO. | YR | MAKE | DESCRIPTION | HP |
|---------|------|------|---|--------|
| B 45709 | 1982 | AC | 608 Tractor/Loader/Backhoe, 3685 Hours | |
| C 32484 | 1977 | Case | 1270 2WD, 2899 Hrs, 20 8x38 Rear Tires, | 137 HP |
| C 32134 | 1984 | Case | 1594 MFD Cab, 3712 Hours, 18 4x34 Rear Tires, | 85 HP |
| D 50390 | | Ford | 5000 2WD Select Shift | |
| C 32432 | 1940 | Ford | 9N, 11 2x28 Rear Tires | |
| D 50625 | 2000 | JD | 5210, 439 Hrs, Just Traded | |
| D 50612 | 1980 | MF | 2745 2WD, 2840 Hrs, 20 8x38 Rear Tires | 143 HP |
| B 44409 | | NH | 8970 MFD Cab, 1998 Hrs, 18 4x42 Rear Duals, | 210 HP |



C 44759 1995 CIH 7240 MFD Cab, 3459 Hrs, Diesel, 4 Remotes, Tires Front 16 9x28, Rear 18 4x42 W/Duals, Quick Hitch, 195 HP



B 24788 1997 CIH 8920 2WD Cab, 1808 Hrs, Diesel, Cab, W/fe, 540/1000 Pto, 3 Pt Hitch, Top Link, Pto Shld, 155 HP+



B 45709 1982 AC 6080 MFD Cab Tractor/Ldr/Backhoe, 3685 Hrs, Diesel, 540 PTO, 3 PT Hitch, Tires Fr-12 4x28, Rear-18 4x34 Duals, Gear



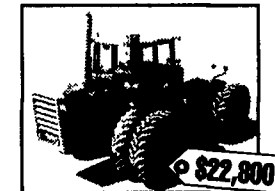
C 32388 CIH 2594 2wd Cab, 5233 Hrs, Diesel, 2 Hyd Valves, 3 Pt, Top Link, 1000 PTO, Tires Fr - 20 8x38, Rear - 20 8x38 Duals

MAGNUM TRACTORS

| NO. | YR | MAKE | DESCRIPTION | HP |
|---------|------|------|---|---------|
| B 44536 | 1998 | CIH | MX 270 MFD Cab, 1364 Hours, | 235 HP+ |
| A 44234 | 1999 | CIH | MX 240, 1867 Hrs, | 205 HP+ |
| B 43058 | 1998 | CIH | 8940 MFD Cab, 2054 Hrs, 20 8x42 Rear Duals, | 205 HP+ |
| C 44759 | 1995 | CIH | 7240 MFD Cab, 3459 Hrs, 18 4x42 Rear Duals, | 197 HP+ |
| C 32439 | 1991 | CIH | 7140 MFD Cab, 4973 Hrs, 16.9x30 Front Tires, | 195 HP+ |
| B 46051 | | CIH | 8930 MFD Cab, 1311 Hrs, 18.4x46 Rear Duals, | 185 HP+ |
| A 25895 | 1997 | CIH | 8930 MFD Cab, 6969 Hrs, 20 8x42, | 185 HP+ |
| D 44351 | 2002 | CIH | MX220 MFD, 192 Hrs, | 185 HP+ |
| D 44311 | 2002 | CIH | MX220 MFD Cab, 189 Hrs, | 185 HP+ |
| A 43970 | 2001 | CIH | MX220 MFD Cab, 1613 Hours | 185 HP+ |
| A 25512 | 2001 | CIH | MX220 MFD Cab, 2279 Hrs, 20.8x42 Rear Duals, | 185 HP+ |
| A 25517 | 2001 | CIH | MX 200 2WD Cab, 1775 Hrs, 18.4x42 Rear Duals, | 165 HP+ |
| B 45261 | 1995 | CIH | 7220 MFD Cab, 3432 Hours, 1000 RPM PTO, | 155 HP+ |
| B 24788 | 1997 | CIH | 8920 2WD Cab, 1808 Hrs, 18 4x46 Tires, | 155 HP+ |
| A 25516 | 2001 | CIH | MX180 2WD Cab, 2169 Hrs, 18.4x42 Rear Duals, | 145 HP+ |
| A 25515 | 2001 | CIH | MX180 2WD, 2145 Hrs, 18.4x42 Rear Tires, | 145 HP+ |
| C 32467 | 1998 | CIH | 8910 MFD Cab, 1514 Hrs, 18.4x42 Rear Duals, | 135 HP+ |

4WD TRACTORS

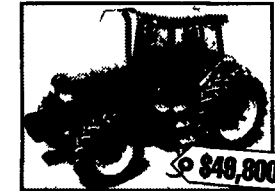
| NO. | YR | MAKE | DESCRIPTION | HP |
|---------|------|-----------|--|------------|
| B 43937 | 1997 | CIH | 9390 4WD Cab, 3739 Hours, Front & Rear Duals, | 425 ENG HP |
| B 25484 | 1999 | CIH | 9370 Quadtrac 4WD Cab, 2630 Hrs, Ag Tractor, | 360 ENG HP |
| B 43094 | 1997 | CIH | 9370 Quadtrac, 4781 Hours, 12 Spd Power Shift, | 360 ENG HP |
| A 24962 | 1977 | Steiger | 325 4WD, 23.1x34 Front & Rear Duals | 325 ENG HP |
| A 25865 | 1982 | Versatile | 835 4WD, 6000 Hrs, 20.8x38 Rear Duals | 230 PTO HP |
| A 25662 | | IH | 4386 Cab, 23.1x30 Rear Duals | 175 PTO HP |



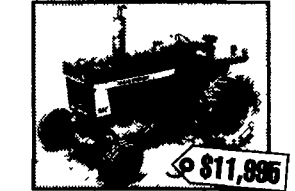
A 25665 1982 Versatile 835 4WD Tractor, 6,000 Hrs, PTO, 20 8 X 38 Duals, 230 PTO HP



B 44938 1998 Case-IH MX 150 2WD, 1653 Hours, 3 Point Hitch, Top Link, Quick Hitch, 540/1000 PTO, PTO Shield, 130 HP



A 25895 1997 CIH 8930 MFD Cab, 6969 Hrs [Canadian], 540/1000 Pto, 3 Pt Hitch, Tires: Front - 16 9x30, 20.8x42 Rear Duals, Powershift, 3 Remotes, 180 HP



B 44761 IH 1066H Tractor, 1518 Hrs, 116 HP



B 44383 Sunflower 22.5' Disc



C 43495 IH 756, 9105 Hours, 540/100 PTO, 3PT Hitch, Rear Weights, 2 Remotes, 18.4x34 Rear Tires, New Clutch, 76 HP



D 45535 1991 JD 9900 Combine, 3178 H

VISIT US ONLINE: WWW.HOOBER.COM

- INTERCOURSE, PA
800 732-0017 (A)
- McALISTERVILLE, PA
800 433-6679 (C)
- MIDDLETOWN, DE
800 341-4028 (B)
- SEAFORD, DE
800 843-3056 (D)



SERVING AGRICULTURE SINCE 1941

Visit Our Web Site at www.caseih.com
Case IH is a registered trademark of Case Corporation.

Intercourse
26266 IH 9
26265 IH 1
26267 IH 8
26269 WH 2
26264 CIH 1
26124 CIH 1
26153 BR 1
26146 JD 2
26143 CIH 9
26139 IH 1
26138 CIH 5
26132 Wd 1
26128 GL 8
26126 GL 2
26127 GL 2
26123 KN 9
26119 CIH 6

Middletown
46334 IH 5
46326 CIH 4
46331 JD 2
46332 JD 2
46318 JD 6
46314 CIH 2
46047 CIH 2
46067 LP 1
46066 FD 1
46051 CIH 8

Great L

WEEK 1 NOW \$3,300
WEEK 2 NOW \$3,000
WEEK 3 NOW \$2,700

WEEK 1 NOW \$7,900
WEEK 2 NOW \$7,700
WEEK 3 NOW \$7,500
WEEK 4 NOW \$7,400

WEEK 1 NOW \$55,000
WEEK 2 NOW \$52,000
WEEK 3 NOW \$49,000
WEEK 4 NOW \$48,000