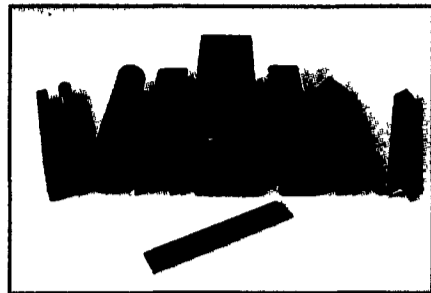


# OUR INVENTORY IS E-X-P-A-N-D-I-N-G Steel and Metal Liquidators

A Subsidiary of Joseph Fazzio, Inc.

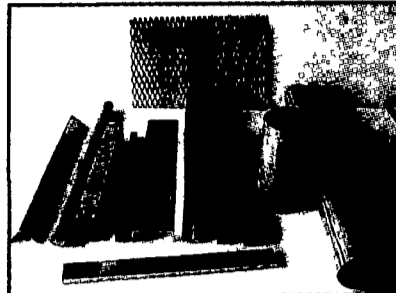
Buyers & Sellers of New & Surplus Steel • Metal Products • Construction Equipment



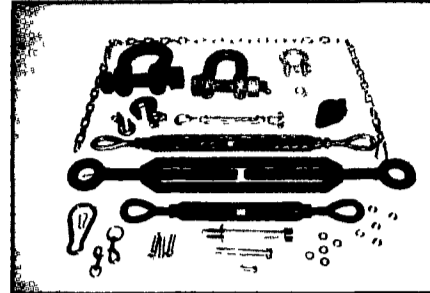
Structural Steel Shapes



Angles, Channel, Plates, Etc



Structural Aluminum Shapes



Residential/Commercial & Industrial Hardware

Structural beams • Shapes • Bars • Plates • Sheets • Grating • Tubing • Pipe  
Industrial Hardware • Tools & Tooling • Pallet Racking • Tube Lock Scaffolding  
Available in...Stainless, Aluminum & Galvanized

Conveniently Located At:  
407 Old Airport Road New Castle, Delaware  
**(302) 322-9960**

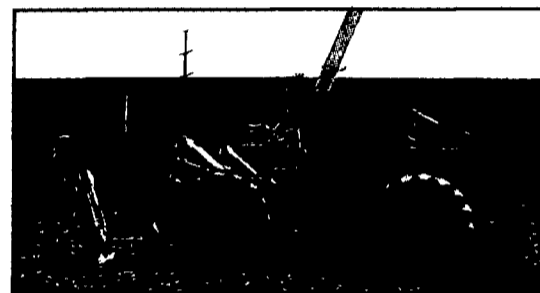
Exit 141 South to Exit 4-B  
Turn LEFT at Old Airport Road-follow to end  
Hours: Mon thru Fri 7:30am to 4:00pm Sat 8:00am to 12:00pm

**LOW PRICES • NO SALES TAX**

## TOOLING ACCESORIES

Sold By The Pound

- Cutting Tips • Caps
- Milling Bits • Drill Bits
- Nuts, Bolts & Washers



Various Construction Equipment Available

- \* Backhoes
- \* Excavators
- \* Cranes
- \* Rollers
- \* Crawler/Tractor/Dozers
- \* Various Model Trucks
- \* Screening Plants
- \* Buckets & Attachments

Financing Available

INGERSOLL RAND • JOHN DEERE • KOBELCO • KOEHRING • KOMATSU • LIFT IT • LIFT KING • LINK BELT • MITSUBISHI



## FAZZIO CONSTRUCTION EQUIPMENT, LLC

Visit our website: [www.josephfazzioinc.com](http://www.josephfazzioinc.com) for entire equipment & product line (856) 881-3185



**MITSUBISHI Model BD2C LGP - S/N 2B600808** (late model) 4 cylinder Mitsubishi diesel, 6 way blade, powershift trans, 20" swamp pads, 80% undercarriage, canopy, 2184 hours ... \$12,500



**CATERPILLAR Model 12 - S/N 8T20075**, 6 cylinder Cat diesel, 12' blade, cab, heater, 13.00-24 tires, 4 NEW tires and 2 tires @ 50%, scarifier, working lamps . . . . . \$6,451



**NEW Thumbs - fit 5,000 to 100,000 size machines**  
\$299 to \$1,900 each (Quantity Discounts Available)  
**NEW HEAVY DUTY Gravel Boxes**  
7 cu yd = \$3,890/ea.,  
8 cu yd = \$4,200/ea.,  
9 cu yd = \$5,000/ea.



**1999 KOBELCO Model SK270LC Mark IV Excavator - S/N LBU0267**, 6 cyl Cummings diesel, cab, heater, 11'12" stick, 28" bucket, 32" street grousers, working lamps, 80% undercarriage, 5714 hours . . . . . \$69,800

- Caterpillar
- Case
- Hitachi
- John Deere
- Kobelco
- Komatsu
- Mitsubishi
- Thomas
- More Available

**300+ Machines In Stock**

- Air Compressors
- Asphalt Rollers
- Backhoes
- Cranes (various models)
- Crawler/Loaders
- Crawler/Tractor/Dozers
- Dirt Rollers
- Excavators (inc. mini's)
- Forklifts (Rough Terrain/Telescopic/Generators)
- Manlifts (Scissor & Telescopic)
- Mobile Rubber Tire Excavators
- Motor Graders (inc. mini's)
- Motor Scrapers (Pneumatic & Solid Tires)
- Pumps

- Rubber Tire Loaders (inc. mini's)
- Scrap Handler/Magnet
- Hyd. Excavators
- Screening Plants
- Shear w/Excavators
- Skid Steer Loaders
- Skidders
- Sweepers
- Tractors
- Trailers (various models)
- Trench Compactors
- Trenchers
- Trucks (various models)
- Welders
- Winches

STRUCTURAL STEEL PRODUCTS  
BEAMS • METALS • PLATES  
INDUSTRIAL HARDWARE • BOLTS  
TURNBUCKLES • SHACKLES

METRIC PIN SHAFT FOR EXCAVATORS / LOADERS / DOZERS / BKTS & ATTACHMENTS			
4140 Grade, Ground, Turned, Polished & Annealed			
SIZES	\$ price per ft cut to your length quoted on request plus sawing charges	Ordering \$ per ft/15-20 ft. random lengths	Weight per ft in pounds
65mm = 2.558"	\$29.00/ft	\$25.00/ft	16.7
70mm = 2.755"	\$32.00/ft	\$30.00/ft	20
80mm = 3.149"	\$42.00/ft	\$38.00/ft	27
90mm = 3.543"	\$53.00/ft	\$47.00/ft	33
100mm = 3.937"	\$64.00/ft	\$57.00/ft	42

CATERPILLAR • CLARK • DEL MAG • FORD • GEHL • GRADALL • HITACHI • HUBERT • HYSTER

NEW HOLLAND • TCM • TROJAN • TRAVERS • VERMEER • YALE • CASE • CATERPILLAR • CLARK • FORD

INGERSOLL RAND • JOHN DEERE • KOBELCO • KOEHRING • KOMATSU • LIFT IT • LIFT KING • LINK BELT • MITSUBISHI