

MIDATLANTIC CONTR

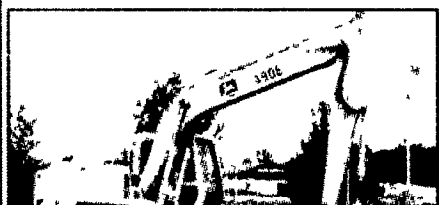
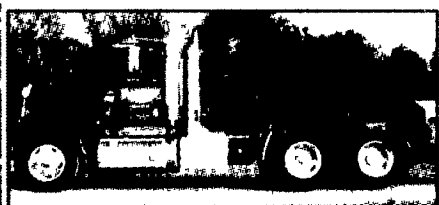
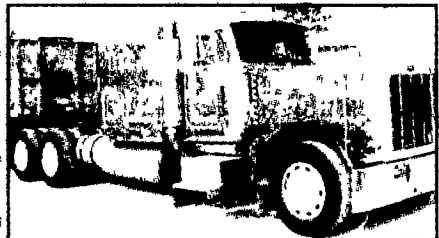
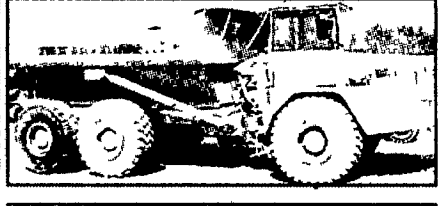
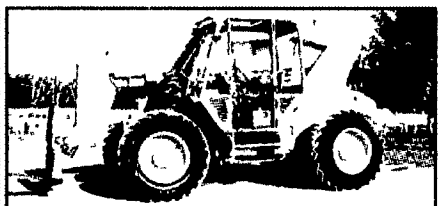
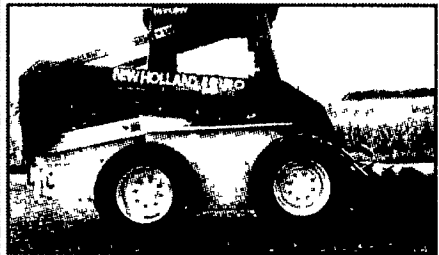
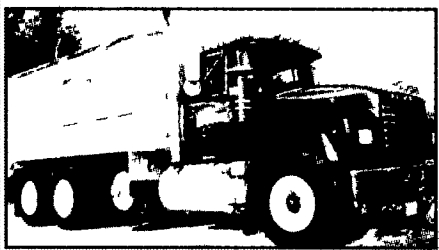
FRIDAY, OCTOBER 31

8:30
A.M.

at the FREDERICK FAIRGRO

DIRECTIONS: TRAVELING West on I-70 - Take E Patrick St. (Exit 56) to Fairgrounds.
TRAVELING North on I-270 to I-70 East, continue to

PARTIAL LISTING ONLY - New Items Added Daily
Updated Lists Available on our Website- wolfeauctions.com



TRACKLOADERS & DOZERS: CAT 953C trackloader, Erops, GP bkt, rental return; CAT 963, cab, A/C GP bkt, S/N 21Z4093; CAT 963 trackloader LGP; CAT 943 trackldr; '80 CAT 955, Orops, GP bkt; good teeth & unc, S/N 13X1713; CAT 941B Orops, GP bkt; JD 455G trklldr, Orops, GP bkt; CASE 855D; JD 555B. CAT D4C series II dozer w/6-w bld, Orops, S/N 9BG00456; FIAT ALLIS FL9 trklldr, Orops, GP bkt, S/N 001218; CAT D3C III dozer, Rops, 6-w bld, very nice; '93 CAT D3CII dozer, 6-w bld; CAT D3B dozer, Rops, 6-w bld, LGP; CAT D5C 6-w bld, Orops, LGP, 60% unc; S/N 64584; CAT D5 6-w, Orops, 50% unc, S/N 97J581; JD 400G dozer, 6-w, S/N C789587; JD 550 dozer.

EXCAVATORS & OFF ROAD DUMPS: JD 490E hyd exc, cab, S/N S020634; '00 KOBELCO SK-70 exc w/cab & a/c; '99 KOMATSU PC45R exc w/cab & a/c, & blade, 2695 hrs; '99 BOBCAT X320 mini exc; DRESSER V0 566A w/bld. '96 TEREX 3066C off rd dump; VOLVO A-25 6x6 off rd dump.

TRACTOR LOADER BACKHOES: '00 CASE 580 Super L, 4x4, Erops; CASE 580 Super L, 4x4, Ext hoe, 2027 hrs; '99 CASE 580L series II 4x4, ext hoe, Erops; CASE 590 4x4, ext hoe, Erops; CASE 580K 4x4 ext hoe, Erops, GP bkt; CASE 580 Super E 4x4; CASE 580E 2x4; CASE 480E 4x4; '99 JD 410-E 4x4, Erops, ext hoe, S/N X879685; '99 JD 410E TLB 4x4, Erops, ext hoe, S/N X 877335; '99 JD 310D turbo, 4x4, ext hoe, Erops; '94 JD 310D TLB 4x4, Erops, ext hoe, S/N G799267; '99 NH 555E 4x4, ext hoe, Erops; NH 555E 4x4 ldr bkho, Orops; '98 JCB 214 4x4, ext hoe, Erops; JCB 1550B ldr bkho w/cab, S/N 316689/7; EARTH FORCE 4.

RUBBER TIRED LOADERS & SKIDLOADERS: '99 JD 644H rt ldr, cab, GP bkt; '97 JD 644G rt ldr, cab, GP bkt; JD 544E, cab, GP bkt. CAT 246 skldlr w/cab & heat; '02 BOBCAT T-190 skldlr on tracks, cab, hyd attach coupler; '01 BOBCAT 773G skldlr, aux hyd, low hrs; BOBCAT 873 skldlr, 1600 hrs; BOBCAT 863 high flow skldlr; BOBCAT 863 H w/cab skldlr; NH LS-180 Hi-flow, 2 spd, 1100 hrs; JD 260 skldlr, low hrs; TAKEUSKI track skldlr; (3) TORO Dingo 425s; (2) BOBCAT hyd breakers.

FORKLIFTS: '01 BOBCAT V518 versa-handler shooting boom forklift; IR VR60B shooting boom forklift; '00 ZOOM BOOM 10055 shooting boom, 10,000 lbs; '99 JCB 506C, Orops, 4x4, 36' reach, 6000 lbs, 2000 hrs, S/N 585611; JCB 506B shooting boom; '97 LULL 6K-37 shooting boom; (2) ALLIS CHALMERS all terrain forklifts, 5000 lbs; OWATANNA 770.

FARM TRACTORS & IMPLEMENTS: FORD 8210 4x4, cab, air, heat, 1600 hrs; (2) FORD 6610 tractors w/boom mwr, CAH; NH 1920 4x4; '78 CASE 970 farm tractor, cab, 80% rubber; '58 FORDSON 64 farm tract, Perkins dsl; JD M gas eng farm tractor; (2) Industrial disc harrows; 10' 3 pt stone rake; 5' grader box w/scarifier; Case heavy off set disc; 3 pt arps snow blwr; 3 pt spring tooth harrow; 3 pt Ford spring tooth harrow; 3 pt fertilizer spinner; 3 pt 6' rotary mwr; (2) 3 pt Brillion 8' seeders; 3 pt Brillion 10' seeder; Ferguson 3 pt hay rake; Antique corn sheller; Antique wheat fan.

ROLLERS & MISC: TAMPO RD 16 D padfoot dirt roller, Detroit dsl eng; '97 DYNA-PAC CA-251D vib rllr, Cummins dsl, Orops, 84" drum, S/N 58312861; DYNA-PAC CA 25 84" sm drm rllr; SAKAI SV 70D 66" sm drm, S/N 30119; IR SD 100D sm drm rllr w/cab, S/N 7028S; BARBER GREENE BG-220-B paver, dual operator ctrls, S/N BX290; '00 CASE 560 trencher w/plow & quad; GROVE 40' manlift; FMC hydroseeder on 9 Ton Eager Beaver trl; '99 FINN trl mtd 1000 gal hydroseeder, dsl pwr; New dually body for GMC/Chevy 3500, 8' 4x4 bed, fits '01 & up; IR 175 & 185 cfm tow behind air comp; New 18' landscape dump w/fold down sides; RAYGO RG 1665 stump grinder; VERMEER LM 42 walk behind trencher; LINCOLN SA 200 wldr; Misc plbg tools; IHC dsl pwr plant; 5" hale fire pump co water pump; EMPIRE 1.5K gas pwr generator; B & D valve machine; TORO S-140 sand trap machine; Misc salt spreaders.

FREDERICK COUNTY DRUG SEIZURES: '01 YAMAHA ZF 1000 RI motorcycle, low hrs; '98 YAMAHA FZR600R motorcycle, 5819 hrs; '94 BMW 325I, 4 dr, auto, leather; '90 LEXUS 4dr, auto w/leather & sun roof; '96 CHEVY Lumina 4 dr, 60K mi; '95 BUICK Regal 4 dr, 58K mi; '94 FORD F250 pu, 4x4, gas, auto; '89 CHEVY Blazer 4x4; '88 AEROSTAR mini van; 17" pearl necklace; Alpine CD car stereo; Watch, gold color; Craftsman socket set; Silver dollars - 1928, 1926, 1922; Panasonic VHS player; GE Spector Range oven, GE Triton dishwasher; Collection of baseball, hockey & football cards, Plus many pieces of jewelry.

ROAD TRACTORS: '97 KW T800 Tri/A Rd tract, Cat 3406-E trans, RTO 1690, 8LL w/Wetline Frt axle, 12,860 lbs, rear axle, 46,000 lbs, 11.4x24.5 rubber; '98 IH 9300 T/A Rd T, Daycab, 460 Cummins dsl eng, 13 spd dbl over trans, Cruise ctrl, tilt whl, A/C, P/W, dlx interior, pwr mirrors, 44,000 lb rears, air ride susp; '97 PETE 379 T/A Rd T, 425 hp Cat dsl eng, 15 spd trans, Daycab, Wetline, air ride; (4) '96 IHC 9300 T/A RT, N-14 Cummins dsl eng, 9 spd trans, air ride susp, Pro sleeper; '95 PETE 379 ext hood, T/A RT, Cat 3406 eng, 425 hp, 15 spd trans, 63" flattop bunk, 3.70 rears, 40,000 lbs, Wetline; '90 PETE 379 T/A RT 450 Detroit eng, 9 spd OD trans, S/N 300776, ext hood 48", flattop sleeper, 4:11 rears 24.5 lo pro tires, recent overhaul; '88 PETE 359 T/A RT, 425 Cat eng, 13 spd trans, S/N 267534, ext hhd, 63" high top, sleeper, 250" whl base, 340 rears, 11-25.5 tall tires, 2-w Wetline; '96 FORD LN 9000 T/A RT Cummins 350, 9 spd trans; '01 IH 8100 S/A RT, Cummins pwr eng, auto trans, air ride equipped; '96 MACK CH 613 S/A daycab RT; '94 OTTAWA yd jockey.

TRI/A DUMP TRUCKS: '98 MACK RD 688 Tri/A dump, 350 Mack eng, 8LL trans, S/N 1M2P267C3WM038462, 16' alum body w/roll tarp, 44,000 lbs rears, 18,000 lb frts; '97 MACK RD688 Tri/A dump, 350 Mack eng, 8LL trans, 16' alum body w/roll tarp, 44,000 lb rears, 18,000 lb frts; '97 IH 9200 Tri/A dump, 16' alum body w/roll tarp, 3rd lift axle, Cat C-12 dsl eng, 380-410 hp, 10 spd trans, air ride; (2) '95 MACK DM690S Tri/A dumps, E-7 Mack eng, 300 hp, 6 spd trans, 16' Benson alum body w/tarps, 18,000 lb frts, 50,000 lb rears, air lift, 3rd axle; '92 PETE Tri/A dump w/Cat 3306 eng, 8ll trans, Camel susp, steel body; '88 Freightliner Tri/A dump, Cat PC 350, 9 spd trans, w/elec tarp steel Galion dump body, Jake brake, New rears, 11R-24.5 tires;

T/A DUMP TRUCKS: '89 IH S-2500 T/A dump, 270 Cummins eng, 9 spd Fuller trans, J & J alum body; '78 FORD 9000 T/A dump, Cummins, steel body

S/A & FLATBED DUMPS: '92 IHC 4700 S/A dump, IHC dsl pwr, 6 spd trans, S/N 1HTSCPHN0NH441650, 10' dump body, AB; '88 FORD L8000 S/A dump, 7.8 dsl eng, 7 spd trans, P/S, A/B, A/C w/Plocot SS salt

spreader
gvw, chi
A/C; '95
'6 spd tra
landscap
CHEVY
dsl eng,
cab dum
CAB + C
'98 STE
A/B, lon
4,000 l
lb fronts
BOX TR
urb doc
Cat dsl,
FORD F
HTSCO
dsl, auto
eng, auto
FLATBE
4700 fla
eng, 6 sp
stakebod
flatbed v
3500 bk
w/Prenti
UTILIT
hood air
auto cran
auto cran
PICKUP
'00 CHE
CHEVY
cab 4x4,
4x4's, 50
4x4; '97
F250 4x
'94 FOR
'93 FOR
Ram 350
CARS &
regal, 53
leather, s
'98 YAM
TRAIL
T/A fol
dump, a
'03 T/A
MISC: C
btu; New
Robolas
PRE-SA
TERMS
Personal
Masterca
PRE-SA
SALE C