

Public Auction Register

Closing Date Monday 5:00 P.M.
of each week's publication

Internet Sale Register will be updated
by Friday at 12 Noon

ATTENTION AUCTIONEERS

All sales register info needs complete address,
street, town, county & state.

SAT. OCT. 25 - 1PM 14 Acre farmette at 475 W. Rt. 897, Reinholds West Cocalico Twp., Lanc. Co. PA by Art Pannebecker Auct. Serv., AU001476-L, 717-336-6983, 717-336-2131.

SAT. OCT. 25 - 1PM Pennsylvania Fall Classic Simmental Cattle Sale at Green Co. Fairgrounds, 1-79 S. Waynesburg, PA by Larry Martin Cattle Sales, 217-935-8211, 217-433-0242.

SUN. OCT. 26 - 9AM Firearm, Indian & related items auction at Redding Auct. Serv., Gettysburg, PA, RH-78-L 717-334-6941.

SUN. OCT. 26 - 11:33AM Breeder's Sale, King's Auctions, Burrows Road, West Winfield, NY, 315-822-5221.

MON. OCT. 27 - 10AM Restaurant Equip. 1549

Bobali Dr., Harrisburg, PA 17104. (selling for PA Dept. of Labor & Industry Bureau of Blindness & Visual Services). ziegler-auction.com

MON. OCT. 27 - 10AM Valuable Real Estate Auction, antiques, HH goods, milk bottles, Hess trucks, etc. 145 S. Shenk Ave., Strasburg, Miller & Siegrist Auct. 717-687-6857.

MON. OCT. 27 - 11AM Real estate, mixed use commercial bldg. w/KOZ tax benefits at Fairview Ave. & E. South St. Slattington, PA by Hostetter Auct. 724-847-1887, 1-800-875-2437.

MON. OCT. 27, TUES. OCT. 28 - 11 & 9AM, respectively. Equip., shop tools, construction items, backhoes, graders, welding tools, misc. tools & equip. at Rt. 194 1 mi. N

of Abbottstown, PA, by McGrew Auct. Co. 717-428-0922, 410-299-3326.

MON. OCT. 27 - 4PM Absolute real estate auct., Spruce Hill Twp., Juniata Co. Bryan D. Imes, Auct. 717-527-2449.

TUE. OCT. 28 - 2 AUCTIONS, 8:30AM & 12PM 103 Garrison Rd., Johnstown, Cambria Co. Selling for PennDOT. Ziegler Auct.

TUES. OCT. 28 - 9:30 AM Public auction of tractors, equipment, household, & tools, 3461 Durham Rd. (Rt. 413), Mechanicsville, Pa. Arthur Hanna Auc-

tioners, AU-000134/-L, 908-995-9699.

TUES. OCT. 28 - 10AM 8ac. farmette w/2 houses, misc. bldgs., pers. prop., orchard equip., mowers, guns, misc. items at 101 A Summit Hill Rd., Paradise, PA, by Kline Auct. 717-733-1006.

TUES. OCT. 28 - 1PM Tractor/Trailer auction at 1976 Auction Rd., Manheim, PA by Transport Auctions, 866-653-2414 or 717-653-2414.

TUES. OCT. 28 - 2PM Residential real estate auct., 1205 Valley Rd. & 1005 Flower Lane, Marysville, PA; 1010 Flowers Lane, Marysville, PA; 2741-43-

45 Valley Rd., Marysville, PA; 1271 Flowers Lane, Marysville, PA by B.J. Jennings, 717-268-0020.

WED. OCT. 29 - 9AM Consignment Auction of farm machinery, tools, etc. Lebanon Produce Auction, Reistville, Joe Hoke Auct. 717-272-2039.

WED. OCT. 29 - 9AM Public Auction. Going out of business, complete liquidation. Rt. 23 and Rt. 176, Morgantown, Berks Co. Tracey L. Jones, Auct. AU-3607-L, 610-286-7834.

FRI. OCT. 29 - 10 AM Farm Equip. 1190 Jacksonville Rd., Bellefonte, Centre Co. (selling for Penn Dot due to a road construction project). zieglerauction.com



GUNS WANTED Gun Auction Nov. 10

Sell your guns safely - we are a licensed dealer and check all buyers. Commission is 10% for guns selling over \$100.

Call Mark 717-413-6239.

Shaffner Auction Co. 717-492-0004

Mark Diffenderfer AU-2897-L

Marty Fleck 717-413-6238

"We treat your property as if it were our own"
www.shaffnerauction.com

REAL ESTATE AUCTION

11 Acres of Land
Metal Building - Mobile Home

WED., OCT. 29, 2003 at 1:00 pm

2474 Robert Fulton Highway, Peach Bottom

Fulton Twp, Lancaster County, PA 17563

(along Route 222 south of Wakefield)

SELLER Cecil Roil

ATTORNEY Ronald Kearns



AUCTIONEER AY-245-L

Jessica Shaub Meyer

Howard E. Shaub

Phone 717-464-3541

www.shaubauctions.com

FALL AUCTIONS



General Consignment Auction &
Miscellaneous Equipment Auction.

SATURDAY, NOV. 8 2003 at 9 A.M.

209 Oakhaven Rd., Fleetwood, PA

FARM EQUIP., HARDWARE, LAWN & GARDEN,
TOOLS, H.H. GOODS & MISC. ITEMS

RECEIVING DAYS: Tuesday, Nov. 4 thru Friday, Nov. 7 - 8:00 AM to 5:00 PM. Loader tractor will be on site all day Friday or call 610-683-7161 for appt.

TO HAVE ITEMS INCL. IN ADV.: Please call auction at 610-683-7161 or fax to 610-683-5429 before OCTOBER 28, 2003.

Nov. 11 - Dec. 18 - Christmas Trees - Wreaths & Collectibles. All related Christmas Items.

Nov. 20 - Christmas Crafts & Collectibles.

FARM MACHINERY

DAIRY EQUIPMENT DISPOSAL AUCTION

Saturday, November 1, 2003 at 10:00 AM

At the Linda Kreider & Sons Farm 939 Trimble Road Trout Run PA (next to Rose Valley Lake)

Previews: Friday, October 31 1PM-4PM & sale day 8AM-10AM

Directions: From Rt.14 at Trout Run, take Trout Run Mtn. Rd. 2.5 miles, left onto Rose Valley Rd. & go 6/10 mile to Trimble Rd., right onto Trimble Rd. & go 1 mile to farm lane #939 on left. From Warrensville area: take Sugar Camp Rd. to Trimble Rd. intersection. Watch for auction signs

Sale Order: Beginning with stationary equipment including Dairy Equipment, Silos, Unloaders, Barn Accessories followed by small & portable tools & miscellaneous items & ending with major machinery & tractors

Notary on site for title work
TRACTORS • SKID STEER

John Deere 4020 side console; John Deere 4020; set dual wheels with tires to fit 4020's; Gehl 3510 skid steer with spear, (2) buckets & round bale attachment

PICK UP TRUCK • CAMPER • UTILITY TRAILER

1987 F-250 Ford 4.4 (farm truck) with title; Travel Indust. pick up bed camper; steel frame single axle trailer with stake sides & title

TILLAGE • PLANTING • HAY • HARVEST EQUIPMENT

JD 7000 6-row corn planter; J&M gravity box w/hydraulic auger; JD 210 tandem 16'disc; 16' Pittsburgh harrow; spring tooth harrow; JD FB10 grain drill; 12' culti-packer; Brillion 12' culti-mulcher; Glen Co. 7-tooth chisel plow; (2) crop sprayers; 3-pt fertilizer spreader; NH 315 baler w/preserve. attach; Sitrex ST520H tedder; H&S bi-fold rake; (2) H&S 9x18 steel hay wagons; H&S 8x16 steel hay wagon; NH 1411 disc bine; NH 36' hay & grain elevator; NH 28 blower; (1) Kilbro & (1) Green gravity box; JD 3940 2-R chopper w/30" corn head, 5 1/2" pick-up; NI 352 manure spreader (rough); NH 680 tandem manure spreader; 3-pt steel scraper blade

GENERATOR • TOOLS • MISCELLANEOUS EQUIPMENT

Gen-Power 40kw p.t.o. generator (like new); steel round bale feeder (newer); aprx (60) 8" new concrete blocks; Ready heater; lg fuel oil tank w/pump; baler twine; seeds; (2) pr elect stock clippers; misc and, shop & garage tools

DAIRY & RELATED EQUIPMENT

(2) Surge 1,085 stainless steel tanks to sell with Alfa Laval Agri & Gibrian Express Compressors; To be sold as a unit - Alfa Laval VP-78 universal compressor system w/Century 7.5 elect motor, surge vac pump, aprx 250' stainless steel pipe line, (5) surge milkers; (2) stainless steel wash sinks; oil-fired water heater; 250 gal oil tank w/fuel

BARN EQUIPMENT • RISSLER MIXER

HIGH MOISTURE CORN • SILOS & UNLOADER

Four-ton steel protein bin w/auger; Rissler TMR-75 bushel stationary mixer with conveyors; (4) concrete silos (16'x48' • 18'x60' • 16'x65' • 20'x60'); unloaders (Volumax 20' 1 yr old; Jamesway VII; 2 others); aprx 8-doors of high moisture corn; (5) ceiling + (2) box barn fans; rubber mats; breeder's kit & wheel; Patz gutter system; steel gutter grates; water bowls; trainers new-in-box; (8) steel gates; soaps, etc.

Terms: Cash Checks subject to approval with proper ID No buyer's premium Food on premises.

Bob, Chuck & Rich

ROAN Inc.

Auctioneers & Appraisers

3530 Lycoming Creek Road

Cogan Station PA 17728

(570) 494-0170 * (800) 955-ROAN www.roaninc.com * AU-000777-L



SECRET NORTH
PUBLIC AUCTION
CUSTOMER'S BEST FRIEND
3 BAY 30'x50' SHOP GARAGE
2 1/2 ACRE TRACT
WED., NOV. 26 2 PM



Location: 589 Springville Rd. (Rt. 897), New Holland, Salisbury Twp Take Rt. 322 East from Blue Ball. Turn right Rt. 897 South approx. 3 miles to property on left 1-1/2 sty Cape Cod style house with 2,612 SF plus 780 SF in lower level Eat-in kitchen, dining rm, living rm, 1st floor master bdrm w/walk-in closet & bath w/whirlpool, 1st floor laundry & 1/2 bath 2 additional bdrms & bath on 1st floor & 2 bdrms & bath on 2nd floor Large family rm., oil forced air heat & central AC, central vac, garage/shop 30'x50', 3 large bays w/12'x12' overhead doors & 10'x20' office, 2.5 acres partially wooded fenced pasture, w/stream
Note: This is truly "one-of-a-kind" property "Property must be sold" Inspection by appointment or open house Sat, Nov 8, 15, 22 from 1 to 4 PM For color brochure, land plotting or financing call Auctioneers 717-733-1006

SAM S. JR & MARTHA L. KING
717-354-5570

Randal V. Kline, Roy E. Good, Jr.,
Keith Snyder, Auctioneers
717-733-1006
Lic. #499 - #2116 - #3433

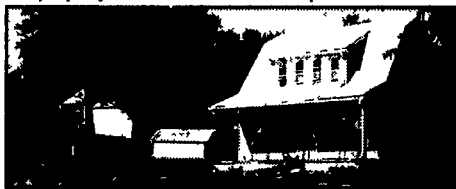


PUBLIC AUCTION VALUABLE REAL ESTATE RED RUN AREA

3 BDRM. 2 STY. DWL. - 2 CAR GAR.
2.6 ACRES

WED., NOV. 12, 2003 @ 4 P.M.

Location: 359 E Church St (between Reamstown & Hahnstown) Rt 322E from Ephrata cross under Rt 222 bypass turn left onto Hahnstown Rd (becomes E Church St.) approx 3 mi to property on left E Cocalico Twp., Lanc Co



Real Estate consists of 2 sty frame/vinyl sided house w/1584 sq ft area Eat-in country kitchen w/oak cabinets & built-in pantry, sandstone fireplace, large living room, den/office, full bath, 1st floor laundry, 3 bdrms, full bsmt. Oil forced air heat. Alum clad soffit & fascia, replacement windows Detached 2-car garage All on 2.6 acres w/small stream
Note Desirable location - tasteful decor - move-in cond house Abundant lawn & garden area w/fruit trees & meadow Mature shade & large pine trees Inspection by appointment or open house on Sats, Oct 25 & Nov 1 & 8 from 1-4 PM For brochure, land plotting or financing, call Auctioneers at 717-445-4309 or 717-733-1006 Terms 10% down, balance 60 days

Terms By:

DARYL B. & CAROLYN J. FOX

717-335-0623

Linda Kling, Atty.

Auction Conducted By:
Randal V. Kline, Roy E. Good, Jr.,
Keith Snyder, Auctioneers
Lic. #2116, #499, #3433



PUBLIC AUCTION VALUABLE REAL ESTATE

2-1/2 STY. DWL. - 2 CAR GAR. - BARN
CAMBRIDGE - SALISBURY TWP.
THURS., NOVEMBER 6, 2003
4 P.M.

LOCATION: 6243 Main St., Cambridge, PA. From Blue Ball Rt 322E approx 6 mi turn right onto Churchtown Rd go 2 mi. turn left onto Main St to property on left Salisbury Twp., Lancaster County



Real estate consists of 2-1/2 story frame w/siding house w/approx 1800 sq. ft. area. Country eat-in kitchen w/custom cabinets, family & living rms, 1st floor laundry, 1 1/2 baths, 4 bdrms, full bsmt & attic. Attached 2-car garage. BARN is 2-1/2 story frame w/siding bldg. 24'x48' w/overhead door & 2nd floor storage Storage bldg is 12'x20' w/overhead door On-lot well & septic system. Elec. baseboard heat & gas fireplace All on quiet rural lot Alum. clad soffit & fascia. Treated deck, porch & above ground pool w/deck. Move-in condition house, easy to own, economical & convenient location

NOTE: Terms 10% down, balance 60 days or before inspection by appointment or open house on Sats, Oct 25 & Nov 1 from 1-4 PM For color brochure, land plotting or financing, call Auctioneers at 717-445-4309 or 717-733-1006

Terms By: ROY M. & THELMA I. WEAVER

Auction Conducted By: 717-355-2320 Linda Kling, Atty.
Randal V. Kline, Roy E. Good, Jr.,
Keith Snyder, Auctioneers
Lic. #2116, #499, #3433
717-445-4309

