

**CENTRAL PENNSYLVANIA FARMS, FARMETTES, LAND AND CABINS**

Our Farm and Land Division currently has many farms, farmettes, land parcels, and cabins available in central Pennsylvania. We would be happy to send you a free farm and farmette list and/or rural land and cabin list

**Call for a complete farm and farmette inventory.**

Farm and Land Division

Fred Strouse (814) 364-1705  
Mel Rokey (814) 466-6688  
George Demchak (814) 625-9151  
Tim Lake (814) 364-1327



2300 South Atherton  
State College, PA 16801  
(814) 234-4000  
1-800-876-3395

**"DEAL FELL THROUGH"...** and now this exceptional 242 acre farm is once again offered! Farm has 160 acres tillable high-lime soil and usually gets 4 cuttings most years. All tillable land directly behind the barn. Good grazer potential. Barn has 91 oversized ties on 8 unit 2" Boumatic pipeline, new pre-cooler on bulk tank, concrete gravity fed manure pit, cow mats, tunnel ventilation. 24 calf stalls in main barn, 76 FS for heifers in attached 30x135' wing. 14x40, 18x50 and 20x55' CS silos. Very good 4 bedroom home built in 1980. \$335,000 includes crops growing and stored.

**MORT WIMPLE ASSOCIATES**

Real Estate Sales - Management  
FREE CATALOGUES U.S. ROUTE 20  
E-mail: wimple@capital.net SLOANSVILLE, N.Y. 12160  
Internet Page 518/875-6355  
www.farmsunlimited.com FAX: 518/875-6749

**CALL COLDWELL BANKER**

**FREE VIDEO TOURS ON CD & DVD CENTRE COUNTY**



**Bald Eagle Valley** - 26.1 acre farmette 19 acres pasture or hay land, 3.5 acres woodland & 2.5 acres site 1890's remodeled home, 1 1/2 bath, 3 bedrooms, bank barn, smoke house, machine shed & crib, 4 bay garage Nice small stream, close to state forest & park Potential for horse farm or small beef operation \$246,900 View complete brochure and slide show at [www.cbur.com](http://www.cbur.com)

**CENTRE COUNTY**



**New Listing - Penns Valley** - 5.29 acre farmette 28' x 52' dwelling in excellent condition 48' heated garage-workshop, outstanding commuting distance from State College. Reduced View our brochure, slide show, and video clips at [www.cbur.com](http://www.cbur.com) - Free CD & DVD Available

If You Want the Most Complete Farm and Rural Property Marketing Plan Available Visit the Farm and Rural Property Division at [www.cbur.com](http://www.cbur.com)

View farm, farmette, rural acreage, woodland and cabin brochures and slide shows. If you don't have Internet access call toll free for detailed brochures and list.

**BLAIR COUNTY**



**Tyrone area**, 115 acre general farm, excellent home, licensed butcher shop, sound 2-story bank barn, outbuildings \$449,500 Please view the complete details on [www.cbur.com](http://www.cbur.com).

Free CD & DVD available.

**HUNTINGDON COUNTY**



**Huntingdon Co.** - 12.04 acre farmette, workshop, 360 degree panoramic view. Add'l 13.86 Ac tract available, please view complete details [www.cbur.com](http://www.cbur.com) - Free CD & DVD Available



**COLDWELL BANKER UNIVERSITY REALTY**  
1126 E. Foster Ave. State College, PA 16801  
800/669-4925 Toll Free

**WANTED**

Southern Chester & Lancaster Counties Farm Land, Acreage for Subdivision and/or Horse Farms I have buyers that are Reputable & Flexible - Top Prices Paid!



Call Rich Goss  
@ (610) 496-2410  
RE/MAX at Jennersville  
(610) 869-7175

**106 Acre Farm 1812 Foxiana Road, Middletown, Pa \$649,900**

70 Acres Tillable, 15 Acres pasture 21 Acres Wooded 6 Bdrm. Farmhouse 2.1 baths 2 Fr. Stream, Bank Barn 10 Stall Horse Barn New pole barn, (2003) Inground Pool and a Home Warranty.

Call Greg Roye  
Coldwellbanker Homesale Services  
(717) 367-3500 (717) 572-1495  
e-mail [groye@excite.com](mailto:groye@excite.com)

**Central Pennsylvania Horse Farm CLEARFIELD COUNTY, PA (CENTURY FARM)**

Beautiful 22.79 acre Horse Farm includes: Over 2900 sq. ft. ranch home with 3-season porch, 2-car garage & in-ground pool. 36x74 horse barn with ten 12x12 stalls; 24x40 3-bay garage; 24x70 metal insulated Quanset style shed with concrete floor & attached lean-to; enclosed 50x104 riding ring, 50x104 pole type metal building. The entire property and buildings are in very good condition. Just off I-80 exit 123 at Woodland. \$389,000.

**Centre County Hunting Land**

156 wooded acre within 10 miles of Interstate 80. Bald Eagle Valley. \$159,000.



Contact Mel Rokey or Fred Strouse  
2300 South Atherton Street  
State College, PA 16801  
800-876-3395 or 814-234-4000  
[mrokey@lkbb.com](mailto:mrokey@lkbb.com)  
[www.lkbb.com](http://www.lkbb.com)

**THE REAL ESTATERS OF MANSFIELD**

1671 S. Main St., Mansfield, PA 16933  
(570)662-2138 • Evening (570)662-2363  
[realmans@epix.net](mailto:realmans@epix.net)

**FIELDS, WOODS, WATER & BUILDINGS!**

All available on this new listing located in Jackson Twp., Tioga County, PA Mix of tillable fields, pasture & woods on 102.24 acres Pond & wetlands for fish & wildlife Bank barn for animals/storage 3 bdrm home Minutes to Elmira & Corning Was \$180,000, reduced to \$169,900 M-1752

**CUSTOM BUILT HOME W/POND**

One of a kind 2 story, 3400 sq. ft Home featuring 4 bedrooms, 2.5 baths, 3 fireplaces, 2 family rooms, hardwood floors, attached 2 car garage, full bsmt, and 4+ gorgeous acres w/pond, Tioga County, PA, near Liberty & North of Williamsport. \$214,900

**WOODS, FIELDS & PRIVACY**

182.92 acres in Charleston Twp near Wellsboro, PA, Welsh Settlement area. Great mix of fields & woods. Approved sewage site. Great hunting. Some wetlands for wild life. 644' deeded right-of-way for access. Just \$205,800. M-1745

**WHAT A RETREAT**

2 story remodeled farm house. Approx 2614 sq. ft w/5 bdms, 2 baths, A/C, 2-car garage, 3 outbldgs including 24x59 garage/shop w/2 horse stalls on 6.23 acres. 1 mile to State Game Lands #12 Close to Canton, Wheelerville & Eagles Mere Just \$150,000 M-1715

**WALK TO STATE FOREST LAND**

From this 1.752 acres half way between Bloss & Ogdensburg in Southern Tioga County PA (Hamilton Township) Approved sewage site All wooded. Electric line to be extended this fall Minutes to Canton, Liberty, Blossburg Just \$12,500 M-1700

**CANTON TOWNSHIP LAND**

10+ surveyed acres w/tremendous view Utilities close by. Approved sewage site Mostly open w/some woods Deed restrictions on file State Game Lands nearby Just \$29,900 M-1669

**BALDWIN RUN HIDEAWAY**

3.45 surveyed & mostly wooded acres bordering Baldwin Run Road in Delmar Twp Walk across road to State Land Approved sewage site Just \$16,500 w/\$3,300 down bal \$13,200 8% int 10 yr amort \$160 15 p/m M-1463

**HILLS CREEK STATE PARK**

Location for this 2 acre tract w/long frontage on paved road, less than 300 ft from park, approved for low cost "inground" septic system Utilities available on site or very close Minutes to Mansfield + Wellsboro, PA \$27,900 M-1635

**Rural Lancaster Country Motel on 3.5 Acres**

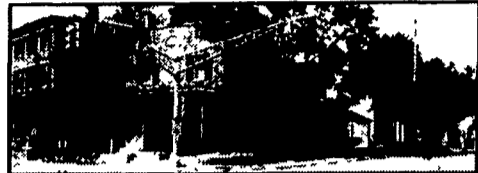
Call About Several Large Dairy Farms SPECIALIZING IN FARMS & LAND

**MAHLON OBERHOLTZER AGENCY**



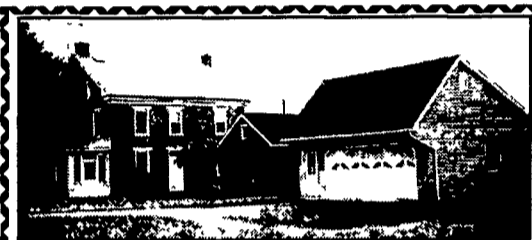
Your Central PA Farm Broker  
Over 25 Years Selling PA Farms  
Smoketown, PA 17576 (Lanc. Co.)  
717-392-1177  
Toll Free 877-283-9109  
[www.FarmSeller.com](http://www.FarmSeller.com)

**Antique Store and Large Duplex in Alloway, NJ**



Circa 1850, this historic brick property in the heart of town is a treasure. The store includes original counters and display cases. The home is a three story duplex with large rooms. If your dream is an antique store of your own, this is it. Priced at only \$300,000.

CENTURY 21 WEAVER REALTY 856/769-0100  
Please call Marge Crane:  
Listing agent 856/769-0495



York Co. Farm, 31.9 acres, 674 Dairy Ln, East Berlin, PA. Well maintained 2-story stone farmhouse, built 1871, w/kitchen/ living area, bedroom, lg bath/laundry on 1st fl; 3br's, lg bath 2nd fl. Energy efficient windows. Matching stone summerhouse, a stone/brick/frame bank barn w/gated barnyard. One 2-car & one 4-car garage, storage buildings. Buildings located at end of long lane. 1,400 feet road frontage.

Call 717-229-2340

**tranzon ALDERFER**

TRANSFORMING ASSETS INTO ENERGY

Open House: Tuesday, Nov. 4  
12:00-2:00 P.M.  
Auction: Monday, Nov. 10 @ 11:00 A.M.

Open House: Monday, Nov. 3  
3:00-5:00 P.M.  
Auction: Monday, Nov. 10 @ 4:00 P.M.

Open House: Tuesday, Nov. 4, 2003  
3:00-5:00 P.M.  
Auction: Tuesday, Nov. 11 @ 4:00 P.M.



501 Fairgrounds Road, Hatfield, PA 19440 • 800-577-8845 • [www.tranzon.com](http://www.tranzon.com)

595 acres  
300 cow capacity

**Sheriff's Sale**

Freestall Operation  
Milking Parlor

By virtue of a Writ of Execution issued out of the Court of Common Pleas of Bradford County, to me directed and delivered, I will expose to Public Sale at the Bradford County Courthouse in Towanda, PA on

**Wed., October 29, 2003**

Building Lots

at 10:00 o'clock in the forenoon  
the following described property to wit:

Hunting,  
recreational  
lands, farming

Interested buyers may contact FarmCapital, LLC at 585-359-8902

Seized and taken into execution at the suit of M&T BANK, FARMCAPITAL, LLC vs. RUSSELL R. ANDRUS & CAROLYN L. ANDRUS.

**Steven A. Evans, Sheriff**

Sheriff's Dept., Towanda, PA October 8, 2003

**FOR SALE SUNNYBROOK FARM 38 ACRE COUNTRY ESTATE LITITZ, PA**

Immaculate custom executive country home situated on pristine farmland with pasture, stream, woods, deer, pheasants, spectacular sunsets, million dollar views. Exclusively for sale by owner.

**\$795,000**

For questions write to: Owner, 53 E. Main St.,  
Box 5, Lititz PA 17543

24 hour response

Serious inquiries from qualified buyers only, please