

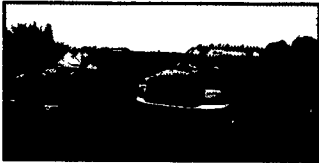
WJM Trucks and Equipment

570/385-5065

If You Need It, We Will Find It For You!

52 ZERBE STREET, CRESSONA PA, 17929
OTHER CONTACT NUMBER: WILLIAM J MILLER JR. 570/617-1351

We Accept All Reasonable Offers



2 Cabin Chassis Ready For Bodies,
2000 Chevy 3500 HD \$13,500
2000 Ford 550 \$23,295



1998 Volvo WG64F, Cummins 330 hp Dsl.
w/Fuller 8LL Trans., Hendrickson 46K
Rears, Rogers 16' Steel Dump, Triaxle
\$48,250



2 24' Vans Ready For Sale,
2000 Ford F650 \$28,795
1999 GMC 6500 \$16,650



1997 Genie Up And Over, 34', Elec. Lift,
OSHA Cert. \$13,250



1992 Fiat Allia FR9B, Wheel Loader,
3 Yd Bkt, Fully Reconditioned,
\$27,000



1999 Isuzu, Stake Body Dump, 5.4 V8, Auto,
Only 24,000 Mi., New Tires
\$22,250



P&H D851 Carry Deck Crane SN60117
Dual Fuel Powered, Equipped with 4 Section 32' Boom, Front
Wheel Drive, 4 Wheel Steer, Anti-Two Block Warning Device,
Electric LMI, Front and Rear Tow Lugs, 8.5 Ton Hook Block,
678 Hours, Headache Ball
\$25,350



2000 Extec 5000S, 3-Way Split Screen
w/Only 621 Hrs., on Deutz Diesel,
also Extra Screens,
\$76,295



1999 GMC W4, Utility Truck, V8 Gas,
Automatic,
\$18,795



2000 Bobcat 864 \$27,875
2002 Cat 266 \$21,585
1990 Case 1845C \$10,700

Other Inventory

- 2000 Multiquip MB25 Electric 1" Rebar Bender..... \$4,250
- Assorted Electric WB Floor Scrubbers..... Call for Pricing
- Other Small Inventory Avail..... Call for Listings
- 1999 Ingersoll Rand 185 CFM Air Compressor, JD Diesel 330 Hrs..... \$7,800
- 2002 Ingersoll Rand 8 KW Generator, Brand New Factory Warranty Diesel Engine..... \$5,200
- 1999 Wecker RT560 WB Trench Compactor, 22" Pad Drums, Remote, 876 Hrs..... \$9,750
- 1993 Target Pro 65 II 4-Cyl. Dsl., 36" Blade, Water Controls, 1000 Hrs..... \$3,250



1997 GMC W4, Cab & Chassis,
\$12,795



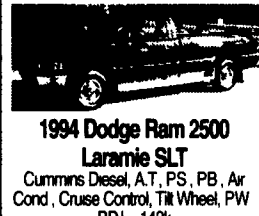
1997 JLG 600S, Low Hrs., Dual Fuel, 68' Working Height, Fully Recond.
\$31,395



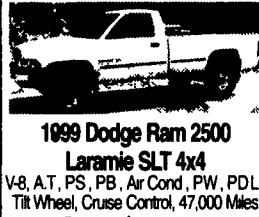
1993 Vermeer 665B Stump Grinder,
Dealer Re-Mfg'd, 0 Hrs,
\$15,250

Meadowbrook Auto Sales

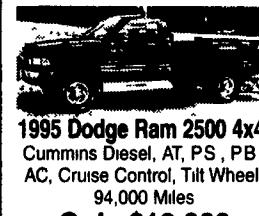
875 Abbottstown Pike, Hanover, PA
717-632-9600 717-633-5789



1994 Dodge Ram 2500
Laramie SLT
Cummins Diesel, A.T., P.S., P.B., Air
Cond., Cruise Control, Tilt Wheel, PW
PDL, 142k
Only \$8,900



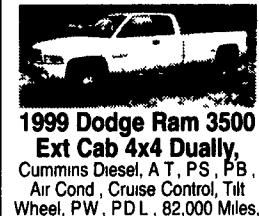
1999 Dodge Ram 2500
Laramie SLT 4x4
V8, A.T., P.S., P.B., Air Cond., PW, PDL
Tilt Wheel, Cruise Control, 47,000 Miles
Only \$15,900



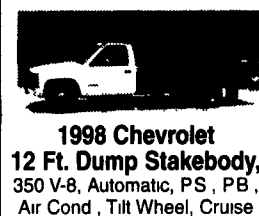
1995 Dodge Ram 2500 4x4,
Cummins Diesel, A.T., P.S., P.B.,
AC, Cruise Control, Tilt Wheel,
94,000 Miles
Only \$13,900



1997 Ford E-350 Cargo Van,
5.4 V-8, Automatic, Air Cond.,
P.S., P.B., 94,000 Miles
Only \$8,900



1999 Dodge Ram 3500
Ext Cab 4x4 Dually,
Cummins Diesel, A.T., P.S., P.B.,
Air Cond., Cruise Control, Tilt
Wheel, PW, PDL, 82,000 Miles,
Super Nice Condition
Only \$22,900



1998 Chevrolet
12 Ft. Dump Stakebody,
350 V-8, Automatic, P.S., P.B.,
Air Cond., Tilt Wheel, Cruise
Control, Dual Rear Wheels,
25,000 Miles
Only \$19,900



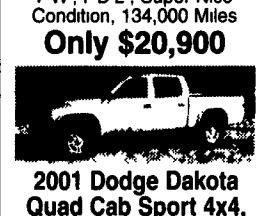
1997 Ford F-350 Utility
Truck Ext. Cab
7.3 Powerstroke Diesel, A.T.,
P.S., P.B., Air Cond., Dual
Rear Wheels, 116,000 Miles
Only \$14,900



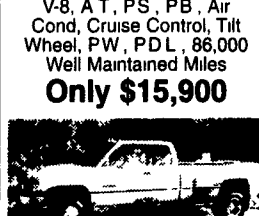
2000 Ford F-250
Ext Cab XLT,
7.3 Powerstroke Diesel,
6 Speed, P.S., P.B., A/C,
PW, PDL, Tilt Wheel,
Cruise Control, 98,000 Miles,
Real Nice Condition,
Only \$21,900



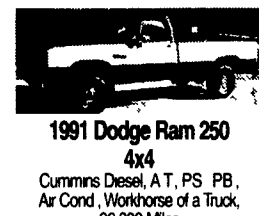
1999 Ford F-250
Ext Cab XLT 4x4,
7.3 Powerstroke Diesel,
A.T., P.S., P.B., Air Cond.,
Tilt Wheel, Cruise Control,
PW, PDL, Super Nice
Condition, 134,000 Miles
Only \$20,900



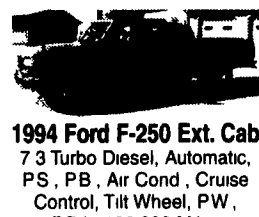
2001 Dodge Dakota
Quad Cab Sport 4x4,
V-8, A.T., P.S., P.B., Air
Cond., Cruise Control, Tilt
Wheel, PW, PDL, 86,000
Well Maintained Miles
Only \$15,900



1995 Dodge Ram 3500
Ext Cab Dually 4x4,
Cummins Diesel, A.T., P.S.
P.B., Air Cond., PW, PDL
Tilt Wheel, Cruise Control
151,000 Miles
Only \$14,900



1991 Dodge Ram 250
4x4
Cummins Diesel, A.T., P.S., P.B.,
Air Cond., Workhorse of a Truck,
96,000 Miles
Only \$9,900



1994 Ford F-250 Ext. Cab
7.3 Turbo Diesel, Automatic,
P.S., P.B., Air Cond., Cruise
Control, Tilt Wheel, PW,
PDL, 126,000 Miles
Only \$9,900



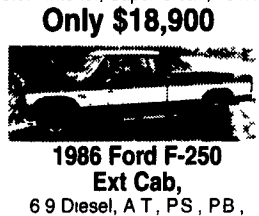
1998 Dodge Ram
Ext. Cab 2500 4x4
Cummins Diesel, A.T., P.S., P.B.,
Air Cond., Tilt Wheel, Cruise
Control, 163,000 Miles
Only \$14,900



1995 Dodge Ram 2500 4x4
Cummins Diesel, A.T., P.S.,
P.B., Air Cond., Cruise Control,
160K
Only \$10,900



1999 Ford F-350 Ext. Cab
4x4 Dually
7.3 Powerstroke Diesel, A.T.,
P.S., P.B., Air Cond., Tilt Wheel,
Cruise Control, PW, PDL,
Cloth Interior, Super Clean, 161K
Only \$18,900



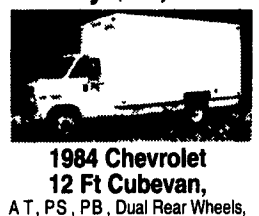
1986 Ford F-250
Ext Cab,
6.9 Diesel, A.T., P.S., P.B.,
Air Cond., Tilt Wheel, Cruise
Control PW, PDL 179K,
Only \$5,900



Stepvans - All Aluminum,
10 ft to 16 ft Single Rear and Dual
Rear Wheels, Aluminum & Manual
Trans., 4 Cyl & 8 Cylinder Diesels,
1350 Gas, Service Records for
Most Many to Choose from
Starting at
\$3,000.00



1996 Ford F-250
Ext. Cab 4x4,
7.3 Powerstroke Diesel,
5 Spd, P.S., P.B., A/C, PW, PDL,
Tilt Wheel, Cruise Control
138,000 Miles, Super Nice condition
Only \$15,900



1984 Chevrolet
12 Ft Cubevan,
A.T., P.S., P.B., Dual Rear Wheels,
Aluminum Body, 153,000 Miles
Only \$3,900



1987 GMC 12 Ft Stepvan,
350 V-8, A.T., P.S., P.B., Dual
Rear Wheels, New Inspection,
150,000 Miles, Nice Condition
Only \$3,900

Binkley & Hurst Bros. Offers.... Eager Beaver. DISCOUNT SALE ON NEW 20-TON HIGH TENSILE TRAILERS



In Stock!!

Don't Miss This One!

Make Your Move To Quality
Eager Beaver From Binkley & Hurst

25 Ton Eager Beaver

Small Enough To Pull Behind Your Dump Truck,
Big Enough To Haul Your Medium Size Excavator,
Only 8 Degree Loading Angle

See Binkley & Hurst Bros. Inc. Today



25XPT EASY LOADER:
25 Ton Capacity Tri-Axle, 8° Degree Loading Angle

- CAPACITY: 50,000 Lbs.
 - Trailer Weight: 11,200 Lbs.
 - Overall Width: 102", Length: 34'4"
 - Deck Height: 34"
 - Deck Length: 22' Flat, 6' Beavertail
 - Ramps: 72" Long x 21 1/4" Wide
- Optional Aluminum Extension Ramps

See Us For 35 and 50 Ton
Detachable Spring or
Air Ride Trailers...
Place Your Order Today!

BINKLEY & HURST BROS. INC.

133 Rothsville Station Rd.
P.O. Box 0395, Lititz, PA 17543-0395
(717) 626-4705 1-800-414-4705
Fax 717-626-0996



NEWLY IMPROVED TRAILER=GREATER VALUE!

New Upgraded Features of the Easy Loader Series



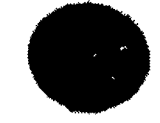
WIRING HARNESS
• 100% SEALED
• USA Star PL"US
POSITIVE LOCK UNDER SEAL)



3-LEAF SUSPENSION SYSTEM
• RATED @ 50,000 LB TANDEM 75,000
LB TRIPLE
• STRONGER
• LONGER LIFE



HUB PILOTED DISC WHEELS
• HIGHER WHEEL RATING
• OUTDOOR DRUMS FOR EASIER MAIN-
TENANCE
• FASTER EASIER MOUNTING
• ELIMINATE WHEEL WOBBLE



L.E.D. LIGHTS
• BRIGHTER WITH NO FILAMENT TO
BURN OUT
• VIRTUALLY UNLIMITED LIFE
• SHOCK ABSORBING CASING

EASY LIFT. What could be easier?

We have improved the design of our trailers to make them easier to use. No other trailer has more features than Eager Beaver. The new design makes the difference. Like our 8-Degree extension ramps, gravity equipment. So when you are thinking about a trailer, think Eager Beaver.



LIGHT WEIGHT WOOD RAMPS

- EASY LIFTING FROM THE GROUND OR OFF THE BEAVERTAIL
- GRADE 80 HIGH TENSILE STEEL 40% LIGHTER
- DOUBLE ACTING SPRINGS

Binkley & Hurst Bros. Inc. EAGER BEAVER TRAILERS

- 10HDB 10 Ton Elec. Brake Tag-A-Long
- 20XPT 20 Ton Air Brake Tag-A-Long
- 25XPT 25 Ton Air Brake Tag-A-Long

Colors:

CAT YELLOW, RED, BLUE, BLACK