

**330 RECREATIONAL VEHICLES**

Mint Condition - Show-room Quality, 2002 Polaris Sportsman 500 ATV w/snowplow & tilt bed tow behind trailer. Used only 1 day (8hrs) to plow snow, Never in dirt, \$6,500. 717-656-0683

Moped Safari, ex cond (814)355-4613

Polaris dsl ATV w/5' snow blade, exc cond, \$4,500. 570-379-2477

**350 TRUCKS / TRAILERS**

1980 Int'l Grain Trk, PS, 18' grain body, heavy duty hoist, gd cond. 26,000 GVW, asking \$3,500 (717)786-1119 evenings

2004 16' gooseneck stock trailer, \$3,950. LanCo, 717-464-3219

1989 Ford F450, Super Duty, 7.3 dsl, 5spd, 13' Steel Flatbed, 14,500 GVW, new tires, one owner, well maintained, 162k, great farm truck, \$3,500 570-925-5073 or 570-256-3154

'00 GMC SL 2500, HD, 3/4 ton, 2WD pickup, 350 auto, PS, PB, cruise, tilt, air, AM/FM cass, 8600 GVW, 159,000 one-owner highway miles, \$6,700. 717-733-2873

Freuhauf 14' steel dump w/wood sides, like new cond, mounted on L700 Ford Looks & runs well \$5800 obo (410)708-1779

1987 F350 L pack mason dump-\$4400 obo; 1977 International dump trk., sgl axle, 60K-\$3300 obo. (201)602-8021.

1985 IH lime spreader, \$10,000 obo. (304)876-6114

Ford LN700 10ft dump, 33,000 GVW, Cat 3208, 2 spd AT. Asking \$5,500 717-940-1882

1985 Ford F350, 6.9 diesel, 4 spd, 252k, gooseneck & receiver hitches, toolbox, runs good,\$5000.717-413-1270

Load trailer, tandem wheel, 7000 GVW, 7'Wx14'L, elec brakes, \$1900 (brand new). Load trailer, 7'x14' tailgate, 3400 GVW, (brand new) \$1250 (610)932-2321

1984 Mack 300, 5 spd, 277K mi. 1979 Montone dump trailer, 28' w/7-1/2' sides, used only for hauling mulch. Both in A1 shape, 410-592-3331

Buy a pre-owned car or truck for auction net + 7% (Manheim online). Eagles Nest Auto Buyers' Agent, Duncannon, Pa. Toll-Free 877-801-2230

97 Ford 350 XLT Pwr Stroke 4x4 PW & PL 130k mi, nice farm truck \$11,800 (717)867-5633

20' shed transport trlr., Roller chain, dbl axle, bat. operated, lk new. \$5,000. (732)693-4164

'85 Iveco Z110 dsl, 12' flatbed, good cond \$3000. (610)370-2156

'85 Mack 16' box, lift gate, PTO, pump & meter, \$6,900 302-368-8494

97 Chev Silverado 4X4 dually, nice cond., 180K mi. No Sunday calls. (717)567-7804

'69 Mack, 18ft grain dump, runs good, inspected. \$6200 No Sunday Calls (717)463-3938

96 Kenworth T800 tri-axle dump, 430/470 Detroit, 8LL trans, 46,000 Eaton Rears, 17.5' J&J Alum body, elec start, 375k mi, \$43,000/obo (610)746-4553

**340 CARS FOR SALE**

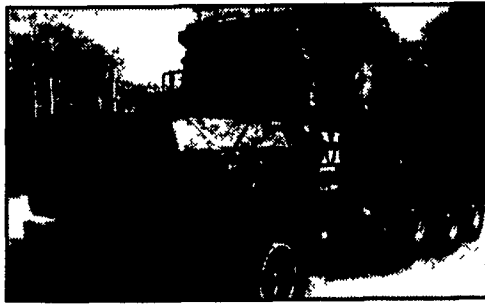
'99 Chevy Monte Carlo LS, 3100 V6, auto, PS, PB, PW, PDL, cruise, tilt, air, Am/Fm/Cass/CD, 29,000 miles, black, \$7,900. 717-733-2873

1996 Chrysler Town & Country, 138,600 mi, 7 pass, 3.8 eng, \$4,900 obo. 717-354-2246

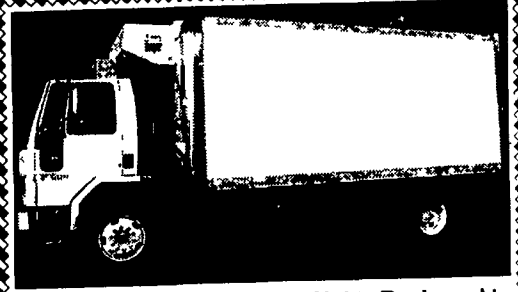
'93 Ford Tempo GL, 4dr, V6 auto, PS, PB, cruise, tilt, air, new tires, 80,000 miles, black, \$1,800. 717-733-2873

97 FD Contour GL 2.0 auto dk blue 87K Nat gas equipped, clean car \$4200 OBO No Sun or after 9pm calls. Call Marlin eve 606-522-3386, or 606-794-6424

**TRUCKS FOR SALE**



(3) 1988-1994 Mack Tri-Axle Dumps: 300 HP Engines, Clean, Low Mileage (610) 670-1957



1994 CF8000, 33,000 GVW, Air Brakes, Air Conditioned, MDII Max Thermo-King, New Engine. Excellent Condition. Call (570) 868-6457 evenings.

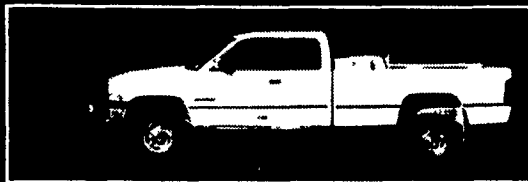
**Pequea Trailer**

8000 lb., 18 ft., ball hitch, like new

Omar Stoltzfus

2442 Creek Hill Rd., Lancaster PA 17601

717-656-8636



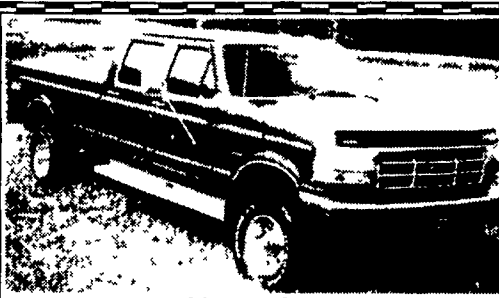
96 Dodge 2500 4x4 Extended Cab, Cummins Diesel, Snow Plow, 150K Miles, White \$13,500

(570) 539-8508

**FOR SALE**



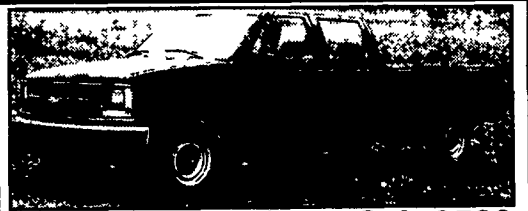
2003 DODGE RAM 2500 CREW CAB 4x4, SLT 6-Speed, Cummins Turbo Diesel, A/C, Most Options, 8 ft. Bed, 22,000 Miles, Blue \$51,500 Call 717-949-2812



1997 F350 XLT Crew cab, power stroke diesel, 4x4, PW, PDL, AC, cruise control, tilt wheel, towing package, bedliner, rollup tarp, 115,000 miles, ex cond \$17,900 570-943-2499 • 570-943-2137 Orwigsburg, PA



1979 Brock, restored & 1975 White, needs clutch VT903 Comm, runs \$3,500 215-536-1880



97 Chevy 4x4 Crew Cab 3500 Cheyenne Vortec 5700 V8, Auto/OD, rebuilt trans., 150,000 miles. \$8,000 obo. Call after 6 pm. 717/362-2021



88 Mack C/C MS300 Midliner Fresh rebuilt engine, 10Sp, Double frame, new paint, New batteries, Nice truck \$4,500 (717) 597-5473



93 Dodge 3/4 Ton Truck Rebuilt 5 Spd, Cummins Tach, Boost, EGT Gauges, Lots of New Parts, Well Worth It, Nice Shape! Lancaster County \$8,400 717/629-6146



MUST SELL 95 Peterbilt Lime Spreader, Hill Trailer On Air Suspension. Great Cond. Will consider separating \$55,000. Call for more details. (717) 721-9066 or 278-3367

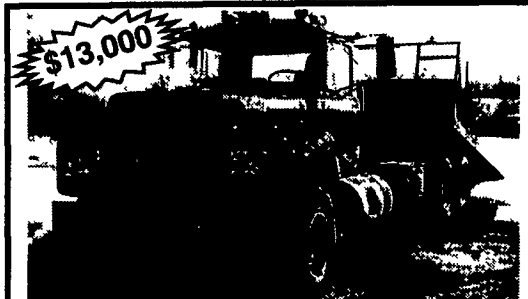
**BID NOTICE**

For SALE of: 1996 Ford F-350 4x4 Dump Truck w/salt spreader, 7.3 LDI Turbo Diesel, auto trans, Gallion dump bed, central hydraulic system, A/C, mileage 54,000

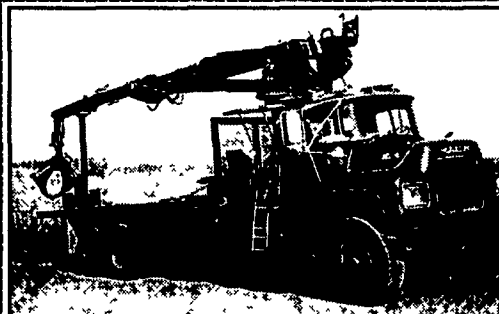
The Borough of Mount Gretna will be accepting bids at the office, 101 Chautauqua Drive, PO Box 61, Mount Gretna, PA 17064 until 12:00 Noon on Friday, November 7, 2003. Bids will be opened and read on Friday, November 7, 2003 at 12:05 PM. Bids will be awarded at the regular meeting of the Borough on November 10, 2003.

Vehicle inspection may be scheduled by contacting the Borough of Mount Gretna office at (717) 964-3231, Monday through Friday between 8:00 AM and 4:00 PM. All bids must be in an envelope clearly marked "Bid Proposal."

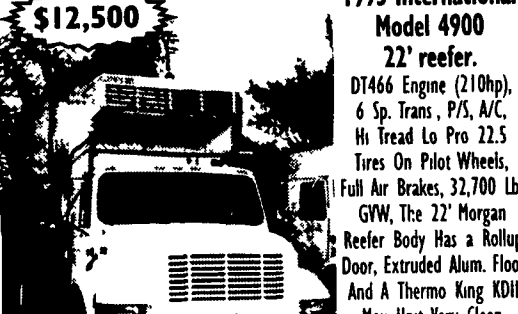
William B. Care, Director of Public Works Mount Gretna Borough, Lebanon County



1985 R-688 Mack, recent rebuild, 350 4-valve, 9 spd., w/25 ft. Jerr-Dan body, (will separate), air ride cab, jake brake, heavy duty winch, Northern, NJ Call Anthony @ 973-560-0034 Cell 609-876-0489



1986 Mack DM237, 6 yrd., 3800 rears, good running truck, 193K miles, \$15,000 obo. 610-858-4092



\$12,500 1995 International Model 490 22' reefer. DT466 Engine (210hp), 6 Sp. Trans, P/S, A/C, Hi Tread Lo Pro 22.5 Tires On Pilot Wheels, Full Air Brakes, 32,700 lb GVW, The 22' Morgan Reefer Body Has a Rollup Door, Extruded Alum. Floor And A Thermo King KDII Max Unit, Very Clean Camden Truck 215-925-0322 856-456-4030



1990 Volvo FE6-13; 5 speed; Turbo Diesel; PTO, A/C, 30,000 GVW, Will take 18' Bed \$3,500/OBO 610/488-8696 LM.



\$3,000 94 Ford F150XL AT, Overdrive, 6 cycle, 115,000 Miles, Air, ABS Brakes, Airbag, Steel Flat Bed, New PA Inspect., New Tires, Nice Clean Truck. Will Take Trade On 1 Ton Truck (717) 597-5473



\$6,500 1989 Ford LTS 8000 Tandem Axle Chassis & Cab, 7.8 Ford diesel engine (240 hp) 9509, 9sp trans, 56,000 lb GVW, P/S, double frame, hi tread 11R22.5 tires on cast spoke wheels, excellent condition Camden Truck 215-925-0322 856-456-4030

