

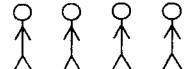
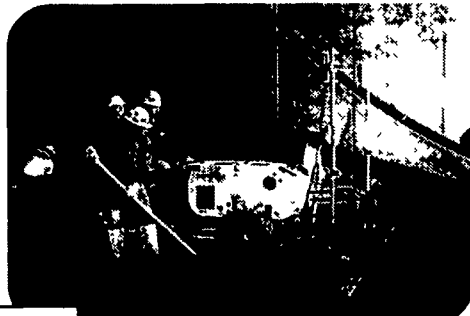
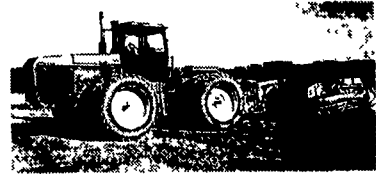


Faster  **Flatter**  **Fewer** 

- Copperhead your concrete
- Laser controlled height
- 10' vibrate screed
- Buy or rent
- Rent with operator



Call Marvin Stoltzfus
(717) 442-8970 ext. 308
e-mail marvs@gappower.com



JD 8870, PS, Duals, 350 HP, with 99 Reynolds 17 Yd Pan **\$70,000**



Bomag BW210 84" Vibratory Roller **\$16,000**



94 Lull 644 Forklift, JD Diesel, 34' Reach **\$21,500**



99 Vermeer Mdl. V-3550A, Trencher, 4x4, Diesel, Backfill Blade, Only 575 Hrs **\$11,500**



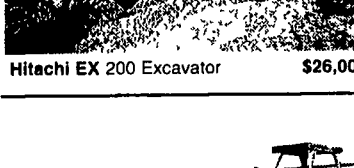
JD 670 Grader, Scarifier 12' Blade, Exc Cond **\$18,000**



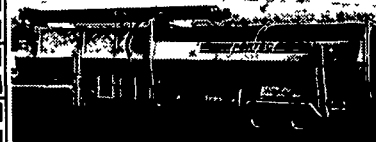
Hitachi EX 200 Excavator **\$26,000**



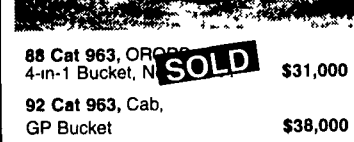
94 Gradall 544 Forklift, 10,000 lb Capacity, 48' Reach w/Forks, Bucket, Truss Boom **\$33,000**



88 Cat 963, OROPS 4-in-1 Bucket, New **SOLD** **\$31,000**



94 Portec 7221 Trommel Screener, Cummins Diesel Stacking Conveyor, 2 Sets Screens **\$38,000**



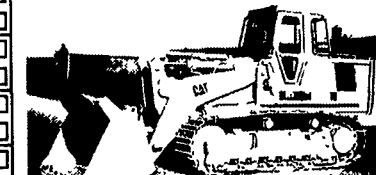
86 Cat D5H, Good Undercarriage Tight Blade **\$39,000**



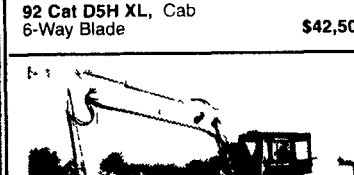
88 Kenworth T600 **\$10,000**



92 Cat D5H XL, Cab 6-Way Blade **\$42,500**



89 CAT 973 GD UC, CAB 4-in-1 Bucket **\$42,000**
18' Tandem Axle Tilt Bed Tag-Along Air Brakes **\$3,500**



Cat E120B Excavator **\$23,000**

Cat D5B, Cab, LGP, Straight Blade w/Tilt **\$17,000**

73 Mack U600, Dump Bed Good Rubber **\$6,000**

JD 450E Dozer, 6-Way **\$17,500**

PAVING EQUIPMENT

Hyster 350C Roller **\$5,000**

Stone Wolfpack 2500 double drum asphalt roller **\$2,500**



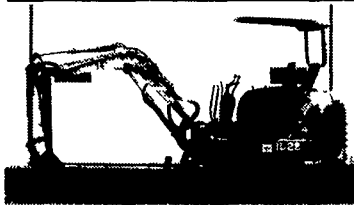
97 Cat D6M XL, 9 460 Hrs 6-way blade fingertip steering **\$62,500**



1993 Cat 963 cab, 11 500 Hrs **\$49,000**
87 Cat 963, OROPS 5 970 Hrs 75% U C **\$34,000**
85 Cat 963, OROPS Good U C GP Bucket 70% U C **\$29,000**



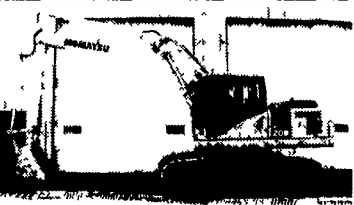
01 Cat 246, 410 Hrs, nice cond **\$19,500**
00 Case 1840, 975 Hrs New Tires **\$12,500**
97 NH LX865, 1,520 Hrs **\$10,900**



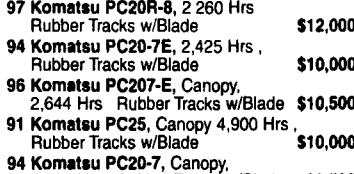
97 Komatsu PC20R-8, 2 260 Hrs Rubber Tracks w/Blade **\$12,000**



NEW ADDITIONS
97 JD 455G Series V, ROPS 4 900 Hrs 60% UC 3" Valve new paint **\$25,000**
00 Cat 236, 1 280 Hrs track buckets & forks **\$17,500**
01 ASV Positrack 4810, 1 060 Hrs **\$26,000**
94 Link belt LS 2700C-2, 3 850 Hrs manual quick coupler good cond **\$33,000**
91 Case 1840 **CALL**
75 JD 644B Cab, 6,305 Hrs 50% tires **CALL**



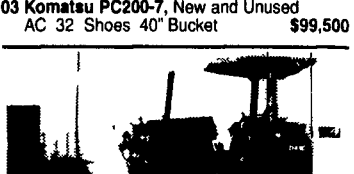
03 Komatsu PC200-7, New and Unused AC 32 Shoes 40" Bucket **\$99,500**



94 Komatsu PC20-7, Canopy, 2,830 Hrs, Rubber Tracks w/Blades **\$9,500**



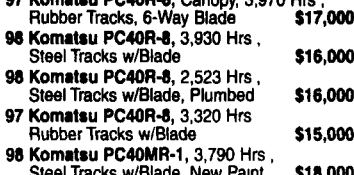
97 Komatsu PC40R-8, Canopy, 3,970 Hrs, Rubber Tracks, 6-Way Blade **\$17,000**



98 Komatsu D41P-6LGP, 5,320 Hrs, 75% U C, 6 Way Blade **\$33,000**

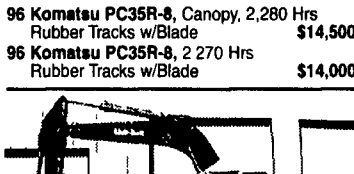


96 Komatsu PC35R-8, Canopy, 2,280 Hrs Rubber Tracks w/Blade **\$14,500**

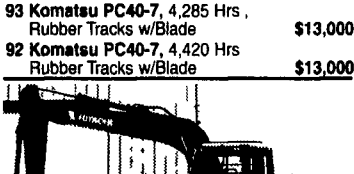


98 Komatsu PC40R-8, 2,523 Hrs, Steel Tracks w/Blade, Plumbed **\$16,000**

86 Fiat Allia FD5, OROPS, 5,000 Hrs, 6-Way Blade **\$15,500**



80 Link Belt LS3400, Joy Stick Controls, 10'4" W 53,000 Lb **\$12,500**

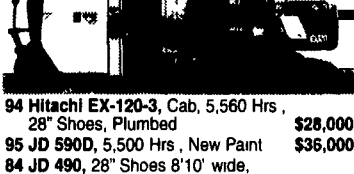


98 Komatsu PC40MR-1, 3,790 Hrs, Steel Tracks w/Blade New Paint **\$18,000**

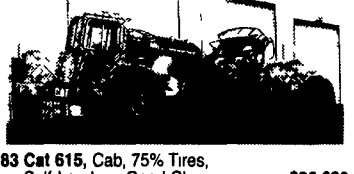
87 Fiat Allia FD5, Canopy, 60% U C **\$13,500**



96 Komatsu PC35R-8, 2 270 Hrs Rubber Tracks w/Blade **\$14,000**



94 Hitachi EX-120-3, Cab, 5,560 Hrs, 28" Shoes, Plumbed **\$28,000**



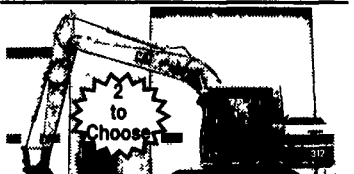
81 Dresser TD12, Canopy, 80% U C Straight Blade w/Tilt **\$24,000**



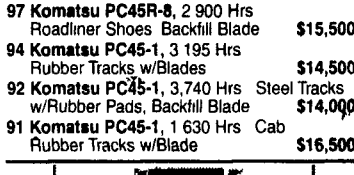
96 Komatsu PC45-1, 3 195 Hrs Rubber Tracks w/Blades **\$14,500**



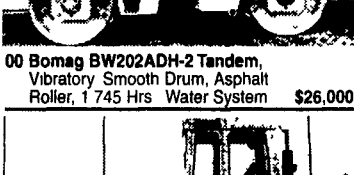
95 JD 590D, 5,500 Hrs, New Paint **\$36,000**



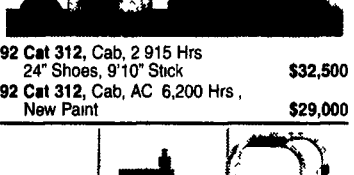
92 Cat 312, Cab, 2 915 Hrs 24" Shoes, 9'10" Stick **\$32,500**



91 Komatsu PC45-1, 1 630 Hrs Cab Rubber Tracks w/Blade **\$16,500**



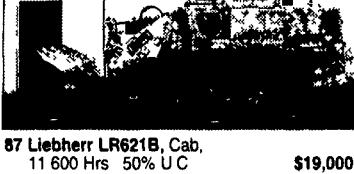
00 Bomag BW202ADH-2 Tandem, Vibratory Smooth Drum, Asphalt Roller, 1 745 Hrs Water System **\$26,000**



92 Cat 312, Cab, AC 6,200 Hrs, New Paint **\$29,000**



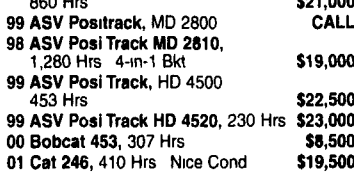
99 ASV Posi Track MD 2810, 860 Hrs **\$21,000**



87 Liebherr LR621B, Cab, 11 600 Hrs 50% U C **\$19,000**



79 Int'l 125E, 5,370 Hrs 75% U C **\$11,500**



99 ASV Positrack, MD 2800 **CALL**



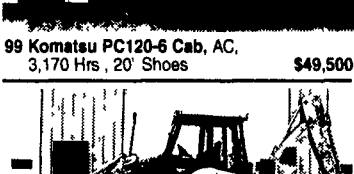
99 Komatsu PC120-6 Cab, AC, 3,170 Hrs, 20" Shoes **\$49,500**



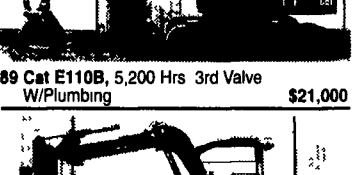
74 Cat 931, Rops **CALL**



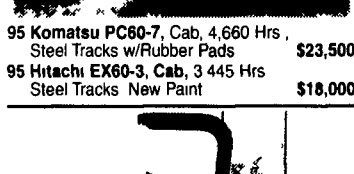
95 Komatsu PC60-7, Cab, 4,660 Hrs, Steel Tracks w/Rubber Pads **\$23,500**



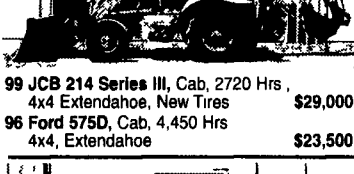
99 JCB 214 Series III, Cab, 2720 Hrs, 4x4 Extendahoe, New Tires **\$29,000**



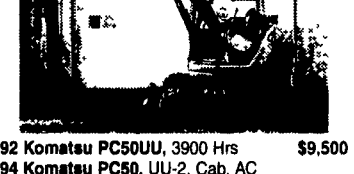
89 Cat E110B, 5,200 Hrs 3rd Valve w/Plumbing **\$21,000**



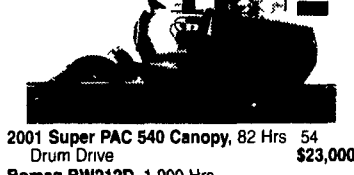
95 Hitachi EX60-3, Cab, 3 445 Hrs Steel Tracks New Paint **\$18,000**



96 Ford 575D, Cab, 4,450 Hrs 4x4, Extendahoe **\$23,500**



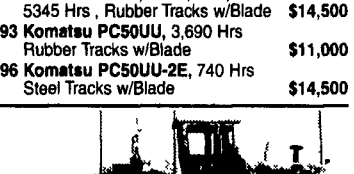
92 Komatsu PC50UU, 3900 Hrs **\$9,500**



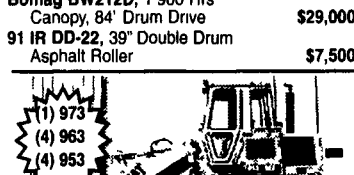
2001 Super PAC 540 Canopy, 82 Hrs 54 Drum Drive **\$23,000**



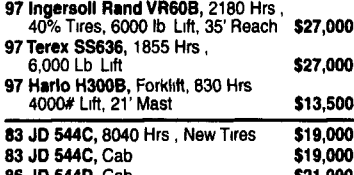
94 Komatsu PC50UU, 3,690 Hrs Rubber Tracks w/Blade **\$11,000**



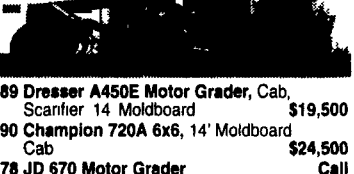
96 Komatsu PC50UU-2E, 740 Hrs Steel Tracks w/Blade **\$14,500**



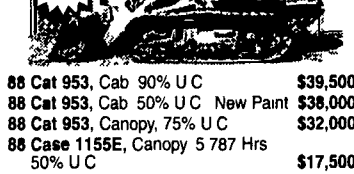
88 Cat 953, Cab 90% U C **\$39,500**



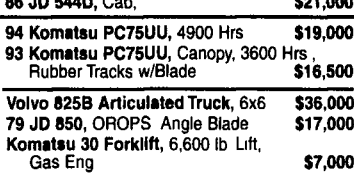
97 Terex SS636, 1855 Hrs, 6,000 Lb Lift **\$27,000**



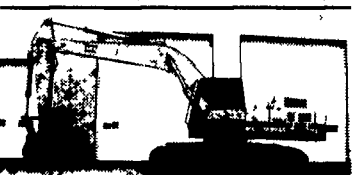
89 Dresser A450E Motor Grader, Cab, Scarifier 14 Moldboard **\$19,500**



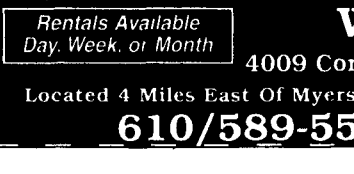
88 Cat 953, Cab 50% U C New Paint **\$38,000**



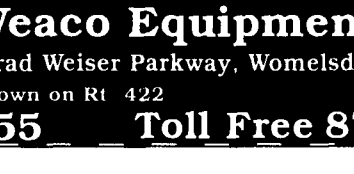
Volvo 825B Articulated Truck, 6x6 **\$36,000**



90 Champion 720A 6x6, 14' Moldboard Cab **\$24,500**



88 Case 1155E, Canopy 5 787 Hrs 50% U C **\$17,500**



91 Komatsu 30 Forklift, 6,600 lb Lift, Gas Eng **\$7,000**



87 MDI Yutani, MD300, 5580 Hrs 32 Shoes, 10' Stick **\$18,000**



88 Ford F350 Dually, Mechanics Body Crane, Electric Lift Gate New Motor New Tires **\$6,900**

Rentals Available Day, Week, or Month

Weaco Equipment

4009 Conrad Weiser Parkway, Womelsdorf, PA 19567

Financing and Lease Purchase Available No Sunday Calls

Located 4 Miles East Of Myerstown on Rt 422 sales@weacoequipment.com

610/589-5555 Toll Free 877/529-9328

Weaver's Equipment Sales

RD#1, Box 418, Milton, Pa. 17847
Phone: 570/523-9598