

BUSINESS NEWS

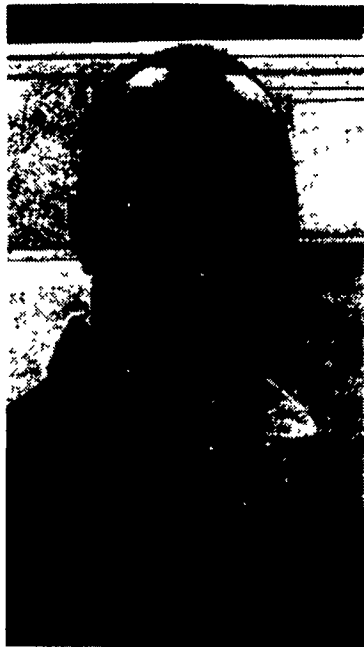
Witmer Expands Product Offerings

SHIPPENSBURG (Cumberland Co.) — Witmer Implement Service, Inc. of Shippensburg is pleased to announce a recent addition to their line of quality agricultural products. Witmers is now a regional distributor of Farmer Ltd. Ventilation Systems, specializing in natural ventilation.

Since 1980, Farmer has been providing quality ventilation systems for all types of livestock production across North America.

Larry Frey has been given the responsibility at Witmers to grow and expand the Farmer product line. Frey has been employed at Witmers since June 1998 and has over 16½ years in agricultural related sales and service.

Witmer Implement Service, Inc. is committed and ready to meet the vital need of providing increased quality and profitability of dairy, swine, poultry, and



Larry Frey

equine production through proven ventilation systems..

Haney Receives Professional Certification

SHIPPENSBURG (Cumberland Co.) — Michelle L. Haney, an Agway Bagged Feeds equine feed specialist, has been approved as an associate member of the American Registry of Professional Animal Scientists (ARPAS).

Haney, a resident of Bethlehem, has met all the qualifications for certification in her area of specialization, horses.

As an equine feed specialist, Haney works with horse owners, breeders, and trainers in New Jersey to develop the best feeding program for their animals. She also works with Agway feed dealers on equine nutrition issues.

Haney is a graduate of Delaware Valley College in Doylestown, where she majored in Large Animal Science and minored in Pre-Veterinary Medicine. She's been riding horses since she was seven years old.

"We are proud to have equine feed specialists like Michelle who take the time to improve their skills and continue to learn," said Paul S. Mikosky, the Agway Bagged Feeds' manager of dealer relations and sales. "Michelle's recent certification as a member of the American Registry of Professional Animal Scientists is a testament to the dedication she has to keeping her clients updated and informed about issues related to animal agriculture."

Kuhn Knight Introduces Spreader



BRODHEAD, Wis. — Kuhn Knight, Inc. has introduced the new model 1159 box spreader.

It has a 590 heaped cubic foot capacity and features a hydraulic drive, dual apron with pintle chain, and two 20-inch diameter rooster-comb beaters with replaceable beater paddles.

The beater assembly can be easily removed when stockpiling manure. Six box spreader models are available from 320 to 700 heaped cubic foot capacities.

New Titan Model Offered For Planters

COLCHESTER, Ill. — The second model in the lineup of the all-new Titan Series mounts directly to the faceplate of the planter unit. The real benefits are faster soil warm up and elimination of row unit bounce for proper seed placement, which set the stage for better seed emergence. Quicker uniform emergence is what drives yield potential for a rapid return on investment.

For double duty operations the Titan provides ample space to mount a wide range of attachments directly to the face of the planter unit such as no-till coulters and fertilizer openers.

All Titan models are constructed of high yielding steel, the heavy duty 2.5-inch residue manager arms have field proven strength and durability to keep the 13-inch heat treated residue manager wheels running through the toughest and most severe residue conditions.

BUY, SELL, TRADE OR RENT THROUGH THE
CLASSIFIED ADS
 PHONE: 717-626-1164 or 717-394-3047
 FAX 717-733-6058
 Mon., Tues., Wed., Fri. 8 AM to 5 PM, Thurs 7 AM to 5 PM

15 CONSTRUCTION EQUIPMENT

Allis Chalmers HD4 crawler loader, rebuilt injector pump, injectors & starter, runs good, track pins & bushings tight from sitting. Asking \$2250 (609)585-3876 after 5pm

2" Diaphragm mud pump, like new, \$550 (717)786-1232

1981 bucket truck, 45' reach telescoping boom w/side compartments, auto trans, white, \$15,000. Ask for Jim, 717-939-4888.

Forklift Mast, 6,000#, w/side shift and forks, \$400; (2) 8.25x15 cushion tires, 6 bolt, \$125; 10,000# Lull sideloader lift truck, travel ldr, 6' fork, \$1,000 (717)362-9111

JD 310C 4x4 backhoe, exc cond, all new rubber, under 3,000 hrs, \$30,000 Call eves, 717-776-4521

Ford 4500 loader backhoe, dsl \$4,900, nds eng tune-up. (610)383-5136, Chester Co.

1995 Ford F700 dump trk, 26,000 GVW, no CDL req 17k mi, \$19,500 (610)754-7760

Manuals Parts/Service/Operators: Caterpillar, Case, International, Fiat, Komatsu—too many to list. Call Heavy Equipment Loader Parts, 717-469-0039, fax request 717-469-7679, email helpinc@comcast.net

Wanted: used winch for Case 450C dozer 570-836-3752

1967 Clark forklift, propane, solid tires, 5,000 lb, standard shift, \$700. 570-875-3540 ask for Mick

1983 D6D LGP, 90% U/C, 125 hrs, rebuilt trans & torque, new steering clutches, tight-straight blade-tilt, \$38,500 obo 609-655-2281

Ford L9000 Dump truck-cntrl hyd. 10' bed pintel w/air & elec to rear L10 Cummins 240hp, 7 spd, new insp. \$4,800 OBO; 11' power angle plow available-\$1,500 OBO (717)629-1370.

JCB-530 Load-all forklift, serial #580337, nds. paint. \$8,000. (908)638-8668

1977 JD 544B articulating rubber tire loader w/48' forks & bucket, dsl engine, Good rubber, cab/H, block heater, Very nice cond. Ask for Mick (570)875-3540

WESTERN ALFALFA for sale, 3x4 sq dairy quality Delivery avail Bernard Wrede, (800)786-9794 mobile (402)649-0661, email. wrede@ptcnet.net

1989 JD 755B crawler/ldr, 2-1/4 cy bucket, 1 owner, \$12,000 717-334-7086

JD 410 Backhoe, OROPS, stdn hoe, gd cond \$7500 (610)932-5576

Case 530 gas, ldr & backhoe, runs & drives OK, \$6,500 (570)286-7851

(2) Stow mudmixers, (2) baggers, 8hp Hondas, 2-3 y/o, \$800-\$1000 obo Call Dan (717)629-0802

'99 JCB 214-3, 4wd, cab, w/heat, 24" Q/C bkt, plumb, extendable hoe, 2800 hrs, \$29,000 (717)903-1355 anytime

Lull telescopic forklift, 4x4x4, hyd leveling, 2 sec boom, 32', 8,000 lb, \$12,000 obo Evenings 610-932-5877

Cat D5B dozer, power shift, good U/C, \$14,750 Cat 963, ldr, w/cab, \$21,500. 717-445-6156

(2) 22,500 gal. used tanks, 36' long 10'6" dia. suitable for incinerator, sawdust storage, manure storage, culvert pipe, etc. (570) 425-2341 days (570) 425-2285 eves After 7 PM

JOHN DEERE 7775 w/65" Bucket, Aux.
 Hydraulics, Good Working Condition .. \$9,250
GEHL 4615 w/65" Bucket, Aux. Hydraulics with Hi-flo Pump. Good Working Condition. .. \$7,250
SUNNY ACRE SALES
 R.D. #2 BOX 266, TYRONE, PA 16686
 814/742-8202 or 814/742-7303

Toyota Forklifts
 5000 lb, LP Gas, 80" Lift, Good Cond.
\$3,200/OBO
717/532-6367

2001 TOYOTA FORKLIFT

5000 lb., 700 hrs. with air tires or solid rubber. Excellent condition.
\$15,900
717•284•1035

INDUSTRIAL EQUIPMENT INC.
 215 South Washington Street, Boyertown, PA 19512

FORKLIFTS
 SALES * SERVICE * RENTALS
 NEW KOMATSU FORKLIFTS
 ALL BRANDS USED/RECONDITIONED
 GAS * LP * DIESEL * ELECTRIC
 PARTS & SERVICE FOR ALL BRANDS
 AERIAL & SCISSOR LIFTS FOR SALE & RENT
 LEASING AVAILABLE
 SPECIAL - NEW 27 x 48 PALLET JACKS \$350.00

MasterCard VISA
 PHONE (610) 369-9778 FAX (610) 369-9858

Mid Maryland Rentals, Inc. www.midmd.com
 8865 Baltimore National Pike P.O. Box 186 Middletown, MD 21769 Phone: (301) 371-5500 Fax: (301) 371-9299 sandy@midmd.com

Financing Available

 1990 Komatsu PC200LC5, 30" bucket, hammer, circuit, rebuilt engine & pumps, work ready \$29,500	 1999 Kobelco SK135LC, 31,000lb excavator, cab/ac, 42" bucket, 0 swing tail, v g u/c & condition, work ready \$47,500	 1988 Cat 953, cab, gp bucket w/teeth, v g undercarriage & condition, work ready \$42,500
 Telescopic Forklifts, Lull, Terex, 5,000-10,000 lbs, from \$16,500	 1994 John Deere 490E, 36" bucket, auxiliary hydraulics, recent undercarriage, v g condition, work ready, \$32,500	 1992 Hyster C830B, 66" smooth drum, drum drive, cab w/AC, v g tires & condition, work ready, \$24,000

- 1998 Bobcat 863F, gp bucket, auxiliary hydraulics, new tires, work ready \$13,000
- 1994 Case 580SK, cab, 4 wheel drive, e-stick, v g tires & condition, work ready \$25,000
- 1992 Cat 416B, 4 wheel drive, cab, e-stick, v g tires & condition, work ready \$25,500
- 1987 JCB 1400B, cab, 4 wheel drive, v g tires, fresh paint, work ready \$17,900
- 1989 John Deere 455G, OROPS, 4-1 bucket w/teeth, pedal steer, v g undercarriage & condition, 3,900 original hrs, work ready \$24,000
- 1998 Linkbelt 2700Q, 42" bucket, vg undercarriage, fresh paint \$43,500
- Scattrak 1500D, gp bucket, auxiliary hydraulics, Kubota turbo diesel, v g tires & condition, 700 hrs \$13,000