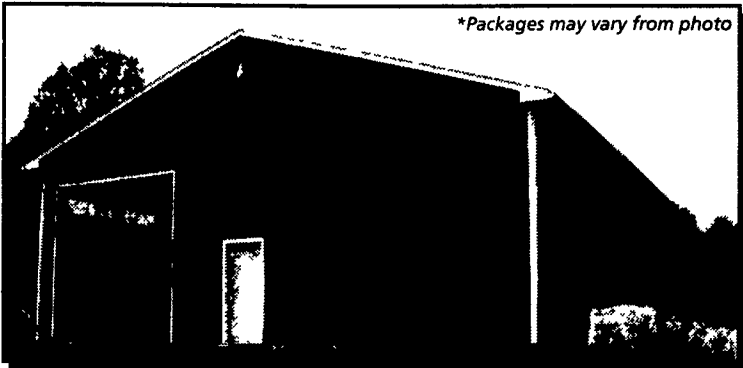


CARTER LUMBER

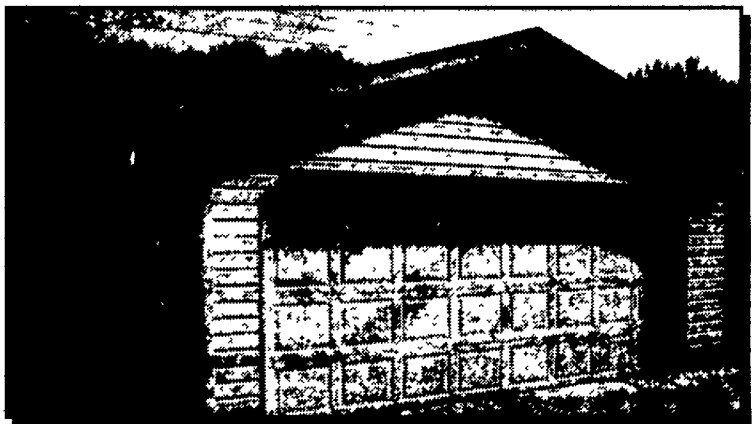
Pole Barns & Garages



*Packages may vary from photo

Painted Steel Siding w/ sliding door	8' HIGH 24' x 24'	10' HIGH 30' x 40'	12' HIGH 40' x 64'
25 yr. Painted steel roof	\$2,835	\$4,975	\$10,586

* Also available in T1-11 and vinyl - customize your pole building



	1 CAR	2 CAR	
Standard	18' x 22'	22' x 24'	26' x 24'
VINYL SIDING	\$2,957	\$3,576	\$3,973

* Also available in basic & premium packages & many other sizes

FREE COMPUTER DESIGN

Any size, any style, any design. Check your local Carter Lumber store or carterlumber.com for an estimate.

STANDARD FEATURES

•24', 30', 40' widths x any length •Treated posts & skirt boards •2" x 4" wall girts •T1-11, metal or vinyl siding (24' & 30' wide only) •Truss w/1' eave overhang & soffit •25 yr. O.C. Fiberglas® shingles on 7/16" OSB sheathing or Fabral® metal roofing • Sliding or overhead door w/hardware • Optional 3' steel passage door • Nails, trim & plans • 40' barns available 14' high

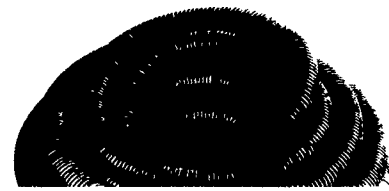
FREE COMPUTER DESIGN

Any size, any style, any design. Check your local Carter Lumber store or carterlumber.com for an estimate.

STANDARD FEATURES

•16" O.C wall framing w/ treated bottom plate •Siding •Roof truss w/1' eave overhang & soffit •1/2" OSB roof sheathing •15# felt •25 yr. O.C. Fiberglas® shingles •Ridgevent •Eave & gable drip edge •CSE-100 3/0 man door •9100 series garage door (insulated) • Also includes nails, hardware, plans & instructions

Field Drain Tile



Beaughman Tile Co.

♦Solid or perforated	\$18¹⁹
4" x 100'.....	(9504-solid / 9542-perf)
4" x 250'.....	\$45⁴⁹
	(9500-solid / 9502-perf)

Metal Roofing



♦Custom lengths available ♦White in stock ♦19 colors to choose from ♦36" actual coverage ♦30 year warranty

PAINTED GRANDRIB 3	GALVANIZED GRANDRIB 3
\$153 per ft.	\$121 per ft.

Trusses



24' SUPER TRUSS
♦4/12 pitch with 1' overhang ♦Good for 4' on center at 30 lb. live load. Check local listing codes (15575)

\$32⁹⁹

Dimension Lumber

♦We stock quality lumber in large quantities ♦Contact your local Carter Lumber for available species ♦Hem Fir or Doug Fir available in 22', 24' and 26'

	10'	12'	14'	16'	18'	20'
SPF 2" x 4"	\$2 ⁹⁶	\$3 ⁵²	\$4 ²⁵	\$5 ²⁸	\$6 ³⁶	\$7 ⁰⁹
SPF 2" x 6"	\$4 ⁶⁵	\$5 ¹⁶	\$5 ⁸¹	\$7 ²⁸	\$8 ⁹⁵	\$9 ⁷⁸
SPF 2" x 8"	\$5 ⁴³	\$7 ³⁶	\$7 ⁹⁵	\$9 ⁷⁷	\$12 ¹²	\$14 ¹³
SPF 2" x 10"	\$6 ⁸⁷	\$9 ⁵⁶	\$12 ³²	\$13 ⁹⁷	\$15 ³⁰	\$15 ⁶⁷
SPF 2" x 12"	\$12 ⁰⁰	\$13 ⁶⁸	\$15 ⁶⁰	\$19 ⁵⁸	\$25 ²⁰	\$28 ⁰⁰

Treated Lumber

♦All of our treated lumber is quality grade stamped and carries a limited lifetime warranty against rot & decay ♦Southern Yellow Pine

	8'	10'	12'	14'	16'
#2 2" x 4"	\$2 ⁷⁹	\$3 ⁸⁹	\$4 ⁵⁹	\$5 ⁸⁹	\$6 ⁸⁹
#2 2" x 6"	\$3 ⁵⁹	\$5 ¹⁹	\$6 ⁴⁹	\$7 ³⁹	\$9 ⁵⁹
#2 2" x 8"	\$5 ⁶⁹	\$8 ³⁹	\$10 ¹⁹	\$11 ¹⁹	\$13 ⁶⁹
Standard 5/4" x 6"	\$3 ⁹⁹	\$4 ⁸⁹	\$5 ⁹⁹	\$6 ⁸⁹	\$8 ⁹⁹
4" x 4"	\$5 ¹⁹	\$8 ³⁹	\$9 ¹⁹	\$9 ⁴⁹	\$11 ⁸⁹

HOURS: Mon. thru Fri. 7:30-6:00 • Sat. 7:30-4:00 • Sun. 9:00-3:00

Good 10/26 thru 10/31/03

LANCASTER

LBR. (717) 397-4829 / FAX (717) 397-4865
(Closed Sunday)

ELIZABETHTOWN

LBR. (717) 367-1886 / FAX (717) 367-3858
PEH. (717) 367-7707

CARLISLE

LBR. (717) 245-0404 / FAX (717) 245-9361
PEH. (717) 245-2486 / FAX (717) 245-0295

CHAMBERSBURG

LBR. (717) 263-0822 / FAX (717) 263-7077

NORTHUMBERLAND

LBR. (570) 473-8311 / FAX (570) 473-7149



Visit us online at carterlumber.com