

Public Auction Register

Closing Date Monday 5:00 P.M.
of each week's publication

Internet Sale Register will be updated
by Friday at 12 Noon

ATTENTION AUCTIONEERS
All sales register info needs complete address,
street, town, county & state.

WED NOV. 28 - Farm equip. & antique tractors by Wolgemuth Auct Dennis Wolgemuth #2357, 717-656-2947

FRI NOV 28 - 6PM Mule Sale, New Holland Sales Stables, Inc., 61L, 717-354-4342

THURS./FRI./SAT. OCT. 30/31/NOV. 1 5PM, 8AM, 8AM respectively, 3-day auction Verizon equip, retaining/patio blocks, tools, mach, farm vehicles/equip at Hagerstown, MD at Cochran Auct Complex 301-739-0538, 1-800-310-2844.

DECEMBER

WED DEC 3 - Lumber & bldg supplies by Wolgemuth Auct Dennis Wolgemuth #2357, 717-656-2947

WED. DEC 3 - 6:30PM Toys & collectibles at 100 W Jackson St., New Holland, PA by Diefenbach Auct AH000145L 717-355-7253

FRI DEC 5 - 6PM Horse Sale, New Holland Sales Stables, Inc., 61L, 717-354-4342

SAT DEC 6 - Catalogued antiques & collect auction by Ziegler Auct AH081-L 717-533-4267.

SAT. DEC 6 - 9AM Mel's Stables Horse Sales - Auctioneer, 834 Wallace

Rd., New Holland, PA 17557; Home 717-354-8397; Barn 717-354-6431.

TUES. DEC. 9 - Christmas goat, lamb & sheep sale, receiving begins at 9AM until 5PM; at Carlisle Livestock Market Inc., 548 Alexander Spring Rd., Carlisle, PA; Mkt. ph. 717-249-4511; Buyer's ph. 717-249-0396.

FRI. & SAT., DEC. 19 & 20 - 10AM Utility trucks & equip, passenger vehicles, trucks, construction & farm machinery. 1450 New York Ave, Wilmington, DE 302-573-5005. Nationwide Auction Sys.

TUES. DEC. 10 - 9AM Public auct for Capital Self Storage. Call for locations. B.J. Jennings AU-003910 717-268-0020.

THUR. DEC 11 - Lumber & bldg. supplies by Wolgemuth Auct. Dennis Wolgemuth #2357, 717-656-2947.

FRI DEC 12 - Winter consign. auct. of farm mach., law/garden, vehicles, tools, misc. Cochran Auction Complex.

FRI DEC 12 - 9AM Equipment at 100 W Jackson St., New Holland, PA by Diefenbach Auct. AH000145L 717-355-7253.

FRI DEC 12 - 1PM State Graded Feeder Pig Sales Carlisle Livestock Market, Inc., 548 Alexander Spring Rd., Carlisle. Mkt. ph. 717-249-4511; Buyer's ph. 717-249-0396.

SAT DEC. 13 - 9AM Building Material Auction. 8803 Pulaski Hwy., Rosedale, MD, Whirlpools, tubs,

kitchens, flooring, etc. Winks Building Supply 410-574-1170.

TUES. DEC. 16 - Christmas goat, lamb & sheep sale, receiving begins at 9AM until 5PM; at Carlisle Livestock Market Inc., 548 Alexander Spring Rd., Carlisle, PA; Mkt. ph. 717-249-4511; Buyer's ph. 717-249-0396.

FRI. & SAT., DEC. 19 & 20 - 10AM Utility trucks & equip, passenger vehicles, trucks, construction & farm machinery. 1450 New York Ave, Wilmington, DE 302-573-5005. Nationwide Auction Sys.

WED. DEC. 24 - Christmas Eve - No Sales. New Holland Sales Stables, Inc., 61L, 717-354-4342.

THURS. DEC 25 - Christmas Day - No Sales. New Holland Sales Stables, Inc., 61L, 717-354-4342.

SAT. DEC. 27 - Selling for Antietam tractor, recent trade in of farm tracts, farm equip, other items, nearer Lettersburg, MD by Cochran Auct

TUES. DEC 30 - Fed Cattle Sales Carlisle Livestock Market, Inc., 548 Alexander Spring Rd., Carlisle. Mkt. ph 717-249-4511; Buyer's ph 717-249-0396

GENE-MAR FARMS

Registered and Hi-Grade
Holstein Milking Herd and
Bred Heifer Disposal

THUR., OCT 23, 2003 11:00 A.M.
Mifflinburg, PA

Directions: Union County, PA - follow Route 45 east of Mifflinburg to Mifflinburg Farm Supply, turn onto Buffalo Creek Road, go 1/4 mile to RR crossing, at crossing turn left - proceed to farm.

55 Holsteins - 45 Registered - 10 Hi-Grades

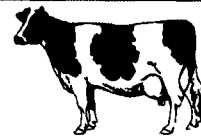
A free stall parlor herd of 45 mature milking animals with excellent stature, feet, legs and udder character consisting mostly of first, second and third lactation cows with several projected to milk 20,000 pounds or better. This herd is bred to freshen between February and October, 12 sell recently fresh and 5 due in October. Sires with dams selling include Plunk, Indy, Pearsius, Aspen, Dark Star, Tesk Richard, Jackson, Granite, Dream, Balboa, Alf, Marlow, Gemstar, Sinbad, Blitz, Sultan, Barber, Judge, Fleet and Megastar. Service Sires include 29H11066, 29H11159, 29H11105, 9H2394, 7H7364 and 7H6250, anything serviced after August 12 bred with the herd bull. A closed herd with Dairy One and DHIA records back to 1950. Also selling 10 bred heifers sired by Benedict, Patron, Alero, Merlin, 9H2608, 9H2299, 9H2246, bred from 5-7 months. All animals vaccinated with 9-way vaccine. If you need disease-free replacements, plan now to attend. Tent if inclement weather. Catalog sale day.

Bryan D. Imes & Sons
Auctioneers
R R 1 Box 902, Port Royal, PA 17082
AU-001656-L
717-527-2449

GENE-MAR FARMS
Lee E. & Kathy Spangler
233 Buffalo Creek Road
Mifflinburg, PA 17844-9674
570-966-0882

Dairy and Livestock Sales

NEW HOLLAND SALES STABLES, INC.



New Holland, Pa.
Located 12 Miles East of Lancaster, just off Rt. 23

DAIRY SALE - WEDNESDAY, OCT. 22, 2003

10:00 AM BRED HEIFERS, SHORTBREDS & OPEN HEIFERS
11:45 AM BULLS
12:00 NOON FRESH COWS & SPRINGERS

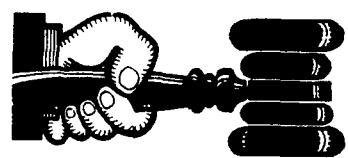
Herd Of 40 Head Sell From Upstate!!
Calving Throughout The Year ---

Several Reg. Bulls Sell With Top Pedigrees

Notice Oct. 29th Annual Show and Sale
Our Judge This Year Is Mr. Ray Seidel
All Consigners Please Have Your Cattle
In On Tuesday 10-28 -- As Early As Possible
Thank You!!

NOTE TO CONSIGNORS!
Please send all information along with your cattle Tues. Fresh Date, Breeding Dates, Milk Weights, with your trucker.

Sale Managed By
New Holland Sales Stables, Inc.
Barn 717-354-4341 Fax 355-0706
David Kolb, Mgr. 61L



AUCTIONEER'S DIRECTORY

Call 717-626-2191 to list your auction service.

Alfred's Auctions Inc.

Alfred J. Finocchiaro-auctioneer
PO Box 861, Hightstown, NJ 08520
Ph: 609-448-SOLD (7653)
Fax: 609-448-0951
alsauction@aol.com

www.alfredsauctions.net



370 Hillcrest Dr
Ephrata, PA 17522
(717) 733-3511

Real Estate • Farm Equipment
• Antiques • Household Goods
It doesn't cost to use our Auction Service...It Pays.
CALL TODAY!!

KLINE, KREIDER & GOOD

AUCTIONEERS

COMPLETE PROFESSIONAL AUCTION SERVICE
REAL ESTATE - FARMS & RESIDENTIAL
LIQUIDATIONS - ANTIQUES -
FARM MACHINERY - LIVESTOCK

RANDAL V. KLINE
AUCTIONEER-REALTOR
717-733-1006
AU #499

ROY E. GOOD, JR.
AUCTIONEER
(717) 445-4309
AU #2116

www.klinekreidergood.com

HFA HORNING FARM AGENCY, INC.

REALTORS • AUCTIONEERS • APPRAISERS
Alvin & Elton Horning • Merle Eberly AU-2417-L
C Ivan Stoltzhus 3920-L
Morgantown, PA (610) 286-5183
>> Courteous Real Estate Services
>> Professional Auctioneers
>> State Certified Appraisers
>> Specializing in Farms and Land

PUBLIC AUCTION

88th ALLEGANY-STEUBEN
HOLSTEIN CLUB SALE

to be held at the Club Barn Canisteo, NY along
St Rt. 36, 5 miles S of Canisteo on St. Rt. 36
only 20 miles North of Pa/NY State Line

FRI. EVE.

OCT. 24, 2003

Starting 7:30 PM
FANCY YOUNG COWS

BRED HEIFERS
CALVES BORN TO SHOW-
BREEDING AGE BULLS

THE OLDEST CONTINUOUS CLUB SALE
IN THE NATION

70 HEAD OF REGISTERED HOLSTEINS SELL
Half those selling are fresh cows milking over 100
lbs. And the majority of the younger animals are
bred heifers due in the next 60 days.

Sires include: Stardust, Storm, Encore, Sky
Frame, Hi Metro, Lee, Mandel, Rubens, Emerson
Red Marker, Linjet, Farmer, Delaware, Leduc,
Eddie, Formation, Highlight, Eclipse, Lantz and
others

Outstanding Pedigrees!!!

Three head sell that are potential 4th gen. Ex 1
Up to 5 gens. VG or Ex, with over 40,000M!
Cows scored up to VG-88 sell!!!

Proven show winners and
show-potential possibilities sell!

TERMS: Cash or Good Check evening of sale.
Nothing removed until settled for.

Health Charts - Preg Checked
Vacc. for Shipping Fever

For Catalogues:
Martin Demun (607) 525-6217
Jerry Smith, CO Chair (607)356-3467
Sale Phone (607)698-4648

Lunch available - Sale held inside

Conducted By
Fralley Auction Co.
1515 Kepner Hill Road,
Muncy, PA 17756
PA Lic. #RY 71L (570) 546-6907

2-DAY AUCTION

UTILITY TRUCKS & EQUIPMENT

ON BEHALF OF:



AUCTION LOCATION:

1450 NEW YORK AVE, WILMINGTON, DE 19801 (800) 550-8810

INSPECTION:

WEDNESDAY, THURSDAY & FRIDAY, OCTOBER 22, 23 & 24, 2003 FROM 9:00 AM TO 5:00 PM AND SATURDAY, OCTOBER 25, 2003 FROM 8:00 AM TO 9:45 AM

FRIDAY, OCTOBER 24, 2003 @ 10:00 AM

Utility Line Equipment

SATURDAY, OCTOBER 25, 2003 @ 10:00 AM

Passenger & Light Duty Vehicles



TO BE SOLD ON FRIDAY: VERSALIFT TEL29 BUCKET ON A 1992 GMC 3500; ALTECA442 42 FT BUCKET ON A 1993 GMC TOPKICK, 1979 CONDOR 150S 155-FT BUCKET ON A FWD 6X6 CARRIER, (4) POSI PLUS 800-40 BUCKET TRUCK ON 2000 GMC TOPKICK, (4) TELSTA T40C BUCKET TRUCK ON 1989 FORD F700, HI RANGER 5FB-40-PBI 40 FT BUCKET ON A 1999 GMC TOPKICK, ASPLUNDH LB3 50 FT MATERIAL HANDLING BUCKET ON A 1988 CHEV C70; VERSALIFT SHV-36-P136 FT BUCKET ON A 1995 CHEV C70, ASPLUNDH LR42 42 FT BUCKET ON A 1991 GMC TOPKICK, VERSALIFT VANTEL 29N BUCKET TRUCK ON A 2000 FORD E350, HI RANGER 5FA48PBI BUCKET TRUCK ON A 1991 FORD F800, (2) ASPLUNDH LR42 BUCKET TRUCK ON A 1993 GMC TOPKICK, (2) HITACHI NH09A-1NH30A BUCKET TRUCK ON A 2002 ISUZU NPR, OK CHAMPION S660 ROUTER ON A 1990 GMC 7000, OK CHAMPION 128LL REEL LOADER ON A 1992 FORD LN9000, 1992 IHC 4800 4x4 CREW CAB SERVICE BODY, 1978 MACK U686 TANDEM AXLE TRUCK TRACTOR, VOLVO L70 RUBBER TIRE LOADER, IR DR365 365CFM AIR COMPRESSOR, TOYOTA 423FG20 4000LB FORKLIFT PENG RO20 REEL TRAILER 1996 CHEV C3500 SERVICE BODY TRUCK, 1991 FORD F350 4x4 SERVICE BODY TRUCK TO BE SOLD ON SATURDAY: 13-FORD EXPLORERS & RANGERS, 5 GMC SONOMAS (VAR YEARS)

VISIT OUR WEBSITE FOR
DAILY UPDATES!

www.nationwideauction.com

FOR AUCTION OR CONSIGNMENT INFORMATION, CONTACT:

MARTY PIELA @ (302) 573-5005 OR TOLL-FREE: (800) 550-8810



TERMS OF SALE: A DEPOSIT OF 25% IN CASH CERTIFIED OR CASHIER'S CHECK IS REQUIRED OF EACH SUCCESSFUL BIDDER UPON AWARD OF BID. COMPANY CHECKS WILL BE ACCEPTED ONLY IF ACCOMPANIED BY A BANK LETTER OF GUARANTEE WHICH CLEARLY AND UNCONDITIONALLY GUARANTEES PAYMENT TO NATIONWIDE AUCTION SYSTEMS UPON PRESENTATION. BALANCE ON ALL PURCHASES MUST BE PAID BY 5:00 PM ON MONDAY, OCTOBER 27, 2003. NO PURCHASES SHALL BE REMOVED UNTIL PAID IN FULL. NOTE: COMPLETE TERMS OF SALE WILL BE DISTRIBUTED AT AUCTION SITE. A 10% BUYER'S PREMIUM WILL BE CHARGED TO EACH LOT AND A \$50.00 PROCESSING FEE FOR ALL UN-PALLETIZED ITEMS - M-LOTS \$10.00 PROCESSING FEE. IMPORTANT NOTE: No ConEdison employee or ConEdison employee family member may purchase property previously owned by ConEdison as per CI 320 6 DE Lic #024060