

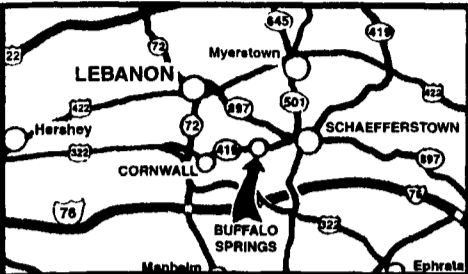
# www.kbford.com

Your Internet Connection

SPECIALIZING IN NEW & USED SUPER DUTY PICKUPS

## KELLER BROS.

(Buffalo Springs) Lebanon, PA  
**717-949-2000 or 1-800-363-2767**  
**LEBANON COUNTY'S HEAVY DUTY TRUCK HQTRS.**



**FAMILY OWNED AND OPERATED FOR OVER 80 YEARS**

Over 100 Clean Pre-Owned Vehicles In Stock At All Times!!

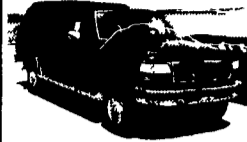
**99 DODGE DAKOTA CLUB CAB 4x4**  
 SLT, V6, AT, A/C, PW, PL, AM/FM/Cass,  
**Special \$14,275**



**2000 FORD F250 SUPERCAB XLT 4x4**  
 V8, AT, A/C, PW, PL, 28,000 Miles  
**Only \$23,995**



**1997 FORD F250 REG. CAB 4x4 XLT**  
 7.3 Turbo Diesel, 5 Spd., A/C, PW, PL, Clean - One Owner  
**\$18,995**



**2001 FORD F150 SUPER CAB XLT SHORT BED**  
 4x4, V8, AT, A/C, PW, PL, 22K Miles  
**\$23,995**



**2001 FORD ESCAPE XLS 4x4**  
 6 Cyl., AT, A/C, PW, PL, MoonRoof  
**\$15,570**



**1996 CHATEAU TRAVEL TRAILER MILLENNIUM EDITION**  
 30ft., Sleeps 6, A/C, Gas & Elect., Stove & Refrig., Very Nice Condition  
**\$9,985**



**1998 FORD E350 CLUB WAGON**  
 15-Pass., 5.5 V-8, AT, Dual A/C, PW, PL,  
**\$13,995**



**JUST TRADED 2003 FORD MACH I MUSTANG**  
 4.6 V8, 5-Spd, A/C, PW, PL, Leather, Limited Edition  
**\$25,500**



**2001 FORD SPORT TRAC 4x4**  
 4.0L AT, A/C, PW, PL, Alloy Wheels, Sharp  
**Only \$20,773**



**1997 FORD F150 SUPER CAB XLT**  
 2WD, 4.6 V8, AT, A/C, PW, PL, 1-Owner  
**\$12,995**



**2003 FORD EXPLORER XLT, 4X4**  
 V6, AT, A/C, PW, PL, 3rd Seat  
**Only \$25,375**



**2002 FORD F350 XLT CREW CAB DUALY**  
 7.3 Powerstroke Diesel, 6-Spd., A/C, PW, PL, only 9,800 miles  
**\$34,975**



**JUST TRADED 1996 FORD F250 SUPER CAB 4X4 XLT**  
 7.3 Turbo Diesel, 5-Spd, PW, PL, C, T, A/C



**2001 FORD F350 XL Dump Truck**  
 5.4 V8, 5-Spd., AM/FM/Stereo Only 7,000 Miles. Ready to Work  
**\$25,900**



**2000 JEEP GRAND CHEROKEE LTD**  
 V8, AT, A/C, PW, PL, Leather,  
**\$17,595**



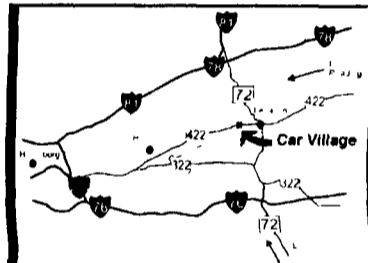
Nicest Trucks In the East • Nicest Trucks In the East • Nicest Trucks In the East • Nicest Trucks In the East • Nicest Trucks In the East • Nicest Trucks In the East

www.useddieseltruck.com

2300 W. CUMBERLAND ST. (Rt. 422)  
 LEBANON, PA 17042  
 (Across From Lebanon Valley Mall)

# CAR VILLAGE

1-800-650-1420  
 717-274-2000



**EQUIPMENT HAULER**  
 2001 CHEVY 3500 SUPER CAB  
 Dual Rear Wheels, Strong 8.1 Litre Vortec, 6 Spd., A/C, Only 13,000 Miles



**\$15,900**  
 96 FORD F250 SUPER CAB 4x4  
 Local 1 Owner Trade, Powerstroke Turbo Diesel, Auto, A/C, Tow Pkg.



**CUMMINS DIESEL**  
 2001 DODGE 2500 4x4  
 Very Nice Heavy Duty 3/4 Ton, Only 25,900 Miles, 24 Valve Cummins Diesel, AT, A/C, 3.55 Gear Means Great Fuel Mileage



**2 WHEEL DRIVE**  
 2001 CHEVY 2500 HD  
 6.0 Litre V8, Auto, A/C, Cloth Seat, Vinyl Floor, Local 1 Owner Trade, Only 45,000 Miles



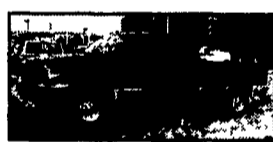
**THE NICEST**  
 97 FORD F250 SUPER CAB 4x4  
 Only 61,000 Miles, Powerstroke Turbo Diesel, Auto, A/C, Loaded XLT, Alloy Wheels, Comfortable 40/20/40 Seat



**91 GMC K1500 SUPER CAB 4x4**  
 82,000 Original Miles, Very Nice Truck to Drive, 350 V8, Auto, A/C And All Other Options, Alloy Wheels  
**\$8,800**



**4 DOOR MECHANICS TRUCK**  
 2000 FORD F350 4x4  
 Only 48,000 Miles, Powerstroke Turbo Diesel, Auto, Loaded XLT, Royal Truck Body, Open Top Lid



**6 SP Powerstroke**  
 2000 FORD F250 SUPER CAB 4X4  
 Very nice TK. Remaining new Tk. warranty only 48,000 miles Loaded XLT, Alloy Wheels



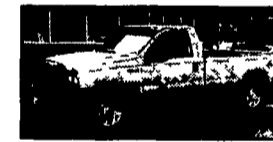
**6 SPD. DURAMAX**  
 2001 GMC K2500 CREW CAB 4X4  
 Hard To Find, Good To Own, Only 58,000 Miles, Remain New Tk Warranty, 6 Spd. Manual, Alloy Wheels, Tow Pkg.



**6 SPD. DUALITY**  
 2000 FORD F350 SUPER CAB 4x4  
 Great Tow Machine, Power Stroke Turbo Diesel, 6 Spd., Loaded, XLT, Aluminum Wheels, Tow Pkg. Only 49,000 Miles



**5SP CUMMINS**  
 98 DODGE 2500 4x4 PICKUP  
 Heavy Duty 3/4 Ton Impressive Cummins Turbo Diesel, A/C, Tow Pkg  
**\$17,900**



**6 SP Powerstroke 2001 FORD F250 4x4**  
 Only 18,000 Miles, Like New Remaining Ford Warranty, Powerstroke Turbo Diesel 6SP AC, Heavy 8800 GVW



**DON'T BUY NEW LOOK AT THIS**  
 2003 DODGE 2500  
 HEAVY DUTY CREW CAB  
 Only 1,000 Miles, 24 Valve Cummins Turbo Diesel, Auto., Loaded Laramie SLT. A Beauty and Only \$34,900



**350 SUPER CAB 4x4**  
 2000 FORD  
 Heavy Duty, Single Wheel, 9900 GVW, Powerstroke Turbo Diesel, Auto, A/C, Alloy Wheels, Tow Pkg., Great Looking Tk.



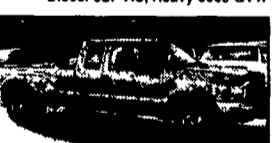
**BIG GAS**  
 97 CHEVY 2500 SUPER CAB 4X4  
 454 V8 Auto, AC, Heavy 3/4 Ton 8600, GVW Runs + Drives great  
**\$8,900**



**6 SPD. CREW CAB 4X4**  
 99 FORD F350 XLT LARIAT  
 Beautiful Tk., Powerstroke Turbo Diesel, 6 Spd., A/C, Leather Seats, All Pwr. Equipment, Alum. Wheels, 63,000 Actual Miles



**2 WHEEL DRIVE**  
 2000 FORD F350 SUPER CAB DUALY  
 Giant Tow Machine, Only 57,000 Miles, Powerstroke Turbo Diesel, 6 Spd., XLT Pkg., Nice Clean Truck  
**Only \$22,900**



**26,000 GVW**  
 2000 FORD F650 FLATBED  
 Under CDL License Only 2 700 Miles  
 3126 Cat Diesel, 6 Spd Trans 14ft Stahl Body

## FLATBEDS, WORK & DUMP TRUCKS



**14 FOOT FLAT DUMP**  
 99 FORD 550 SUPER DUTY  
 Powerstroke Turbo Dump, Auto, A/C Heavy 19,000 GVW



**4x4 DUMP**  
 2002 FORD F350  
 Nice One, Only 34,000 Miles, Powerstroke Turbo Diesel, Auto, A/C, 3 Yd Dump Body with Fold Down Sides



**DIESEL CARGO VAN**  
 2001 FORD F350 SUPER CARGO VAN  
 Only 40,000 Miles, Remainer New Ford Warranty, Extended Length, Powerstroke Turbo Diesel, Auto, AC, Limited Slip Axle Means Great Traction, Tow Pkg.



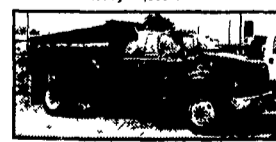
**4x4 FLATBED DUMP**  
 97 FORD F350  
 Brand New 12ft Body, Powerstroke Turbo Diesel, 5 Spd., A/C, Runs Well



**26,000 GVW**  
 2000 FORD F650 FLATBED  
 Under CDL License Only 2 700 Miles  
 3126 Cat Diesel, 6 Spd Trans 14ft Stahl Body



**2000 FORD 550 SUPER DUTY 4x4 CREW CAB**  
 Powerstroke Turbo Diesel, 6 Sp., A/C Vinyl Seats & Floor  
**\$25,900**



**26,000 GVW**  
 2000 FORD 550 SUPER CAB.  
 Under CDL Only 22,000 Miles, Cat Diesel, Allison, Auto A/C, Heil Dump Body, 22 5 Tires



**4x4 UTILITY 1982 CHEVY.**  
 Runs great, 80,000 original miles  
 350 V8, Auto, 9 ft Reading Box, Ladder Racks,  
**\$7,900**



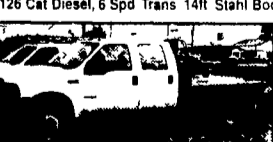
**FARMERS FRIENDS**  
 88 DODGE  
 Only 60,000 Miles, 360 V8 Auto, 3yd Dump, Runs Well,  
**\$7,900**



**11 FOOT DUMP BODY**  
 99 FORD 450 SUPER DUTY  
 24,000 Actual Miles, Powerstroke Turbo Diesel, 6 Spd., A/C, Tow Pkg., PTO Holst, A Very Nice Truck



**2000 FORD 550 SUPER DUTY 4x4 CREW CAB**  
 Powerstroke Turbo Diesel, 6 Sp., A/C Vinyl Seats & Floor  
**\$25,900**



**15,000 GVW**  
 99 FORD 450 DUMP TRUCK  
 Only 44,000 Miles, 6 SP Manual Trans, Powerstroke, Turbo, Diesel, AC, Tow Pkg. Very strong  
**\$23,900**



**SUPER CAB DUMP**  
 2000 FORD F350  
 A Very Desirable Truck, Clean, Only 85,000 Miles, V10, Auto, A/C, 9 Ft. Body Insp. & Services  
**\$22,900**



**TOW MACHINE**  
 2000 FORD 550 CREW CAB,  
 4x4 Eby Aluminum Body, gooseneck + class 4 Hitch, Powerstroke Turbo, Diesel, auto, AC, Loaded XLT, Check it out.



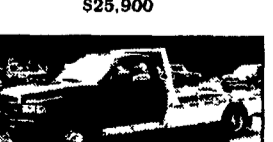
**\$13,900**  
 350 FLATBED SINGLE WHEEL 2000 FORD 350  
 5.4 Triton V8 Auto., A/C, Vinyl Floor & Seat, 8 1/2 Ft. Aluminum Bed, Fold Down Sides, Handy Truck Around The Farm



**15,000 GVW**  
 99 FORD 450 DUMP TRUCK  
 Only 44,000 Miles, 6 SP Manual Trans, Powerstroke, Turbo, Diesel, AC, Tow Pkg. Very strong  
**\$23,900**



**GOOSENECK HAULER**  
 2001 DODGE 3500 4x4 FLATBED  
 High Output Cummins, 6 Spd, A/C, 10/11 Aluminum Bed, Gooseneck + Class 3 Hitches



**2001 DODGE 3500 4x4 FLATBED**  
 High Output Cummins, 6 Spd, A/C, 10/11 Aluminum Bed, Gooseneck + Class 3 Hitches

Nicest Trucks In the East • Nicest Trucks In the East • Nicest Trucks In the East • Nicest Trucks In the East • Nicest Trucks In the East • Nicest Trucks In the East