

350 TRUCKS / TRAILERS

7511 Allentown Blvd.
Harrisburg, PA 17112

**AFFORDABLE
CARS AND TRUCKS, INC.**

717-652-1925
FAX 717-652-4888
Hours: Mon. & Tues. 9-9
Wed. thru Sat. 9-6

**75 TRUCKS
IN STOCK**

"You Gotta Believe!!"

New Exit #72A, Rt. 81 N; Rt. 22 East of Harrisburg; 3 Miles North of Hershey Park

97 FORD F250 XLT 4x4

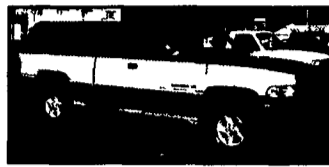
EXT LONGBOX H.D., 8800 GVW, 351 V8, AT, AC, PW, PDL, Tilt, cruise + More Very sharp truck new tires 140K



\$10,995

96 DODGE 1500 4x4 LARAMIE SLT

SHORTBOX, EXT CAB, 360 V8, AT, AC, PW, PDL, Leer Cap Super Nice, Low Mile Truck 70,000 Mi Flawless!



\$10,995



97 CHEV 1500 4x4 SILVERADO

3rd Door SHORTBOX EXT CAB, VORTEC 350 AT AC PW PDL, Tilt, + more Leer Cap! Only 82K, Mint Condition

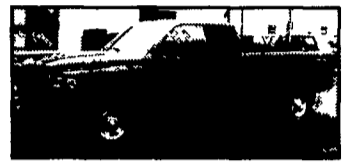
\$11,995



93 FORD F150 4x4 XLT SHORTBED,

300 6 Cylinder, 5 Spd., Fully Loaded, Extra Nice Truck, 125K

\$4,995



00 DODGE RAM 2500 4X4 SLT LARAMIE QUAD DOOR,

Longbed, Cummins Turbo DSL, AT, AC, PW, PDL, Leather Interior, This Truck Is All Black & Like New, 102K

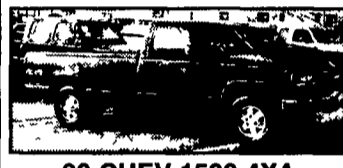
\$19,995



96 DODGE DUALLY 3500 4x4 SLT LARAMIE

Quad Longbed 1 Ton Cummins Turbo Diesel 5 Spd 1 Owner Flawless Truck New Clutch Trans Turbo Power Chip Big Exhaust + PA Insp Over 400 HP This Boy Will Run! 200K But Looks Like 50K

\$14,500



90 CHEV 1500 4X4 SILVERADO PU

350 V8, AT, AC, PW, Longbox, New PA Insp, Very Clean Truck 1-Owner, 150K, No Rust!

\$4,995



92 GMC YUKON 4x4 SIERRA PACKAGE

AT, 350 V8, AC, PW, PDL, Tilt & More, 100,000 Miles, All Black

\$6,500



95 DODGE RAM 2500 4X4 SLT LARAMIE H.D.

8600 GVW, 360 V8, AT, AC, + All Power, 100,000 Mi

\$8,995



94-1/2 FORD F250 XLT 4X4

7 3 Powerstroke, 5 Speed, Only 80K, Absolutely Like New!

\$11,995



95 FORD F250 XLT 4x4 H D 351 V8 Gas, AT, AC, PW, PDL, Tilt, Cruise

1-Owner, 100,000 MI

\$7,995



99 DODGE RAM 4x4 2500 SLT, Laramie, Quad Door, Long Box

Cummins Turbo 5 Spd., Fully Loaded, Flawless, Texas 1-Owner This Is A Most Desired Truck On The Used Market Only 100,000 Mi Hurry

\$19,995



97 FORD F150 XLT SHORTBOX

V8 AT, AC, PW, PDL, Tilt, Cruise, Really Good Looking Truck All Black & She's A Beauty 100,000 Mi

Only \$7,495



86 CHEV. 2500 4x4 SCOTTSDALE H.D.

8600 GVW Rare 350 V8 & Factory Stick Mint Condition, Truly Flawless Body Ready To Work 100,000 Mi

\$5,995



98 DODGE DAKOTA SLT 4X4 SPORT

Ext Cab, V6, AT, AC, PW, PDL, Tilt, Cruise & More 100,000 Mi Dk Green

\$7,995



96 FORD F250 XLT, 4X4 EXT., LONGBOX

7 3 Powerstroke DSL, AT, AC, PW, PDL, Tilt, Cruise All DK Green, 120K, Real Sharp Truck, Needs Nothing

\$13,995



97 FORD F250 XLT 4x4 EXT. Longbed, 7 3 Powerstroke, AT, AC, PW, PDL, Tilt, & More, 2 Tone Blue, 100,000 Mi.

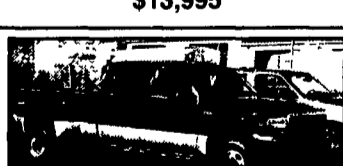
\$15,995



95 FORD E-150 CARGO VAN XLT

AT, V8, AC, PW, PDL, Tilt, Cruise & More, 100,000 Mi

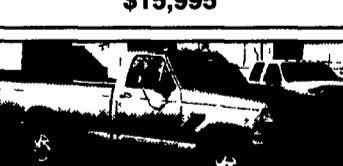
\$6,995



99 FORD F350 4X4 XLT SUPER DUTY CREW DUALLY

7 3 Powerstroke Dsl, Rare 6 Spd., AC, PW, PDL, Tilt, Cruise & Much More Only 120K, Black Truck

\$21,995



96 FORD F350 XL 4x4

1-Ton, 9000 GVW, H.D., 7 3 Powerstroke dsl, 5-speed, AC, cloth seat, Real Clean Truck, No Disappointments All blue, 140K

\$12,995



88 CHEVY C-30 4x4 CREW LONGBOX SCOTTSDALE,

2 Tone Red/Black 350 V8, 5 Spd No AC 100,000 Mi Just Traded And This Is A Nice Truck! I Have The Only One On The East Coast

\$6,995



96 FORD F250 XL 4x4 EXT LONGBOX, 7 3 Powerstroke DSL, 5 Sp, AC & More, 180K All Well Cared For & Maintained Miles, New Rubber

\$11,995



97 FORD F250 XLT 4X4 Ext Longbox, 7 3 Powerstroke Dsl, 5-Speed, AC, PW, PDL, Tilt, Cruise, Beautiful 2 Tone Green Paint, Truck Is Sharp, 150K

\$14,995

Disclaimer Mileage listed for your convenience only, it is approximate, not to be relied on as exact Sorry for any inconvenience

Lebanon Valley
877-866-1610
Located along Rt. 422 between Lebanon & Myerstown, PA
Authorized Dealer for Belmont, Mid Atlantic, CAM Superline & Zook Trailers

TRAILER SALES
699 West Lincoln Ave., Myerstown, PA 17067

14' To 20' 10,000 to 12,000 lb GVWR Equipment Haulers, Belmont & Zook Call for Special Pricing

14' to 24' Deckovers & Goosenecks, 3,000 to 16,000 lb GVWR Belmont & Zook

Custom Built Trailers Available
• Trailer Parts, Tires, Wheels & Accessories •
• Hitch Installation & Repair •
We also Specialize in Landscapers, Car Haulers & Dumps of all sizes.

LEED
Truck Center
402 S. Chiquito Rd. • Manheim, PA
(717) 698-1200 • Fax (717) 698-1300

Consignments Welcome
Financing Available
CALL: Ray Leed
If We Don't Have It - We Can Find It!

OCTOBER SPECIALS

<p>89 FORD F-250, V8 A/T P/S, 6 500 GVW 8 Supreme Slide-In Reefer with Temp Con Refrig Unit Only \$4,000</p>	<p>1984 FORD F600, 8 2 Liter DD 5 & 2 Spd P/S Hyd Brakes Non CDL 23 100 GVW 16 Platform Dump Insp Clean Call For Details</p>	<p>88 Chevrolet Grumman 14' alum reefer step van V8 GM gas A/T P/S, dual wheel 10 000 GVW new insp very clean Only \$3,500</p>
<p>1993 CHEVROLET 3500 HD, 454 GM Gas, 4 Spd O/D P/S P/B Dual Wheel 15 000 GVW 13 Eby Livestock Alum Body, Insp, Very Clean Call For Details</p>	<p>1986 PETERBILT CONV., Cummins Turbo Diesel, 9 Spd, P/S A/B A/C Air Ride Susp, 50,000 GVW, 22 Stahl Platform Body Insp Clean Only \$8,900</p>	<p>1994 FORD F700, 5 9 Liter Diesel A/T, P/S A/B Non CDL 24 500 GVW 10 Platform with Gooseneck Hitch, 223,000 Miles Insp Very Clean Only \$6,000</p>
<p>93 Ford E-250 cargo van 6 cyl, A/T P/S P/B ladder rack insp, clean Reduced to: \$3,500</p>	<p>2000 CHEVROLET S-10 PICKUP, 4 Cyl, A/T, P/S, AC, Cloth Int Only 47,000 Miles Insp, Clean Only \$7,500</p>	<p>1985 FORD LN7000, 3208 Cat Diesel, 5 Spd, P/S Hyd Brakes, 30 000 GVW, 16 C&C Frame Rust Great Farm Truck CHEAP!</p>
<p>1990-93 NPR ISUZU, 4 Cyl Turbo Diesel, A/T, 14' & 16' Morgan Van Bodies 11 050 GVW, New Insp, Very Clean Your Choice \$4,500</p>	<p>80 IHC 2275, single axle, 6-71 D D 10 spd, P/S, A/B, 144" WB, Great site, yard or farm tractor Only \$2,900</p>	<p>1 - 20' Morgan Ref. Body 1 - 18' Hackney Ref. Body 2 - 12' Morgan Ref. Body Must Go - Call For Details</p>
<p>88 Isuzu NPR, 3 9 liter diesel, 5 spd, 11 1/2' alum body, only 141,500 miles, insp, clean Only \$2,300</p>	<p>Storage Trailers, 45 & 48' Van Trailers, Swing & Roll-up Doors Starting at \$900 & Up</p>	<p>85 GMC TOPKICK, 3208 Cat Diesel, 5 & 2 Spd, P/S, A/B, 30,000 GVW, 22' Platform Body With Clearfield Conveyor Only \$3,500</p>
<p>94 Ford E350, 15 pass bus, 460 V8, A/T, P/S, Dual A/C, Dual wheels, Plus wheel chair lift, insp, clean Only \$3,600</p>	<p>88 Chevrolet Grumman 14' alum reefer step van, V8 GM gas, A/T, P/S, dual wheel, 10,000 GVW, new insp, very clean Only \$3,500</p>	<p>Pro Tough Tandem Axle, Galv, Trailer, Fenders, Plank H W floor & ramps, 6 ton, all most new Only \$3,000</p>
<p>95 Ford L7000, 5 9 liter turbo diesel, A/T, P/S, hyd brakes, A/C, 28,000 GVW, 18'x9'11" Morgan van body, new insp, very clean \$9,500</p>	<p>85 Mack Midliner MS250, 6 cyl turbo, 5 spd, P/S, A/B, 20' x 91" Morgan van body, insp, clean Only \$3,500</p>	<p>89 IHC S1954, DT466 210HP, 6 spd, P/S, A/B, Newway spring/air tag axle, GVW 46,000#, 21' platform body, new insp Only \$4,900</p>
<p>1996 IHC, 4700, T444E Turbo Diesel, 5 Spd, PS, Hyd Brakes, Cruise, Non CDL, 25,500 GVW, 16' Duralite Van Very Clean Reduced to \$9,900</p>	<p>1986 UD NISSAN CPC, 6 Cyl Turbo Diesel, 6 Spd, P/S, A/B, 30,000 GVW, 20' C&C, Great Work Truck Only \$2,900</p>	<p>88 Ford F350 7 3 diesel, 12' platform Call for details</p>