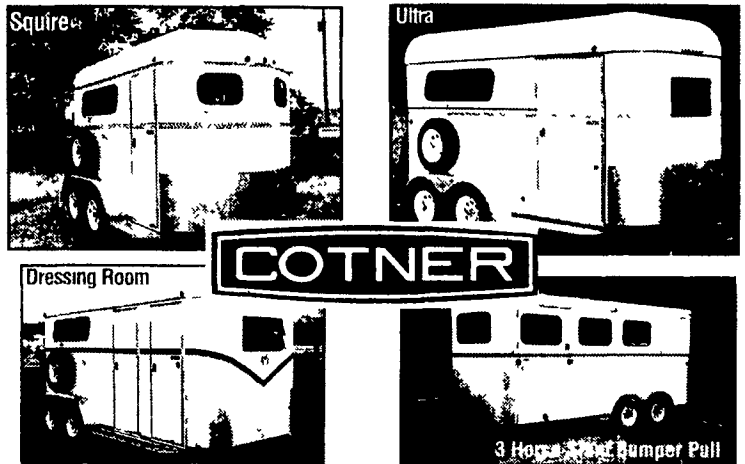


350

TRUCKS / TRAILERS

New From LanChester Trailer • Quality horse trailers by:



COTNER



We service all makes and models of trailers. Aluminum Welding and Fabrication. We stock a full line of trailer parts & accessories

LanChester Trailer Supply, LLC

220 East Gordon Rd, Gordonville PA 17033 717-768-0663 6:15 AM - 5:00 PM M-F, 8:00 AM - 1 PM Sat, www.lanchestertrailer.com

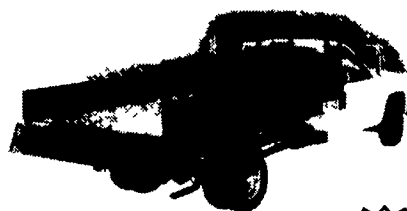
F.M.I.

Your Full Line For **Scott**

FEEDMOBILE, INC.

717-626-2680 Lititz, PA

TRUCK BODIES & HOISTS



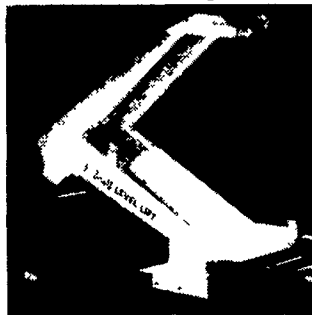
- Used Truck Flat Bed, 24' w/Winch Straps . . . \$700
- Truck Lift Axle. . . \$1,000

PULL TARP AVAILABLE



STAKE BODIES

- Steel Painted Racks
- Aluminum Racks
- Polyboard Racks



DROP HINGE HOISTS

- Class B - 9' to 12'
- Class D - 12' to 16'
- Class E - 12' to 16'
- Class F - 12' to 18'

1995 INTERNATIONAL, 444E w/18' VAN BOX, 5 SPEED, 25,500 GVW \$7,500

Woodcrest Motors

SPECIALIZING IN TRUCKS & VANS
1200 North Reading Rd., (Rt. 272) Stevens, (Lancaster Co.) PA 17578
717-336-3130



99 CHEVY EXPRESS 1500 LS
V8, AT, A/C, Most Options, 8-Pass, Blue, 75,000 Miles
\$11,500



99 DODGE 2500 RAM VAN
8 Pass, V8, AT, Dual A/C, Most Options, Black, 60,000 Miles
\$11,995



02 CHEV VENTURE LS
Extended V6, AT, A/C, Most Options, 7 Pass, Silver, 59,000 Miles



00 OLDS SILHOUETTE EXTENDED 4 DOOR
AT, V6, Dual A/C, Most Options, DK Blue, 48,000 Miles
SPECIAL \$10,700



98 FORD CLUB WAGON CHATEAU
7 Pass, V8, AT, Dual A/C, PW, PL, C T, Black & Silver, 93,000 Miles
\$9,900



00 CHEV ASTRO LT EXTENDED AWD
8-Pass, Leather, V6, AT, Dual A/C, Most Options, White, 60,000 Miles
\$12,500



99 GMC SAFARI SLE, AWD
V6, AT, Dual A/C, 8-Pass, Most Options, Pewter, 30,000 Miles
\$11,500



99 PONTIAC MONTANA
4 Dr, V6, AT, A/C, Most Options, Blue, 65,000 Miles
\$10,900



00 FORD WINDSTAR SE
V6, AT, Dual A/C, 4 Dr, Most Options, Black, 63,000 Miles
\$10,995

TRUCK TIRES

- Used Truck Tires
- Authorized Cooper Tire Dealer
- Good Supply of Retreads In Stock, Or We Can Custom Retread Your Own Tires To Meet Your Hauling Needs
- Eliminate the Middleman and Buy Direct from our Retread Shop and Save \$\$!
- Our Family Business Has Been Retreading Tires for Over 35 Years

We Know How To Do It Right!

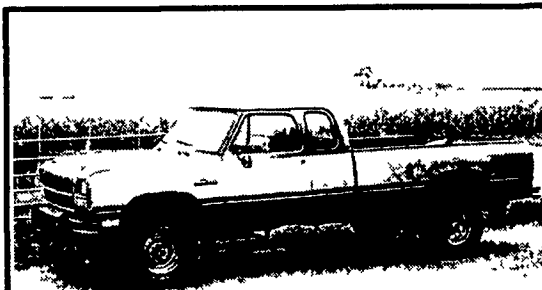


WEAVER'S TIRE SERVICE

Ephrata, PA
Drive On. 717/733-8775

www.useddieseltruck.com

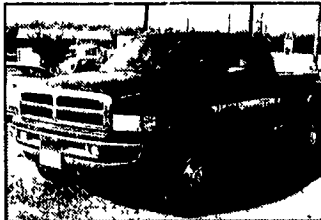
CHECK IT OUT



93 Dodge 3/4 Ton Truck Rebuilt
5 Spd, Cummins Tach, Boost, EGT Gauges, Lots of New Parts, Well Worth It, Nice Shape!
Lancaster County
\$8,400 717/629-6146

Diesel Owners!

Get HP & Fuel Mileage



We Have Performance Chips For The Following:

- Dodge Cummins 40-120 HP + 175 Ft. lbs. More Torque
- Chevy Duramax 70-210 more HP up to over 400 lbs. of Torque
- Ford Powerstroke 60 - 80 - 120 add more HP up to 200 lbs. of Torque
- VW TD 35 more HP add up to 35 + 45 lbs. of Torque

Free Installation 2003 Performance Chips & Exhaust are here & in stock

We carry complete line 4" exhaust systems for..... \$550
*Torque Converters *Valve Bodies *Exhaust Brakes *Gauges *K&N Air Filters



You Get More Horsepower & Torque
We Carry The Best Stuff For Your Truck
Propane For Diesel - Nitrus For Diesel
(717) 249-2255 Call Now!!! Ask for Shawn
LIBERATOR PERFORMANCE



1970 Spring Road, Carlisle, PA 17013
Sales, Service & Inspection

Four Way Auto Sales
VANS, VANS, VANS • ALL MAKES, All Models.



03 Ford E-150 Club Wagon XLT
8 Passenger, 5.4 V8, Dual A/C & Heat, Privacy Glass, PW, PL, Tilt, Cruise, Cassette, CD, Keyless, Tow Package, Silver, 21,000 Mi., #4697



02 Chevy G1500 Express LS, 15 Passenger, 5.7 V6 Eng., Dual A/C & Heat, Privacy Glass, PW, PL, Tilt, Cruise, CD, Keyless, Tow Package Charcoal, 19,000 Mi. #4706



03 Chevrolet Astro AWD,
8 Pass, 4.3 V6, Dual A/C & Heat, Privacy Glass, PW, PL, Tilt, Cruise, CD, Keyless, Tan, 9,400 Mi. #4739



02 Chevy G1500 Express LT, 7 Passenger, 5.7 V8, Dual A/C & Heat, Privacy Glass, PW, PL, Tilt, Cruise, CD, Keyless, Tone Package, Quad Captains, Entertainment Center, Blue, 32,000 Mi. #4718



03 Chevy G3500 Extended Express LS,
15 Passenger, 6.0 V8, Dual A/C & Heat, Privacy Glass, PW, PL, Tilt, Cruise, Pewter, 29,700 Mi. #4728

Additional Inventory

7 Passenger

03 Ford E150 Club Wagon Chateau,
5.4 V8, Blue/Silver, 31,000 mi. #4729

03 Ford E-150 Club Wagon Chateau,
5.4 V8, Tan/Gray, 17,000 Mi., #4686

03 Ford E-150 Club Wagon Chateau,
5.4 V8, Tan/Gray, 21,000 Mi., #4687

01 Chevy G1500 Express LT,
5.7 V8, Green, 36,000 Mi. #4645

8 Passenger

03 Ford E150 Club Wagon XLT, 5.4 V8, Green, 2000 Mi., #4735

03 Ford E150 Club Wagon XLT,
Blue, 12,000 Mi., #4742

02 Chevy G1500 Express LS, 5.7 V8, Charcoal, 14,000 Mi., #4707

02 Chevy G1500 Express LS, 5.7 V8, Pewter, 13,000 Mi., #4700

12 Passenger

03 Ford E350 Clubwagon XLT, 5.4L V8, White, 8,300 Mi., #4738

01 Ford E350 Clubwagon XLT, 6.8L V10, Chestnut, 50,900 Mi., #4751

03 Chevrolet G2500 Express LS, 6.0 V8, Charcoal, 23,800 Mi., #4748

03 Ford E350 Club Wagon XLT, 5.4 V8, White, 7,000 Mi., #4737

03 Ford E350 Club Wagon XLT,
5.4 V8, Silver, 25,000 Mi. #4722

03 Ford E-350 Club Wagon XLT,
5.4 V8, Green, 24,000 Mi #4723

03 Ford E-350 Club Wagon XLT,
5.4 V8, Silver, 22,000 Mi., #4689

15 Passenger

03 Chevrolet G3500 Extended Express LS, 6.0 V8, White, 1,300 Mi., #4747

00 Dodge B3500 Maxi Ram Wagon Base,
5.9L V8, Green, 43,000 Mi., #4750

03 Ford E-350 Super Club Wagon XLT,
5.4 V8, Silver, 24,000 mi., #4730

00 Ford E350 Super Club Wagon XL,
5.4 V8, Green, 8,000 mi., #4732

03 Ford E-350 Super Club Wagon XLT,
6.8 V10, White, 29,000 Mi., #4702

Cargo Vans

03 Chev G2500 Cargo, White,
11,000 Mi

01 Ford E350 Econoline Hi Top,
White, 17,000 Mi

Financing Starting at 6.75%
Rt. 23, New Holland, PA
717-264-3199
Toll Free 1-877-333-3399 VANS (5267)
• Commercial customers welcome
• Warranties available



00 FORD E-350 CLUB WAGON CHATEAU,
7 Passenger, 7.3 Power Stroke Diesel, Dual A/C & Heat, Privacy Glass, PW, PL, Tilt, Cruise, Cassette, Tow Package, Quad Captains, Red/Silver, 80,000 Mi. #4682



01 FORD E150 CLUB WAGON TRAVELLER
7 Passenger, 5.4 V8, Dual A/C & Heat, Privacy Glass, PW, PL, Tilt, Cruise, CD, Tow Package, Quad Captains, Leather, Entertainment Sys., Green/Gray, 7800 Mi., #4711



01 Ford E-350 Super Club Wagon XLT,
15 Passenger, 5.4 V8, Dual A/C & Heat, Privacy Glass, PW, PL, Tilt, Cruise, Cassette, Tan, 34,700 Mi. #4474



00 FORD E350 CLUB WAGON XLT
12 Passenger, 5.4V8, Dual A/C & Heat, Privacy Glass, PW, PL, Tilt, Cruise, Cassette, PSeat, Keyless, Tow Package, Green, 47,000 Mi. #4725



02 Ford E350 Super Clubwagon XLT
15 Pass, 6.8L V10, Dual A/C & Heat, Privacy Glass, PW, PL, P-Seat, Tilt, Cruise, Cass CD, Keyless, Tow Pkg, Black, 41,700 Mi., #4740