

West Penn Twp. PUBLIC AUCTION

PRIVATE ESTATE (Home & 90 Acres/2 Parcels) REAL ESTATE, ANTIQUES, TOOLS & WOODWORKING EQUIP.

9:30 A.M.

SAT., OCT. 25, 2003

Location: 23 Mi. N. of Allentown, 6 Mi. E of Rt. 309 & Village of Snyders/5 Mi W of Ashfield - off Rt. 895 in the Village of Andreas (turn onto Andreas Rd. to Mt Rd. to property) West Penn Twp., Sch County, PA.

Real Estate: Very private estate featuring approx. 90 Acres of open/wooded level to gently rolling land, with more than 5/10 mi frontage along Mt. Rd. Situated thereon is a 2-1/2 story 80+ yr old frame farm house featuring 7 rms./4 bedrms - 2 bath, attic, basement, fireplace & MANY EXTRAS - full utilities & conveniences. Detached is a single car garage & storage shed. NOTE: This real estate will be offered in 2 parcels (parcel 1 - House & 6 Acres; parcel 2 - remaining 94 Acres) and or as a unit. GREAT PC. OF PROPERTY - PRIVATE/GREAT HUNTING OR SUBDIVISION POSSIBILITIES

Terms: (R.E.) 10% down, balance in 60 days Other terms day of auction
Inspection: (R.E.) Sun., Oct. 19, 2003 - 1 to 2 30 PM. or Call Auct for Apt

Sale by:

ESTATE OF MARY A. OWENS

Exec.'s: Larry S. Owens, Judith Nansteel

Doug/Tim Houser Aucts. AU-000446L
610-799-2396 or 570-386-2191
houserauctions@aol.com
www.houserauctioneers.com



Public Auction Register

Closing Date Monday 5:00 P.M. of each week's publication

MON NOV 3 - 4PM Public Auction, real estate. 2604 Old Phila Pike, (Rt 340) Bird-in-Hand 2 1/2



www.zieglerauction.com

SCHEDULE HIGHLIGHTS

Auction Every Wednesday at 3:00 pm. Doors open at 1:00 pm

- Tues. Oct. 14 - Real Estate 3-bedroom 2-story in Butler, PA @ 2 00 pm
- Wed. Oct. 15 - Duck Stamps & Ltd Edition Prints (Federal, State, Nations) at 6 00 pm
- Sat. Oct. 18 - Tractor & Related Equipment, Antiques, Longaberger Baskets & Household @ 904 Colonial Rd., Dauphin Co., Harrisburg, PA
- Tues. Oct. 21 - Nursery Stock, Landscaping Equipment & Vehicles at 8.30 am @ 3605 County Line Rd., North Wales, PA 19454 (selling for PennDOT due to a road construction project)
- Wed. Oct. 22 - Glass Baskets & Westmoreland Glassware at 6 00 pm
- Mon. Oct. 27 - Restaurant Equipment at 10:00 am @ 1549 Bobali Dr., Harrisburg, PA 17104 (selling for PA Dept. of Labor & Industry Bureau of Blindness & Visual Services)
- Tues. Oct. 28 - 2 auctions in Cambria County (selling for Penn Dot due to a road construction project) Coal Distribution Business & Woodworking Business -
- Wed. Oct. 29 - Die Cast Cars & Trucks & Promo Cars at 6:00 pm
- Fri. Oct. 31 - Farm Equipment at 10:00 am @ 1190 Jacksonville Rd., Bellefonte, Centre Co., PA 16823 (selling for Penn DOT due to a road construction project)
- Sat. Nov. 1 - Longaberger Baskets at 9:00 am (NOTE - this auction is full Accepting consignments for our winter basket auction)
- Sat. Dec. 6 - Catalogued Antiques & Collectibles Auction

We provide Auction Services for Real Estate, Business Liquidation, Commercial, Antiques, Firearms, & Collections

CALL OR VISIT ZIEGLERAUCTION.COM

FOR ADDITIONAL INFO

NOW ACCEPTING CONSIGNMENTS FOR OUR DECEMBER 6TH ANTIQUE AUCTION

ZIEGLER AUCTION COMPANY LTD. LIC. #AH081-L
1550 SAND HILL RD., HERSHEY, PA 17036
717.533.4267 OR PA TOLL FREE 1 877 833.4200



"AUCTION - the ultimate marketplace" www.zieglerauction.com

- story brick home. John S Stoltzfus, AU-001728-L 610-593-6680.
- TUES NOV 4 - Fed Cattle Sales. Carlisle Livestock Market, Inc, 548 Alexander Spring Rd., Carlisle Mkt ph 717-249-4511, Buyer's ph 717-249-0396
- TUES. NOV 4 - 12PM Real estate, 40 acres at 1010 Bangor Rd., Plainfield Twp., Northampton Co., PA farm & forest zoning, by Zettlemoyer Auct Co 610-395-8084
- WED NOV 5 - Lumber & bldg supplies by Wolgemuth Auct Dennis Wolgemuth #2357, 717-656-2947
- WED NOV 5 - 9AM Cumberland Valley produce auction fall machinery consignment sale at Koser Road, 4 mi N of Shippensburg, by Mike Quarrick AU003701L 717-530-5007
- WED NOV 5 - 6 30PM Toys & Collectibles at 100 W Jackson St., New Holland, PA by Diffenbach Auct AH000145L 717-355-7253
- THURS NOV 6 - 2PM 12 1/2 ac Farmette, 2 1/2 sty stone dwl., barn at 163 Davis Rd., Coatesville, PA, W Caln Twp., by Randal Kline #499 717-627-0511
- THURS NOV 6 - 4PM Real estate, 2 5 sty 4 bdrm house/barn 25 acres at 69 S Line Rd., Stevens, PA by John J Rutt II Auct, AU3383 L 717 354 3190
- FRI NOV 7 - 4PM Country split level on 1/2 acre lot in Earl Twp., New Holland on Sunset Rd., by Randal V Kline #499, 717-733-1006
- SAT NOV 8 - 8 30AM Tools, fishing items, 1974 Ford Thunderbird, misc at 3320 Spondin Dr., Longstown, PA by Rentzel's Auct Serv AU761-L, 717-764-6412

PUBLIC AUCTION



Sat., October 18, 2003 9:00 A.M.

(Selling personal property & real estate formerly belonging to Shem A. Aigler.)

Located along Route 522 in the Borough of Beavertown, PA, Snyder Co. Sale consisting of real estate, collectibles, household & misc. items.

REAL ESTATE (Tract 1)

Located in Beavertown, PA, Snyder Co., along Rt. 522 (406 W. Market St.) A large 1 acre town lot on which is situated a 2-story home The 1st floor consists of a large eat-in kitchen, dining room, living room, small den with 2 built in corner cupboards, and a laundry area with toilet, the second floor contains 4 bedrooms, a full bathroom & closet space This home boasts a large wooden open stairway with a spacious front foyer and hallway The home has a full attic, a small cemented basement Large open back porch and is heated by oil hot water The home has town water/sewer. Also on the property is a 40'x80' two room cold storage building, with its own electric service And a 2 bay carport This property at one time was 3 town sized lots, now is combined on one deed (185' road frontage)

To see this valuable piece of Real Estate by appointment, call (570) 658-7424 or (570) 658-4931.

TRACT 2

Located in the Borough of Beavertown, PA (P Thomas Subdivision). Turn off Route 522 onto Kern St., travel approx 2 blocks, turn right onto Old Orchard Drive Property being sold is an open lot, approx 1/4 acre in a housing development This property has all underground utilities. To see this building lot and restrictions call (570) 658-7104. Any tests may be conducted on either tract of real estate prior to sale date at prospective buyers expense. Real Estate to be offered at 12:00 noon.

COLLECTIBLES, HOUSEHOLD & MISC. ITEMS

Large floor safe "Barnes Safe & Lock Co. 1940's oak table w/chairs (V & Eagle Design). Depression era dining room table w/chairs & buffet, 3 pc Depression era bedroom suite, China closet; Small drum table, Franklin treadle sewing machine, Paveway treadle sewing machine, 2 Germany Coo-Coo clocks, Granite top table, Acme adjustable dress form, GE tabletop tube radio, Wooden ironing board, Tea pot collection Bell collection, Wooden wheelbarrow (missing sides), Assorted glassware including Fenton basket, Clear cake stands, Bowls, etc., Plank bottom chairs, Crock bowls, Sad irons: Wooden biscuit box, Tin lunch bucket, Hydro Cub Cadet 17/20 Riding Mower; 36" Barn fan w/motor, and many many items of interest

TERMS: Cash or PA check. Real estate 10% down day of auction, other terms made known day of auction I.D. required for bidder no AUCTIONEER'S NOTE: If you're looking for a nice home in town, but the space of a country lot, don't miss this nice piece of Real Estate. Come spend the day at an auction!

P.O.A.'s: Wayne Aigler, Twila Bohr

Attorney: Tom Clark, Middleburg, PA

Auctioneers:

Robert L. Leitzel - AU-002062-L (717)694-3287 • Richfield, PA
Tim L. Kline - AU-002998-L (570)837-0280 • Middleburg, PA
Owners & Auctioneers Not Responsible For Accidents Food Stand Provided

PUBLIC AUCTION

CARPENTRY & MECHANICAL TOOLS, ANTIQUES, HOUSEHOLD GOODS SAT., OCT. 18, 2003 at 8:00 A.M.

Located: 1930 Harrisburg Ave., Mt. Joy, PA 8.00 A.M. Starting auction w/household goods Two auctioneers some of the time.

Cedar chest, sofa, uph. chairs, marble top end tables, coffee table, 14 plank bottom chairs unfinished, chest of drawers, kneehole desk, glass display case, Meilank safe, 2 sm display cases, scales, metal cabinets, drafting table, Hoover sweeper, canning jars, wooden bucket, many more articles too numerous to mention

CARPENTRY TOOLS: Atlas grinder & hone, Rockwell 1" belt sander, Radial arm DeWalt 12" saw w/long table, 3 phase 18" Delto planer, Delto 14" band saw, oscillating spindle sander, bench grinders, Rockwell miter box, Paslode air gun & nails, Skill elec. circular saws, elec. hand sanders, elec. drills & stand, vises, wood & metal miter saws, tap & die sets, planes, McCulloch chain saw, antique tools, Russell Jennings auger bits, transit set, Atlas cope gas rock drill, Emmert cabinet marker vise, Hargrave wood clamps, C clamp, pipe clamps, hammers, chisels, saws, hatchets, screw drivers, tee squares, other squares, 6'-6" levels, Universal construction scaffolding & planks, work benches, 3 lumber carts, trusses, step ladders, walnut, chestnut & other lumber. Many, many hand tools

"1960 Rambler" needs work.

MECHANICAL TOOLS: Sockets, box wrenches, open end wrenches, pipe wrenches, Test Rite tool chest, many mechanical tools, 2 sets reamers, Livingstone hi pressure washer, elec. garage opener, hyd. jacks, all kinds of electrical hardware, elec. heaters, elec. ventilators, building hardware, plumbing hardware, metal 27 drawer cabinet, hemp ropes, block & tackles, elec. cords, 4 wheelbarrows, gas engine w/water pump w/1/2" discharge, Howard rotavator, lawn seeders, lawn weed meter.

These tools were used in the former Rheems Lumber Millwork. Lunch available. Not responsible for accidents. All announcements day of auction take precedence over printed matter.

Auction For: **AARON G. & PHYLLIS LONGENECKER**

Miller's Auction Service AU-617L
Raymond Miller 653-8762
Jim Hershey 689-0235

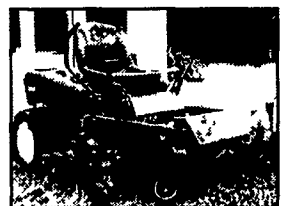
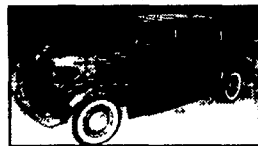
Public Auction

1937 Pontiac, Lawn & Garden, Wood Working Tools, Antiques Sat. Oct. 18, 2003 8:30 AM 1240 Freysville Rd., York, PA



Directions: From I-83 exit # 18 (Mt Rose Ave) take Rt. 124 East 4 miles to Freysville Rd. & turn left, follow 1/2 mile to auction on left, watch for signs

1937 Pontiac Deluxe, Turtleback, 4dr, 6cyl., 3sp. on floor, maroon, partial restored



1950's Monark men's & ladies' bicycles in nice org condition

Lawn & Garden: JD 332 16hp 3cyl Diesel, garden tractor, hydrostatic P/S, 554 hrs, full cab, 44" snow blower & 48" deck, integral hitch, Toro Time Cutter 17hp 52" zero turn riding mower (3 years old), JD 54" hyd angle snow blade, JD #80 dump cart, JD 48" thatcher, E-Z Rake lawn vac w/ 4hp motor, Toro sp lawn mower, Billy Goat lawn vac., 5 1/2 hp Stihl pressure washer, Stihl BG65 leaf blower, Stihl FS72 weed eater, Rubbermaid dumpcart, Agri-Fab 160 broadcast seeder, lawn roller, back pack sprayer, 20' alum & 28' fiberglass ext ladders, wheelbarrow, long handled tools, log chains, gas powered Wacker Stomper

Woodworking Equip.: Bridgewood 12" planer, Craftsman 6" jointer, table saw, drill press, jigsaw, 12" bandsaw, belt/disc sander, Belsaw saw sharpener, Hitachi 8 1/2" slide compound saw, Rockwell wood lathe 12" x48". Skill scroll saw, all of the above equip have nice factory HD stands, (2) shop vacs

Tools: Rigid pipe wrenches 6"-36", cresset adj Wrenches 4"-24", Craftsman box wrench sets 3/8"- 1 5/8", t handle allen wrenches, c clamps, bench vises, soft tip hammers, wood chisel sets, 1/2 impact sockets, hand tools of all description, Stanley & Bailey wood planes, draw Knives, several nice workbenches, tap & die sets, MAC deepwell socket set, several Craftsman socket sets, machinist tools: square sets, indicators, parallel clamps, wood & metal drill bits, taps, endmills, (7) bar clamps, (5) pipe clamps, wood clamps, Craftsman 10 drawer tool box, metal cabinet w/ drawers, Bosch 5/8 rotary hammer drill, sawsall, angle grinder, sanders, router & table, 1" belt sander, bench grinder, drills, air sanders, 1/2 impact wrench, 1 1/4 ton floor jack, Marbles hatchet, wood block planes, mower blade sharpener, antique grindstone, router & forstner bit sets, comealongs & more

Furniture: oak drysink w/ zinc lining (nice), Singer-treadle sewing machine, blanket chest, oak dresser, oak stand, misc. old chairs & rockers, 1960's metal & vinyl sofa, octagon coffee table, Panasonic 46" projection screen TV, wheel chair, sewing machine, small chest freezer

Antiques: New Haven clock, Arlinton German accordion, Deloro guitar & mandolin, clarinet, auto harp, bronze bookends, stereo viewer, coverlet, Quality Service milk box, Fishels bread box, Wrightsville hardware coffee grinder, barn lantern, wash boiler, tire ashtray, old buttons, (2) sets Black art S&P's, crocks & jugs, old market baskets, quilting stand, old Christmas dec., skillet, metal tubs, washboards & more

Seller: Bud & Virginia Hursh **Terms:** cash or good check

ALL ANNOUNCEMENTS DAY OF AUCTION TAKE PRECEDENCE OVER PRINTED MATERIAL

Rentzel's Auction Service Emigsville, Pa

Blaine N. Rentzel AU 761-L Dave Conley AU 3269-L
www.rentzelauctionservice.com 717-764-6412

