

# Information On Black Folk Artists

Can you provide me with any information on a black folk artist known as "The Bride Of Christ" as well as Joseph Yoakum who was another black folk artist? Also, where can I find examples of their work?

Marjorie Clark Northbrook, IL

The black folk artist to whom you refer is none other than Sister Gertrude Morgan, who was an itinerant street preacher, musician, and gospel singer in Montgomery and Mobile, Ala., as well as in New Orleans.

She was born in Lafayette, Ala. in 1900 and died in 1980. She claimed to be the "bride of the Father and the Christ," and wore only white clothing and surrounded herself with white decor.

She also ran the Everlasting Gospel Mission from her New Orleans home, in which she delivered sermons while seated in a white chair behind a white table.

Sister Gertrude told folks that God talked to her and moved her hand to paint religious pictures to be used as

gospel messages. Her paintings, which she combined with written text or "teachings," are especially prized by folk art collectors. Sister Gertrude Morgan's paintings measuring more than 12x20-inches are rare, and would be particularly valuable.

Joseph Elmer Yoakum's works were inspired by what he called "the force of a dream."

Yoakum said, "The Lord gave me instructions. My drawings are a spiritual unfoldment."

His drawings were not only a spiritual unfoldment, they were also the touchstone for a long, restless, and adventurous life.

Though he was Black, Yoakum's life began on a Navajo reservation. He married twice, and lived in locations all over America including Missouri, Florida, California and Indiana. Ultimately he settled in Chicago, and at the age of 76, he began to draw at the urging of a compelling dream. Yoakum's work is focused on a remarkable vision of the landscape with fantastic forms to

encompass the range and sweep of his imagination. Working with ballpoint pen, and colored pencils, his pictures of great mountains expand and grow, opening up and out, punctured by pockets of trees, forests and rivulets, whereas his later pictures of great seas and oceans he must have traveled on, are wonderfully and magically alive, imbued in a radiant and luminous light.

Another of Yoakum's colorful works is a huge ranch type house amid lush gardens, grasses, flowers, trees, and pretty paths inscribed by Yoakum in black ink at the top titled "The House of Great Joy. Palms Springs, California by Joseph E. Yoakum."

His original art work is on exhibition through November 8, and can be seen in all its colorful glory, at Joseph Yoakum — The Magic and the Wonder of the World exhibit in conjunction with The Intuit Show of Folk and Outsider Art on view at The Carl Hammer Gallery (presented in their second floor gallery space), 740 North Wells Street, Chicago, IL 60610.

You may write for information, or call (312) 266-8512. Or to buy or sell folk or outsider art, e-mail: hammergal@aol.com or visit: www.hammergallery.com.

I must say, visiting Hammer's gallery is an unforgettable experience that'll enrich your life inside, outside, and upside toward the heavens leaving you spellbound.

For more information regarding the spiritual and moving works by Sister Gertrude Morgan and Joseph Yoakum as well as countless works by other outsider artists, check out the book, "Contemporary American Folk Art — A Collector's Guide" by Chuck and Jan Rosenak available in a 320-page edition with color photos of the artworks, and black and white photos of the artists with their biographies, for \$29.95 plus \$4 postage from Abbeville Press, 488 Madison Avenue, New York, NY 10022. Or phone 1(800)-343-4499 toll free to order.

For questions, write Anita Gold, P.O. Box 597401, Chicago, IL 60659. Enclose a self-addressed stamped envelope with a copy of this column and the name of the paper in which it appears for a reply.

## TOYS TOYS TOYS TOYS TOYS TOYS PUBLIC BANKRUPTCY AUCTION SAT., OCT. 18, 2003 @ 9:00 AM MURRY AUCTION EMPORIUM 23 North Water Street / Lititz, PA 17543 CHRISTMAS SHOP EARLY!!

Smarty Pants, Inc. of Shillington, PA - entire contents of retail store with all types of learning toys and supplies, new display racks, shelving, Royal cash register.

**Brief listing:** Games; Large variety of puzzles; Paint and create; Phonics; Matching games; Dart ball; Star Wars items; Tie dye kits; Greeting cards; 7 in one super game sets; Learning maps; Stickers; Disney blocks; Play boards and flower books; ABC blocks; Magnetic learning calendars; Small erector sets; Breyer horses; Various popular Brio educational toys; Hundreds of elementary educational toys not listed.

Please note that all items are without reserve.

Auction By Order Of **Robert H. Holber Trustee**

Bankruptcy Case #03-22668

*Elmer Murry Auctions, Inc.*

-AU-648-L-  
Professional Auctioneer, Appraiser and Advisor  
Our Services Are Not a Sideline  
(717) 626-2636 Fax (717) 627-6757

## OUTSTANDING 2-DAY PUBLIC AUCTION FRI., OCTOBER 17, 2003 AT 2:00 PM ANTIQUES, HOUSEHOLD GOODS, (3) GUNS, & TOOLS AND SAT., OCTOBER 18, 2003 AT 9:00 AM EARLY 1800'S DUTCH CUPBOARD W/RATTAIL HARDWARE, BLUE DEC. STONWARE, (8) QUILTS 1840 JOS. KLAR-READING COVERLET, TEXTILES, HANGING KEROSENE LIGHTS, TRAINS, FURNITURE & PRIMITIVES

**LOCATION:** Between Blandon & Fleetwood along Pleasant Hill Rd. in the Village of Walnuttown, Berks Co., PA. Turn off Rt. 222 (between Rt. 73 & Rt. 662) at Martin's Produce Stand onto Pleasant Hill Rd. for 2 mi. to auction on left).

**SELLING FRIDAY:** C.I. kettle & tripod; Lanterns; Old signs; Maytag wringer washer (nice); Beam scale; Early child's C.I. stove; Small painted chest; Small mahogany chest w/1-drawer & handles; Wood pulleys; Fish rods & supplies; Penn Apron thermometer; Adv. boxes & tins; Wdn. porch rockers; Binoculars; Stepladders; Sprinkle cans; Peach baskets; Hardware; Utility cabinets; Power & hand/garden tools; Cigar & cheese boxes; Assorted dishes & glassware; Kitchen items misc. household items. **Guns:** Kassnar 20 ga. 3" dbl. barrel; Antique 32 & 38 cal. hand guns.

### SELLING SATURDAY:

**FURNITURE:** Large dovetailed red paint 5'x2' deep blanket chest, Early 2-door 12 panel Dutch cupboard (4-drawers at top - 2-drawers at bottom). Low dovetailed dry sink; (Dovetailed wood chests; (2) Dovetailed blanket chests, (2) Round walnut Victorian tables; Empire chest of drawers; Round oak pedestal table; Gate-leg & chestnut drop-leaf tables; Washstands; Drop-leaf table w/drawer w/turned legs; Mortised benches; Early high jelly cupboard w/white knobs; Dovetailed cradle; Barroom chairs; Open wooden hutch, Clawfoot mahogany rocker w/dragon arms; Child's rocker & others; Set of 6 decorated arrowback chairs w/birds; Early mini blanket chest w/strap hinges & 2-drawers; Round-back child's & doll high chairs; Camelback & flat trunks; Tapered leg gate-leg table; Early tin star punch pie safe; Doughboxes table; Martha Washington sewing cabinet; Elec. sew. machine; Sm. chest freezer; Plus other misc furniture.

**ANTIQUES & PRIMITIVES:** Cowden & Wilcox - Harrisburg 2 gal. jug w/lg blue flower; Norton & Co. - Mass. dated w/blue 1859 jug; Assort. crocks; 6-pc. blue stoneware chamber set; Kerosene lights; Bennington daisy sponge cup & saucer, Spatterware; (6) Earthenware molds; Stoneware - redware - yellowware milk pitchers; Green & gold edge glass; Cow creamers; Cut glass; Noritake; Germany; 4 pc. Marquet chamber set; Bennington peacock pitcher; Gettysburg paperweight & tray; Roller skate & hat candy containers; (2) Hanging kerosene lights w/prisms; Brass bird cage; Topton & Fleetwood calendars; Brass hanging scales; Early German birth certificates; Many old pictures w/frames; Assort. jewelry (antique & costume); Tall Victorian parlor lamp; Eclipse 31-day oak wall clock; Gingerbread clock; Old German Bibles; Blue & white agate coffeepot; Pocket & hunting knives; Tin cups & coffee pots; Min. store scale; Covered bridge painted milk can; Alum milk pails; Old wooden Christmas fence & yard accessories; Lionel HO trains; 5 pc. Hafner tin wind-up train set; Tru Scale train accessories; Wdn barn & house; Train window; Sewing & craft items; Early fabric; Tablecloths & linens; Doilies; WWII uniforms & accessories; Comfords; Old pin cushions; Tapestry. Old Nativity set, Green mason jars; (8) Patchwork & embroidered quilts; Old crib quilt; Quilt tops; Holiday decorations; plus many early items too numerous to mention

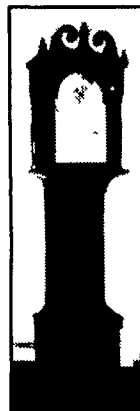
**AUCTIONEER NOTE:** This is an outstanding estate auction with many interesting early items. No auction for 3-generations. Plan to attend

**TERMS:** Cash or PA check day of auction.

**SALE FOR: MABEL ROTHERMEL ESTATE**

Chris Spang, Attorney

KENNETH P. LEIBY, AUCTIONEER  
1126 Moselem Spring Rd., Hamburg, PA  
PA L#: AU00541-L - 610-562-3929



**DIR:** Off I-83 exit # 24 (Emigsville), at northbound exit ramp go straight across onto Board Rd. Follow 1 mile to auction on right.

**12:00 Noon Real Estate 12:00 Noon**

3 Bedroom Brick Rancher w/ 2 car attached garage, Living room, eat-in-kitchen, 3 bedrooms w/ large closets, 1 bath, enclosed rear porch with brick fireplace, hardwood floors throughout, cemented basement w/ large brick fireplace, on 1/2 acre lot in Manchester Twp., Central schools, public water, onsite septic, gas hot water heat & more.

**Terms:** 10% down balance due in 45 days. Call 717-764-6412 or 577-1884 to see property.

**Antique Furniture:** Grandfathers clock w/ D. Rose, Reading on hand painted face w/ second hand, (4) door oak ice box, massive Walnut poster bed w/ (4) 8' posts, Victorian bed, Victorian marble top dresser w/ mirror & washstand, Victorian drop-leaf table, (2) dovetailed blanket chest w/ tills, 1 with stain decoration, Mahogany: serpentine front secretary desk, music cabinet, armchair, Columbia Grafonla record player, oak stands, mortised benches, old wooden cupboard base, old wooden cupboard, wicker rocker/chair & stand, cane seat chairs & rockers, chest of drawers w/ mirror, Mason & Hamlin pump organ, dec. 3 legged chair, oak potty chairs, Martha Washington sewing cab., softwood rope bed, ball-n-claw piano stool, oak press back youth rocker, Modern Cherry drop leaf gate leg table & cherry hutch, Brunswick pool table & more

**Appliances:** Whirlpool washer & Gas dryer approx. 4 years old, Sentry safe, (2) upright freezers, refrigerator  
**Primitives:** very nice decorated wooden sled, Chas D. Moul min. jug, crocks & jugs, (10) pottery mixing bowls, bow saw, chicken crates, milk cans, adv. tins., lanterns, enamel coffee pot & basins, wooden barrel w/ lid, sleigh bells, Bennington style bowl w/ lid, min. sad iron, flutter & more

**Glassware:** German, Austrian, Nippon, Bavarian, & other pcs. of old china inc. tea pots, bowls, plates, vases etc., pink, yellow & green Depression: canister, candy dish, plates & more, blue dec. china inc. cake stand & more, Ironstone: teapot, tureen, wash bowl & pitcher, 50+ pcs. English Meakin china, 40+ pcs. Schzumann Arzberg German china, Japanese nut set, Halls Autumn Leaf: Teaport, water pitcher, hunting bowls & more, misc. press & pattern glass.

**Antiques:** elec. lamp w/ painted shade, old cement planters, jardinières, early draftsman set, military uniform, U.S. Reg. bugle, Bakelite handle manicure set, old smoke pipe, old material & linens, old tapestries, Victorian frames & prints, cast iron frog & dog nut cracker, cast & tin banks, magic lantern, old map

**Antique Miniatures & Dolls:** awesome grain painted dry sink, Victorian doll house, wooden: bank barn, school house, & church, wooden fence, Novelty cast cook stove, painted dresser w/ mirror, Victorian doll bed, old jointed doll w/ porcelain head, composition doll, Raggedy Ann doll.

**Old Toys:** wooden toy clown, jointed wooden toy elephant, Oliver 77 w/ mtd. Picker, pull type combine, baler & manure spreader, Oliver 1/32 mower, plow, corn planter, rake, disk & more. Oliver Iron Age parts books, baseball glove, 1920's wooden block sets w/ boxes, board games: Hop-along Cassidy, Peter Coddels, Elsie, Across America, Gasoline alley & more, wooden puzzles, set of (40) Uncle Wiggly books, Allstate New Haven HO train set N.I.B., toy wash board & wringer, (4) 1960's VW bus lunch boxes, (12) 1960's VW plastic cars, 1930's cast metal car, view masters & slides

**Misc.:** lighters & pocket Knives some w/ adv., old Christmas decorations, first day issue stamps, postcards, costume jewelry, lots of old books, Years of Playboys, misc. household items & more

**Lawn & Garden:** JD 214 hydrostatic tractor, w/ 48" mower, JD 38" snow blower attach., JD STX38 riding mower w/ 38" deck & bagger, Toro 4cl sp push mower, Husqvarna H40 chain saw, hyd. log splitter w/ gas engine, Troybilt pony tiller, chipper shredder w/ elec. motor, dump cart, Kemp 20" rototiller & snow blower w/ Tecumseh engine, Pulan 14" chainsaw, elec. chain saws

**Tools:** Alum. ladder, small elec. power tools, nice assortment of hand tools, long handled tools, elec. impact wrench, large bench vise, toolboxes, & more

**Guns:** Remington model 722 222 Rem. w/scope, Military rifles: 3040 Krag Springfield model 1896, Danzio model 1906, German Mouser & Danzio (non firing), (3) bayonets, Ranger model 36 22, Noble model 50 16 gauge pump, Marlin model 81-DC 22, Crescent Arms 410 shotgun, J. Stevens 12 gauge

**Bows:** (2) Ben Pearson compound bows: 300 Shadow & # 47610 (new), (2) 15x60 spotting scope, old & new binoculars, hunting knives

Car: 1985 Ford Thunderbird, V-6, tan, auto air, 179,000 miles

**Auction Conducted by:**



Rentzel's Auction Service

Blaine N. Rentzel AU 761-L

Dave Conley AU 3269-L

Emigsville, Pa 717-764-6412

www.rentzelauctionservice.com



Terms: Cash or Good Check

Seller: Wilson Myers

Attorney: John Shorb

ALL ANNUCEMENTS DAY OF AUCTION

TAKE PRECEDENCE OVER PRINTED MATERIAL