

**1997 F350 XLT**

Crew cab, power stroke diesel, 4x4, PW, PDL, AC, cruise control, tilt wheel, towing package, bedliner, rollup tarp, 115,000 miles, ex cond \$17,900  
**570-943-2499 • 570-943-2137**  
 Orwigsburg, PA

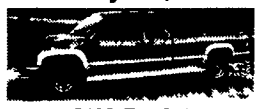
**Meadowbrook Auto Sales**  
 875 Abbottstown Pike, Hanover, PA  
**717-632-9600 717-633-5789**



**1994 Ford F-250 Ext. Cab**  
 7.3 Turbo Diesel, Automatic, PS, PB, Air Cond, Cruise Control, Tilt Wheel, PW, PDL, 126,000 Miles  
**Only \$9,900**



**1999 Dodge Ram 2500 Laramie SLT 4x4**  
 V-8, A.T., PS, PB, Air Cond, PW, PDL, Tilt Wheel, Cruise Control, 47,000 Miles  
**Only \$15,900**



**1995 GMC Ext Cab 4x4**  
 350 V-8, A.T., PS, PB, Air Cond, Cruise Control, Tilt Wheel, PW, PDL, 132,000 Miles  
**Only \$9,900**



**1995 Dodge Ram 2500 4x4**  
 Cummins Diesel, A.T., PS, PB, AC, Cruise Control, Tilt Wheel, 94,000 Miles  
**Only \$13,900**



**1998 Dodge Ram Ext. Cab 2500 4x4**  
 Cummins Diesel A.T., PS, PB, Air Cond, Tilt Wheel, Cruise Control, 163,000 Miles  
**Only \$14,900**



**1997 Ford E-350 Cargo Van**  
 5.4 V-8, Automatic, Air Cond, PS, PB, 94,000 Miles  
**Only \$8,900**



**1999 Ford F-350 Ext. Cab 4x4 Dually**  
 7.3 Powerstroke Diesel, A.T., PS, PB, Air Cond, Tilt Wheel, Cruise Control, PW, PDL, Cloth Interior, Super Clean, 161K  
**Only \$18,900**



**1997 Ford F-250 Ext Cab HD**  
 4x4, 7.3 Powerstroke Diesel, A.T., PS, Air Cond, PW, PDL, Tilt Wheel, Cruise Control, One Owner, Nicest 97 You will find, 86,000 Miles  
**Only \$19,900**



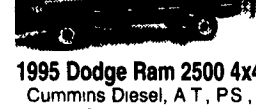
**1999 Dodge Ram 3500 Ext Cab 4x4 Dually**  
 Cummins Diesel, A.T., PS, PB, Air Cond, Cruise Control, Tilt Wheel, PW, PDL, 82,000 Miles, Super Nice Condition  
**Only \$22,900**



**1997 Ford F-350 Crew Cab XLT 4x4**  
 7.3 Powerstroke Diesel, 5 Speed, PS, PB, Air Cond, PW, PDL, Tilt Wheel, Cruise Control, Super Super Sharp, 139,000 Miles  
**Only \$17,900**



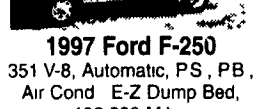
**1998 Chevrolet 12 Ft. Dump Stakebody**  
 350 V-8, Automatic, PS, PB, Air Cond, Tilt Wheel, Cruise Control, Dual Rear Wheels, 25,000 Miles  
**Only \$19,900**



**1995 Dodge Ram 2500 4x4**  
 Cummins Diesel, A.T., PS, PB, Air Cond, Cruise Control, 160K  
**Only \$10,900**



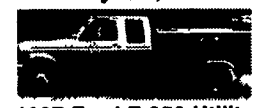
**1986 Ford F-250 Ext Cab**  
 6.9 Diesel, A.T., PS, PB, Air Cond, Tilt Wheel, Cruise Control, PW, PDL, 179K,  
**Only \$5,900**



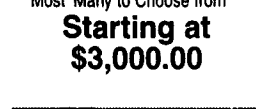
**1997 Ford F-250**  
 351 V-8, Automatic, PS, PB, Air Cond, E-Z Dump Bed, 106,000 Miles  
**Only \$9,500**



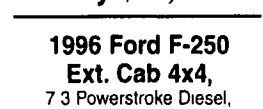
**Stepvans - All Aluminum**, 10 ft to 16 ft Single Rear and Dual Rear Wheels, Aluminum & Manual Trans, 4 Cyl & 8 Cylinder Diesels, 1350 Gas, Service Records for Most Many to Choose from  
**Starting at \$3,000.00**



**1997 Ford F-350 Utility Truck Ext. Cab**  
 7.3 Powerstroke Diesel, A.T., PS, PB, Air Cond, Dual Rear Wheels, 116,000 Miles  
**Only \$14,900**



**2000 Ford F-250 Ext Cab XLT**  
 7.3 Powerstroke Diesel, 6 Speed, PS, PB, A/C, PW, PDL, Tilt Wheel, Cruise Control, 98,000 Miles, Real Nice Condition,  
**Only \$21,900**



**1996 Ford F-250 Ext. Cab 4x4**  
 7.3 Powerstroke Diesel, 5 Spd PS, PB, A/C PW, PDL, Tilt Wheel, Cruise Control, 138,000 Miles, Super Nice condition  
**Only \$15,900**

# Ebys Hold A Lot More Than Their Value

*With Eby's lightweight aluminum construction, you can carry more payload and enjoy the benefits of low maintenance aluminum.*



**Flatbeds**

Lengths to 32'; with a choice of 5 widths  
 Available with removable sides as option.

**Landscape Contractor**

Lengths to 14', available with permanent and hinged sides.



**Landscape**

Lengths to 16'; shown with removable aluminum top & rear vacuum leaf unit. Models shown may feature options not included on standard units.

Available with **HARSH Hoists**

- Rugged, high grade aluminum, 20-25% lighter than steel
- Most durable construction in the industry
- Excellent resale value
- Lighter weight, more payload
- Never needs painting
- Enhances appearance of truck
- User friendly



**The Agri-Transportation Innovators**

ALUMINUM

Visit us at our website: [www.mheby.com](http://www.mheby.com) or call for the name of the dealer nearest to you.

**BLUE BALL, PA (800) 292-4752**

# Eby's Fantastic Fall Clearance Sale

*It's all priced to move!*



Used 2002 Eby 8' Aluminum Flatbed Trailer

**SOLD**

Perfect for landscaper, contractor or mobile welder - **\$2,500.00 takes it!**



**NEW 2002 Eby 9' Aluminum Landscape Construction Truck Body** 96" wide. Hinged fold down side, top and bottom, hinged rear tailgate, **\$5,750.00 cash and carry!**

**NEW EBY ALUMINUM FLATBEDS**



**MUST GO!**

- (1) 9' long x 90" wide
- (1) 10' long x 92" wide
- (1) 8'6" long x 96" wide

**Got To Go!**

**8 1/2, 9 AND 10-FOOT BODIES** include rear light bars and trap doors for GN Hitch  
**\$1,950.00 cash & carry - take your pick**

**USED EBY ALUMINUM LIVESTOCK BODIES** 16' long x 96" wide **\$1,450.00 cash & carry**

Sales • Service • Parts



**The Agri-Transportation Innovators Since 1938**



1194 Main Street (Rt. 23) • Blue Ball, PA 17506 • **800-292-4752**