

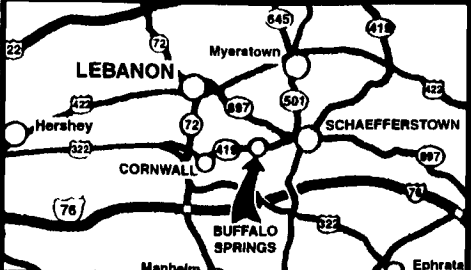
www.kbford.com

Your Internet Connection

SPECIALIZING IN NEW & USED SUPER DUTY PICKUPS

KELLER BROS.

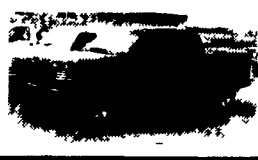
(Buffalo Springs) Lebanon, PA
717-949-2000 or 1-800-363-2767
LEBANON COUNTY'S HEAVY DUTY TRUCK HQTRS.



FAMILY OWNED AND OPERATED FOR OVER 80 YEARS

Over 100 Clean Pre-Owned Vehicles In Stock At All Times!!

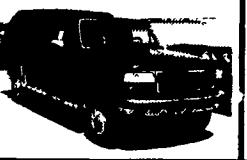
2001 FORD F150 SUPERCREW XLT 4x4
 5.4 V8, AT, A/C, PW, PL, CD, T. Cover, 33,000 Miles
\$24,995



2000 FORD F250 SUPERCAB XLT 4x4
 V8, AT, A/C, PW, PL, 28,000 Miles
Only \$23,995



1997 FORD F250 REG. CAB 4x4 XLT
 7.3 Turbo Diesel, 5 Spd., A/C, PW, PL, Clean - One Owner
\$18,995



2001 FORD F150 SUPER CAB XLT SHORT BED
 4x4, V8, AT, A/C, PW, PL, 22K Miles
\$23,995



2001 FORD ESCAPE XLS 4x4
 6 Cyl., AT, A/C, PW, PL, MoonRoof
\$15,570



1997 FORD F150 SUPER CAB XLT
 2WD, 4.6 V8, AT, A/C, PW, PL, 1-Owner
\$12,995



2000 JEEP GRAND CHEROKEE LTD
 V8, AT, A/C, PW, PL, Leather,
\$17,595



1998 FORD E350 CLUB WAGON
 15-Pass., 5.5 V-8, AT, Dual A/C, PW, PL,
\$13,995



JUST TRADED 2003 FORD MACH I MUSTANG
 4.6 V8, 5-Spd, A/C PW, PL, Leather, Limited Edition
\$25,500



2001 FORD SPORT TRAC 4x4
 4.0L AT, A/C, PW, PL, Alloy Wheels, Sharp
Only \$20,773



2002 FORD E 350 CARGO VAN
 7.3 Diesel, AT, A/C, Bins & Racks Ready To Work
\$22,995



2003 FORD EXPLORER XLT, 4X4
 V6, AT, A/C, PW, PL, 3rd Seat
Only \$25,375



2002 FORD F350 XLT CREW CAB DUALY
 7.3 Powerstroke Diesel, 6-Spd., A/C, PW, PL, only 9,800 miles
\$34,975



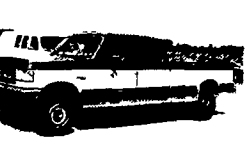
JUST TRADED 1996 FORD F250 SUPER CAB 4X4 XLT
 7.3 Turbo Diesel, 5-Spd, PW, PL, C, T, A/C



2001 FORD F350 XL Dump Truck
 5.4 V8, 5-Spd., AM/FM/Stereo Only 7,000 Miles. Ready to Work
\$25,900



1988 FORD F250 CREW CAB
 4x4, V8, A/C, Runs & Drives Great!
\$6,375

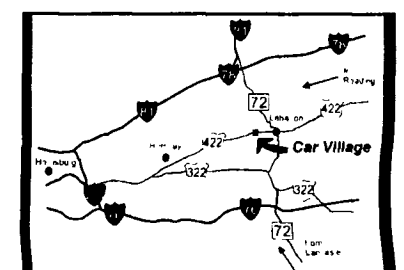


Nicest Trucks In the East • Nicest Trucks In the East • Nicest Trucks In the East • Nicest Trucks In the East • Nicest Trucks In the East • Nicest Trucks In the East

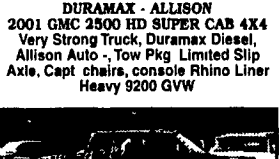
www.useddieseltruck.com
2300 W. CUMBERLAND ST. (Rt. 422)
LEBANON, PA 17042
 (Across From Lebanon Valley Mall)

CAR VILLAGE

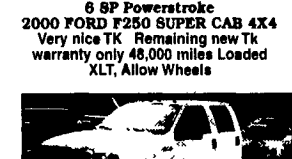
1-800-650-1420
717-274-2000



DURAMAX - ALLISON
 2001 GMC 2500 HD SUPER CAB 4X4
 Very Strong Truck, Duramax Diesel, Allison Auto - Top Pkg Limited Slip Axle, Capt chairs, console Rhino Liner Heavy 9200 GVW



6 SP Powerstroke
 2000 FORD F250 SUPER CAB 4X4
 Very nice TK Remaining new Tk warranty only 48,000 miles Loaded XLT, Alloy Wheels



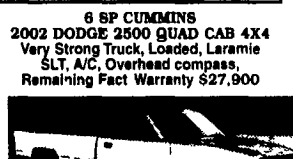
DON'T BUY NEW LOOK AT THIS
 2003 DODGE 2500 HEAVY DUTY CREW CAB
 Only 1,000 Miles, 24 Valve Cummins Turbo Diesel, Auto., Loaded Laramie SLT. A Beauty and Only \$34,900



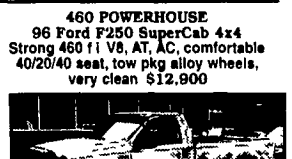
DIESEL CARGO VAN
 2001 FORD F350 SUPER CARGO VAN
 Only 40,000 Miles, Remainder New Ford Warranty, Extended Length, Powerstroke Turbo Diesel, Auto, AC, Limited Slip Axle Means Great Traction Tow Pkg



6 SP CUMMINS
 2002 DODGE 2500 QUAD CAB 4X4
 Very Strong Truck, Loaded, Laramie SLT, A/C, Overhead compass, Remaining Fact Warranty \$27,800



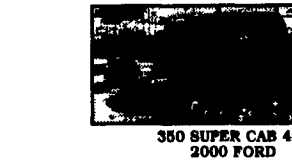
460 POWERHOUSE
 96 Ford F250 SuperCab 4x4
 Strong 460 ft V8, AT, AC, comfortable 40/20/40 seat, tow pkg alloy wheels, very clean \$12,800



2 WHEEL DRIVE
 2000 FORD F350 SUPER CAB DUALY
 Giant Tow Machine, Only 57,000 Miles, Powerstroke Turbo Diesel, 6 Spd., XLT Pkg, Nice Clean Truck **Only \$22,900**



4 DOOR CHASSIS
 2001 FORD F350
 4X4 Waiting for your Body Only 19,000 Miles, Powerstroke Turbo, diesel, Auto, AC.



6 SPD. DURAMAX
 2001 GMC K2500 CREW CAB 4X4
 Hard To Find, Good To Own, Only 58,000 Miles, Remain New Tk Warranty, 6 Spd Manual, Alloy Wheels, Tow Pkg



6 SPD. DUALY
 2000 FORD F350 SUPER CAB 4x4
 Great Tow Machine, Power Stroke Turbo Diesel, 6 Spd, Loaded, XLT, Aluminum Wheels, Tow Pkg, Only 49,000 Miles



5SP CUMMINS
 98 DODGE 2500 4x4 PICKUP
 Heavy Duty 3/4 Ton Impressive Cummins Turbo Diesel, A/C, Tow Pkg \$17,900



6 SP Powerstroke 2001 FORD F250 4x4
 Only 18,000 Miles, Like New Remaining Ford Warranty, Powerstroke Turbo, Diesel 6SP AC, Heavy 8800 GVW



GORGEOUS
 97 FORD F250 SUPER CAB 4x4
 Only 61,000 Miles, Powerstroke Turbo Diesel, Auto, A/C, Loaded XLT, Alloy Wheels, A Must See



350 SUPER CAB 4x4
 2000 FORD
 Heavy Duty, Single Wheel, 9900 GVW, Powerstroke Turbo Diesel, Auto, A/C, Alloy Wheels, Tow Pkg., Great Looking TK



BIG GAS
 97 CHEVY 2500 SUPER CAB 4X4
 454 V8 Auto, A/C, Heavy 3/4 Ton 8600, GVW Runs + Drives great \$8,900



6 SPD. CREW CAB 4X4
 99 FORD F350 XLT LARIAT
 Beautiful TK., Powerstroke Turbo Diesel, 6 Spd, A/C, Leather Seats, All Pwr Equipment, Alum Wheels, 63,000 Actual Miles

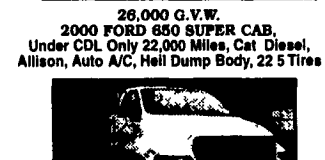


HEAVY CHEVY
 2001 CHEVY SILVERADO 3500 4 Wheel Drive
 Gorgeous - Like New Only 12,000 Miles Remain New Tk Warranty, 8100 Vortec V8, Allison, Auto, A/C, Limited Slip Axle, Very Strong



FLATBEDS, WORK & DUMP TRUCKS

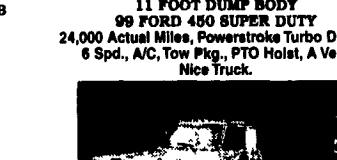
26,000 G.V.W.
 2000 FORD F350 SUPER CAB 4x4
 Under CDL Only 22,000 Miles, Cat Diesel, Allison, Auto A/C, Hell Dump Body, 22 5 Tires



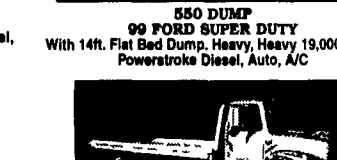
2000 FORD 550 SUPER DUTY 4x4 CREW CAB
 Powerstroke Turbo Diesel, 6 Sp., A/C, Vinyl Seats & Floor.
\$25,900



11 FOOT DUMP BODY
 99 FORD 450 SUPER DUTY
 24,000 Actual Miles, Powerstroke Turbo Diesel, 6 Spd., A/C, Tow Pkg., PTO Holst, A Very Nice Truck.



550 DUMP
 99 FORD SUPER DUTY
 With 14ft. Flat Bed Dump, Heavy, Heavy 19,000 GVW, Powerstroke Diesel, Auto, A/C



4x4 FLATBED DUMP
 97 FORD F350
 Powerstroke Diesel, 6 Spd., A/C
\$17,900



650 FLATBED 2000 FORD SUPER DUTY
 Only 2,000 Miles, 26,000 GVW, Under CDL License, 3126 Cat., 6 Sp., 14 Ft. Stahl Body, Priced Right \$31,900



4x4 UTILITY 1982 CHEVY
 Runs great, 80,000 original miles
 350 V8, Auto, 9 ft. Reading Box, Ladder Racks,
\$7,900



FARMERS FRIENDS
 88 DODGE
 Only 60,000 Miles, 350 V8 Auto, 3yd Dump, Runs Well,
\$7,900



2000 IH ROLLBACK
 Like New, Only 29,000 Miles, 18ft. Jerr Dan Bed, Wheel Lift, Light Bar, Chrome Everywhere



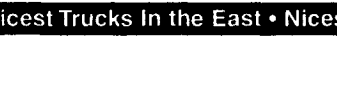
GOOSENECK HAULER
 2001 DODGE 3500 4x4 FLATBED
 High Output Cummins, 6 Spd, A/C, 10ft Aluminum Bed, Gooseneck + Class 3 Hitches



SUPER CAB DUMP
 2000 FORD F350
 A Very Desirable Truck, Clean, Only 65,000 Miles, V10, Auto, A/C, 9 Ft. Body, Insp & Services
\$22,900



TOW MACHINE
 2000 FORD 550 CREW CAB,
 4x4 Eby Aluminum Body, gooseneck + class 4 Hitch, Powerstroke Turbo, Diesel, auto, AC, Loaded XLT. Check it out



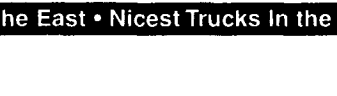
350 FLATBED SINGLE WHEEL 2000 FORD F350
 5 4 Triton V8 Auto, A/C, Vinyl Floor & Seat, 8 1/2 Ft. Aluminum Bed, Fold Down Sides, Handy Truck Around The Farm
\$13,900



15,000 GVW.
 99 FORD 450 DUMP TRUCK
 Only 44,000 Miles, 6 SP Manual Trans Powerstroke, Turbo, Diesel, AC, Tow Pkg Very strong \$23,900



ENCLOSED MECHANICS TRUCK
 95 CHEVY 3500 4x4
 Only 66,000 Miles, High Output 6.5 Turbo Diesel Auto, A/C 9 Foot Body, Meyer Power Angle Plow



Nicest Trucks In the East • Nicest Trucks In the East • Nicest Trucks In the East • Nicest Trucks In the East • Nicest Trucks In the East • Nicest Trucks In the East