



WENGBERS

814 South College Street Route 501
Myerstown, PA 17067-0409

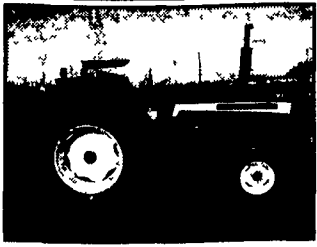
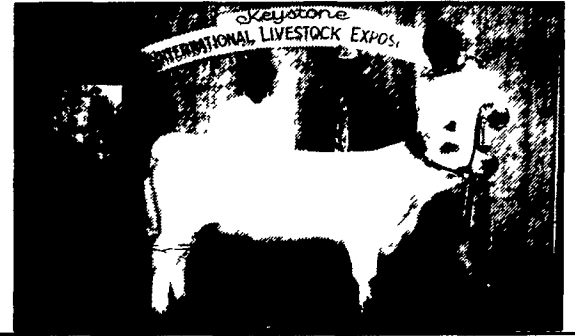
(717) 866-2135

wengers.com

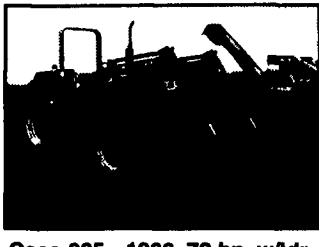
OF MYERSTOWN

Grand Champion BULL

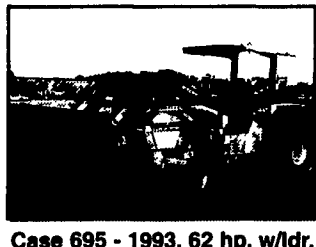
White Park Show
Keystone International
Livestock Exhibition



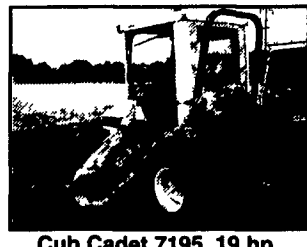
Case 585 - 1988, 52 hp, 2 sets remotes, nice



Case 885 - 1986, 72 hp, w/ldr, good buy



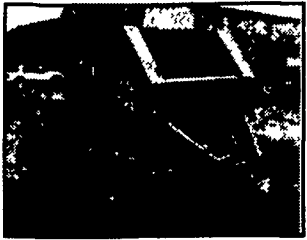
Case 695 - 1993, 62 hp, w/ldr, low profile, runs well



Cub Cadet 7195, 19 hp, mower deck, sweeper



186 IH Hydro, 105 hp, nice



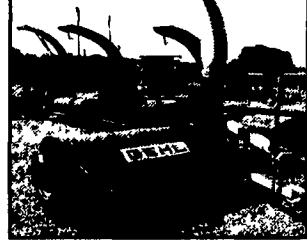
NH 634 Rd baler good condition



JD 385 Rd baler, nice



JD 16A Fall Chopper, 6ft, good knives, clean, faded paint



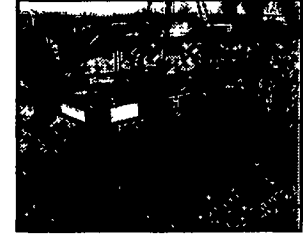
Gehl 7200 nice chopper, 6' cut width, incl lift cyl



JD 1460 MoCo, Good Condition



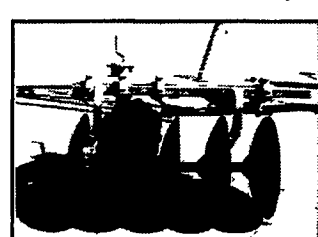
Case IH rollover 3pt repainted



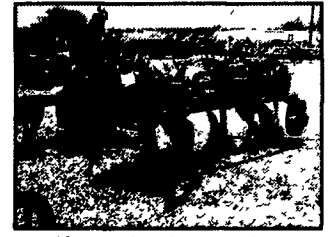
Harrell Switch plow 4x model 2802



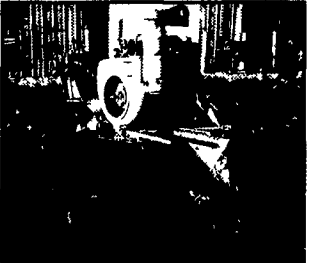
IH 3x16 auto reset, depth wheel, has colters



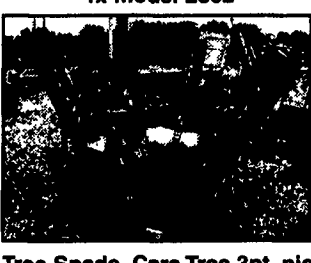
JD 3pt disc, very good, 5 discs



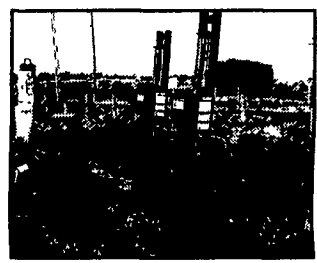
Kverneland, very sharp, colters, variable width



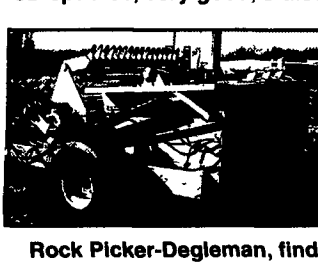
Stump Grinder, good, 35 hp



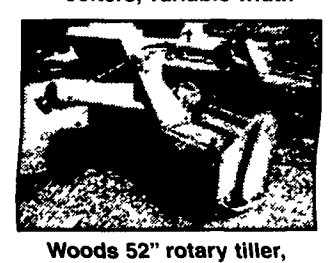
Tree Spade, Care Tree 3pt, nice



Post Pounder - Work Saver, new



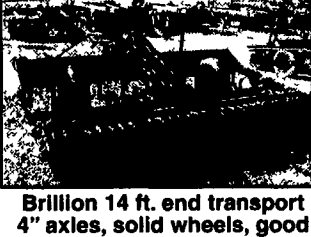
Rock Picker - Degleman, find 1 like this!



Woods 52" rotary tiller, paint on the tines, little use.



JD 12 ft. roller harrow, good shape



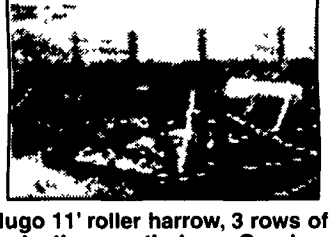
Brillion 14 ft. end transport 4" axles, solid wheels, good



Brillion 10' cultimulcher, original, little wear



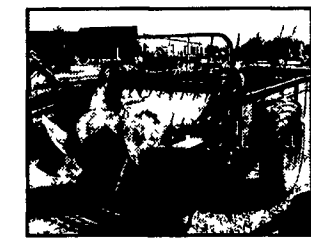
Dunham 6' cultimulcher, good



Hugo 11' roller harrow, 3 rows of teeth, smooth drum, Good



IH 530- 148 cu. ft. cap., top beater, clean



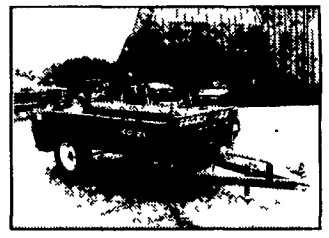
New Idea 12 A - solid, fair price



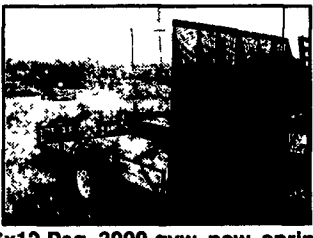
Millcreek 75 TD limited usage, very nice



JD R grad. dr. good worker, poor paint



Pequea 80 pto NEW/ warranty



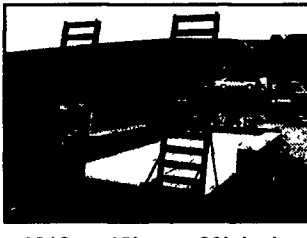
6x12 Peq. 3000 gvwt, new, spring assist, mesh ramp



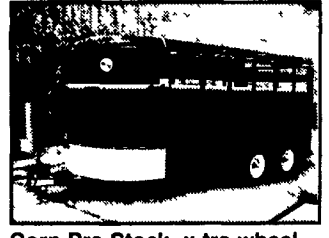
Shirk Trailer, 16'x91" 3axle, heavy duty



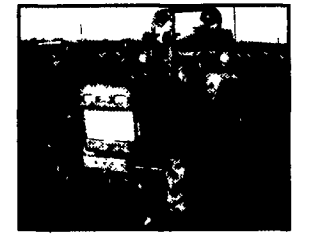
716 Deckover 7kgvw, HD mesh, new



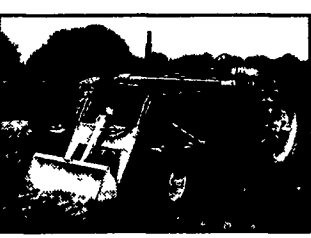
1016 ss 12kgvw, 20' deck, ladder ramp



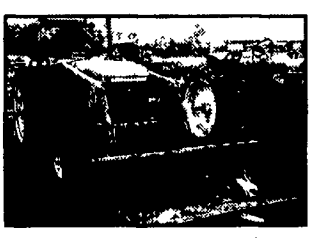
Corn Pro Stock -x-tra wheel, new, burgundy, or pewter



1520 Ford, 20 hp, maintained



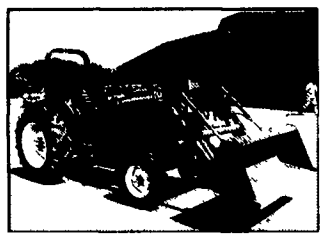
JD 50 30 hp 1955 Clean, runs good



JD 2550, 66 hp, 1984, 146 ldr, solid



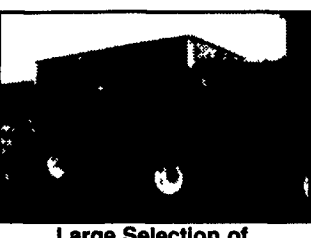
Kubota call for pricing



Ford 3930, 45 hp, 1998, diesel, ldr, nice, clean



Badger Forage Wagon w/Tandem gear



Large Selection of Gravity Wagons



**Snowblowers
Think
Snow**



Allis Chalmers, 19??, Meyers blade, runs good, durable