

NOVEMBER

SAT. NOV 1 - NY Holstein Harvest Sale, Cornell University, Ithaca, NY, Auct. Cattle Exchange AU-002463-E 607-746-2226

SAT. NOV. 1 - 8AM 120 ac farm, antiques, guns, tools & farm machinery on Stein Lane (Union Co.) by Wayne Hess AU-000411-L 570-922-1206.

SAT. NOV 1 - 8:30AM Real Estate (at Noon), antiques, hh gds., farm tractors & equip., hand & garden tools, at 4083 Blue Hill Rd., Hanover, PA, by Randy L Hilker AU-002095-L 717-633-5272.

SAT NOV 1 - 9AM Real estate, horse trailer, diesel tractor, etc. 764 White Oak Rd., Strasburg Twp. Probst Family Auction 717-464-3700.

SAT NOV 1 - 9AM Longaberger baskets by

SAT. NOV. 1 - 9AM Mel's Stables Horse Sales - Auctioneer, 834 Wallace Rd., New Holland, PA, Home 717-354-8397; Barn 717-354-6431

SAT. NOV 1 - 9AM Dairy Cows, heifers, farm mach, tools, at 153 Martin Rd, Pine Grove, PA, Schuykill Co., for Wilmer & Lucille Martin, by Snyder's Auct Serv. AU003489-L 717-291-5747 or 733-7052

SAT NOV 1 - 9AM Public Auction, real estate (2 BR ranch house), tractor, car, antiques, furniture 619 Mt Vernon Rd, Gap, Michael J Martin, Auct. 717-354-3197

SAT. NOV 1 - 9:30AM Pers. prop. farm/tool/machinery equip, vehicles, boat, misc. at 3 miles east of Rossville, IN by Marvin Mohler AU0133715, 1-800-487-6435.

**PUBLIC AUCTION
SATURDAY, OCTOBER 11, 2003
10:00 A.M.**

**Tractors, Equipment, Tools, Farm Collectibles,
Household Goods, & Miscellaneous Items.**

Location: 3061 Farmington Road, Harrington, DE. When traveling on U.S. Rt. 13, turn west onto Fairground Road, to go stop sign and turn left onto Farmington Road, 1st farm lane on the right (Note: Fairground Road is on the north side of the DE State Fair Grounds).

Tractors: Ford 2000 gas with power steering (only 813 hrs.), JDB single wheel (serial no. 8290065).

Equipment: 2) JD 1065 A flat wagons, 111 8 ton flat wagon, NH 8T flat wagon, 2) funnel wagons, running gear NI 214 manure spreader with top beater (nice), NI 206 spreader, IH 11 ft. transport disc, Brillion 12 ft. solid packer, IH 540 4x16 semi-mount plows, Ford 6 ft./3ph rotary mower, 6 ft./3ph Ford blade; Ford 2x165 3ph plows, 3ph carrier, 3ph cult, 3ph boom pole, 2 sec. spring tooth, saw bench, Central Tractor post hole digger.

Farm Collectibles: Oliver 19 walking plow, Oliver 13 walking plow, new ground walking plow, walking ditcher, Oliver #2 walking plow, Syracuse 3ph plow (homemade), walking cultivators, Keystone #4 2-hole corn sheller, 2-hole corn sheller, corn stab planters, **Golden Acre Tin Seed Signs, Golden Acres Seed Thermometer, Marvel Beverage Sign,** 2) Blacksmith forges, large lard pot, cast iron seat, platform scale, lead pot & ladle, Blacksmith vises, 3) anvils, #3 dinner bell, 2) man cross-cut saws, lanterns, wood wheel pony cart, **Single Seat Outhouse,** wood planes, draw knives, Shell grease can, corn sheller (Bench mount), Pitcher top pump, egg basket, JD Squirt can, slide scale, 2) Farm Aid hot water heaters, and other items.

Miscellaneous Items & Tools: Power hacksaw, fence charger, bench grinder, chains, brace & bits, sockets, CT tool box, B&D saw, air compressor, metal top work bench, C clamps, scoop shovels, pitch forks, silage fork hand truck, sledge hammer, pipe wrenches, Homelight ditch pump, ext. ladder, clevises, wood bits, chisels, screwdrivers, grease guns, hand saw, hand cult., 16 ft. gates, 275 gallon oil drum, water tubs, feed tubes, ice tons, wire, tack boxes, bramble scythe, push mower, push planter, welding rods, IH plow shears, chicken nest & feeders, 2 step step, round blocks, and other items too numerous to mention.

Household Goods: 3) piece Victorian Set (2 chairs, love seat, upholstered seat & back), china closet, buffet, dining table, (2) single beds, 3 draw bureau, kitchen table & chairs, Singer Sewing machine, 2 piece living room suite, wooden file cabinet, vanity with mirror, **Bath Tub with Claw Iron Feet,** corner cupboard, trunks, floor lamp & stand, stand out sink, oil lamps, beds, Coo-coo clocks, crocks, Agot pot, Old Philco TV, Tom Mix comic book, and other items too numerous to mention.

TERMS: Cash or approved checks day of sale.

**Auctioneer:
Sam Walters, III
(302) 284-4619**

**Selling For:
George & Edward Hobbs**

**Not Responsible for Accidents
LUNCH SERVED**

Public Auction Register

**Closing Date Monday 5:00 P.M.
of each week's publication**

**LARGE TOOL
AUCTION
Sat. Oct. 18, 2003
@ 9 AM**

Location: Jacobus Fire Hall, Jacobus, York Co, PA

Lots of block planes inc horn, transitional, gutter, brass-edged boat builders; Rabbet, Dado, **wheelwright**, joiner; Breast & hand drills; Draw plane; Drawing knives; Hand augers; Var woodworking clamps; 100s wood molding planes; Lots braces inc **off set**; Early Yankee screwdrivers; Lots shaves; **Mortisr cutter w/extra blades**; Auger bit set in wood box, never used; Parallel clamps; Lock-in clamp; 1 & 2 man cross cut saws; Early braces; Nice benchtop hand crank wet stone w/tool holder; Broad axe; Ice forks; Files; Scribes; Chisels; Tap die set; Awls; Misc hand tools; Var hand tools; Ols survey measure; Story pole; Wood tripod; Old Buff transit; Lg tire chain tool; Wheelwright tool; Lots squares; Dividers; Hand adz; Wooden vise; Hand scrapers; Wood levels; Early 50's tape; Hatchets; Plumb bobs; Early folding rules; Blacksmith tools; Monkey & strap wrenches; Pipe fitter hacksaw; Miter box; Sickles; Blow torch; Solder irons; Marking guages; Saw vises & sets; **100 old Japanese tools** inc saws, planes, chisels, hammers, ink lines; Old RR bag cart; Lead ladle; Tobacco hoe; Shoe lath; Stoaker's fork; Wood hay rakes; Lg old wood tool-box; Wood 5 drawer shop cabinet; Wood tool shipping box; Ace store paper roller; Strap-on ice skates

Note: This is an all day sale. Most of these tools are in nice condition.

Terms: Cash or good check. Not responsible for accidents. Refreshments provided.

AUCTIONEERS:
Kenneth Keeny (AU2797L)
717-993-3448
Marlette Thomas (AU3251L)
Paul Miller (AA2823L)

OWNERS:
Collection of
Dave Thompson
of Hyde, NY
Dan Benshoof, Agt.

**REAL ESTATE
AUCTION**

Two Parcels To Be Sold

**- Location -
On Route 54 near Washingtonville, PA.
Watch for Auction Signs.**

**Wed., October 15, 2003
4:00 PM**

2,000+ feet of road frontage on Route 54. No zoning. Nice level land. **Parcel #1** consists of 60+ acres; 42 acres tillable with 18 acres wooded. **Parcel #2** consists of 57+ tillable acres.

Real Estate Terms: 3% buyer's premium charged on real estate. Seller has the right to accept or reject any or all bids. Settlement 30 days or sooner from the sale date upon delivery of clear deed. \$4,000 down payment due at time of sale.

Fry's Auction, Inc.

Auctioneer Norman E. Fry License #AU-001479L Phone: (570) 546-6991
Auctioneer Alan E. Fry License #AU-001615L Phone: (570) 546-8560
400 Village Road • Pennsdale, PA 17756

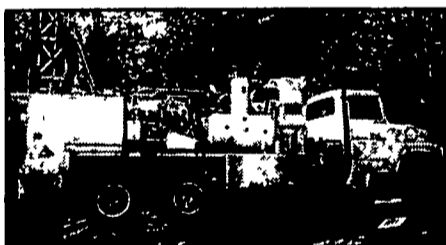
**The Complete Liquidation at Auction of a Three Generation
Well Drilling Company**

ROGER L. DEHAVEN WELL DRILLING, INC.

located on-site near

WINCHESTER • VIRGINIA

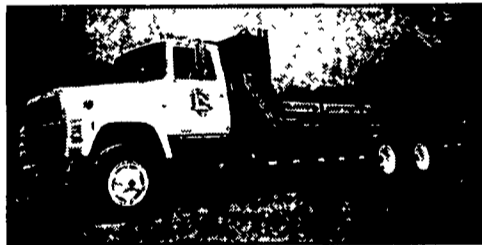
Thursday • October 16 • 2003 • 11:00 am



1987 Drilltech 25 mounted on Ford L8000



1985 Ford F350 w/Smeal MFG crane/pump puller



1979 Ford L8000 Service Truck w/24ft body 1800 gal water bed



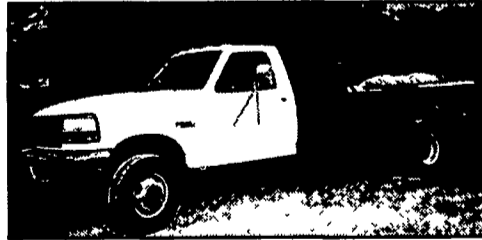
1995 Drilltech 25 mounted on Ford L8000



1978 Ford L8000 s/a w/steel dump, snow blade, CAT Diesel



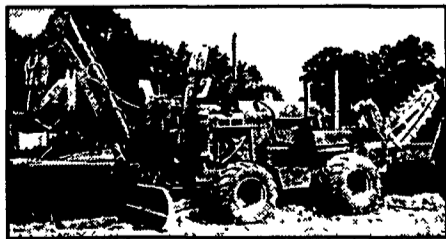
1994 International 8200 service truck w/20ft body 1000 gal water bed



1994 Ford F350 Grout Truck, all wheel drive, 500 gal water bed



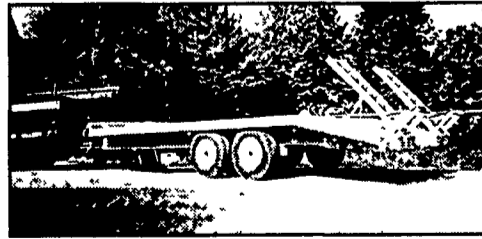
10 by 30 Office trailer w/electric heat/ac



1980 Ditch Witch R40 w/Backhoe, R65 Digging End



CAT D3 Track Dozer, 6 way blade, OROP w/sweeps, winch, 79V2745



1990 Hurst t/a tag along trailer, beavertail w/ramps, electric brakes



1982 GMC Bus, 318 Detroit, Allison trans.

also selling...

• Hyster and ditch witch trailers • 1900 feet of drillrod • 10 inch hammers with bits • 6&8 inch bits • roller bits • 6inch down the hole hammers • carbine bit grinder • (12) 4x8 Sheets of Fiberglass Mud Tracts • (2) Lincoln Ranger 8 gas welders • Plus other related items not mentioned in this partial listing

*Call Cochran's For Free Brochure at 301-739-0538

DIRECTIONS: Dehaven's former yards and shops are located off Interstate 81 at Winchester onto VA Route 37 to U.S. 522 north 7 miles, right on VA 608/Hunting Ridge Rd. 4 miles, right on VA 682/Glaize Orchard Rd. then left onto Well Drillers Lane (watch for auction signate).

TERMS: Cash or approved check on day of auction with positive identification required for registration. Not responsible for accidents. Foods and facilities available on-site. **NO BUYERS PREMIUM.**

**JAMES G. COCHRAN
CEO/Auctioneer**



J.G. Cochran

**AUCTIONEERS & ASSOCIATES LTD.
PROFESSIONAL AUCTIONEERS & APPRAISERS SINCE 1972
7704 Mapleville Rd., P.O. Box 222, Boonsboro, MD 21713-0222
(301) 739-0538 • TOLL FREE (MD) 1-800-310-2844 • FAX (301) 432-2844
PA Lic. 2905001216**

**THOMAS E. BIKLE
Director of Marketing**



NATIONALLY RECOGNIZED - AWARD WINNING AUCTIONEERS SINCE 1972