

Annual Fall Consignment Antique Tractor & Machinery Auction Monday Oct. 13, 12:00 Noon C. Yoder & Frey Machinery Auction Yard Archbold Ohio

JOHN DEERE: 39' A w/rear Steel Wheels; 45' A w/Long hood, original; 50' A w/3 pt; AW w/new tires, paint, nice; 43' AR unstyled; M w/IX plow; 40 w/cultv's & 1 x plow, nice; 60 LP Gas, N.F.; 70 dsl 5 pt W.F. power steering; 70 dsl N.F. (motor stuck); 60 N.F. power steering, good; 420 3 pt. p.s., live pto; 430 W w/single front wheel, 3 pt, like new tires; 1010 RU gas, p.s.; 1010 Rs gas, 3 pt, 1R cultv (original); 1010 gas, 3 pt; 2010 RU gas, p.s. w/Ldr; 440 Crawler Loader, GM 2 cyl dsl (motor stuck)

INTERNATIONAL: 39' F20; F20; 56' Super W9 dsl, nice; 43'H (original); 2-cub's; 39' M; 51' M w/ power pack, new tires, fenders (sharp); 2-M's; 300 gas, w.f. w/ldr; 300 gas; 350 utility, gas w/ldr, Fast Hitch, Blade & tire chains; C gas, w/mower; super C gas, Engine O.H., w/Ldr; 52' Super C, fenders & loader; 706 (Replica built to scale w/Kohler 7 hp Eng. & Int #32 Pull sickle mower;

OLIVER: Super 5s gas, 3 pt; 88 gas, N.F.; 60' 550 gas w/ldr; 770 gas, N.F.; 1750 dsl (nice) 60' 440 gas, new tires & paint

COCKSHUTT: 30; 60 w/ldr;

ALLIS CHALMERS: CA w/belly mower; 2-D19 Dsl's Minneapolis Moline Z (nice); 1600 A4T 4x4, Cab, Duals; BF Avery, partially restored; Case - David Brown 300 gas; TR: Tractor; Massey Harris 40; 44 gas, runs good; Ford-Ferguson 26' Ford sdn; 9N (original); 8 N's; To-35; TE20

MACHINERY - COMBINE - HIT & MISS ENGINES

MF 300 gas combine w/13' Quick Tatch Grain Head (nice); Disks, Cultivators, pull type & 3 pt plows, square deal pull road grader, walking plows, grain drills, Oliver 73H 2 row Picker, tractor weights, buggy wheels, and much more old items added daily!

TOYS

Pedal Tractors JD 20 & 4430; Ertl 1/16 scale in box precision models - JD70 Dsl; Ford Jubilee JD Barge Wagon; JD 4000.

NOTE: This is only a partial listing of antique tractors & machinery that will be auctioned Oct. 13, @ 12:00 NOON! Due to Adv. deadline, Yoder & Frey will be taking commitments up until start of Auction! Business hours are M-F 8:00 - 5:00 & Sat. 8 till 12:00 Noon! Reminder Tues. Oct. 14th @ 9:30 AM Regular Consignment Auction & Absolute Rows! Yoder & Frey will not be responsible for No show's! Everything Sold as is.

Yoder & Frey, Inc.

3649 Co Rd 24, Archbold Oh 43502

(419) 445-2070 1-800-364-2870

Fax: 419-445-2090



Public Auction Register

Closing Date Monday 5:00 P.M.
of each week's publication

Internet Sale Register will be updated
by Friday at 12 Noon

ATTENTION AUCTIONEERS

All sales register info needs complete address,
street, town, county & state.

SAT. OCT. 18 - 9AM Lumber/bldg. supplies at I-78 Berks Co. PA by Dwight Miller, 717-933-536.

SAT. OCT 18 - 9AM 55 Furniture, Colony Fostoria. Household goods,

tools, etc. 55 Hideaway Dr., Colerain Twp. Jessics Shaub Meyer, Auct. 717-464-3541.

SAT OCT 18 - 9:30AM Estate Auction, vehicles,

tools, equipment, office furn, misc. at Hagerstown, MD by J.G. Cochran 301-739-0538.
SAT. OCT. 18 - 10AM Fall riding horse "catalog" sale & craft bazaa, Middleburg, PA 570-837-2222.

FRI/SAT Oct 17&18, 10AM Surplus fine woods, walnut, cherry, white/red oak, poplar, ash, pine, birch, hickory, misc. at Willard Brothers, Trenton, NJ 609-890-1990.

SAT. OCT. 18 - 12PM Absolute real estate auct. Tuscarora Twp., Juniata Co., Bryan D. Imes, Auctioneer 717-527-2449
SAT. OCT. 18 - 12 Noon real estate and inventory of appliance store, Richard A Kramer, AU003135-L, 717-933-8219

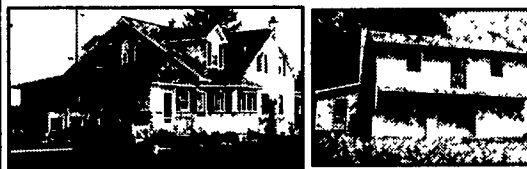
SAT. OCT. 18 - 3:30PM 1/2 ac Real Estate, 2 1/2 sty. brick dwelling, 18kw power plant (to be sold separately) at 2646 Division Highway, Lanc. Co. PA, by Horst Auct AU438L 717-859-1331

SAT OCT 18 - 7PM Clubmont Invitational Pied Calf Sale, Frederick Fair-burg, PAE Fortna Auctioneers, Kevin J. Diehl, Sale Manager 717-642-5077.

PUBLIC AUCTION

1-1/2 STY. 5 BDRM. DWL.
BARN/GAR. - SHOP
2-1/2 ACRES
STRASBURG AREA
PARADISE TWP.
WED., OCT. 15
4 P.M.

861 Wolf Rock Rd., Paradise From Strasburg take Rt. 896 south approx 4 miles, turn left on White Oak Rd., approx 1 mile to village of Nickel Mines, turn left on Mine Rd to Wolf Rock Rd Property corner of Wolf Rock Rd & Mine Rd



1-1/2 story perm stone & vinyl house with 2540 square feet Large country kitchen, living & family rms., laundry, sewing rm., 1st floor bdrm, full bath, 2nd floor 4 bdrms. & full bath Barn/Shop is 2 sty masonry & stucco bldg 28'x32' w/2 horse stalls & 2nd floor workshop 28'x26' equipped w/diesel & hydraulic air sys

2-1/2 acre tract. 1-1/2 acre fenced pasture Balance lawn & garden area

NOTE: Bldgs in exc cond Exceptional country location Inspection by appointment or open house Sat., Oct 4, 11 from 1 to 4 PM For color brochure, land plotting & financing call Auctioneers 717-733-1006

BENJAMIN S. & CHRISTINA R. STOLTZFUS
717-786-8154

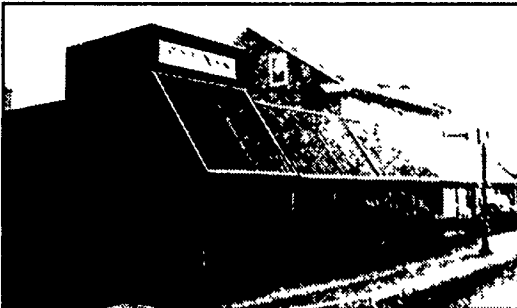
Randal V. Kline, Roy E. Good, Jr., Keith Snyder, Auctioneers Lic. #499L - #2116L - #3433



ABSOLUTE AUCTION

COMMERCIAL REAL ESTATE

MON., OCTOBER 20
@ 6 PM



18 E. Main St., Annville, PA
Inspection on Monday, October 6th
5-7 PM

10,000 sq. ft. building plus 3 apartments and off street parking for 30 cars. Located in Historic District of Annville, Pa., near the square (intersections of Rts. 422 and 934).

First floor is a 5000 sq. ft. showroom with offices, bath & kitchen. Lower level is 5000 sq. ft. warehouse w/loading dock & ramp. Also on this level is an apartment consisting of 1 BR, LR, kitchen & bath. The second floor houses 2 apts. Apartment one being a 1 BR, LR, kitchen & bath. The other second floor apt. is a 3 BR, LR, kitchen, bath & attic storage.

This is a wonderful opportunity to purchase a great multi-purpose building with excellent cash flow that is located in the heart of the downtown business section of Annville. The streetscape Project is now completed and this would make an excellent location for any business!

Terms: 10% deposit with balance due in 45 days. This is being sold absolute and will sell to the highest bidder regardless of price.

Please visit our website for more info & photos at www.paefortna-auctioneers.com

717-867-4451 717-236-3752

AU1711-L/AU1367-L

**PAE
FORTNA
AUCTIONEERS**



MACHINE SHOP & RIGGING EQUIP.

PUBLIC AUCTION

TUES., OCT. 14, 2003 4:00 P.M.

901 S. Richland Ave., York, PA

DIR.: From Rt. 30 west of York take Rt. 74 exit, follow Rt. 74 1 1/2 miles south to Rt. 462 (Market St.) and go west on 462 to first light and turn left onto Richland Ave, go 1/2 mile and go under railroad bridge, & turn left, watch for signs.

MACHINE SHOP EQUIP.: Meuser 8' gap bed lathe 18" swing w/ 3 & 4 jaw chucks, Bridgeport mill w/ power feed, Bridgeport single phase mill (as/is), (2) Hougén magnetic drills 1/2" chuck & rota broach chuck, Set of Rota-broaches, Clausing variable speed drill press 10" throat, small Milwaukee horizontal mill, Johnson 6"x12" cut off band saw, Cincinnati radial arm drill press 24"x48" travel, Cazeneuve 590 HBY Tracer lathe 36" bed, 20" swing w/ air chuck, power hack saw, 3hp air compressor, arbor presses

MACHINE TOOLS: (5) mill vises, 3 & 4 jaw chucks, Morse taper chucks, all kinds of milling cutters and lathe tools, reamers, (100's) of drill bits 1/16" x 2", belt sander for lathe, 1" belt sander, broach sets, letter & # stamps, Starrett & Mitutoyo measuring tools: mics 1" to 8", indicators, inside & depth mics, 12" & 24" square sets, (6) Starrett levels: inc 15 master precision level & more

MACHINERY RIGGING EQUIP.: (2) sets of machinery skates, 110v Ener-Pac portapower, forklift jib, Yale 6,000lb 2 stage mast 14' forklift, fork extensions, pallet jacks, (4) railroad jacks, 20 ton hyd. bottle jacks, heavy chains, (12+) chain hoists 1ton-6 ton (some single phase, some 3 phase & manual), screw jacks, (6+) porta powers, 8,000 lb hyd. forklift jack, Johnson bars, (10) 3/4 ton chain comealongs, (2) 6 ton comealongs, chain puller set, slings, Starrett 99F transit & More

WELDING: Lincoln Invertec V300-Pro tig/mig/stick welder w/LN-29 wire feeder, 5'x5' Acorn welding Platen w/ clamps, Lincoln Ideal-Arc R35 Arc welder, 3 torch sets, torch access., weld tables, new mig welder liners & parts, 150 lb anvil, old plasma cutter, & more

TOOLS: (2) Delta Jobsite tool boxes, (2) job boxes, Kennedy roller cabinets & tool boxes, flameproof cabinet, 7' folding scaffolding, (7) sections 5' scaffolding, (3) sections 3' deep 8' high pallet racking, Georgia buggy, elec. cement mixer, jack hammers, rock drill & bits, Rigid pipe wrenches 36" & 48", Rigid ratchet threader & tri stand, Toledo 999 power pipe threader & dies, carts w/ bins, workbenches & vises, metal cabinets, bolt bins, c-clamps, cable cutters & crimpers, Greenlee metal stud knockout punch, 3/4 & 1/2 Craftsman & Armstrong socket sets & wrench sets, 3/4" & 2" impact wrenches, (2) large posi lock pullers, 1/2 & 3/4 impact sockets, Snap-On torque multiplier, Snap-On ratchets, 3/4 drive torque wrench, air drills, grinders, chippers etc., Milwaukee porta band saw & rotary hammer drill, air hose reel, banding tools, 7'x9' portable office, (5) Kenwood walkie talkies, electronic infrared heat gun & more

Skiylift 750 scissors 22' lift (broken axle)

STEEL: 20' I beam w54x1, (20) 14' 6"x6" steel posts, 100's of pcs of 12' bar stock: round, flat angle, steel racks, 4'x4' steel dumping hopper, & more

Seller: Mike Myers Terms: cash or good check

Removal Dates: Tue. Oct. 14, Wed. Oct. 15, Sat. Oct. 18

ALL ANNOUNCEMENTS DAY OF AUCTION
TAKE PRECEDENCE OVER PRINTED MATERIAL

Rentzel's Auction Service Emigsville, Pa
Blaine N. Rentzel AU 761-L Dave Conley AU 3269-L
www.rentzelsauctionservice.com 717-764-6412



ABSOLUTE REAL ESTATE AUCTION

Tuscarora Twp, Juniata County
Sat., October 18, 2003

12:00 Noon

Auction located 17 miles south of Mifflin, PA along Route 35 at Reed's Gap.

2.85 Acres

2.85 acres in Tuscarora Township, Juniata County with .68 acres on the east side and 2.17 acres on the west side of Route 35, 35 with 296' of road frontage along Route 35, erected thereon a 2-story log dwelling, a one-story frame dwelling, many outbuildings and storage sheds, with one drilled well and two dug wells on the property. This property is partially wooded and has great potential for remodeling or building, or for use as a weekend getaway.

Terms: 10% down day of sale, cash or good PA check, balance due in 30 days

Showing Dates: by appointment, call Anna at 717-734-3786, Helen at 717-734-3903 or Wilmer at 717-734-3226.

2002 14'X56' mobile home, antique automobiles, guns, antiques & collectibles selling at 9 a.m.

Estate of Kenneth L. Williamson

Wilmer Williamson, Co-Executor

Helen Naugle, Co-Executrix

Anna Burdge, Co-Executrix

Bryan D. Imes & Sons, Auctioneers

R R 1 Box 902, Port Royal, PA

717-527-2449 AU-001656-L

PUBLIC AUCTION

REAL ESTATE

FULLY RESTORED

LOG HOME FARMETTE

IN THE MAHANTONGO VALLEY

DALMATIA, PA

SAT., OCT. 25TH, 2003

12:00 NOON

Directions: From Rt. 81 Harrisburg, take 322 W. to 147 N. thru Halifax & Millersburg, approx. 6 miles from Millersburg turn right on Mahantongo Creek Rd., approx 2 miles turn left on Adams Rd-watch for signs.

Situated in the twp. of Lower Mahonoy, base of the Mahantongo Mtn. Northumberland Co., a fully restored 2 story log home with a finished loft, front porch and a sun room. Sitting on approx. 8 acres in the Mahantongo Valley. First floor has living & dining room and a kitchen. 2nd floor consists of a lg bath and 3 bedrooms. Top floor is a finished lot. Home is fully restored with exposed logs on the inside and vinyl siding on the outside. 1800 sq. ft. of living space w/private water & septic Original stone bank barn w/all new top, hay barn, tractor shed and a 4 car garage & workshop. Fenced in pasture-a horse lovers dream.

A MUST SEE-A COUNTRY PARADISE IN THE MAHANTONGO VALLEY

Surrounded by private & public game lands & trout stocked Mahantongo Creek

Open Houses:

Sunday October 12th & 19th 1-3 P.M.

Or call for a private viewing.

Property is offered in present condition (non-contingent basis) and to be sold with sellers confirmation. Property is also subject to prior

Sale Terms:

\$20,000.00 down day of sale (cash or certified check.) Balance due on or before 45 days or at settlement. All announcements made day of auction, take precedence over printed material.

Owners: Randy & Darlene Hall

Cindy Fenton-Auctioneer

#AU-3412-L

Phone (717)834-9138