

**Public Auction Register**

SAT. OCT. 18 - Vehicles & automobila, time to be announced at 100 W Jackson St., New Holland, PA by Diefenbach Auct. AH000145L, 717-355-7253

SAT. OCT. 18 - 8AM Public auction. Rider's Mower Service Inventory. Log splitter, engines, parts, etc. 2145 Baltimore Pike, Hanover Randy L. Hilker, Auct. PA-AU-002095-L

SAT OCT 18 - 8:30AM 83 acre farm, tractors, farm machinery, hh gds, at 782 Hartman Station Rd., Lancaster, PA for Mr. B. Landis by Snyder's Auct. Serv. AU003489-L, 717-291-5747 or 733-7052.

SAT. OCT. 18 - 8:30AM Masonry & concrete equip., 13 vehicles, job handler, etc. Redding Auction Service, 717-334-6941.

SAT. OCT. 18 - 8:30AM Real est. 11AM, 55 A. m/f farm, machinery, tools, car, antiques, HH goods, at 271 Cold Cabin Rd., Peach Bottom Twp, Delta, York Co PA by Sechrist Auct #820 & #821, 717-244-0295 or 741-4489.

SAT. OCT. 18 - 8:30AM Real estate, farm equip., guns, tools, collectibles, 43 Crystal Drive, Holtwood, Martic Twp., Lanc Co., PA, Probst Family Auct. AU-001856-L 717-464-3700

SAT. OCT. 18 - 9AM Real Estate, collectibles, hh, in Beavertown, PA, by Robert L. Leitzel AU-002062-L 717-694-3287.

SAT. OCT 18 - 9AM Farm equip., antiques, hh gds, at 261 Baker Rd, Cochranville, PA, by Leon D Kurtz AU522L

SAT. OCT. 18 - 9AM Real estate, antiques, furn., collec at 5 Center Square Rd, West Earl Twp., Leola, PA by Miller & Siegrist Auct AU1723L, 717-687-6857.

SAT. OCT. 18 - 9AM Public sale of David Wyble's Cycle Shop. 2152 N. Reading Rd., Denver, Rt. 272. Art Pannebecker, 717-336-6983

SAT OCT 18 - 9AM Real est, 50 ac farm w/2-sty barn, 2 5 sty. farmhouse at 29 Park Dr, Grantville, PA by Nelson Ebersole AU001307-L 717-867-5221

SAT OCT. 18 - 9AM 5 mi W of Lewistown, PA along Lockport Rd approx 60 acres land w/house, barn and full line HH and antiques, Mark Glick Auct estate of Mary Kepler

SAT OCT 18 - 9AM Absolute Estate Auction. Tuscarora Twp, Juniata Co Bryan D Imes & sons, Auct. 717-527-2449

SAT OCT 18 - 9AM Auction of real estate and inventory from Russell Brown Appliance Store, 22 and 24 N Maria St., Richard A. Kramer, AU-003135-L, 717-933-8600

SAT. OCT 18 - 9AM HH goods, antiques, tools, furn, etc at 31 Hillcrest Ave, Leola, PA by R Martin 656-7770

SAT OCT 18 - 9AM Horses, pigs, goats, hay, farm equip, misc furn, St Mary's County Consignment Sale, MD by Mel Hoover AU003111-L, 717-354-8397, 717-354-6431

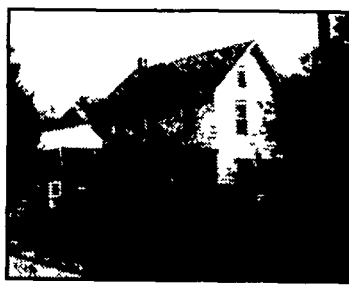
SAT OCT 18 - 9AM Hay/forage equip, plant/till equip, tractors, farm items, misc at 230 Krape Lane, Bellefonte, PA by Leon J Smith AU868L, 814-349-8633

SAT OCT 18 - 9AM Warner Garden Center, Nursery, Landscape, misc plants, equip, vehicles, at 422 E 662 North, Douglassville, PA by Gary Huseman Auct AU3086L, 610-987-6446

SAT OCT 18 - 9AM 45+ Acre Farm & Contents 3735 Route 103 North, Lewistown Stevens Auctioneering Service, 717-248-0586

**John M. Hess AUCTION SERVICE INC. PUBLIC AUCTION 8 ACRE REAL ESTATE, ANTIQUES, & PERSONAL PROPERTY 541 OLD PHILADELPHIA PIKE, DOUGLASVILLE, PA 19518 SAT., OCT. 11, 2003 9:00 AM**

Directions: From Pottstown, PA. Take Route 422 (Bypass) West to Stowe Exit. Turn left on Old Philadelphia Pike (Heading West). Go 1/2 mile on Old Phila. Pike, House is on the left. From Reading, PA. Take 422 East to Douglasville, PA. Turn right onto River Bridge Road. Take first left on Old Phila. Pike. Go 1/4 miles to house on right.



**REAL ESTATE: (12 noon) 8+/- Acres w/two story three bedroom frame home on a beautiful 8 acre lot. The interior of the home consists of modern eat in kitchen, full bath, living room and family room. On site sewer and water. Exterior of the home features lots of open spaces and large three-car garage/shop w/full second story.**

**Real Estate Terms & Conditions:** 10% down on day of sale. Balance due on or before 45 days

**Car:** 1986 Olds Regency 88

**Toys, Antiques, & Collectibles:** early toys; express wagon; scooter; slot cars; games; puzzles; models; Disneyland pinball; lg. selection of train complete sets & train parts incl. Lionel, American flyer/marx, HO, train literature, boxes, & transformers; miniature Queen coal stove; Mikasa china; Imperial carnival vase & other carnival; green depression; cobalt blue; Fenton; milk glass; crackle glass, etc; CI horses; buttons; early textiles; early literature; costume jewelry; canning jars; blue jars; silver plate; Disney collection; ad tins; chicken on nest; general household & glassware; baseball cards; pots & pans; rolling pins; cookie cutters, dehumidifier; pictures & prints; lg collection apples - cookie jars, sugars; strawberry sugars; early wooden nail kegs & wooden boxes; early hardware; lg. cream pitcher collection incl. German, Bavarian, Czech, & Lefter; baskets; luggage; coal bucket; Halloween items; cub scouts 1950; cameras; early Deitz lantern; lamps

**Furniture & Appliances:** Mission oak desk, early raised panel wood cabinet; lg Lane cedar chest; miniature dove-tailed blanket chest; rocker; glider; child's roll-top; chest of drawers; Singer Sewing machine; 4 pc Cherry BR set; table w/ 4 chairs; single bed; 2 pc BR set; entertainment center; desk; cane chair; clothes tree; picnic table; 2 air conditioners; upright freezer; chest freezer; microwave; Maytag washer; Kenmore dryer.

**Tools & Hunting:** gas engine/pump; ladders; shop vac; wrenches; craftsman socket sets; hand tools; gas engine/pump; chain saw; lawn tools; misc. car parts; draw knife; Harrington & Richardson .22 revolver; Harrington 12 ga. single shot; misc. ammo; Savage .243 caliber Bushnell; J.C. Higgins archery set in box; traps.

**Auctioneer:** John M. Hess AU-003484-L For more information call John: Dennis & Robert Wolgemuth Auction House-717-733-8192 or Home-717-664-5238

**VINTAGE HARLEY DAVIDSON'S & PARTS @ AUCTION!!!**

**SUN., OCT. 19, 2003 @ 12:00 NOON (Preview from 9 AM)**

*All From One Private Collection!*

**Meadow Brook Farm, 266 Derrs Rd., Benton, PA 17814 INFO: (750) 490-5795**

To be sold absolute auction: 1946 FL 74 C.I.D. Knucklehead: engine completely rebuilt, never fired, to be completed; 1946 80 C.I.D. Flathead: engine & trans completely rebuilt, never fired, to be completed; 1964 FLH Panhead: wide-glide front end, many orig. parts; 1964 FL Custom Panhead Chopper: low miles on rebuild, a beauty; 1967 FLH Full Dresser: over 95% original; 1968 FL Custom Chopper, wishbone frame; 1968 FLH 93 C.I.D. Custom Stroker, less than 1500 miles on complete rebuild, many extras; 1972 Engine & Tranny, eng. completely rebuilt, never fired; 1975 FX Custom Chopper, custom ridgid frame, many special features; 1984 Sportster, 1000 cc, extra chrome, excellent condition; lots of vintage parts; other related collectible items.

**SUCH AS:** 45 cu in ridgid frame; Panhead wishbone ridgid frame; Knucklehead ridgid straight leg frame; FLH swingarm frame; Other frames; Pr. 16 spoke FLH cast wheels; Pr solid Fat Boy wheels; Set of original FLH fenders w/fender tips & tombstone taillight; Stock Harley mechanical brake drum w/brand new Harley sprocket; 1966 to '69 inner & outer chrome primary covers; Several 16" wheel assembly's w/star hubs; 1973 Stock horse-shoe oil tank; Many other 1940s to '60s stock oil tanks; Linkert brass body carbs; Early complete stock extended springer front end for 74 cu in; New Goodyear & other tires; Original 1963-65 panhead 3/4 gal fatbob tanks w/emblems; 2 Early original wide glide front ends; 2 74 cu in springer extended front ends; Set of late model pan heads; Totally reconditioned; Brake drums & assemblies; 3 FLH buddy seats w/hand rails; 1 Set tear drop panhead saddlebags, fiberglass; 2 Sets FLH saddlebags complete; **Many early FLH windshields, seats, primary covers, sissy bars, exhaust pipes, fatbob tanks, handlebars, fenders;** Stock 45 cu in springer front end & transmission; 3 Sets leather saddlebags; Flathead cylinders & heads; Set of S&S stroker flywheels, rods, pistons; K&L computer wheel balancer w/weights; New flywheel trueing stand. This just gives you an idea of the quantity of vintage parts that we will offer!

**Assortment of Memorabilia from Harley Davidson & Snap-On**

**TERMS: Cash or approved checks only! A bank letter of credit must accompany checks to receive bid number!**

**DIRECTIONS:** From Rt 80 east or west exit at Buckhorn and follow Rt 42 north to Millville. At blinking lite in Millville turn right on Rt 254 east, go 5.5 miles to stop sign in Rohrsburg. Turn left & continue 2 miles on Rt 254 to Green Creek Rd. & turn left Go 2 miles to stop sign. Turn left on Derrs Rd. and follow 2 miles to site on right From Benton take Rt 487 south to R5 254 west, turn right and follow 3.5 miles to Green Creek Rd. on right Signs posted.



**Letteer Bros. Auction Co.**

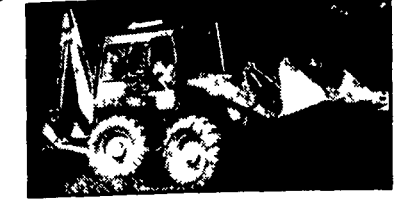
"Bridging the gap between buyer & seller"

266 Derrs Rd. Benton, PA 17814 Phone (570) 925-6564

Steve Letteer Auctioneer AU3170L

**Auction PUBLIC AUCTION OF BACKHOE - TRACTOR SHOP TOOLS & EQUIPMENT WEDNESDAY, OCT. 8, 2003 10:00 A.M. 1752 Heilmandale Road, Lebanon, PA 17046 Lebanon County, Penna.**

**DIRECTIONS:** Go 2 miles North of Lebanon on Rt. 72. Just past Heisey's Diner, turn left onto Heilmandale Road. Travel 1-1/2 miles on Heilmandale Road to lane on right. See auction sign.



**ITEMS SELLING:** Ford 9600 tractor with heavy duty loader and bucket, International 4WD backhoe, 10 tooth chisel plow, (2) 917 Ford 80" flail mowers with 3 PT hookup, Lucknow 8' snow blower 3 PT, V-snow plow with front end loader mount, 9-ft. heavy duty rear scraper blade 3 PT, John Deere 3 PT 3 bottom plow, John Deere 3 PT subsoiler, 3 PT cultivator, tow bar disk, 7-ft. Secar box scraper, Secar wood and rail splitter powered by tractor hydraulics, 8 ft. cultipacker - no tongue, PTO driven cement mixer 3 PT, electric cement mixer, secar 3 PT post hole digger with augers, off-road 4WD Jeep Wagoneer, 1986 Blazer diesel 4WD, Secar 12" double end grinder, 250 lb. anvil with base, (2) trash pumps with gas engines - one needs work, Miller Blue Star 600 with spool gun, Lincoln 250 stick welder, Lincoln SP-125 Plus welder, acetylene torch outfit, Craftsman 10" radial arm saw, metal lathe with 8" swing, metal forge and kiln, homemade shop press, Sears 12" band saw, 6" jointer, 4" jointer, table saw, 14' Gamefish aluminum boat with 15 HP outboard Gamefish motor and 12V car top loader, 30' Holiday Rambler travel trailer, Luxor 30' travel trailer, (5) homemade trailers, aluminum extension ladder, sand blaster, drill press, 500 gal. fuel tank, 275 gal. oil tank, gasoline powered generator, interlocking scaffolding, truck bed trailer, mechanical tools, woodworking tools, garden tools, heavy duty socket sets, 3 mobile home axles, (4) 12"x22' I-beams, stainless steel plate steel, angle plate steel, assorted steel, gas propane bottle, electric hack-saw, chain hoist, electric grinder, wrecked cargo box, 2'x10' sheets of metal roofing, 3 rolls of wire fencing, electric hoists, folding bike, electric motors - single and 3-phase, firewood, 200 cubic yards of wood chips - 1 yr. old, lots of shop tools, a lifetime collection of tools and hardware.

**CONDITIONS BY: Mr. Ken Link**

**QUESTIONS: Please Call (717) 865-2924**

**FOOD STAND**

**AUCTION CONDUCTED BY:**

**NELSON L. EBERSOLE, AUCTIONEER, LICENSE# - AU-001307-L PHONE (717) 867-5221 FAX (717) 867-5606 ROY SHIRK, AUCTIONEER, LICENSE# - AU-003248-L (717) 867-1119**

**PUBLIC AUCTION CONSTRUCTION - TOOLS**

**48 LONGABERGER BASKETS & OTHER ITEMS MONDAY, OCTOBER 20, 2003 9:00 AM 383 VALLEY ROAD, ETTERS, PA - YORK CO.**

(Off Interstate 83 at Exit 35, go north or Rt. 177 to Rt. 262 East (Valley Rd) approx. 8/10 mile to auction on left. Watch for Signs.)

**Construction Equip.:** Caterpillar 955L (Serial #85J10649) track loader; Mauldin super pavers (serial #83-7-118); Mauldin articulated roller 3 to 5 ton (serial #40-8906-143A); Roscoe roller pac - 1 ton (#3844); Ingersoll Rand air compressor w/diesel engine; 9 ton Eager Beaver tractor - elec. brakes, 79 Chev C-65 dump; Concrete mixer w/elec. motor; Myers snow plow w/ights **Farm Tractor & Equip.:** Massey Ferguson 65 gas tractor, Allis Chalmers C tractor & culti., 9N Ford tractor; J.D. 2020 gas tractor; 6' 3 pt. rear blade; Int 56-2 row corn planter; Offset disc; Spring harrow; Potato plow; Sears & Wards riding mowers; 91 Ford Taurus SW (bas trans); Craftsman rototiller; Sears riding mower w/snow plow; D.B. 24" sickle bar mower

**Tools:** Craftsman table saw; Acetylene torch set; Lincoln elec. welder; Aluminum tool box for pick-up; Platform scales; Mountville & Codorus hog troughs; 1000 x 20 truck tires; Chain link fencing; Rebar steel; Chicken crates; 2 walk behind garden tractors & attach.; 2 Lawn Boy mowers; Jack hammers; Air compressor; Onan generator; Burlap feed bags; Rakes; Shovels; Sledge hammers; Lg. assortment of tools & wrenches; B & D 10" power mitre saw & reciprocal saw; Jig saw; Skill saw; Battery charger; 12 ton hy. press; Cook stove top; Copper tubing; Nails, Rope; Animal kennel; Coal bucket; Anderson windows; Hot air furnace; Rowing machine.

**Butcher Equip. & Household:** Scalding trough; Hog scrapers; Butcher knives; 3 butcher kettles; Copper kettle; Meat grinder & butcher supplies; Wooden bucket & brass bucket; Wooden crate; Roaster & canner; Silver service items; Cherry seeder; Pic rack; Cast fry pans; Oak teachers desk, Maple desk; 4 dr. file; Satellite dish/Direct TV; Wooden rocker, Dresser w/mirror; Coffee table; Cookie cutters; Picture frames; Baskets, Stoneware; Crocks & jugs; Lantern; Plank chairs; Blue jars & canning jars; Green & pink Depression; Carnival glass; Glass butter churn; Quilting frames; Quilts; Afghans; Old Frigidaire refrigerator.

**PRINTS**

1971 Saga of the Iron Horse PRR, 67-68-84 Bob's Indian Calendars, 69 & 70 Clair D. Worley Cal., 77-84 Old Car Calendars, 1900's picture pictorial newspaper & magazines; BUSINESS memorabilia

**1:00 PM 48 LONGABERGER BASKETS 1:00 PM call for list AUCTIONEER'S NOTE:** We will sell tools & shop equipment & construction 1st, followed by butcher equipment & household goods, & baskets at 1:00 PM.

**SELLER: BARBARA HAKE - 383 Valley Road, Etters, Pa ALL ANNOUNCEMENTS DAY OF AUCTION TAKE PRECEDENCE OVER PRINTED MATERIAL**

**Auction Conducted by: Rentzel's Auction Service Blaine N. Rentzel AU 761-L Dave Conley AU 3269-L Emigsville, Pa 717-764-6412 www.rentzelauctionservice.com**

