



# 3 DAY PUBLIC AUCTION

## 12 Acre Farmette, Antiques, Personal Property

### Thurs., October 9, Fri., October 10, Sat., October 11, 2003

To be held in the village of Richfield, Juniata County, PA  
**Real Estate to be sold on Saturday, October 11 at 12:00 Noon**

**Directions:** Located in the village of Richfield PA on route 35 between Selinsgrove and Mifflintown. From Harrisburg, take routes 11&15 north to route 104 north to route 35 west. From Williamsport, take route 15 south to route 35 west. From State College, take route 322/22 east to route 35 east.

Real Estate is located across the road from Monroe Township Elementary School on west side of village.

**Auction to be held at THE VILLAGE MERCHANTS in Richfield** because of limited parking.

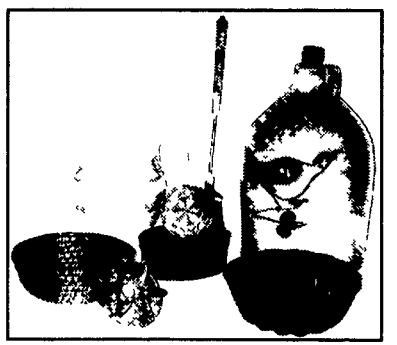
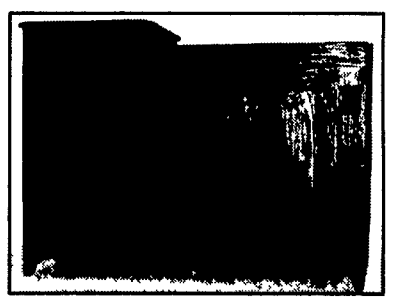
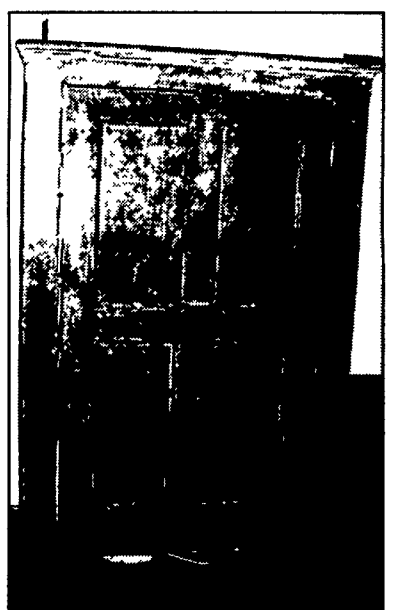
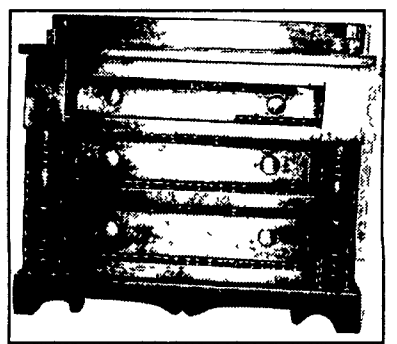
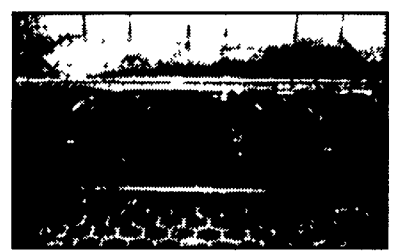
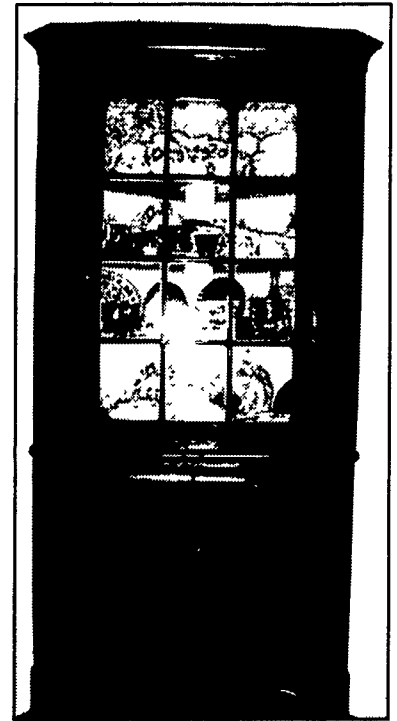
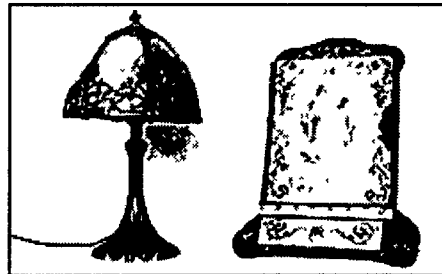
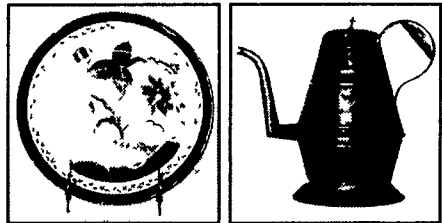
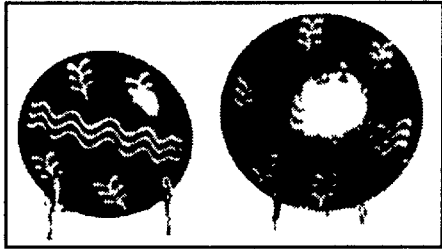
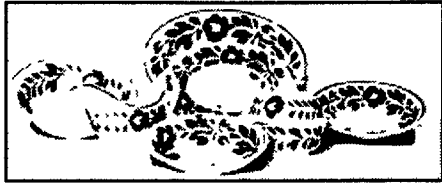
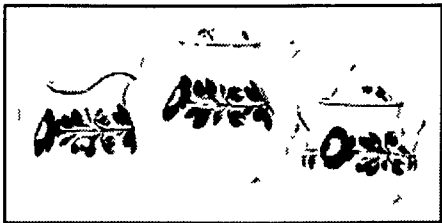
**Directions:** Turn at Bank, look for signs.

**Terms:** Call Auctioneer.

**Conditions by:** Herbert C. Lauver for estate of Casper Lauver

**Auctioneers:** Robert L. Leitzel - AU-002062-L      Tim Kline - AU002998-L  
 717-694-3287      570-837-0280

**This will be an old-fashioned country sale with good antiques and local items of interest to all.**



### THURSDAY OCTOBER 9 1:00 PM (partial listing)

#### Antiques, Tools (including Carpenter Tools, Butcher Tools, Blacksmith Tools & Collectible Kitchen Utensils), Misc. Furniture, Assorted China & Glassware.

J.L. Saylor Annville PA buggy, sleigh (needs repairs), 2 wooden spoke wheels, 2 grain cradles, wooden rakes, 2 wooden sewing horses, single & double trees, 2 & 3 pronged hay forks, 1 & 2 man saws, buck saw, horse collars, 4 wooden 1 hole corn shellers, wooden barrels, Oliver 1 horse plow, Quaker City ice cream freezer (pat 1895), 2 wooden tool chests, tool caddies, asst. ammo boxes, 2 wagon seats, wooden wheel barrow, John Deere pedal tractor (needs parts), 4 fly nets for horses, cast iron frog, cast iron dinner bell, old leg trap, **Butcher Tools** include Enterprise lard press, meat hooks, 2 & 3 prong meat forks, butcher ladles, hog scrapers, 22" & 26" copper kettles, 3 butcher kettles, early cast iron sausage stuffer, butcher benches, assorted beam scales, apple peelers, cherry seeders, wooden slaw cutters, metal egg box, Ball freezer jars, asst. canning jars, 20+ crocks, wooden handled augers, wooden planes, ice tongs, boring press, wooden pulleys, **blacksmith tools** include cone anvil, iron bender and wheel rim bender, **horse related items** include US Cavalry saddle bags & 2 early wheel horse saddles. **China & assorted glassware include 30 peanut butter glasses.**

John Deere LX 176 riding mower w/bagger, monsoon 2000 6HP pressure washer, small pull behind fruit sprayer & motor, Hotpoint refrigerator, GE side by side refrigerator, Amana air conditioner, Epic pro carpet cleaner.

### FRIDAY OCTOBER 10 9:00 AM (partial listing)

Assortment of clocks, wooden butter bowls, butter prints, wooden scoop, lemon press, smoothing board, stompers, rolling pins, early tin cookie cutters, tramp art pieces, wooden buckets & measures, crocks & jugs, old picture frames & prints including **Currier & Ives**, Wallace Nutting, etc. **Local Advertising**, including Richfield Bank items; rare thermometer/barometer, metal sign "Star Brand Shoes" from Gilbert & Kerstetter, Mt. Pleasant Mills, framed sign **Arbogast Meats**, Richfield, Swineford First National Bank tip try, advertising plates including P.A. Schnee, Mt. Pleasant Mills, 2 - 1909 calendar plates from Graybill & Garmen Richfield, Middleburg Bakery, 3 Gately & Fitzgerald supply Harrisburg, S.G Kerstetter, Meiserville, A.C Goodling, Evendale, C.G. Winey & Sons, East Salem, W.S. Brown, Cocolamus, pin cushion from N.G. Bingaman, Troxelville. **Local Postcards** advertising cards, holiday & picture postcards & photos, wild west cards, post card albums, **Celluloid photo album on stand w/mirror & drawer**, Delaval signs, **Old local historical books:** *Union Snyder County Atlas 1868*, *Tombstone Inscriptions of Snyder County*, (G.W. Wagonseller 1903), *History of the Susquehanna and Juniata Valley (1755-1855)*, *The Story of Snyder County*, (Dunkelberger), *Picturesque Journys in America, 1882*, *Snyder County Annals, (1919-1920)*, *UJ Jones History of the Early Settlement of the Juniata Valley*. Children's books. Tin ware, colanders, **blue swirl granite cream pail**, granite berry buckets, pie plates, assorted baskets, early kitchen utensils, 1915 porcelain tractor license, assortment of china & glassware. **Furniture:** Dome top trunks, farm tables, drop-leaf table, 2 desks w/slant tops, Empire style sofa, rope bed, sets of plank bottom chairs, parlor stands, high chair, wood box, teacher's desk from Richfield school, twig rocker & stand, 8 wire ice cream chairs from Meiserville General Store.

### SATURDAY OCTOBER 11 9:00 AM (partial listing)

**2 piece 12 pane corner cupboard w/2 drawers over 2 paneled doors on bottom**, 1 piece grain painted corner cupboard w/4 paneled doors, **early dovetailed cupboard with single door, original red paint**, 2 sets of 6 decorated plank bottom chairs, **sponge decorated blanket chest** with turned legs, blanket chest, 3 dry sinks, rope bed, plank bottom rockers, wool walking wheel, spinning wheel, **miniature 3 drawer walnut dresser**, dovetailed cradle, dough tray, flour chest, pie cupboard with tin panels, **child's dry sink dated 1878**, Hoosier cabinet with flour bin, wood boxes, red canning cupboard, 3 piece Eastlake bedroom set, spool cabinet, night stands, library tables, empire chest of drawers, brass bed, iron bed, child's rocker, secretary desk with bookcase top, pressed back high chair, oak sideboard, oak china closet, round oak table, oak wardrobe, 2-3 **piece oak bedroom suites.**

**Cowden & Wilcox blue decorated batter with original tin lids**, 2 gallon jug with bird decoration, 2 blue decorated Cowden & Wilcox jugs, 2 decorated J.H. Dipple jugs, 4 gallon decorated crock, 3 gallon jug with bird, other blue decorated crocks etc. **Over 50 pieces of late Adams Rose China: coffee pot, pitchers, sugar & other bowls, platters, plates, cups & saucers**, 2 flow blue cups & saucers, 8" & 9" slip decorated red-ware plates, **Gaudy Dutch plate, Blue Spatter plate with star**, 2 mocha bowls, copper lustre shaving mug, pitchers, early Adams Rose plate, **Bennington molds**, wash basin, bedpan, spittoon, bowls & pie plates, green sponge ware bowl, yellow ware bowl, soft paste bowl: "Headwaters of the Juniata," children's ABC plates, wash bowl set, **9" ruby glass pitcher marked RICHFIELD**, tin coffee pot with jointed spout, Diamond Dyes cabinet (from Deckers Drug Store Richfield), 2 painted candle boxes, candle mold, rye baskets, oval finger box, forged iron turner with decoration, 2 wooden wall boxes, **Noma #145 Dresden fancy figure lamp set in original box**, die cut cardboard "Merry Christmas," high-low wheeled child's wagon, Enterprise #2 cast iron coffee grinder (converted to lamp), lamp with slag glass shade, **Coverlet marked William Schnee, Freeburg PA 1842**, 14 old quilts: sampler, double wedding ring, basket, appliqued, etc.

1977 Richfield Dutch days quilt, scenes from Richfield.