

Windy-Knoll-View Cow Rises To Top At Eastern National Holstein Show

(Continued from Page A32)

In the youth division, Ryan Savage of Knoxville, Md., showed both the grand champion cow and also swept the youth intermediate show.

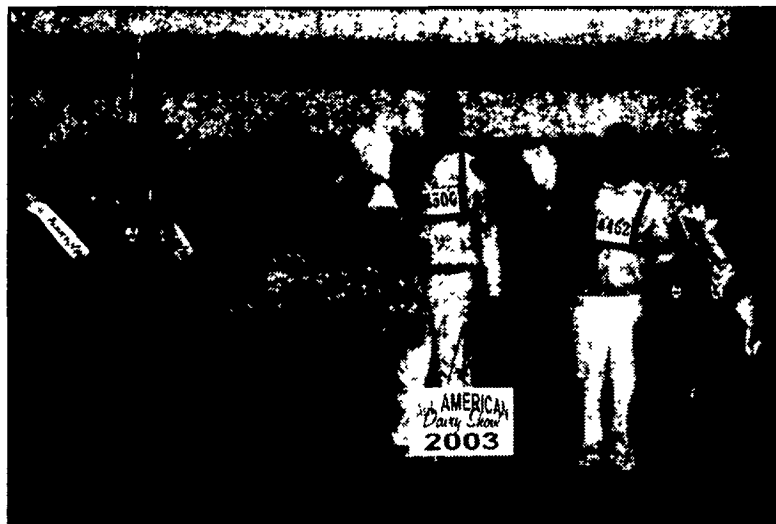
Lylehaven Lindy Dalila-ET, Savage's 5-year-old cow, was grand champion and went on to be named youth supreme champion of seven breeds at the All-American.

Scott Walton of Carlisle showed the reserve grand champion, Tower Vue Lee Ruthie, a 4-year-old cow who was also selected as best bred and owned in the youth show.

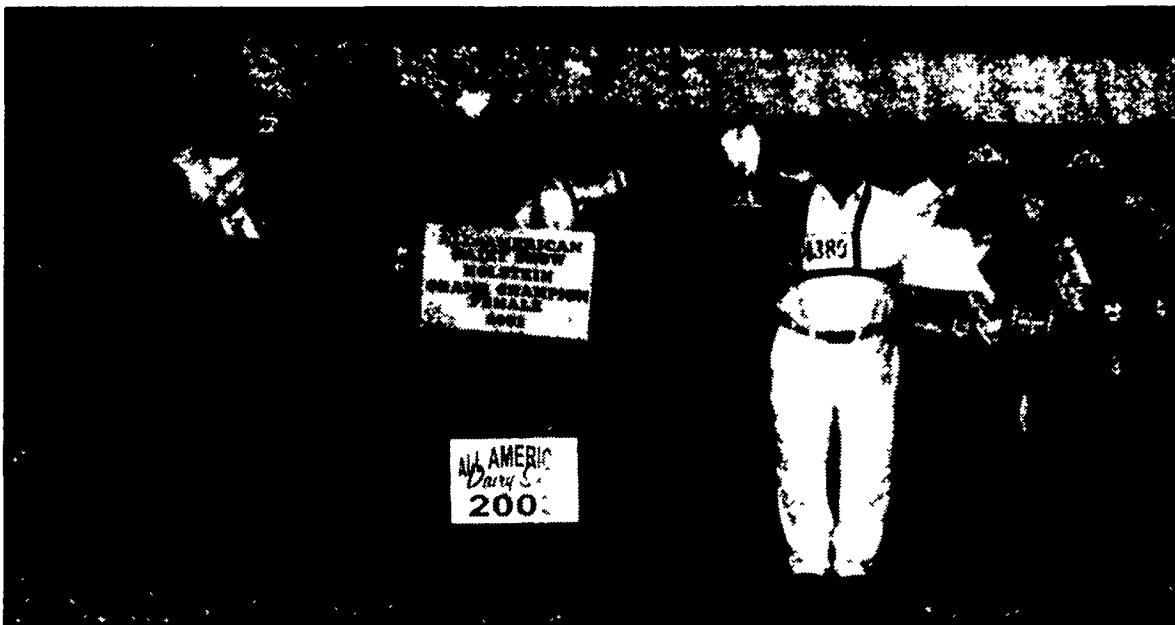
Savage-Leigh Star Gazer, a junior 2-year-old, was Savage's champion entry in the intermediate youth show, followed by his junior 3-year-old reserve intermediate champion, Savage-Leigh Astro Hazette.

Scott and Brian Landis of Creeknook Holsteins, Goshen, Ind. exhibited the youth junior champion, Earlen Terrason Steph, a summer yearling heifer.

Reserve champion in the youth junior show went to Turnpike View Redmarker Joy, shown by Dustin Horning, Turnpike View Holsteins, Stevens.



Youth Holstein winners are Ryan Savage, at halter on left, grand champion, and Scott Walton, reserve. Joining them are Pennsylvania dairy royalty and Doug Fiely presenting check.



Lining up with Eastern National Holstein Show winners are, from left, Kirk Sattazahn, presenting check; Justin Burdette; Carla Martin, Pennsylvania Dairy Princess; Kyle, James, and Nina Burdette, with grand champion; Charlie McEvoy with reserve; judge Michael Deaver; and Pam Werley and Emily Grove, Pennsylvania alternate dairy princesses. Photo by Dave Lefever



Youth junior champions lineup, from left, are Emily Grove, Pennsylvania Alternate Dairy Princess; Carla Martin, Pennsylvania Dairy Princess; Scott Landis, junior champion; Dustin Horning, reserve; Michael Deaver, judge; and Pam Werley, Pennsylvania Alternate Dairy Princess.
Photo by Charlene Shupp



With open junior champions are, from left, Carla Martin; Sandy McCauley and Crystal Dell with reserve champion (for Jerome Rappaport); Mike Strowd and Randy Finke with champion; Michael Deaver, judge; Emily Grove; and Pam Werley.

Lancaster Farming

Check out our Website!

www.lancasterfarming.com



Highland Tank

TOUGHTANK BASEMENT OIL STORAGE TANKS

Capacity	Gauge	Approx. Weight	Dimensions	Type	Price
275	12	279	27"x44 1/4"x62"	Ver.	\$195.00
275	12	279	27"x44 1/4"x62"	Hor.	\$197.00
330	12	320	27"x44 1/4"x74"	Ver.	\$263.50
330	12	320	27"x44 1/4"x74"	Hor.	\$265.50

“LIGHT DUTY” SKID TANKS

Capacity	Gauge	Diameter	Length	Approx. Weight	Price
240	12	3'2"	4'0"	345	\$332.00
300	12	3'2"	5'0"	355	\$344.50
500	12	4'0"	5'5"	530	\$479.50
500	10	4'0"	5'5"	648	\$528.50
500	7	4'0"	5'5"	826	\$586.50
1,000	10	4'0"	10'9"	1183	\$893.00
1,000	7	4'0"	10'9"	1499	\$971.00

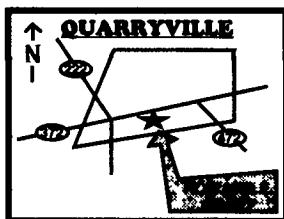
ALSO AVAILABLE:

- **Double Wall “Light Duty” Skid Tanks**
- **Double Wall Fireguard™ Tanks**
- **Bench Top Lube Tanks**
- **GasboyHand and Electric Pumps**
- **Petro-Hoppers • Dike Tanks**

HOWARD E. GROFF CO.

Fuel Oil, and Gasoline
111 E. State Street, Quarryville, PA 17566

**Phone: 717-786-2166 or
800-717-2166**



**An Additional
1% DISCOUNT is
offered If paid by
Cash Money or Certified Check**

Mon.-Fri.
8 AM - 4 PM
Sat.
8 AM - Noon

Paying More At The Pump

LEESPORT (Berks Co.) — As gasoline prices rise, many consumers are looking for ways to improve fuel efficiency and save some money at the pump. There are many ways you can save money at the pump.

- Buy the correct octane level
- Do not speed
- Use cruise control

- Avoid unnecessary idling
- Remove excess weight from trunk
- Streamline your errands
- Keep your engine tuned
- Change your oil
- Keep tires properly inflated and aligned
- Purchase a fuel efficient car

SUEVIA *Waterbowls*

**Made in
Germany
Since 1923**

5 GALLONS BY MINUTE

Connection from ABOVE AND BELOW

Mod. 1200



REF. 100.1200 (Cattle)

- Large bowl in **stainless steel**
- Resistant and breakproof, equipped with anti-splash
- Free running tube valve at high or low water pressure
- Flow: more than 5 gal/min.
- 1/2" NPT connection from above and below
- Stay clean bowl design

Distributed by:

ROVENDALE'AG & BARN INC.
1300-Susquehanna trail
Watson town, PA 17777
Phone: 570-538-9564 or 742-4226
Fax: 570-538-5017

We honor: Farm Plan
 We Ship UPS