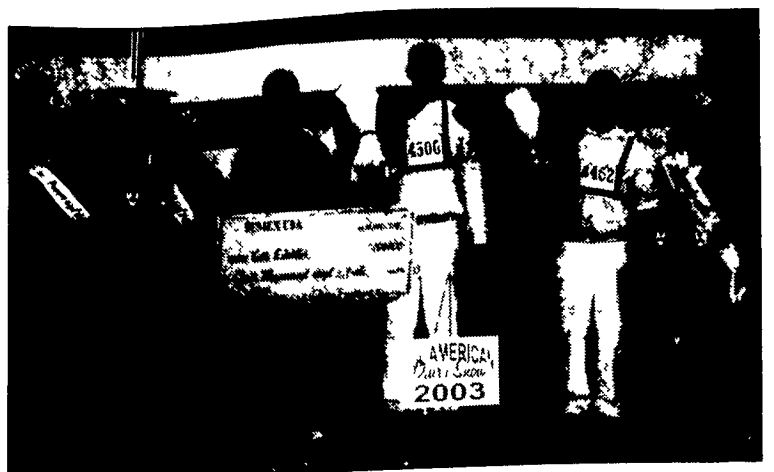


Lining up with Eastern National Holstein Show winners are, from left, Kirk Sattazahn, presenting check; Justin Burdette; Carla Martin, Pennsylvania Dairy Princess; Kyle, James, and Nina Burdette, with grand champion; Charlie McEvoy with reserve; judge Michael Deaver; and Pam Werley and Emily Grove, Pennsylvania alternate dairy princesses. Photo by Dave Lefever



Youth Holstein winners are Ryan Savage, at halter on left, grand champion, and Scott Walton, reserve. Joining them are Pennsylvania dairy royalty and Doug Fiely presenting check.

## Windy-Knoll-View Cow Rises To Top At Eastern National Holstein Show

**DAVE LEFEVER**  
Lancaster Farming Staff

**HARRISBURG** (Dauphin Co.) — Windy-Knoll-View Promis-ET, a cow bred, owned, and exhibited by James and Nina Burdette, Mercersburg, was selected as grand champion of the Eastern National Holstein Show on the final day of the All-American Dairy Show in Harrisburg last week.

It was a banner week for the Burdettes and this champion cow family. A pair of Promis's spring yearling daughters, Windy-Knoll-View Parade and Windy-Knoll-View Pledge, placed first and second in their class, respectively. These full sisters were sired by Comestar Outside-ET.

Earlier in the week, Parade and Pledge were picked as junior champion and reserve junior champion, respectively, in the Pennsylvania Holstein Championship Show.

Promis, a 5-year-old, was also best bred and owned animal in the show. She was sired by Startmore Rudolph-ET and her dam is Windy-Knoll-View Ultimate Pala. Beside being a superb type cow, Promis tallied a 305-day lactation record of 37,351 pounds of milk, 1,378 pounds of fat, and 1,176

pounds of protein.

George Malkemus and Anthony Yurgaitis of Arethusa Farm, Litchfield, Conn., showed the reserve grand champion cow, senior-2-year-old, Santschi Leduc Victoria.

Victoria was the intermediate champion of the show, followed by T-Farm Durham Premium, a senior-3-year-old exhibited by Randy and Tara Taylor of Bouckville, N.Y.

Faith and Olivia Strowd and Elizabeth Finke of Oakvale

Farm, London, Ohio, exhibited the junior champion, Bar-Lee Oakvale Autumn, a fall yearling.

Jerome Rappaport of Lylehaven Farm, East Montpelier, Vt. showed the reserve junior champion, Lylehaven Durham Poppy, a winter calf.

Rappaport was named premier breeder and exhibitor.

(Turn to Page A33)

*Old Barn? New Barn? Remodeled Barn?*  
**No Problem!**  
**The Comfort Zone Tie Stall**



- ✓ Specially designed to maximize cow comfort
- ✓ Available in stainless steel and galvanized steel
- ✓ Superior craftsmanship and quality materials

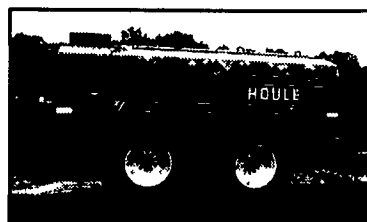
The Comfort Zone Tie Stall eliminates barriers to cow comfort.

**Improve your barn's cow comfort! Call Today!**

**Petersheim's Cow Mattresses**  
117 Christiana, Pike, Christiana, PA 17509  
**610-593-2242**  
Serving PA, MD, NJ, NY, and DE for 10 years!

## LIQUID WASTE EQUIPMENT SPECIALISTS

New For Sale From **HOULE**

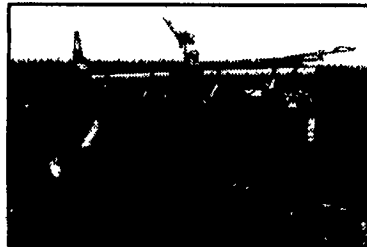


**Houle 3600**  
w/23.1x26 Tires, Lights, Brakes, Call For Pricing

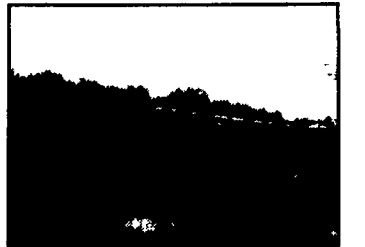


**Houle 28" Maxi-Pump,**  
w/Hydraulic Primer, Call For Pricing

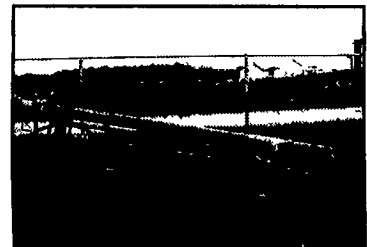
- USED EQUIPMENT -



**14' Super Pump,**  
Very Good Condition, Twin Nozzles • \$1,400



**42', 8" Lagoon Pump,**  
Rental Unit, Call



**Houle 8', 4" High Pressure Pump,**  
w/25 HP Motor • \$3,500



**Houle Manure Irrigation Pump,**  
CALL



**2000 Houle 42' Multi-Purpose Lagoon Agi-Pump • \$7,500**



**Houle 32' Lagoon Agi-Pump, Rental Unit, \$7,500**

Feed Equipment from

**VALMETAL**



**BALE MASTER**  
Stationary Bale Chopper, Chops round or square, small or large bales for TMR Mixers



**AGRI-CHOPPER**  
Round Bale Chopper

Hammermill • T.M.R. Auger Mixers • Batch Mixer

MID-ATLANTIC  
**agri systems**

800-222-2948 • 717-529-2782  
4019 Ashville Rd. • Quarryville, PA 17566  
www.midatlanticagri.com

**Incredible Prices !!!**

**UP TO 60% OFF**

**SUPER HEAVY STEEL**

- Equipment Storage!
- Workshops!

**FAST AND SIMPLE TO ERECT!! NO CRANE NEEDED!!**



AVAILABLE MODELS

30 x 50 (2 LEFT)	40 x 64 (3 LEFT)
45 x 80 (2 LEFT)	52 x 100 (1 LEFT)
55 x 120 (2 LEFT)	

**800/825-5059**

EXCELLENT FOR HAY AND GRAIN STORAGE

AMERICAN STEEL SPAN