

# Waverly Farm Cows Make A Sweep In Mid-Atlantic Jersey Show

**DAVE LEFEVER**

*Lancaster Farming Staff*

**HARRISBURG** (Dauphin Co.) — Hermitage Counciller Sheba, a young Jersey cow exhibited by Waverly Farm, was called the best of the best at the All-American Dairy Show last week.

The junior-3-year-old Mid-Atlantic Regional Jersey Show champion came out on top of seven breed winners to be named supreme cow during the All-American grand finale Thursday, Sept. 25.

Sheba is owned and exhibited by Ken, Mike, and Paul Stiles of Waverly Farm, Clearbrook, Va.

Waverly Farm also showed Giprat Renn Anastasia-ET, the aged cow who was the senior champion and reserve grand champion in the Mid-Atlantic Regional Jersey Show, as well as Glenholme Jesters Madeline, reserve intermediate champion (behind Sheba), and the reserve jun-

ior champion heifer.

Charles and Susan Luchsinger of Silver Spring Farm, Syracuse, N.Y. exhibited Peninsula Jade Leanne, the reserve senior champion.

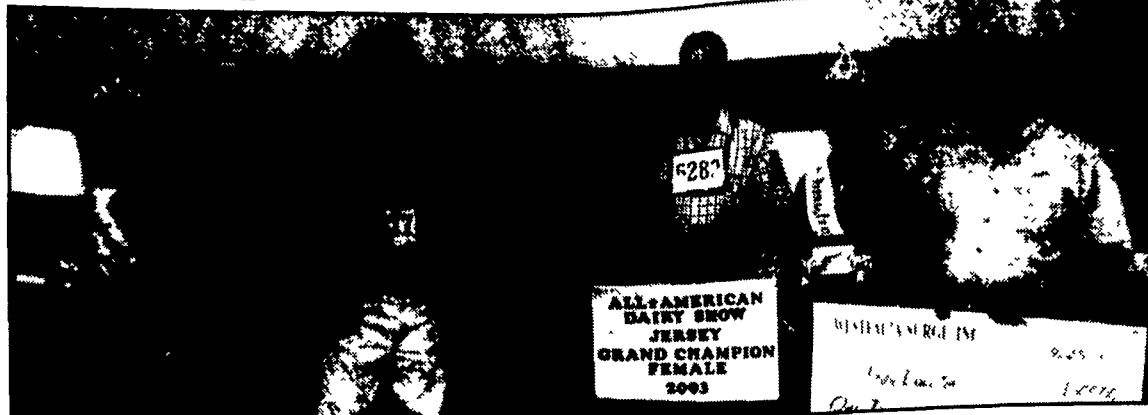
Michael, Leah, and Chris Birch of White Hall, Md. showed the junior champion heifer, a spring yearling named Harbor Creste TG Patty Cake.

In the youth division, Scott Walton showed the grand champion Jersey, Tower-Vue Terror, a senior 2-year-old who was also best bred and owned of the youth show.

Heather Pease of Susquehanna exhibited the Jersey youth reserve champion, Sweet-Peas Ren Dash-ET.

Pease also showed the youth senior champion and youth reserve senior champion, Sweet-Peas Ren Delight and Sweet-Peas DC Magic, respectively.

Scott Fisher of New Enterprise



Hermitage Counciller Sheba, cow on right, is the Mid-Atlantic Jersey Show grand champion. She went on to be named supreme champion at the All-American. Joining the lineup here are, from left, Pam Werley, Pennsylvania Alternate Dairy Princess; Paul Stiles of Waverly Farm with the reserve champion; Chris Hill with Sheba, for Waverly Farm; Carla Martin, Pennsylvania Dairy Princess; and John Parks, presenting check.

exhibited the youth junior champion, followed by Thomas Mason of Chestertown, Md. with the youth junior reserve champion heifer.

During the show, Pennsylvania Secretary of Agriculture Dennis

Wolff joined All-American leaders in honoring the family of the late John Stiles, Spring Valley Farm, Westminster, Md.

Wayne and Allen Stiles, sons of John, accepted a painted milk can in recognition of the family

having exhibited at the All-American since it began in 1964.

Brian Garrison of Tiffin, Ohio, judged the Jersey show and joined judges Curtis Day and Michael Deaver in selecting the supreme champion cow.



Exhibiting junior champions in the open show are Mike and Leah Birch, with champion heifer on right, and Wayne Stiles (for Mike Heath) reserve. Joining them are Pennsylvania dairy royalty.



Allen and Wayne Stiles, Spring Valley Farm, Westminster, Md., receive a handpainted milk can in honor of 40 years of family showmanship at the All-American. From left are Emily Grove, Pennsylvania Alternate Dairy Princess; Allen Stiles; Obie Snider, All-American board of directors president; Dennis Wolff, Pennsylvania secretary of agriculture; Wayne Stiles; Carla Martin, Pennsylvania Dairy Princess; Pam Werley, Pennsylvania Alternate Dairy Princess; and Charlie Itle, show manager.

## ERSKINE

### Snow Blowers for Skid-Steer Loaders



Model #1812

Hydraulic Driven  
Model #1812

- The Model 1812 is designed for hydraulic systems that have 11-20 gallons per minute pump capacity.
- Hydraulically driven, heavy duty gear box and chain drive.
- The Model 1812 meets the tough demands of your skid-steer loader while remaining a very economically priced hydraulic blower.

## SNO-WAY

### PREDATOR SKID STEER STRAIGHT PLOWS



### PREDATOR PLOWS SKID STEER FEATURES

- ✓ High Strength Steels
- ✓ Easy Roll Maximum Curve Blades
- ✓ Interchangeable Steel or Lexan Polycarbonate Blade Face
- ✓ Flex Force Frames For Durability
- ✓ Universal Skid Steer Mount

**Predator 25SKD**

- Fits up to 110 HP
- 25" Tall

- 69" "Sidewalk Plow"
- 80", 90", 96", 108"

Sizes  
Available

**717-354-4191 (800) 346-8319**

**110 South Railroad Ave., New Holland, PA 17357**

**Monday Thru Friday 7:30-5:00; Saturday 7:30-Noon**

Visit our Web Site: [www.abcgroff.com](http://www.abcgroff.com)



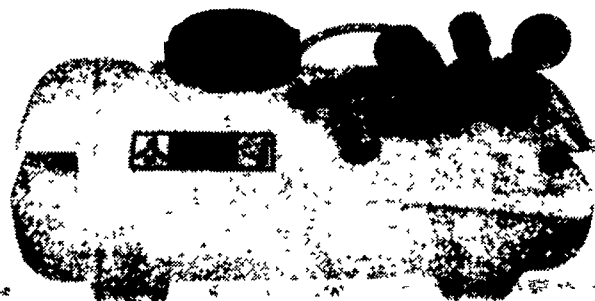
## Paul B. Zimmerman INC.

### YOUR COMPLETE

### HEADQUARTERS FOR SPRAYERS & PUMPS

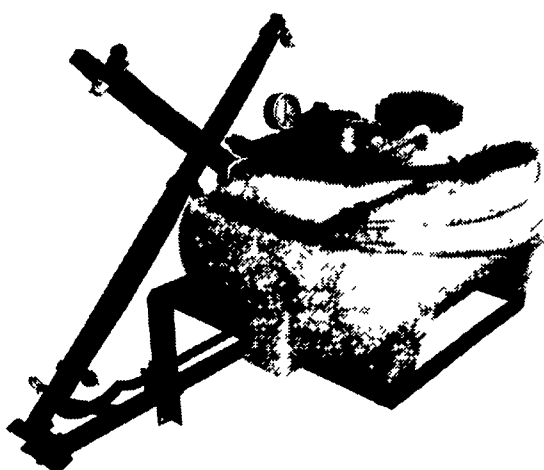
## Liquid Applicators

This applicator is designed to be used on balers and harvesters for applying liquid inoculates and acids. It is mounted on the baler or harvester and a hose is connected to one or two spray nozzles. A Shurflo 12 volt diaphragm pump provides the power for spraying. A selection of spray tips and a calibration chart gives various options for a wide range of application rates. More tips are available if the ones included cannot be adapted. The kit includes all the hardware necessary for installing the applicator in most applications. The 25 gallon unit is also available with a remote pressure control.



### Specifications

- 1.4 GPM, 12 volt Shurflo pump, 60 PSI max.
- Incline filter
- Pressure regulator
- Glycerin filled pressure gauge
- 15 or 25 gallon tank
- 18' wiring harness with switch and fuse
- 15' hose, 2 nozzle bodies, 4 tips sizes and hose clamps included.



### Features:

- 25 gallon tank
- 3.0 GPM Shurflo diaphragm pump
- Pressure regulator
- Liquid filled pressure gauge
- In-line filter
- 12' boom with breakaway
- Adjustable boom height
- Non-drip TeeJet nozzle bodies on 20" centers
- XR ceramic flat fan tips
- 17' hose with spray wand
- 8' wiring harness with switch & fuse

## ATV Mounted Sprayer 25 Gallon Tank

This durable ATV sprayer attaches easily to most all terrain vehicles with a rear mounted rack. It provides a 12' (160" coverage) boom and a handgun for spot spraying.



### Added Value With Our 2 Coat Process!

1. Five step metal preparation including iron phosphate conversion coating to enhance adhesion & prevent undercoat corrosion
2. Zinc rich epoxy powder undercoat
3. TGIC polyester powder top coat baked at 400° to fuse coats forming a cross link molecular bond

## PAUL B. ZIMMERMAN, INC.

50 Woodcorner Rd., Lititz, PA 17543

1 Mile West of Ephrata

(717)738-7350



• HARDWARE • FARM SUPPLIES • CUSTOM MANUFACTURING • CRANE SERVICE

### HOURS

Mon, Thurs, Fri 7-8 30  
Tues, Wed 7-5 30  
Sat 7-4 00